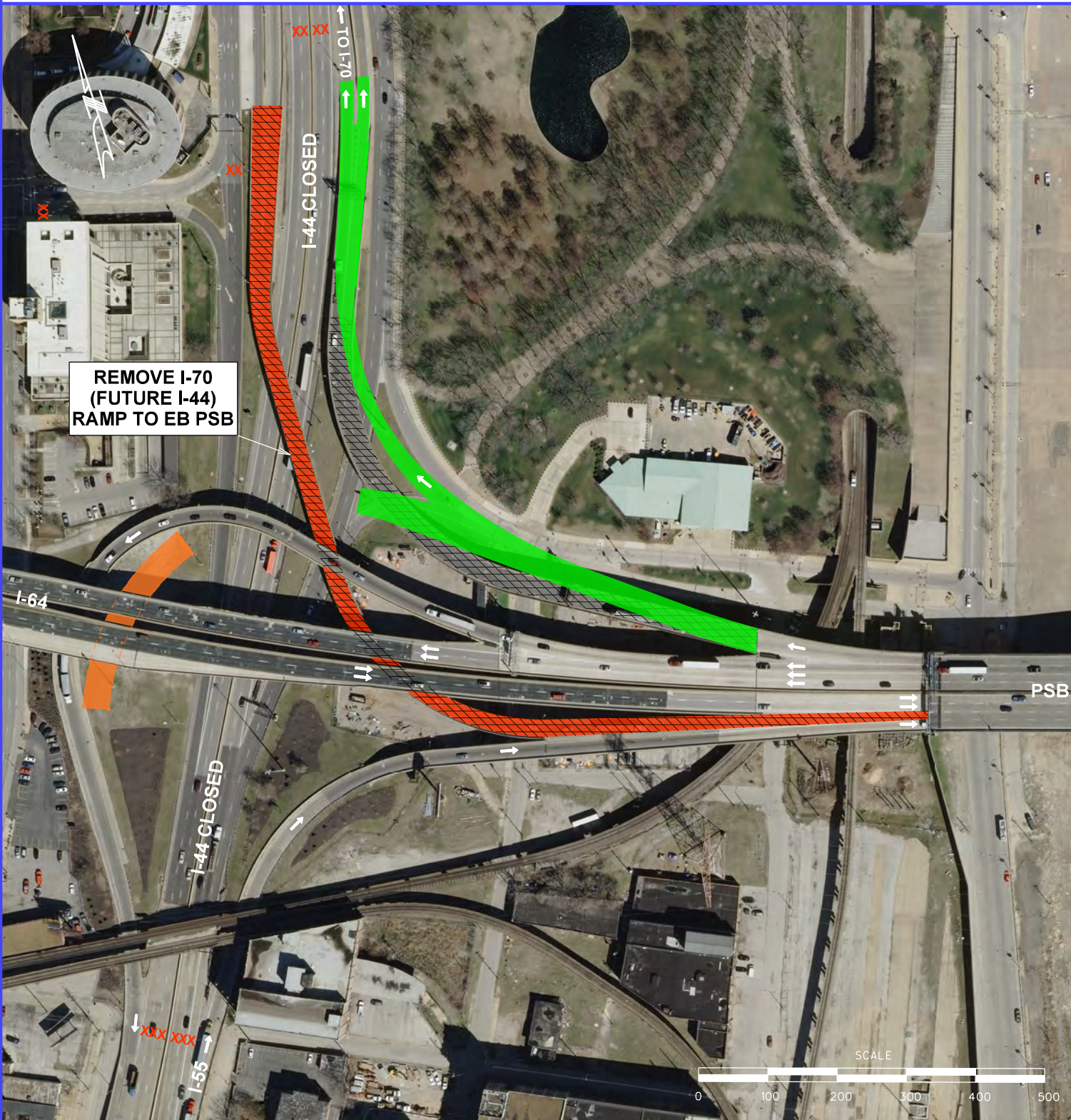
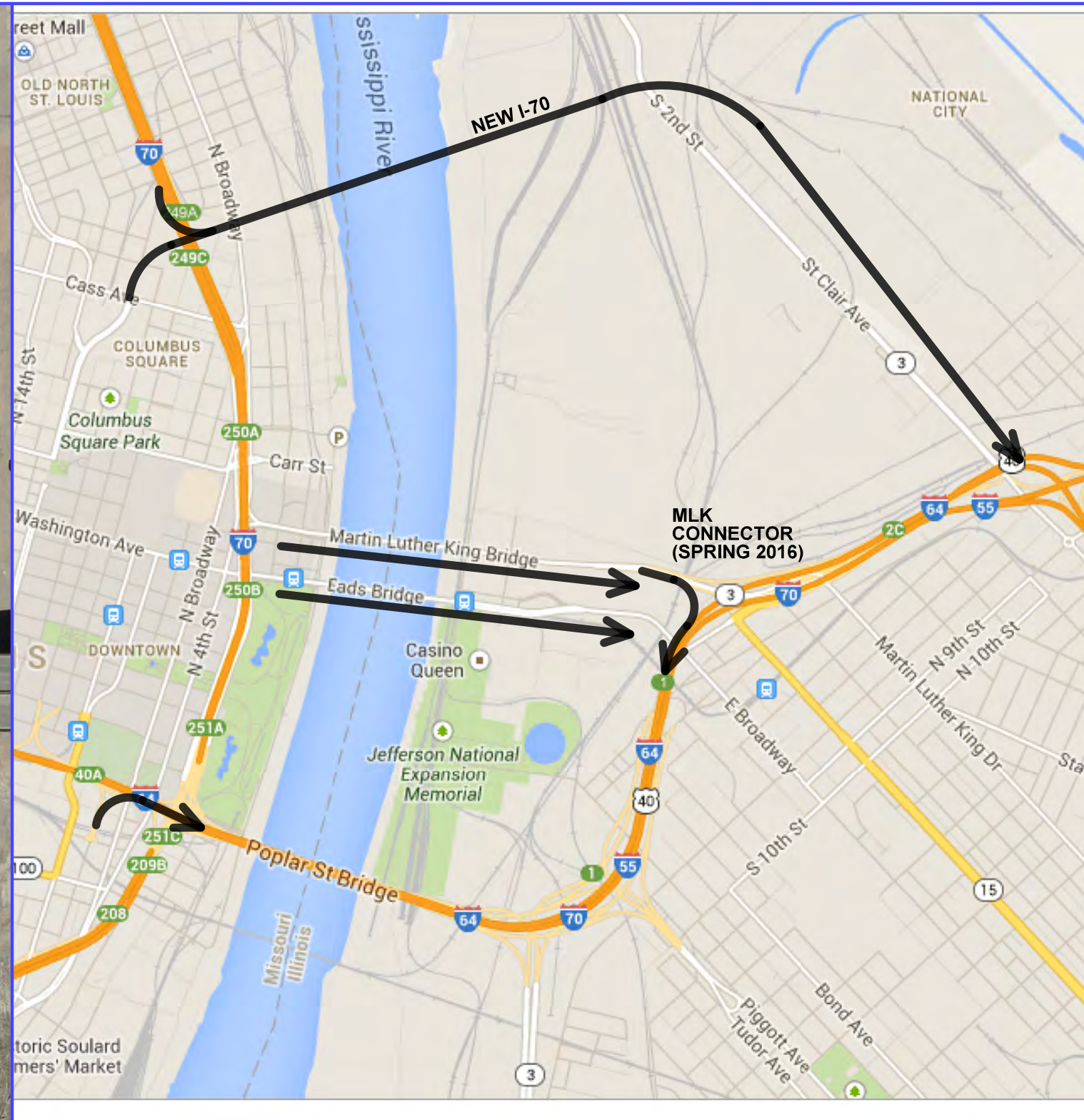


POPLAR ST BRIDGE INTERCHANGE RECONSTRUCTION

PHASE 2A: MARCH 2015 REMOVE SOUTHBOUND TO EASTBOUND RAMP



STAGING PLAN



ROUTES AFTER RAMP REMOVAL

- EXISTING RAMP REMOVAL
- NEW RAMP CONSTRUCTION
- NEW RAMP OPEN