



Route 67 Improvements

Public Meeting

Aug. 1, 2 & 4, 2005

What's the problem?

Route 67 is a hilly, old two-lane road with a lot of large truck, agriculture equipment and recreational vehicle traffic.

What's the solution?

This improvement was made possible through the partnership of the Route 67 Corporation, MoDOT and the U.S. Army Corps of Engineers. Funding was secured for the improvements after Poplar Bluff voters passed a tax during the April election to pay for a portion of the construction and Missouri voters passed Amendment 3 last November. The expressway project includes constructing two additional lanes with paved shoulders as well as median crossovers to provide access along the route.

Where does it stand now?

Surveying and soil testing are underway. Preliminary roadway plans are being designed currently.

What happens next?

Public meetings will take place next year as more detailed designs are completed for the individual projects.

What's the estimated cost?

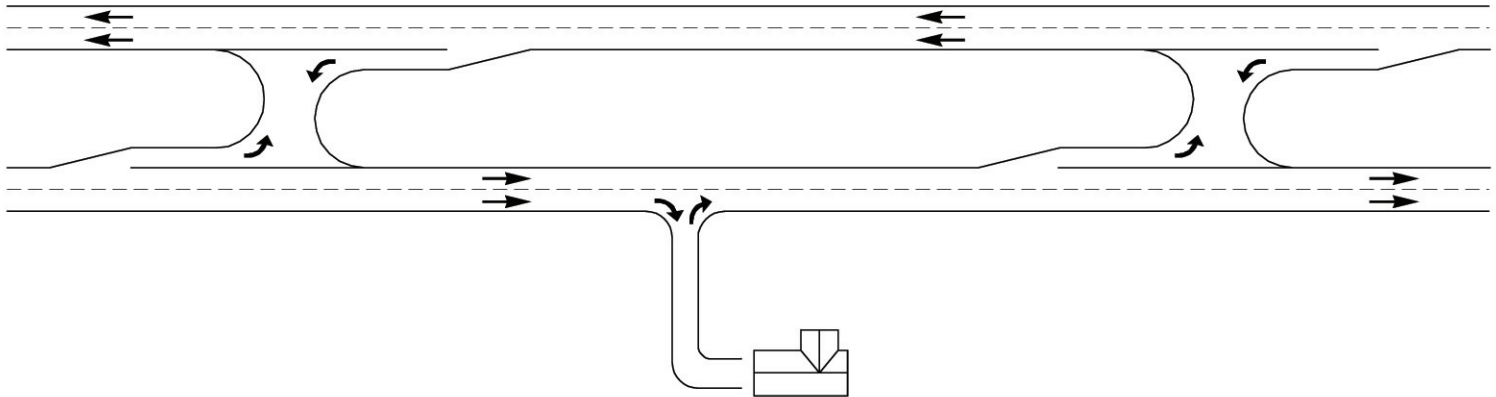
\$180 million (MoDOT: \$92 million, Route 67 Corporation: \$60 million, U.S. Army Corps of Engineers: \$28 million)

Who Do I contact for more information?

- **Section from Cherokee Pass to Route 34 in Wayne County:**
Project Manager Tim Richmond, (573) 472-5290
- **Section from Route 34 in Wayne County to two miles south of Route O in Butler County:**
Project Manager Andy Meyer, (573) 472-5296
- **Section from two miles south of Route O in Butler County to the existing four-lane near Poplar Bluff:**
Planning Manager Bill Robison, (573) 472-6621

Let us know what you think, visit www.modot.org/southeast

Access To Property



Only right turns into properties and right turns out of properties will be allowed.

The \$180 Million Plan

VS.

This is the expressway plan that will be constructed.

- Two new lanes with paved shoulders
- Median crossovers
- No interchanges
- No outer roads



The \$425 Million Plan

This is the ultimate plan for freeway status for Route 67 as discussed during the location study.

- Several interchanges
- Extensive outer road system

