

2009 Missouri State
Highway System

Traffic
Crash
Statistics

Missouri State Highway System
Traffic Crash Statistics
Table of Contents

	<u>Subject</u>	<u>Page</u>
Chapter 1:	Introduction: Statewide Traffic Crash Statistics	3
	A. Crashes by Type	4
	B. Crashes by Contributing Circumstances	11
	C. Crashes by Populations Grouping	15
	D. Crashes by Route Marking	19
	E. Crashes by Class	23
	F. Crashes by Driver's Age	25
	G. Crashes by Hour, Day and Month	30
	H. Crashes by Weather Condition	40
	I. Crashes by Vehicle Type	44
	J. Crashes by Light Condition	50
	K. Crashes by Fixed Object Struck	54
	L. Crashes by Intersection Type	58
	M. Crashes by Involving Pedestrians	62
	N. Crashes by Investigator	71

Chapter 1

2009 STATEWIDE TRAFFIC CRASH STATISTICS

The following summary of traffic crashes represents only those crashes that have occurred on the State Highway System of Missouri in 2009. The information contained in this publication is a summary of the crash reports provided to the Missouri Department of Transportation. This publication is possible only through the conscientious reporting efforts of Missouri Law Enforcement Agencies.

These statistics are compiled pursuant to federal law, 23 USC Section 152.

Chapter 1-A : CRASHES BY TYPE

This section divides total 2009 crashes by the type of impact severity. It further distinguishes the types by indicating whether they occurred “ON” or “OFF” the roadway.



**Missouri Department of Transportation
Transportation Planning
Crashes by Type for 2009**

Date: Aug 3, 2010
Time: 4:51:58 PM

Crash Type	Fatal Crashes	Total Fatalities	Injury Crashes	Total Injuries	PDO Crashes	Total Crashes
ACCIDENT TYPE OFF ROAD						
RAN OFF ROAD	4	5	78	142	208	290
RAN OFF ROAD-ANIMAL OTHER THAN DEER	0	0	0	0	5	5
RAN OFF ROAD-BICYCLIST OR PEDALCYCLIST	0	0	6	6	2	8
RAN OFF ROAD-DEER	0	0	0	0	13	13
RAN OFF ROAD-FIXED OBJECT	209	226	5,648	7,264	10,950	16,807
RAN OFF ROAD-MOTOR VEHICLE IN TRAFFIC	0	0	0	0	0	0
RAN OFF ROAD-OTHER OBJECT	0	0	23	29	50	73
RAN OFF ROAD-OTHER/NONCOLLISION	0	0	50	63	186	236
RAN OFF ROAD-OVERTURNED ON ROADWAY	0	0	0	0	0	0
RAN OFF ROAD-OVERTURNING	36	39	921	1,222	671	1,628
RAN OFF ROAD-PARKED MOTOR VEHICLE	3	3	85	121	360	448
RAN OFF ROAD-PEDESTRIAN	4	4	17	20	2	23
RAN OFF ROAD-RAILROAD TRAIN	0	0	0	0	0	0
Subtotal	256	277	6,828	8,867	12,447	19,531
ACCIDENT TYPE ON ROAD						
ANIMAL OTHER THAN DEER	0	0	86	103	618	704
BICYCLIST OR PEDALCYCLIST	1	1	94	98	16	111
CHAIN REACTION REAR END	11	11	1,652	2,966	2,439	4,102
DEER	4	4	251	284	2,811	3,066
FIXED OBJECT	4	4	98	134	324	426
MOTOR VEHICLE IN TRAFFIC	226	273	10,304	16,350	34,372	44,902
OTHER NON - COLLISION	6	6	101	125	454	561
OTHER OBJECT	3	5	56	81	702	761
OVERTURNED ON ROADWAY	22	24	483	640	193	698
OVERTURNING	0	0	0	0	0	0
PARKED MOTOR VEHICLE	1	1	8	13	34	43
PEDESTRIAN	37	37	186	199	15	238
RAILROAD TRAIN	2	3	1	2	4	7
RAN OFF ROAD-MOTOR VEHICLE ON OTHER ROAD	4	6	30	60	80	114
Subtotal	321	375	13,350	21,055	42,062	55,733

This report contains information that is protected from disclosure by federal law, 23 USC Section 409 and the Missouri Open records Law (Sunshine Act), Section 610.021 RSMo. Please review MoDOT's policy and procedure manual on the Sunshine Act before releasing any of the information contained herein.



Missouri Department of Transportation
Transportation Planning
Crashes by Type for 2009

Date: Aug 3, 2010
Time: 4:51:58 PM

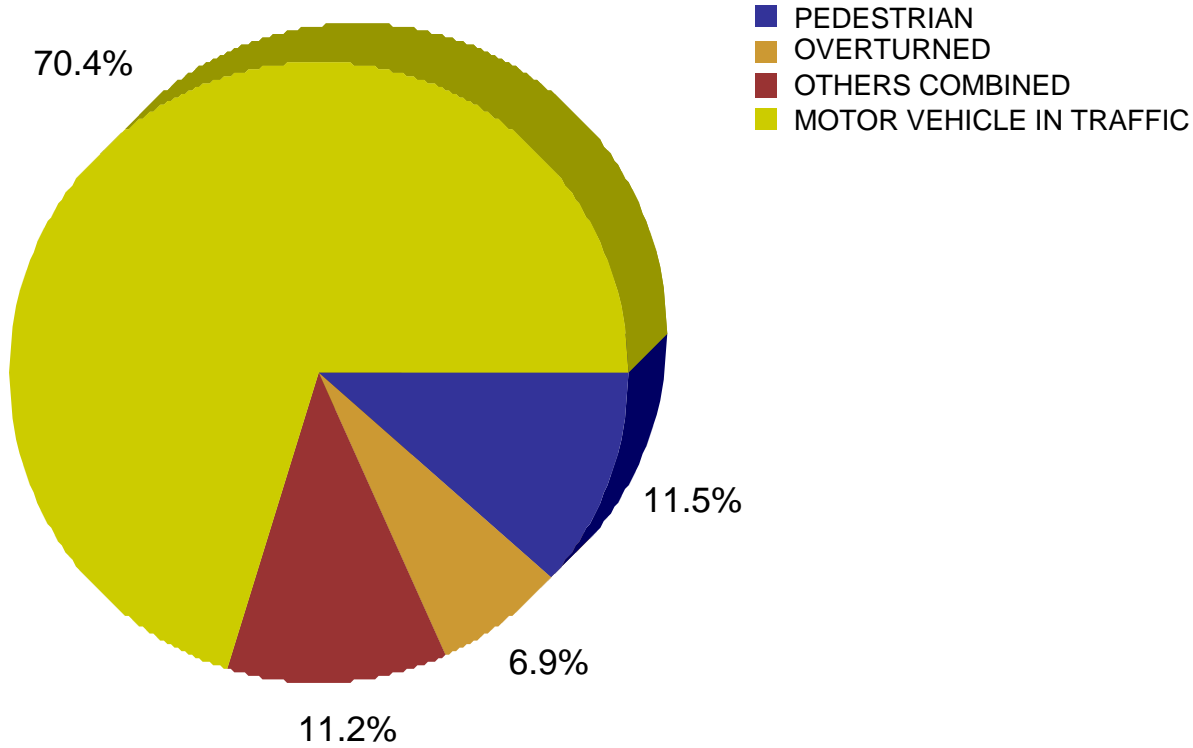
Crash Type	Fatal Crashes	Total Fatalities	Injury Crashes	Total Injuries	PDO Crashes	Total Crashes
Totals	577	652	20,178	29,922	54,509	75,264



Missouri Department of Transportation
Transportation Planning
Crashes by Type for 2009
321 Fatal Crashes "ON" Roadway

Date: Aug 4, 2010
Time: 10:16:01 AM

Crash Type	Fatal Crashes
PEDESTRIAN	37
OVERTURNED	22
OTHERS COMBINED	36
MOTOR VEHICLE IN TRAFFIC	226

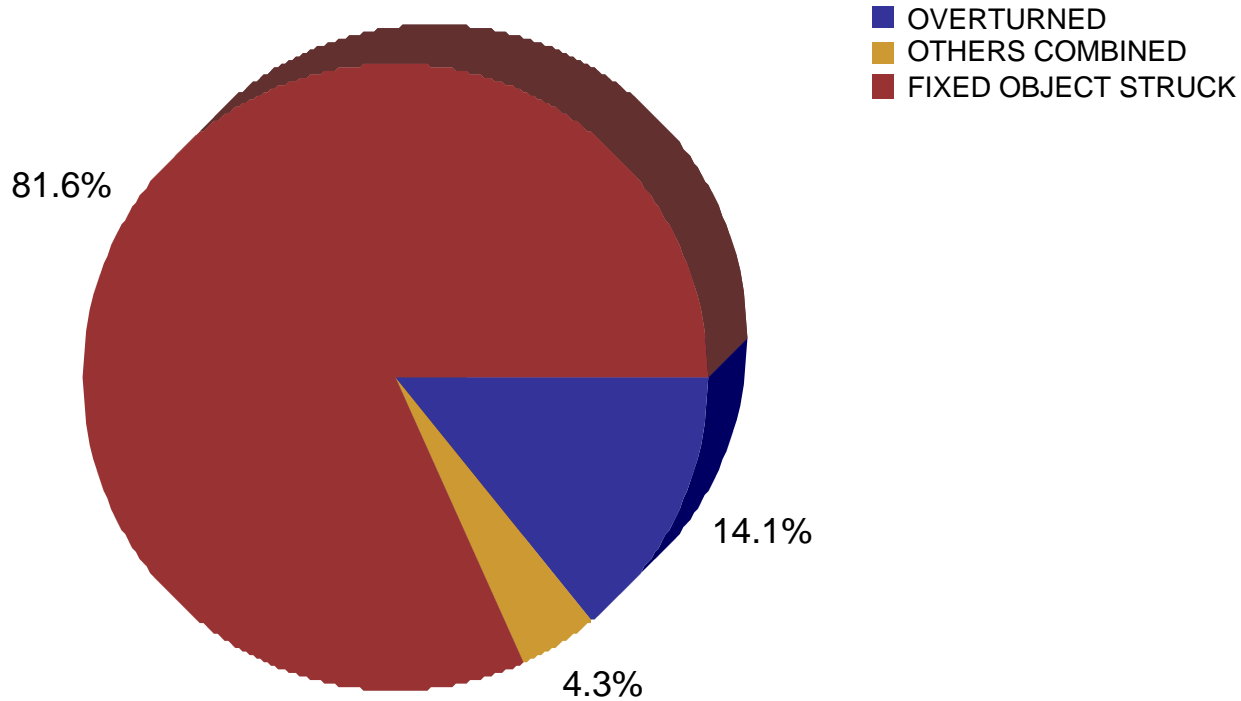




Missouri Department of Transportation
Transportation Planning
Crashes by Type for 2009
256 Fatal Crashes "OFF" Roadway

Date : Aug 3, 2010
Time : 4:57:45 PM

Crash Type	Fatal Crashes
OVERTURNED	36
OTHERS COMBINED	11
FIXED OBJECT STRUCK	209



Chapter 1-B : CRASHES BY CONTRIBUTING CIRCUMSTANCES

This section deals with the circumstances that contributed to crashes in 2009. The total number of reported crashes is somewhat less than the total number of contributing circumstances and the number of drivers because each crash could involve one or more drivers and one or more contributing circumstance.

Chapter 1-C : CRASHES BY POPULATION GROUPING

In this section, crashes are grouped according to the population characteristics of their location. Four (4) categories are used: rural, urban (population 5,000 to 49,999), urbanized (population 50,000 to 199,999) and metropolitan (population 200,000 or greater).

Currently, all metropolitan crashes have been included in the urbanized grouping.

Chapter 1-D : CRASHES BY ROUTE MARKING

This section separates fatal, injury and PDO crashes from the total number of crashes based on the route marking of the highways on which they occurred. In 2009 state numbered routes had the highest number of total crashes and the highest number of fatal crashes.

Chapter 1- E: CRASHES BY CLASS

This section breaks out crashes based on the class crash. In 2009 ____ crashes accounted for most of the fatal crashes. ____ crashes accounted for the majority of total crashes.

Chapter 1-F : CRASHES BY DRIVER'S AGE

This section examines driver age in relation to crash involvement. The total number of drivers by age group consists of individuals holding a valid operators or chauffeurs license in the state of Missouri.

Chapter 1-G : CRASHES BY HOUR, DAY AND MONTH

This section breaks out the 2009 fatal, injury and PDO crashes based on three categories which include time of day, day of week and month.

The hour of ___ to ___ had the highest percentage of fatal crashes. The hour of ___ to ___ had the highest percentage of total crashes.

DD _____ accounted for the highest amount of fatal crashes and ___ DD _____ accounted for the highest number of total crashes.

MM ___ had the largest number of fatal crashes in 2009. MM ___ had the largest number of injury crashes and MM ___ ber the largest number of total crashes in 2009.

Chapter 1-H : CRASHES BY WEATHER CONDITION

The examination of weather conditions reveals that, in 2009, a majority of fatal, injury and total crashes occurred under ideal weather conditions.

Chapter 1-I : CRASHES BY VEHICLE TYPE

This section reviews the types of vehicles involved in crashes in 2009. The totals shown represent all vehicles as a separate crash; therefore, vehicle totals will not agree with the crash totals.

Chapter 1-J : CRASHES BY LIGHT CONDITION

This section reviews the total reported crashes to determine whether they occurred during dark hours or daylight hours.

During 2009, the majority of total and fatal crashes occurred during ___ daylight hours.

Chapter 1-K : CRASHES BY FIXED OBJECT STRUCK

This section examines all accidents involving vehicle contact with a fixed object. In 2009, the majority of fatal and total crashes involved ___embankments and trees as the fixed object.

Chapter 1-L : CRASHES BY INTERSECTION TYPE

This section breaks out 2009 crashes based on severity levels and intersection types.

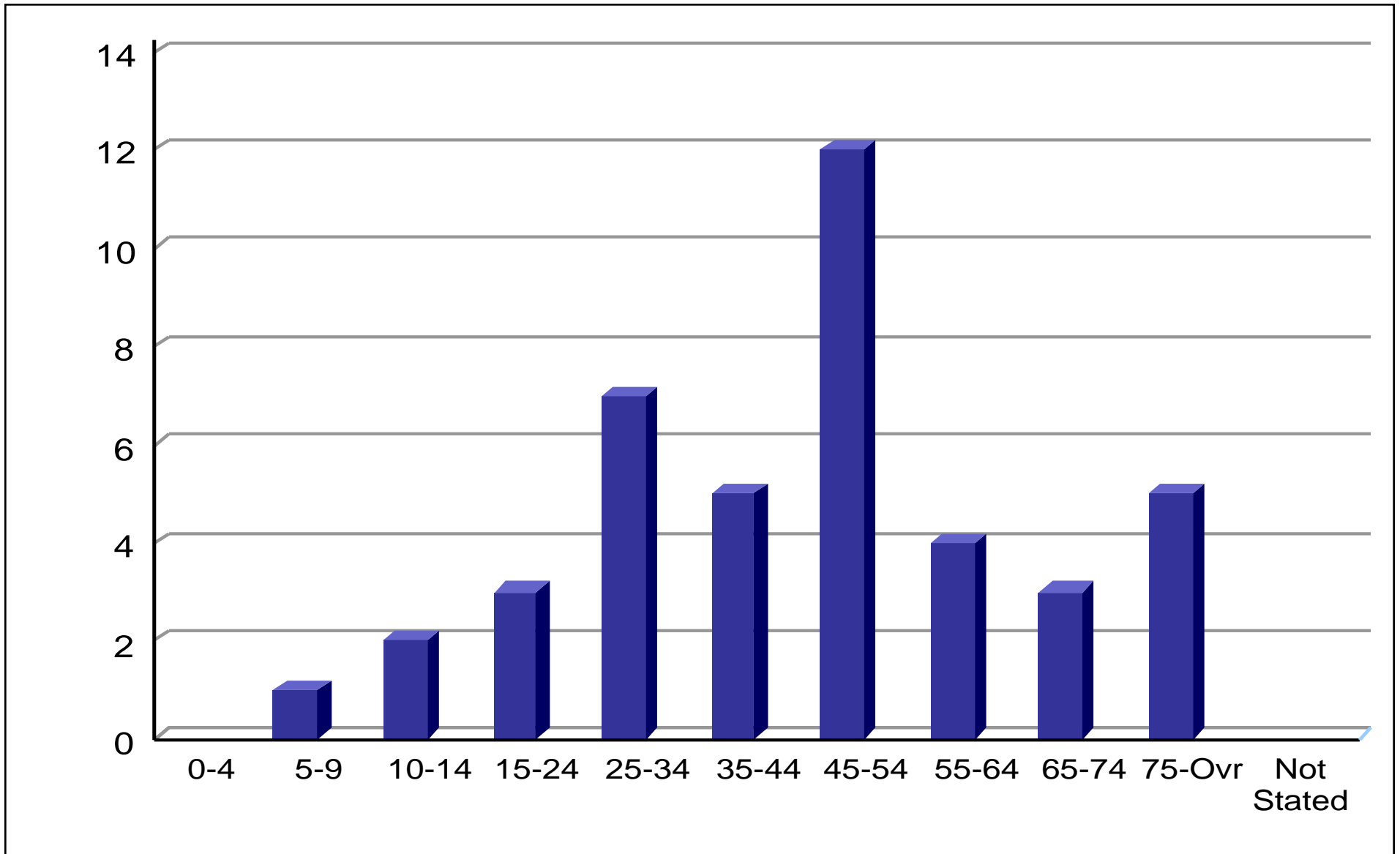
Chapter 1-M : CRASHES INVOLVING PEDESTRIANS

The following section contains 2009 data for pedestrian fatalities and injury based on their maneuver along with light condition and age.



Missouri Department of Transportation
Transportation Planning
Pedestrian Fatalities by Age For 2008
42 Pedestrian Fatalities

Date: Aug 17, 2009
Time: 11:24:01 AM

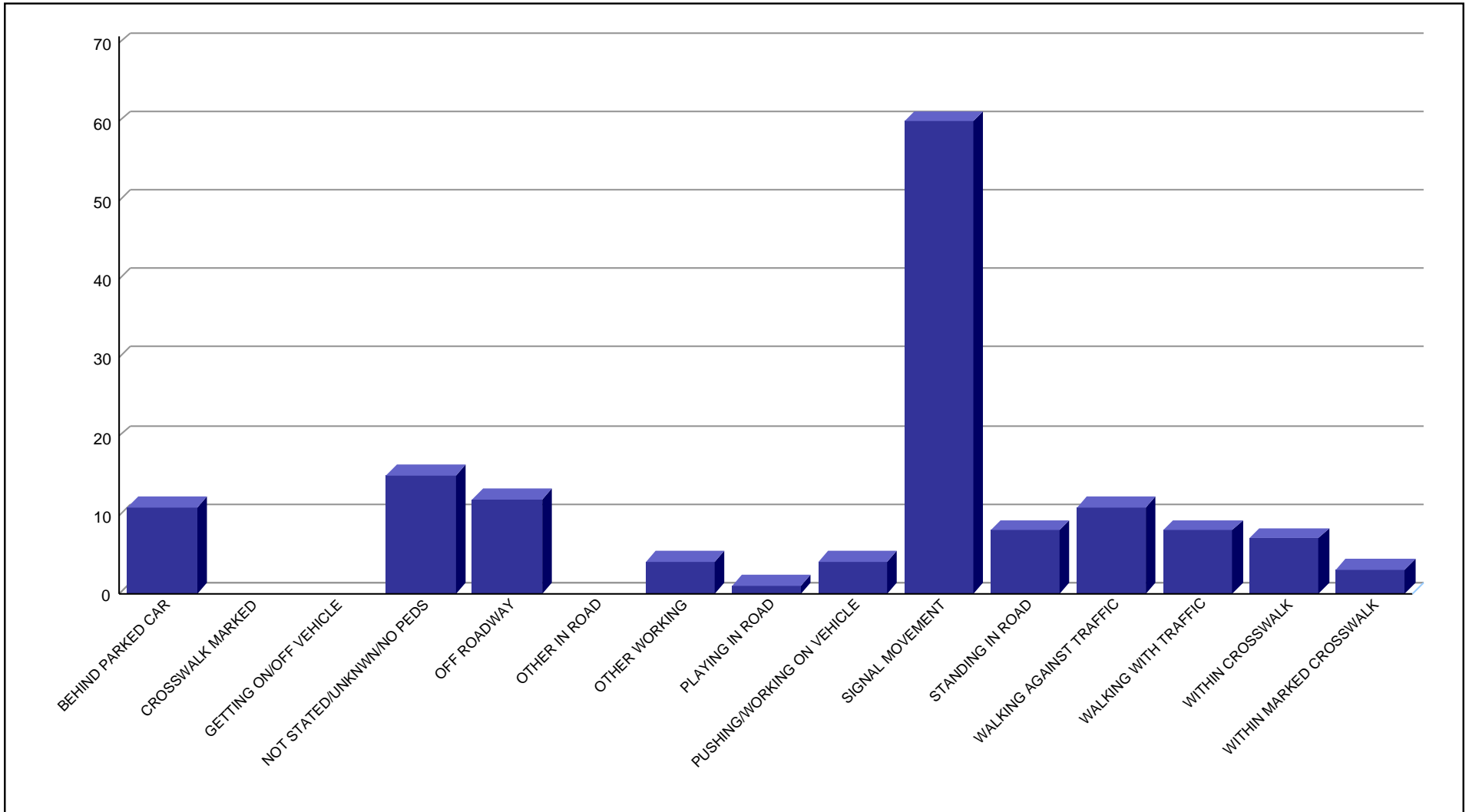


This report contains information that is protected from disclosure by federal law, 23 USC Section 409 and the Missouri Open records Law (Sunshine Act), Section 610.021 RSMo. Please review MoDOT's policy and procedure manual on the Sunshine Act before releasing any of the information contained herein.



Missouri Department of Transportation
Transportation Planning
Crashes by Pedestrian Maneuver by Light Condition for 2008
144 Injuries in Day Condition

Date: Aug 17, 2009
Time: 4:04:03 PM

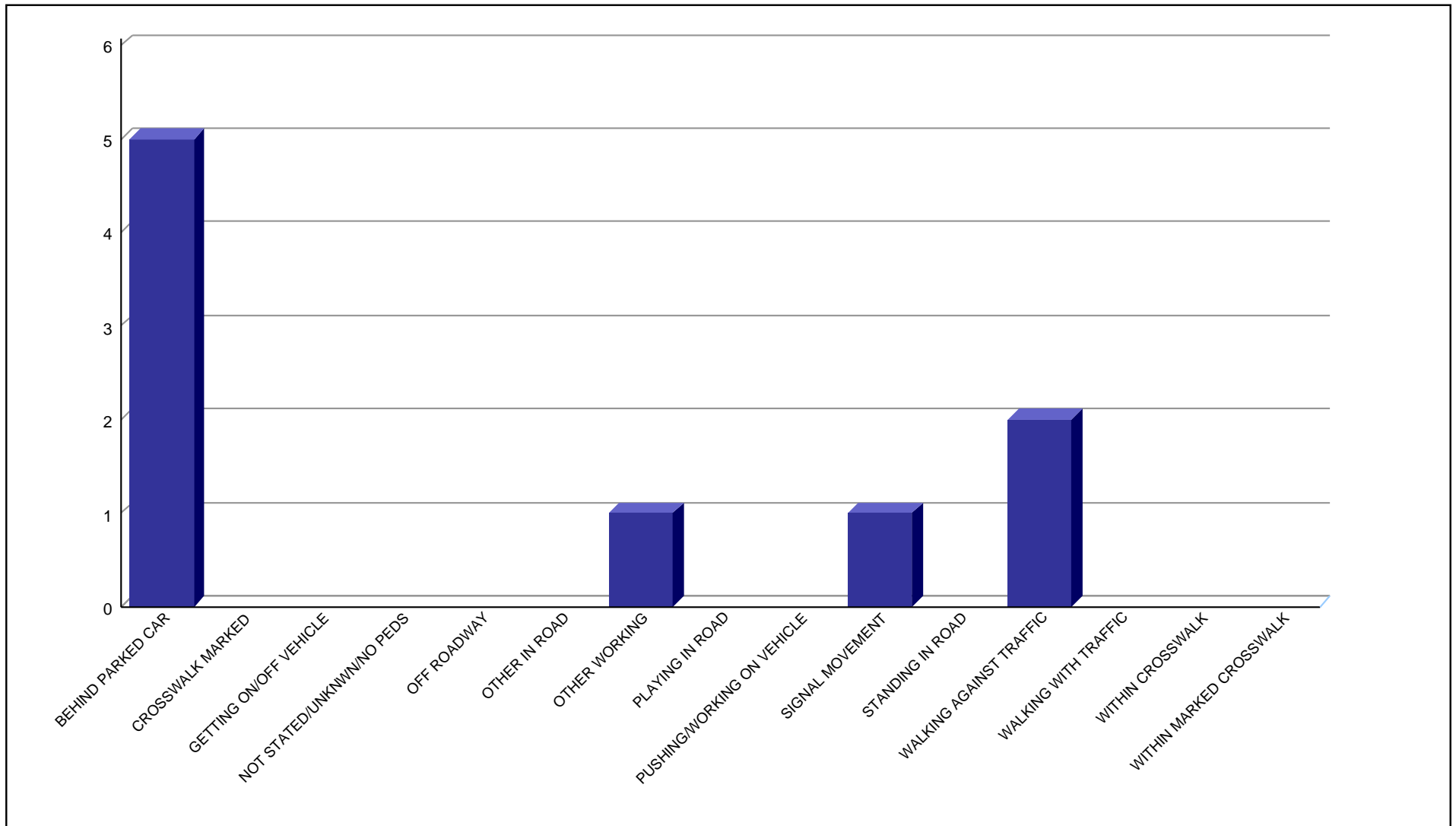


This report contains information that is protected from disclosure by federal law, 23 USC Section 409 and the Missouri Open records Law (Sunshine Act), Section 610.021 RSMo. Please review MoDOT's policy and procedure manual on the Sunshine Act before releasing any of the information contained herein.



Missouri Department of Transportation
Transportation Planning
Crashes by Pedestrian Maneuver by Light Condition For 2008
9 Fatalities in Day Condition

Date: Aug 17, 2009
Time: 11:21:34 AM

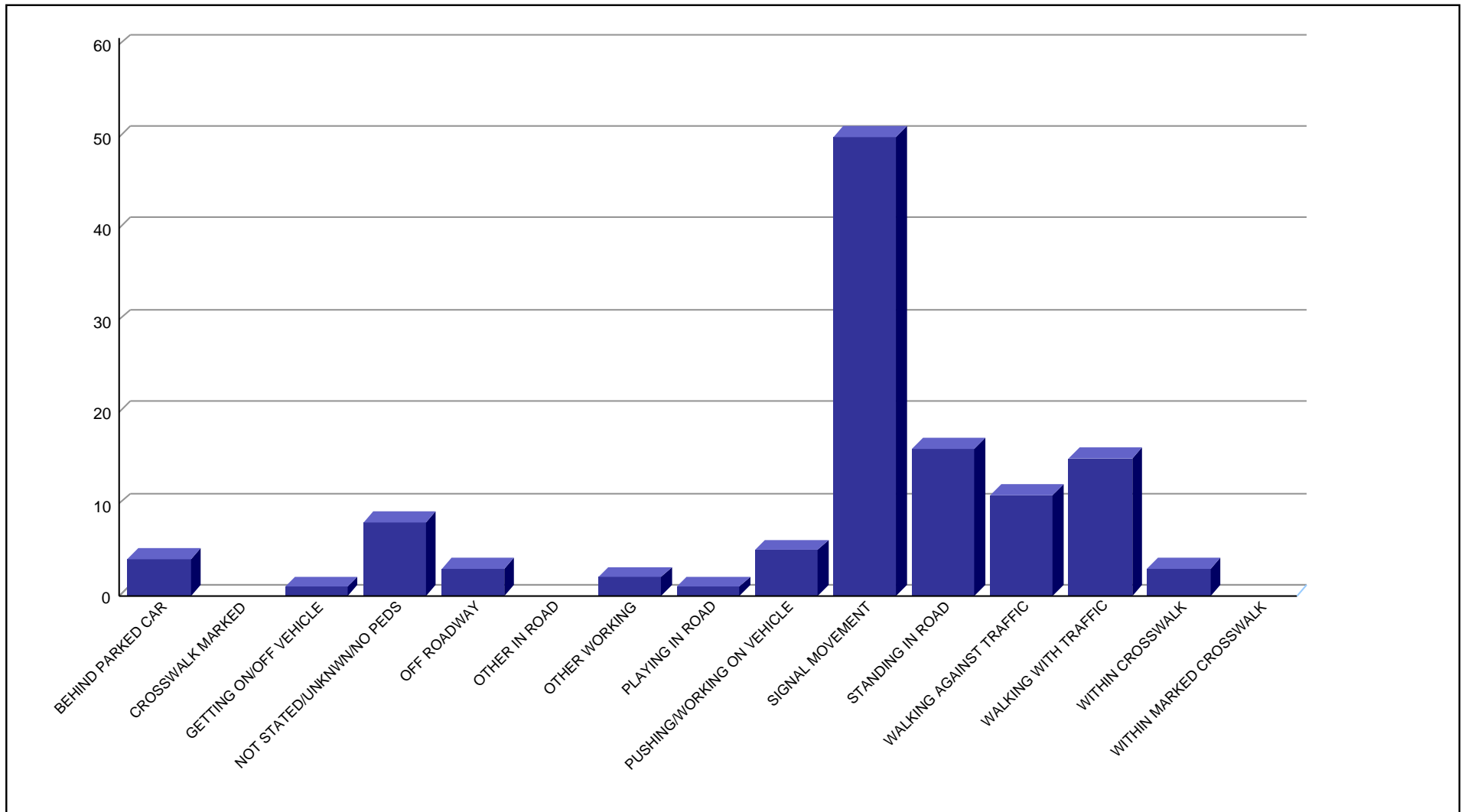


This report contains information that is protected from disclosure by federal law, 23 USC Section 409 and the Missouri Open records Law (Sunshine Act), Section 610.021 RSMo. Please review MoDOT's policy and procedure manual on the Sunshine Act before releasing any of the information contained herein.



Missouri Department of Transportation
Transportation Planning
Crashes by Pedestrian Maneuver by Light Condition For 2008
119 Injuries in Dark Condition

Date: Aug 17, 2009
Time: 11:27:35 AM

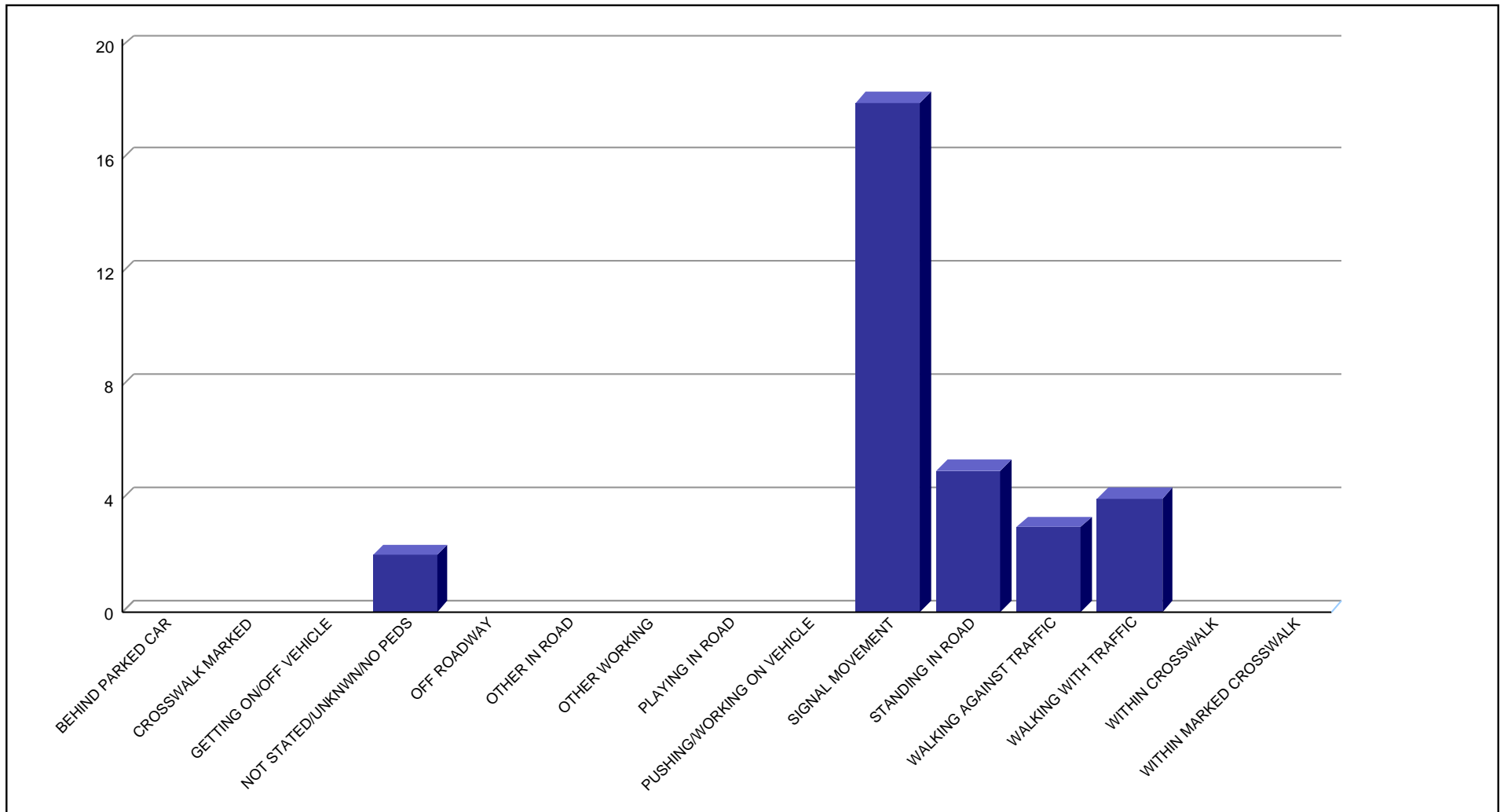


This report contains information that is protected from disclosure by federal law, 23 USC Section 409 and the Missouri Open records Law (Sunshine Act), Section 610.021 RSMo. Please review MoDOT's policy and procedure manual on the Sunshine Act before releasing any of the information contained herein.



Missouri Department of Transportation
Transportation Planning
Crashes by Pedestrian Maneuver by Light Condition For 2008
32 Fatalities in Dark Condition

Date: Aug 13, 2009
Time: 4:44:48 PM



This report contains information that is protected from disclosure by federal law, 23 USC Section 409 and the Missouri Open records Law (Sunshine Act), Section 610.021 RSMo. Please review MoDOT's policy and procedure manual on the Sunshine Act before releasing any of the information contained herein.

Chapter 1-N : CRASHES BY INVESTIGATOR

Of the __77,048 crashes occurring on the State Highway System of Missouri in 2009, the majority were investigated by the State Highway Patrol.

Of the __619 fatal crashes that occurred in 2009, the majority were investigated by the State Highway Patrol.



**Missouri Department of Transportation
Transportation Planning
Crashes by Investigator for 2008**

Date: Aug 17, 2009
Time: 4:08:37 PM

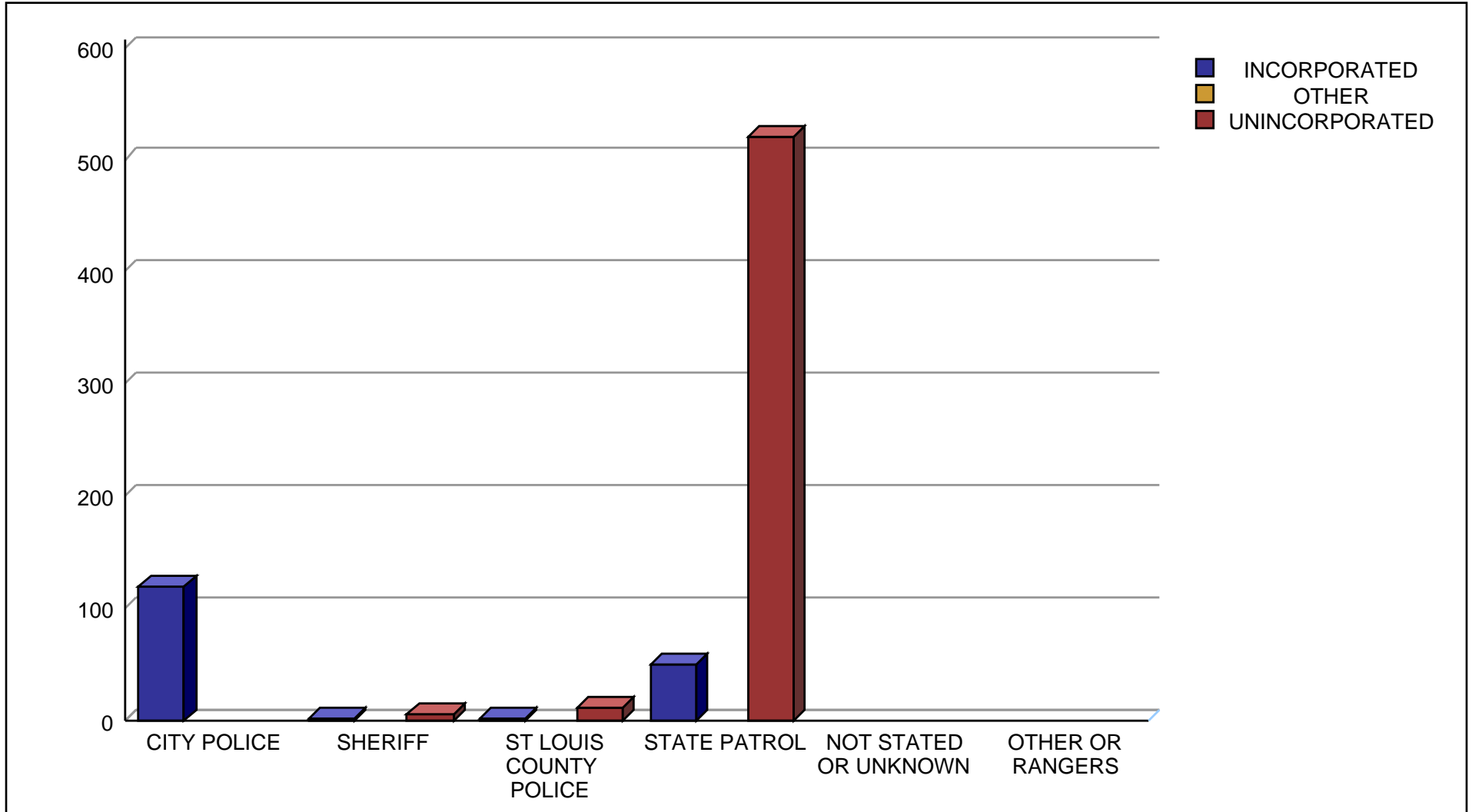
INVESTIGATOR	Fatal Crashes	Total Fatalities	Injury Crashes	Total Injuries	PDO Crashes	Total Crashes
UNINCORPORATED						
UNINCORPORATED SHERIFF	5	5	610	807	1,646	2,261
UNINCORPORATED ST LOUIS COUNTY POLICE	11	11	751	1,059	2,327	3,089
UNINCORPORATED STATE PATROL	452	520	8,184	12,264	16,520	25,156
INCORPORATED						
INCORPORATED CITY POLICE	104	119	10,448	15,354	31,291	41,843
INCORPORATED SHERIFF	1	1	89	121	311	401
INCORPORATED ST LOUIS COUNTY POLICE	1	1	197	277	509	707
INCORPORATED STATE PATROL	45	49	748	1,104	2,659	3,452
RANGER						
OTHER OR RANGERS	0	0	28	41	111	139
NOT STATED						
NOT STATED OR UNKNOWN	0	0	0	0	0	0
Totals	619	706	21,055	31,027	55,374	77,048

This report contains information that is protected from disclosure by federal law, 23 USC Section 409 and the Missouri Open records Law (Sunshine Act), Section 610.021 RSMo. Please review MoDOT's policy and procedure manual on the Sunshine Act before releasing any of the information contained herein.



Missouri Department of Transportation
Transportation Planning
Fatal Crashes by Investigator Chart for 2008
619 Fatal Crashes

Date: Aug 17, 2009
Time: 4:09:55 PM

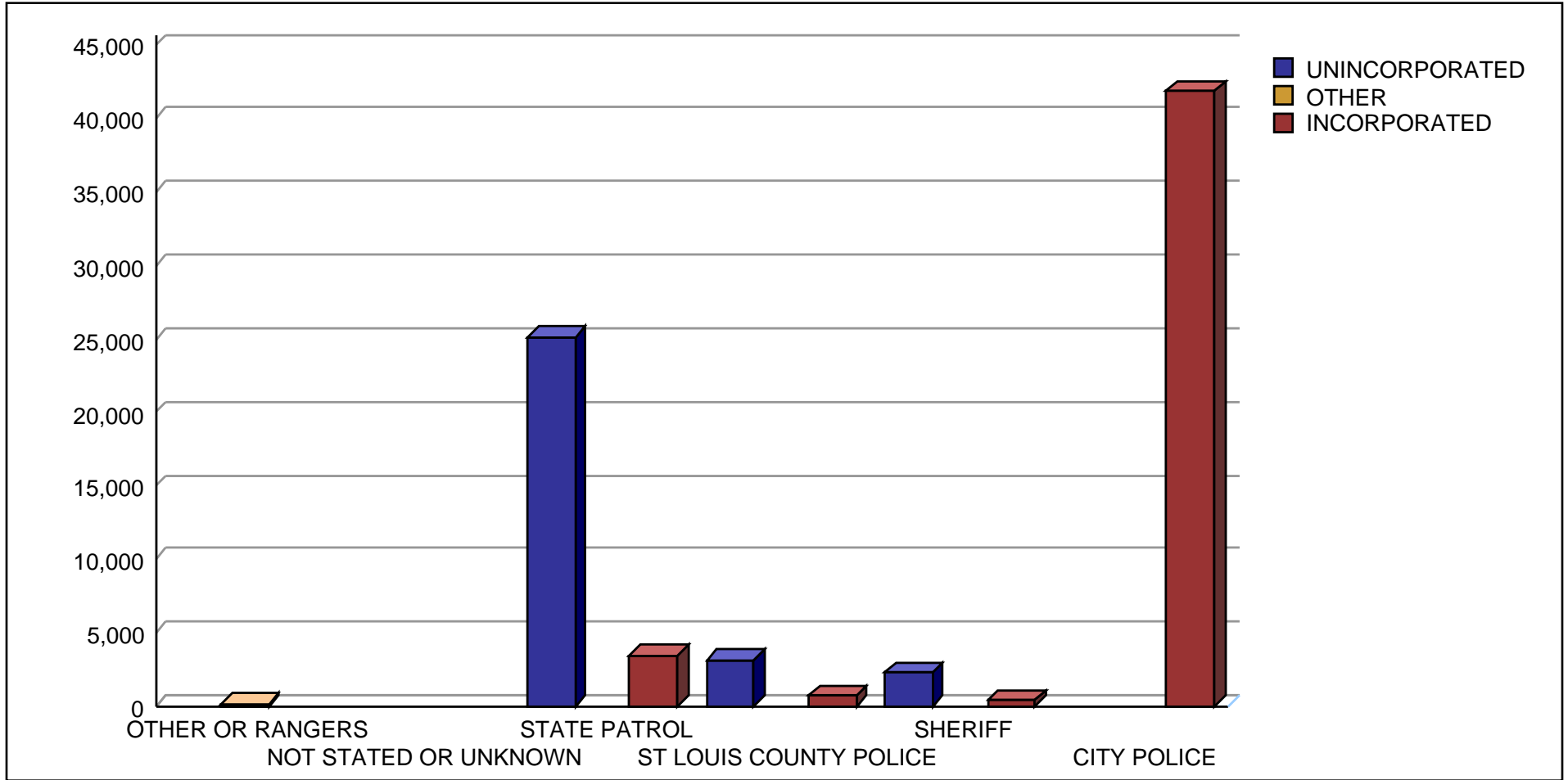


This report contains information that is protected from disclosure by federal law, 23 USC Section 409 and the Missouri Open records Law (Sunshine Act), Section 610.021 RSMo. Please review MoDOT's policy and procedure manual on the Sunshine Act before releasing any of the information contained herein.



Missouri Department of Transportation
Transportation Planning
Total Crashes by Investigator Chart for 2008
77,048 Total Crashes

Date: Aug 17, 2009
Time: 4:10:49 PM



This report contains information that is protected from disclosure by federal law, 23 USC Section 409 and the Missouri Open records Law (Sunshine Act), Section 610.021 RSMo. Please review MoDOT's policy and procedure manual on the Sunshine Act before releasing any of the information contained herein.