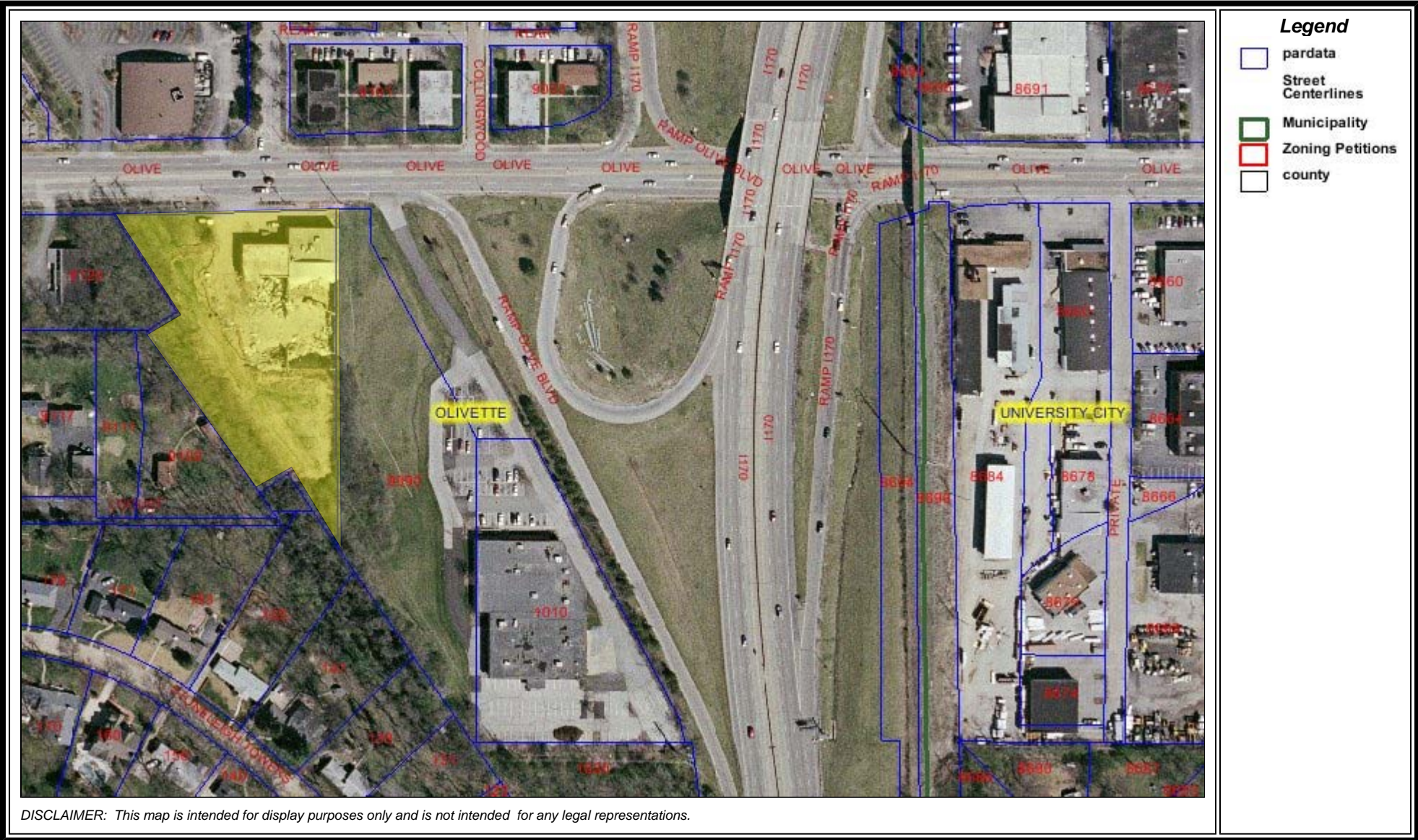


St. Louis County Property Data Search

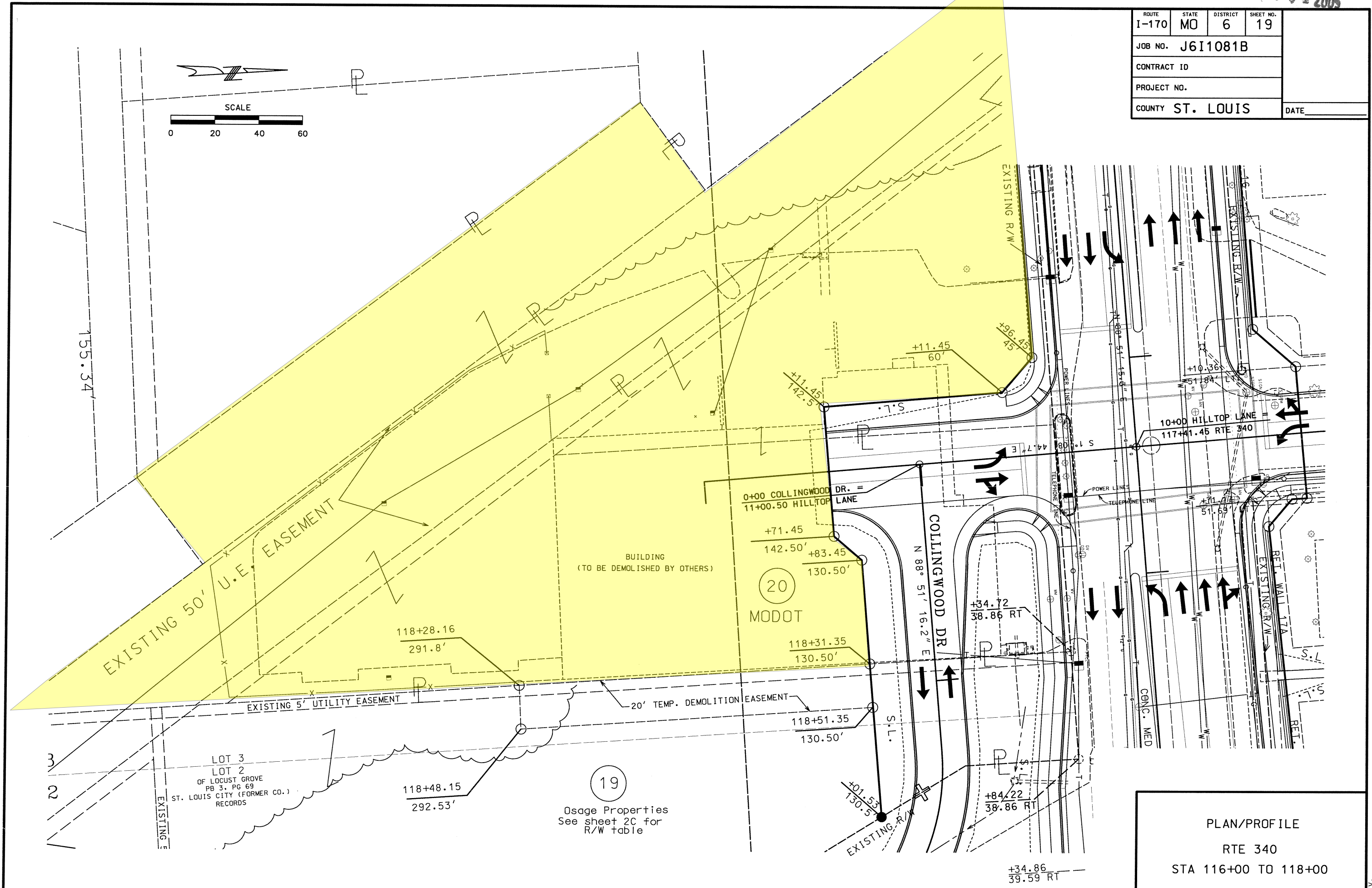
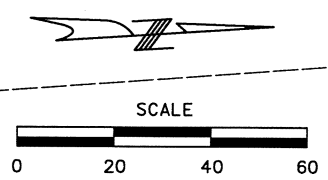


[\[Click here to Print\]](#)

For best results set the print page orientation to **Landscape**.

MAY 04 2005

ROUTE	STATE	DISTRICT	SHEET NO.
I-170	MO	6	19
JOB NO. J6I1081B			
CONTRACT ID			
PROJECT NO.			
COUNTY	ST. LOUIS	DATE	

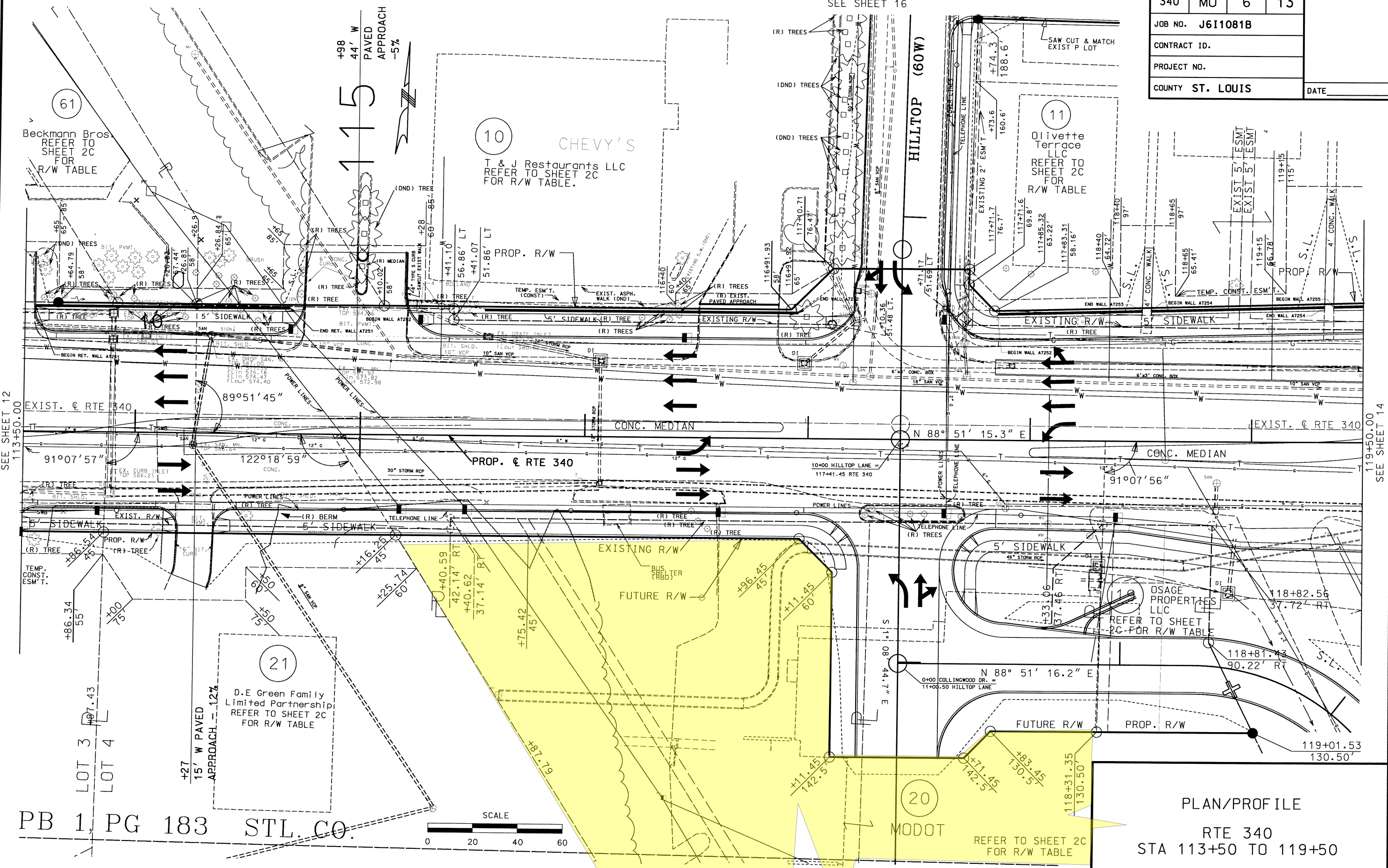


LOT 3
LOT 2
OF LOCUST GROVE
PB 3, PG 69
ST. LOUIS CITY (FORMER CO.)
RECORDS

19
Osage Properties
See sheet 2C for
R/W table

PLAN/PROFILE
RTE 340
STA 116+00 TO 118+00

ROUTE	STATE	DISTRICT	SHEET NO.
340	MO	6	13
JOB NO. J611081B			
CONTRACT ID.			
PROJECT NO.			
COUNTY ST. LOUIS			DATE



SEE SHEET 12
113+50.00

119+50.00
SEE SHEET 14

PB 1, PG 183 STL. CO.

PLAN/PROFILE
RTE 340
STA 113+50 TO 119+50

BASE MAPS 16L, 16K, 17L & 17K

GENERAL NOTES:

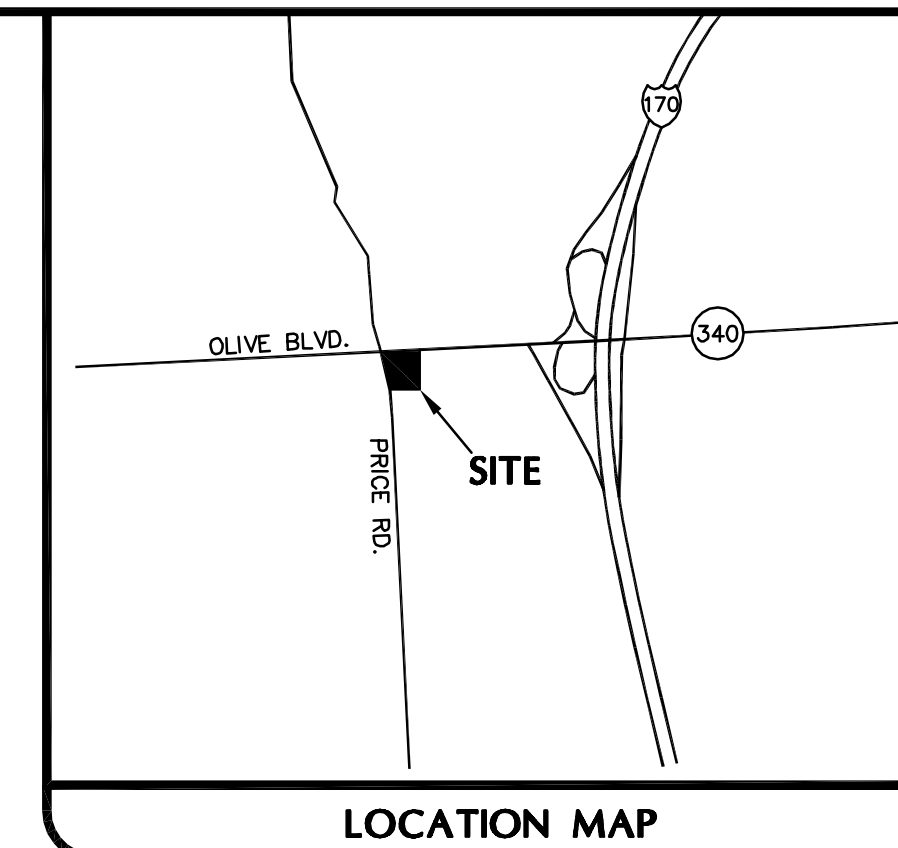
- 1) UNDERGROUND DETENTION WILL BE REQUIRED
- 2) EXISTING PROPERTY INFORMATION SHOWN IS FROM RECORD. ALL AREAS SHOWN SHOULD BE CONSIDERED APPROXIMATE. A RECENT SURVEY TO VERIFY THIS INFORMATION HAS NOT BEEN COMPLETED.

PROPERTY OWNER	BOOK/PAGE	LOC#	PROPERTY AREA
DE Green Family Limited Partnership	11325 / 2069	17L631041	±0.69 Ac.
Bullock Ronald Etal J/T	08520 / 2000	17L630903	±0.19 Ac.
Kalliongis Marjorie H	16135 / 1429	17L630912	±0.46 Ac.
9141 Locust LLC	15786 / 1528	17L630105	±0.48 Ac.
Tabaka Eugene Etal	12740 / 1604	17L630116	±0.59 Ac.
Tabaka Francis Trustee	12936 / 1884	17L630721	±0.36 Ac.
Vatterott Christopher J & Nancy M H/W	16690 / 1118	17L630710	±0.64 Ac.
Abandoned railroad R-O-W			±0.04 Ac.
MoDOT			±1.87 Ac.
Locust R-O-W to be vacated			±0.20 Ac.
Total			±5.90 Ac.

TOTAL SITE AREA - ± 5.90 Acres

PARKING/BUILDING DATA

BUILDING	BUILDING AREA	REQUIRED PARKING RATIO	PARKING REQUIRED	PARKING PROVIDED
RESTAURANT	2,500 S.F.	1/3 SEATS (60 SEATS) 2/3 EMP. (12 EMP.)	28	28
RETAIL A	11,000 S.F.	4.0 PS/1000 SF	44	44
BANK	3,200 S.F.	5 PS/TELLER WINDOW	20	20
TOTAL	16,700 S.F.		92	92



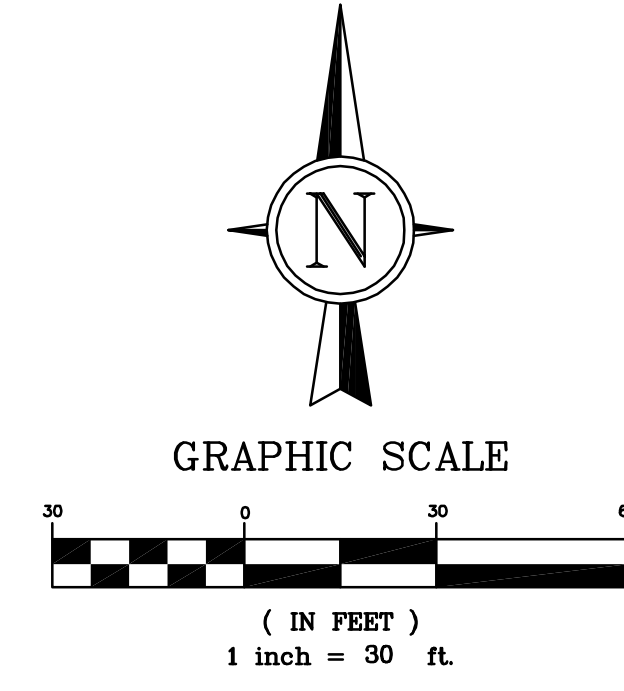
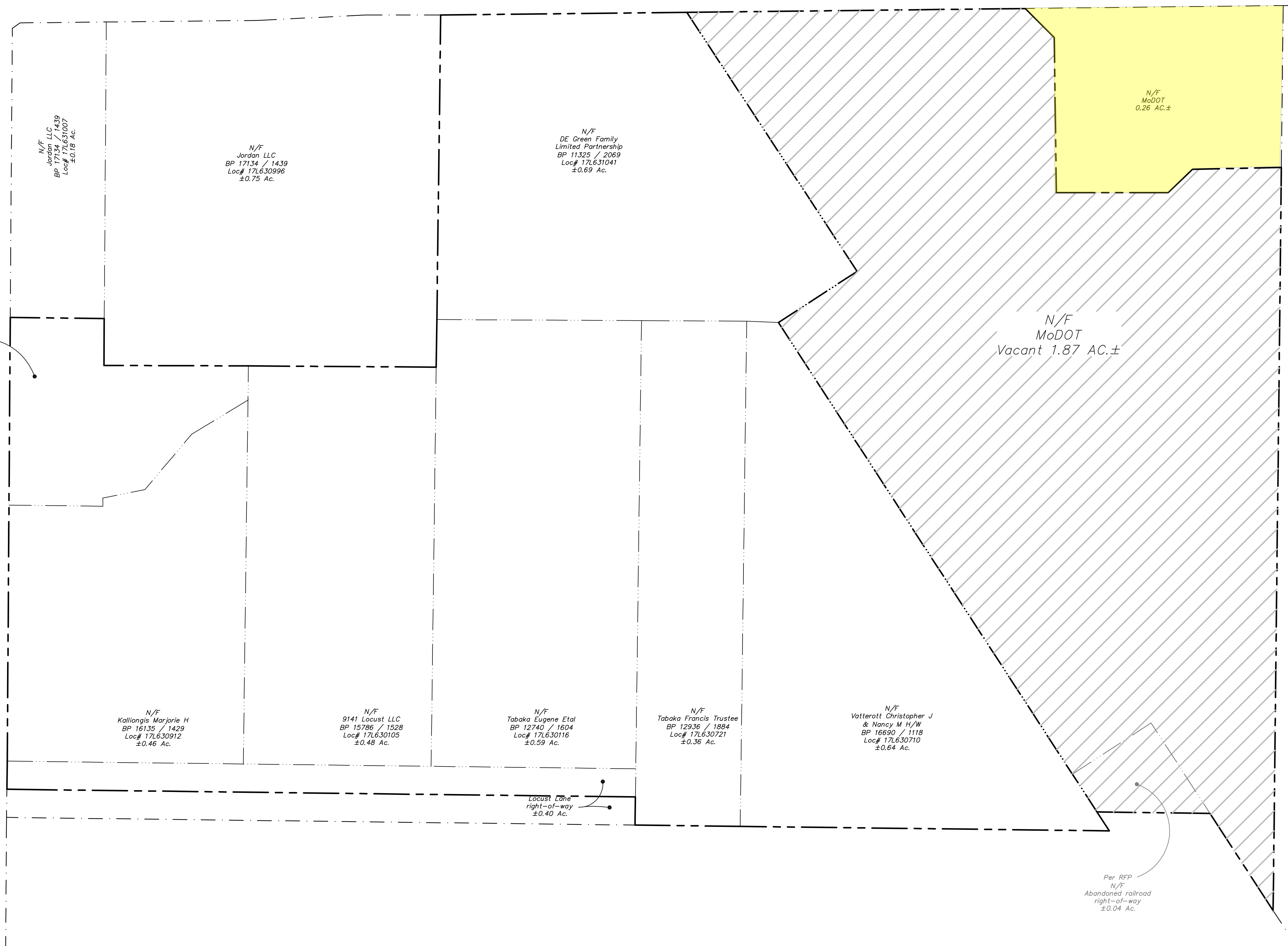
GRIMES CONSULTING, INC.
Civil Engineering & Surveying Services
12300 OLD TESSON ROAD
SUITE 3000
ST. LOUIS, MO. 63128
PH (314) 848-6000
FAX (314) 848-6010

REV. NO.	REMARKS	DATE
1	REV MODOT AREA	05/29/08

**OLIVETTE RETAIL CENTER
OLIVETTE/I-170 INTERCHANGE**

**CONCEPT
SITE SKETCH**

JOB NUMBER:	1836
DRAWN BY:	TMM
DATE:	04/02/08
CHECKED BY:	JRG
DATE:	04/02/08
SHEET:	C1.v



J:\1836\Preliminary\1836 - CSSS CIV - Restaurant-Site-Bank2.dwg 15/29/2008 4:12 PM Dhive McCuddy



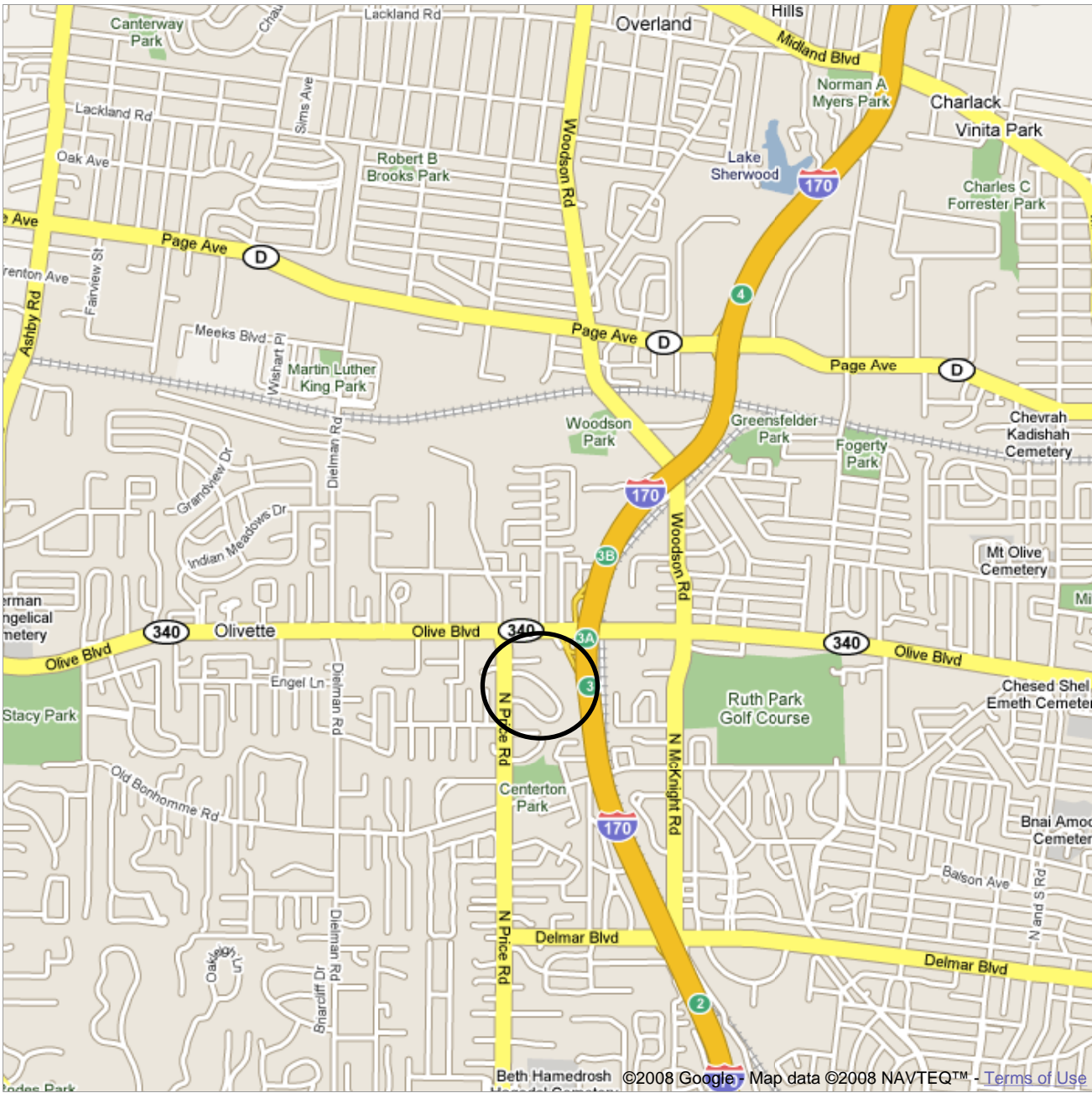
120 S. CENTRAL AVENUE - SUITE 500
ST. LOUIS, MO 63105
PH. (314) 727-6664 FAX (314) 727-6101

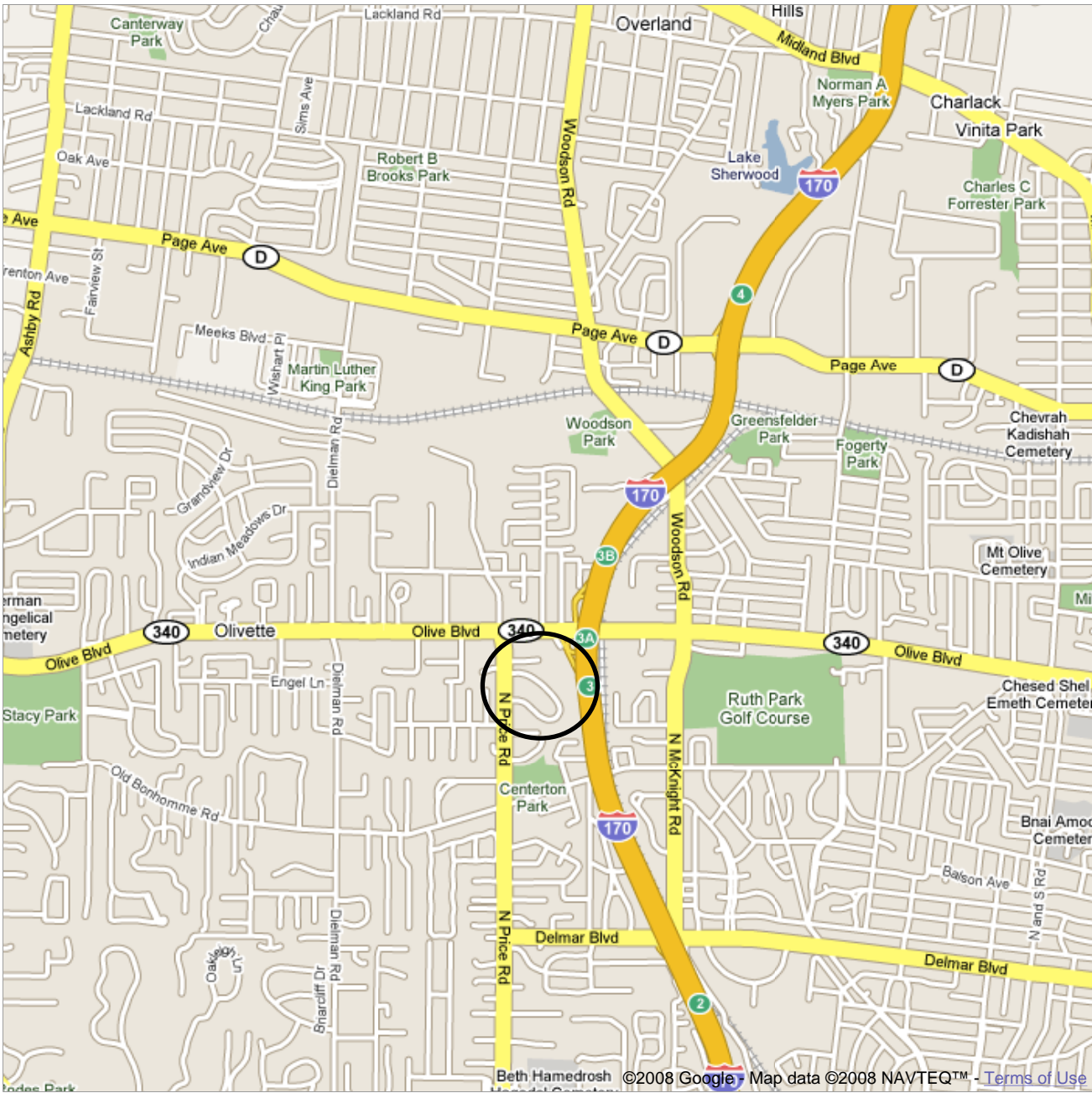
© 2008 Grimes Consulting, Inc. All rights reserved.

My Notes

NEW! Try Live Search 411
Dial 1-800-CALL-411 for latest info







St. Louis County Property Data Search



[\[Click here to Print\]](#)

For best results set the print page orientation to **Landscape**.