

Appraisal Report
for the
Missouri Department of Transportation
of the
Halltown Maintenance Facility
Located in Lawrence County on Route O



(viewing northwest along Route O)

Prepared By:

Randy Coffey



(viewing southeast from I-44)



Overall area behind the equipment service building (viewing southwest)



Equipment service building (viewing west)



Equipment service building (viewing northeast)



Storage building



Material shed, storage building and chloride tank (viewing west)



Fuel tanks and concrete containment area



Oil tanks



Spreader hanger located west of equipment building (viewing northeast)



Propane tank



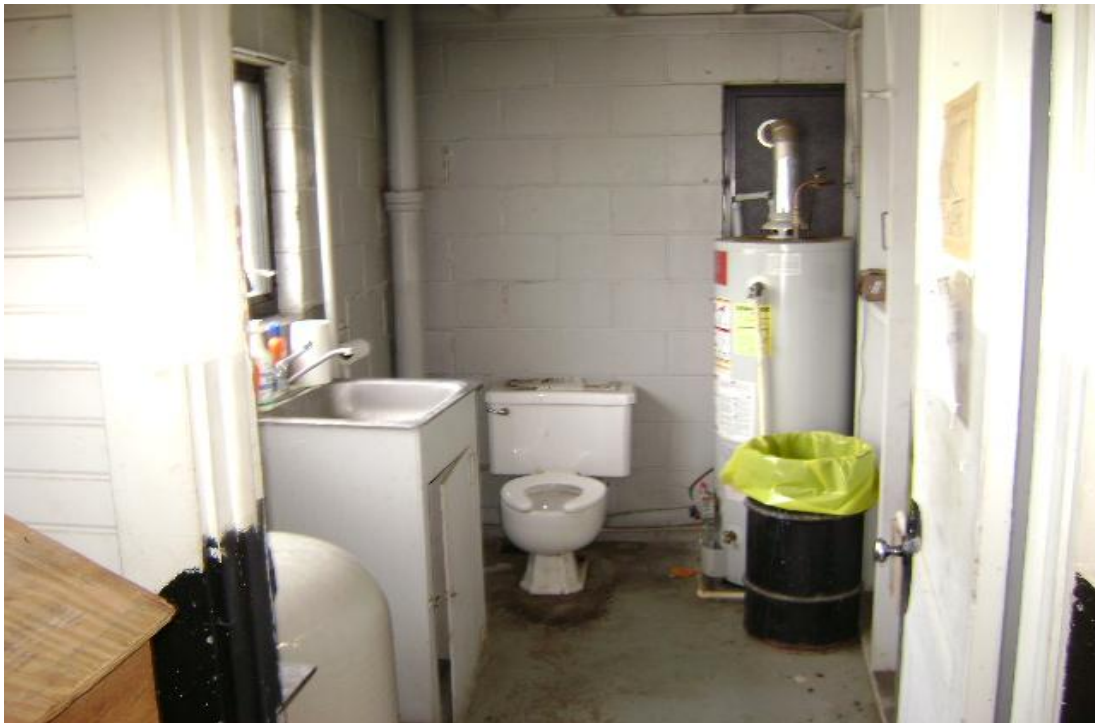
Interior of equipment building (south side)



Office



Storage room



Bathroom



Interior of equipment building (north side)