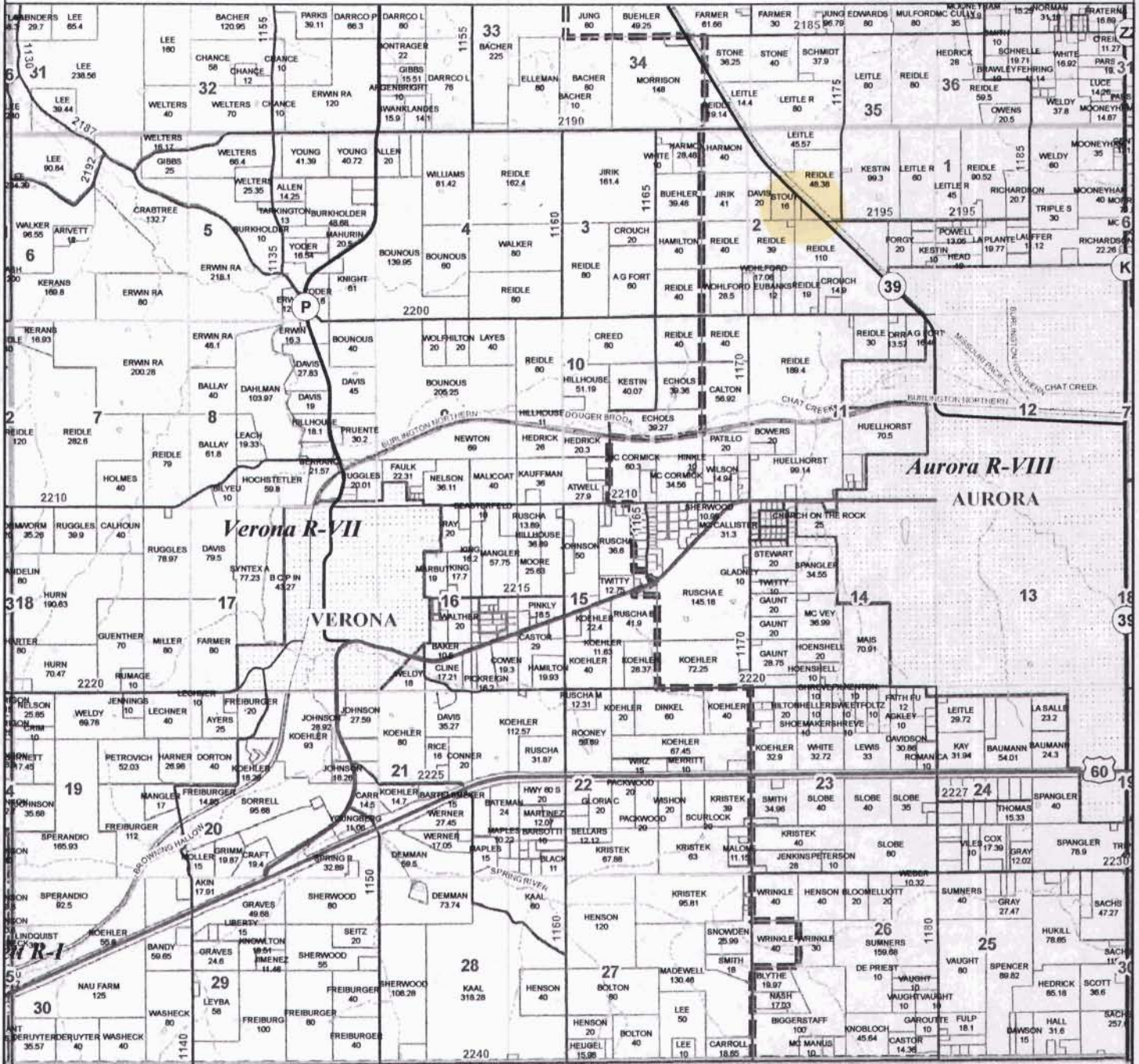


# Lawrence County, MO

## T26N-R26W



Map Date: Apr 16, 2009

This data was primarily developed for tax purposes and is not considered survey accurate.

Lawrence County Commission  
 Sam Goodman - Presiding Commissioner  
 Rodney Barnes - Associate Commissioner  
 Earl Dotson - Associate Commissioner

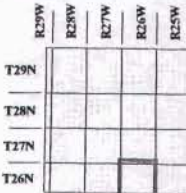
Most parcels > 10 ac labeled

GIS & Map Development By:

MIDLAND GIS SOLUTIONS

501 N Market  
 Maryville, MO 64466  
 (860) 962-0090  
 www.midlandgis.com

Data Courtesy Lawrence County  
 Geographic Information System  
 Doug Bowerman - Assessor



### Legend

- County Boundary
- City Limits
- Township-Range
- Sections
- Subdivisions
- Water
- Land Ownership
- US Highways
- ST Highways
- CO Highways
- Streets / Roads
- Rail Roads
- Streams
- Land Hooks

34 T 27  
R 26 2190

35

39

4703547123

Lawrence

265

1175

8

T 26  
R 26

2

2195

