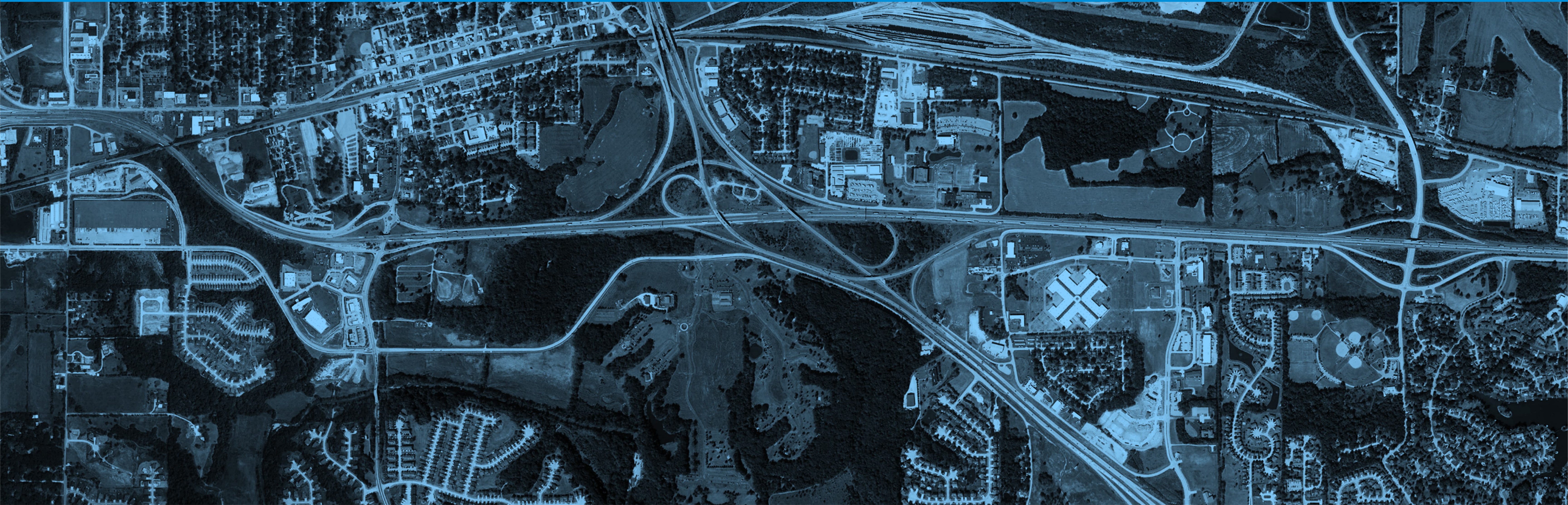




# I-64/I-70/US 61 Interchange

PUBLIC MEETING

August 22, 2022 | 4:30-6:30 p.m.

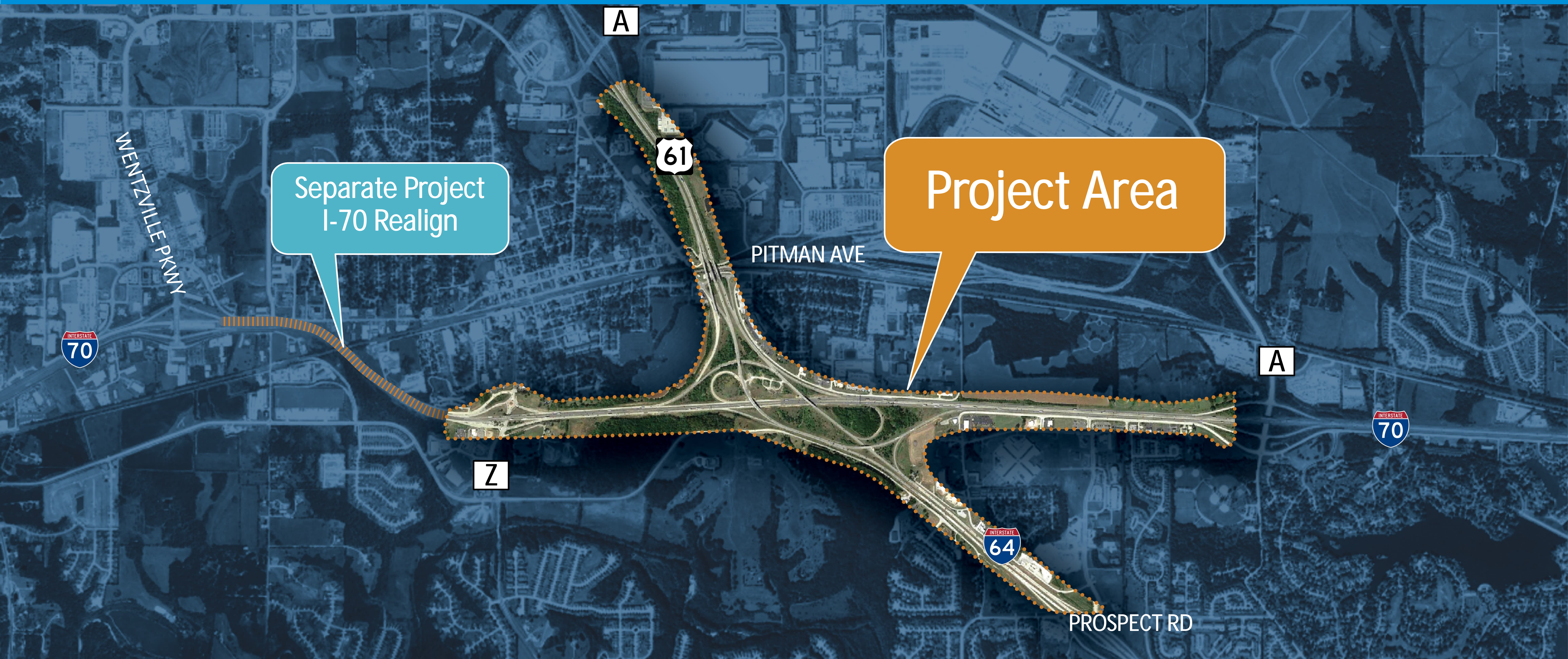


# Agenda

- Project Area
- Area Issues
- Conceptual Preferred Alternative
- Project Schedule



# Project Area



# Project Area Issues – Traffic Flow



## TRAFFIC CONGESTION

- (1) I-70 WB weaving segment between I-64 and Route Z
- (2) I-64 WB to I-70 WB ramp
- (3) US 61 SB at I-70



## Lane Changing/Weaving

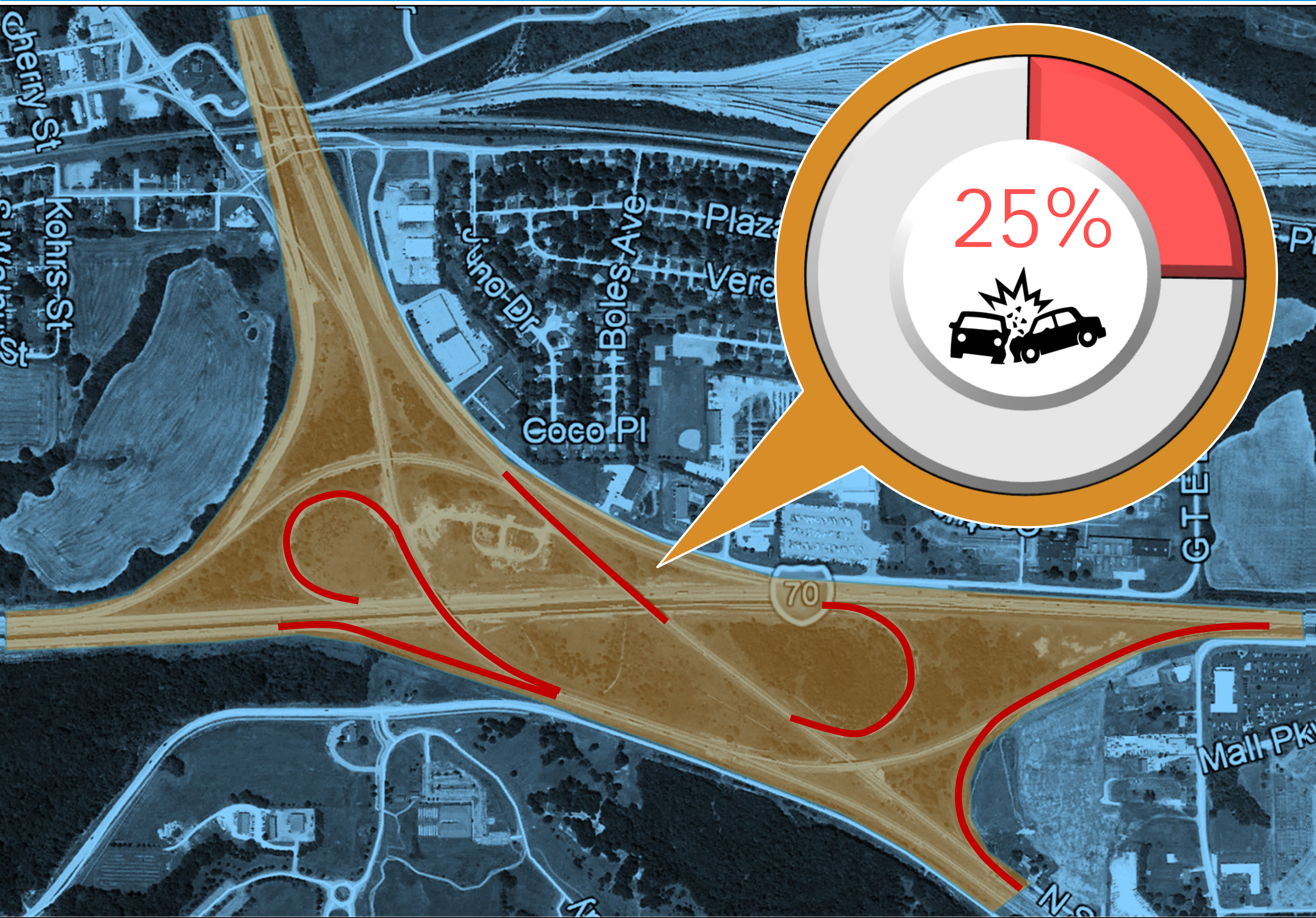
- (4) NB US 61 between I-70 WB ramp & Pitman Ave
- (5) EB I-64 between I-70 EB Ramps



## Outdated Ramps

- (6) I-64 WB to I-70 EB ramp
- (7) Loop Ramps merging lanes
- (8) Left-side exit ramps

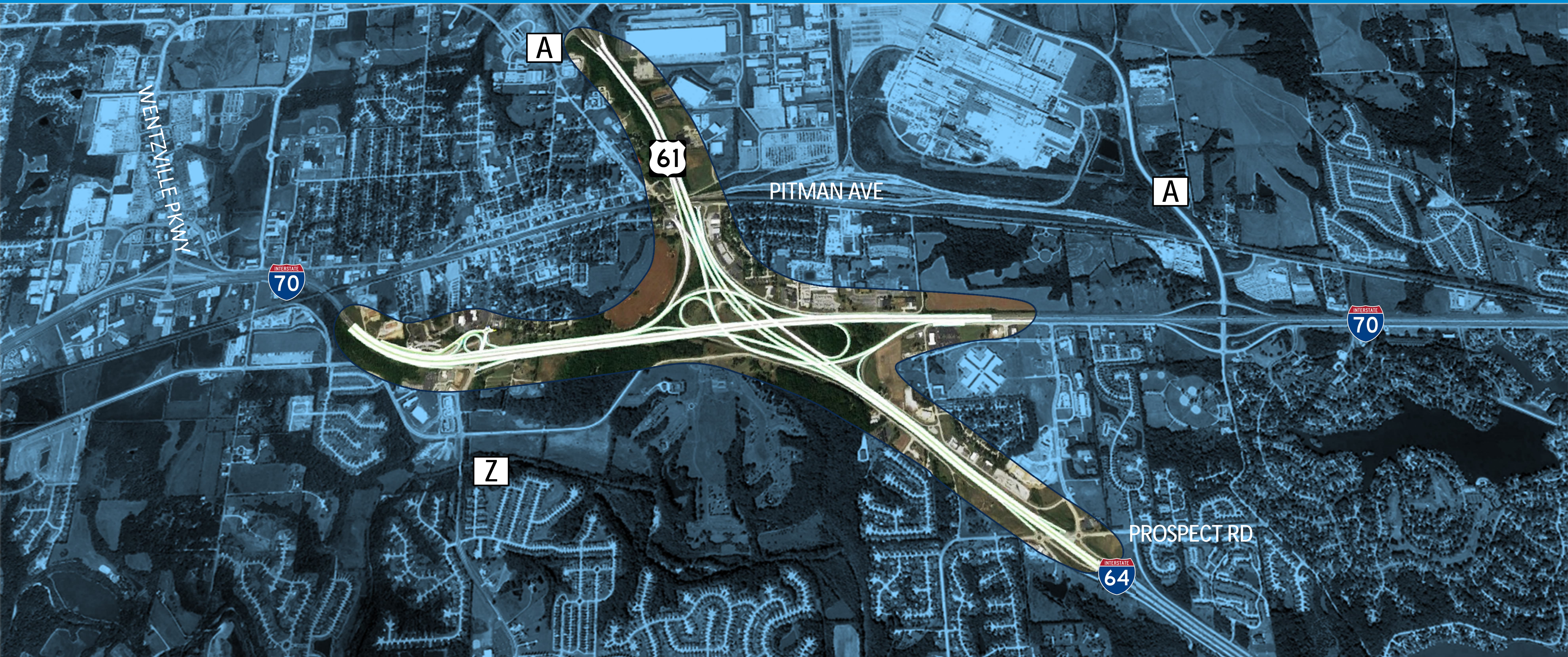
# Project Area Issues – Traffic Safety



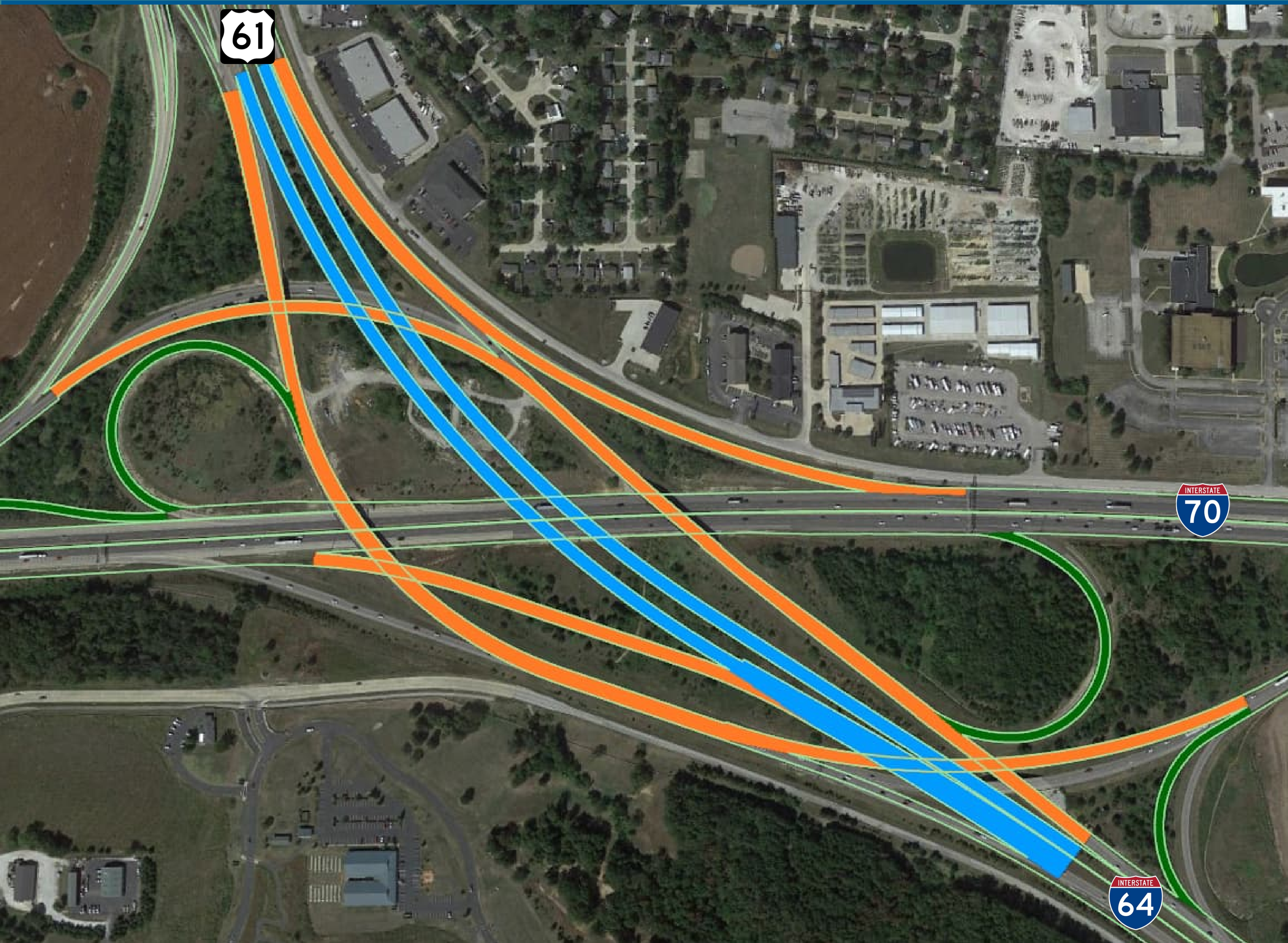
**Traffic Safety:**  
Annual historical crashes occurring at I-70/I-64 interchange are approximately 25% higher than predicted crashes

 High Crash Locations at Interchange

# Conceptual Preferred Alternative



# Conceptual Preferred Alt. – Main Interchange

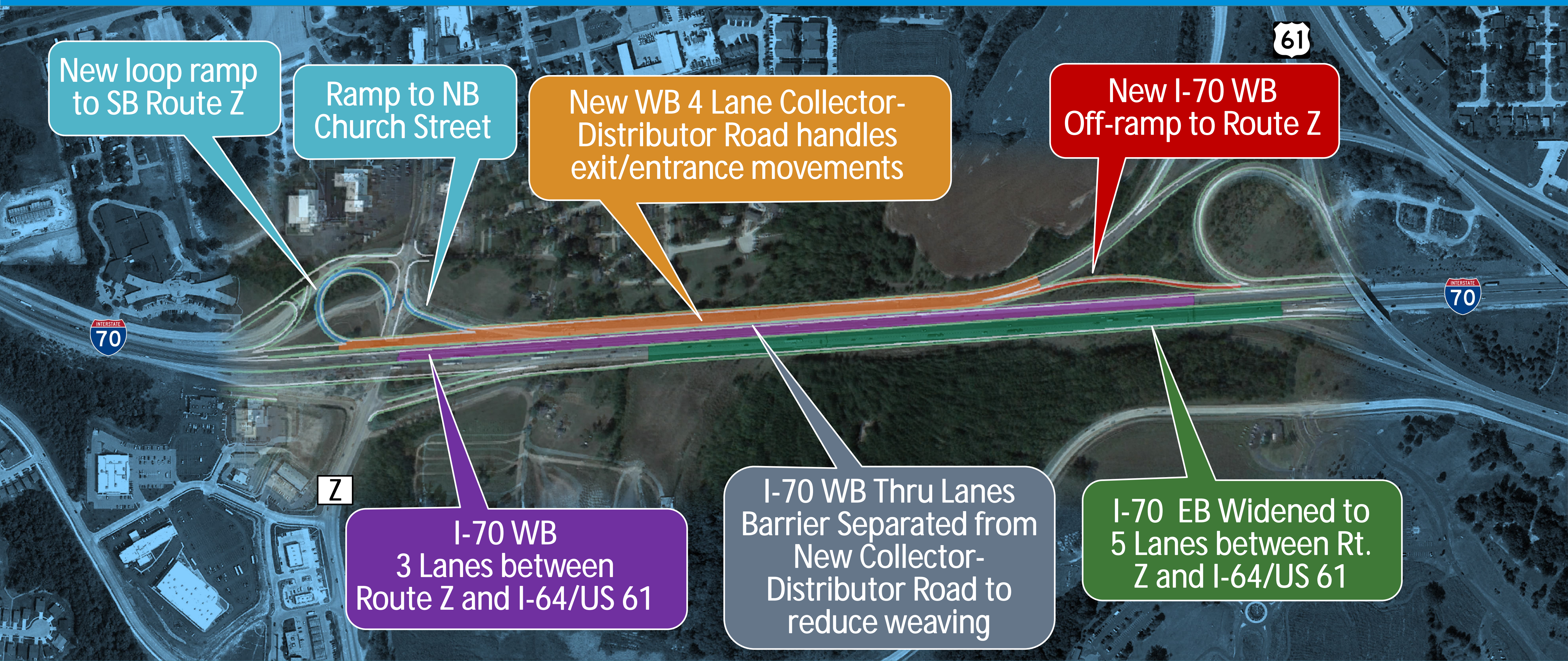


New Thru Lanes in Center of Interchange Eliminates Lefthand Exits from I-64/US 61 and reduces weaving (Shown in Blue)

Two Lane Ramps for Major Movements (Shown in Orange)

One Lane Ramps for Minor Movements (Shown in Green)

# Conceptual Preferred Alt. – Access to Route Z



New loop ramp to SB Route Z

Ramp to NB Church Street

New WB 4 Lane Collector-Distributor Road handles exit/entrance movements

New I-70 WB Off-ramp to Route Z

I-70 WB 3 Lanes between Route Z and I-64/US 61

I-70 WB Thru Lanes Barrier Separated from New Collector-Distributor Road to reduce weaving

I-70 EB Widened to 5 Lanes between Rt. Z and I-64/US 61



# Conceptual Preferred Alt. – Benefits of Improvement

## Traffic Flow:

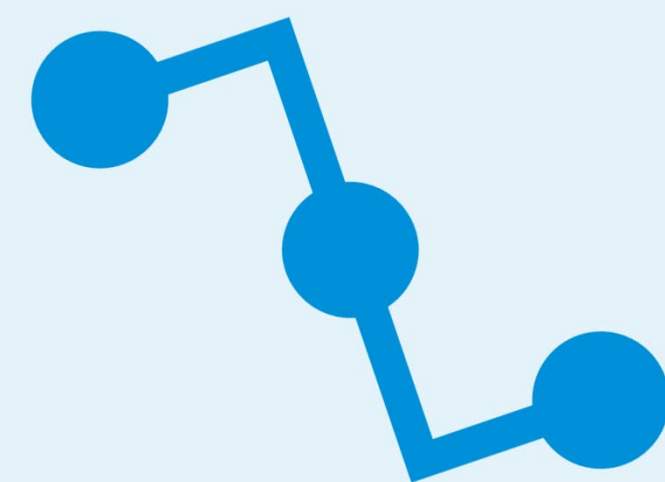
85%



reduction in peak hour congestion when comparing Conceptual Preferred Alternative to the Existing Condition in 2050

## Connectivity:

All Movements Maintained to and from Pitman Avenue



## Traffic Safety:

Improved Acceleration and Deceleration Lanes in weaving areas



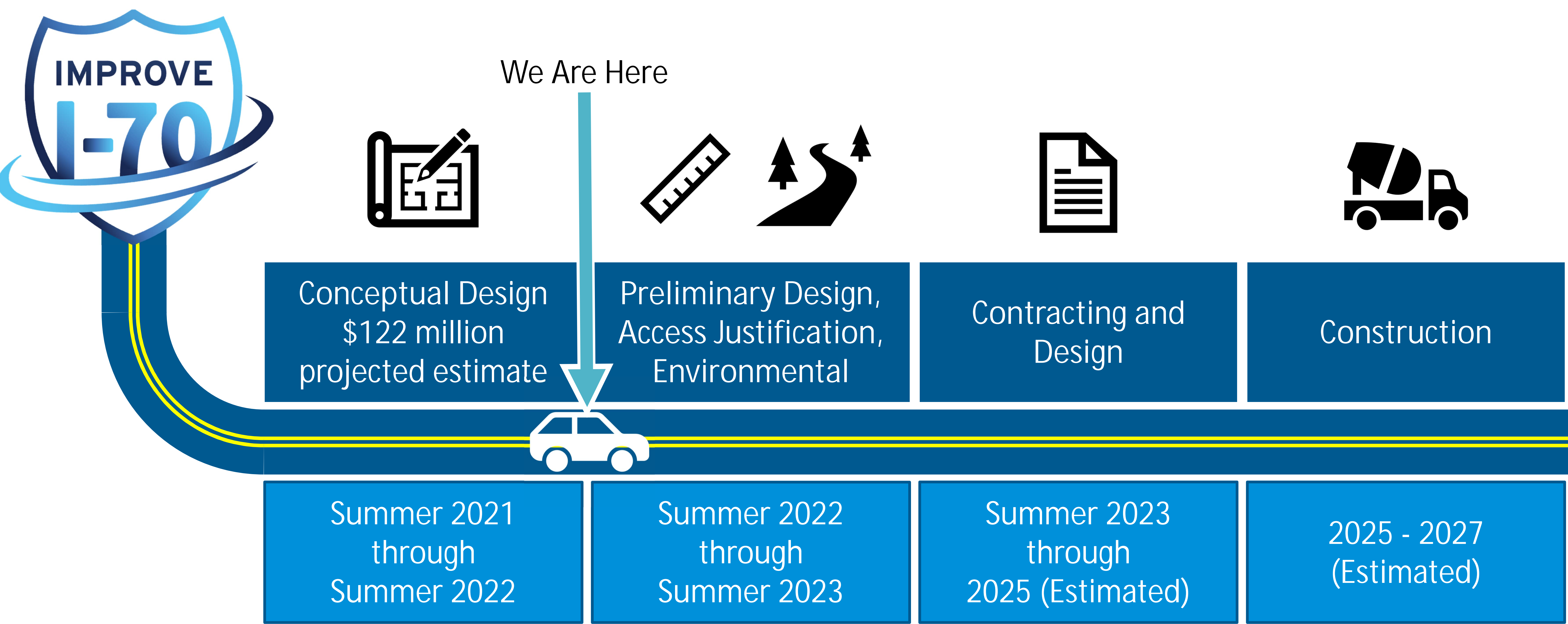
## Traffic Safety:

43%

reduction in crashes when comparing Conceptual Preferred Alternative to the Existing Condition in 2050



# Project Schedule



# Have Your Say

If you have project comments or questions, contact us via one of these methods:

 **ONLINE**



[www.modot.org/i-64i-70route-61-interchange](http://www.modot.org/i-64i-70route-61-interchange)

 **EMAIL OR PHONE**

  
Alvin Nieves-Rosario  
Project Manager  
[Alvin.Nieves-Rosario@modot.mo.gov](mailto:Alvin.Nieves-Rosario@modot.mo.gov)  
(314) 453-1839

  
Andy Tuerck  
St. Charles County Area Engineer  
[Andrew.Tuerck@modot.mo.gov](mailto:Andrew.Tuerck@modot.mo.gov)  
(314) 453-5046

# Thank You For Joining Us

