



MISSOURI Supply Chain Task Force

Meeting #4

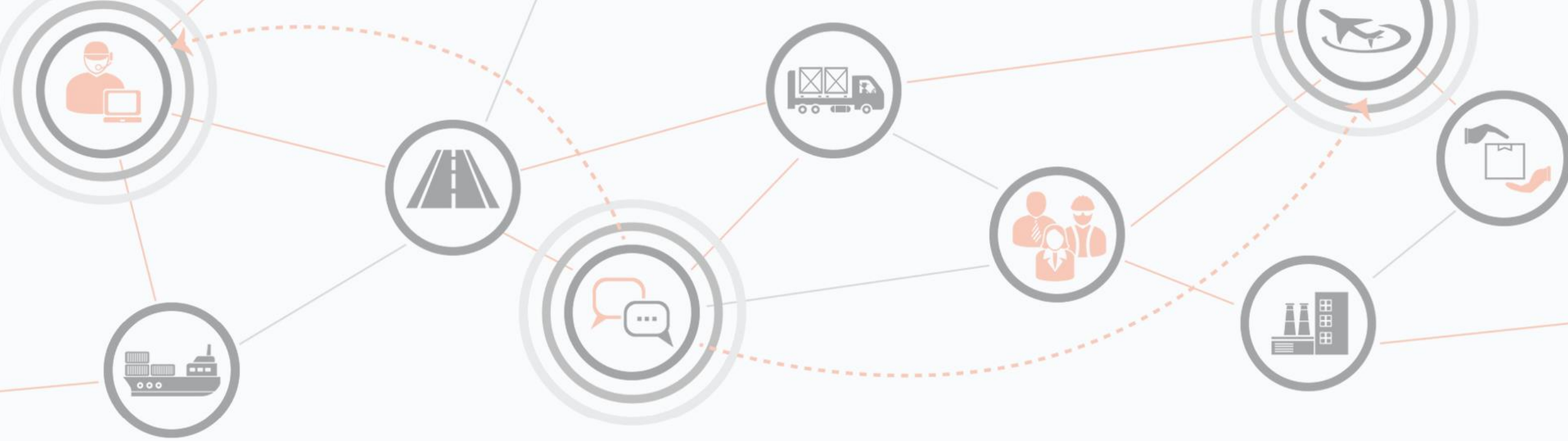
presented to
Missouri Supply Chain Task Force
Members

presented by
SEMO Port
Nestle Purina
Do-It-Best
Global Gateway Logistics
New Madrid County Project

March 24, 2022

Presentation by Mandi Brink with SEMO PORT





Missouri Supply Chain Task Force Meeting

Site Overview - Bloomfield



Strategic Importance

- Only Litter Factory to produce Lightweight
- Supporting about 46% of US Tidy Cat Litter

Physical Plant & Assets

- 1976 initiated operations
- 11.8 acres footprint
- 62,000 Whse Capacity

People & Process

- Staffing:
 - 354 hourly
 - 117 salaried
 - 471 total

Bloomfield – Raw Materials

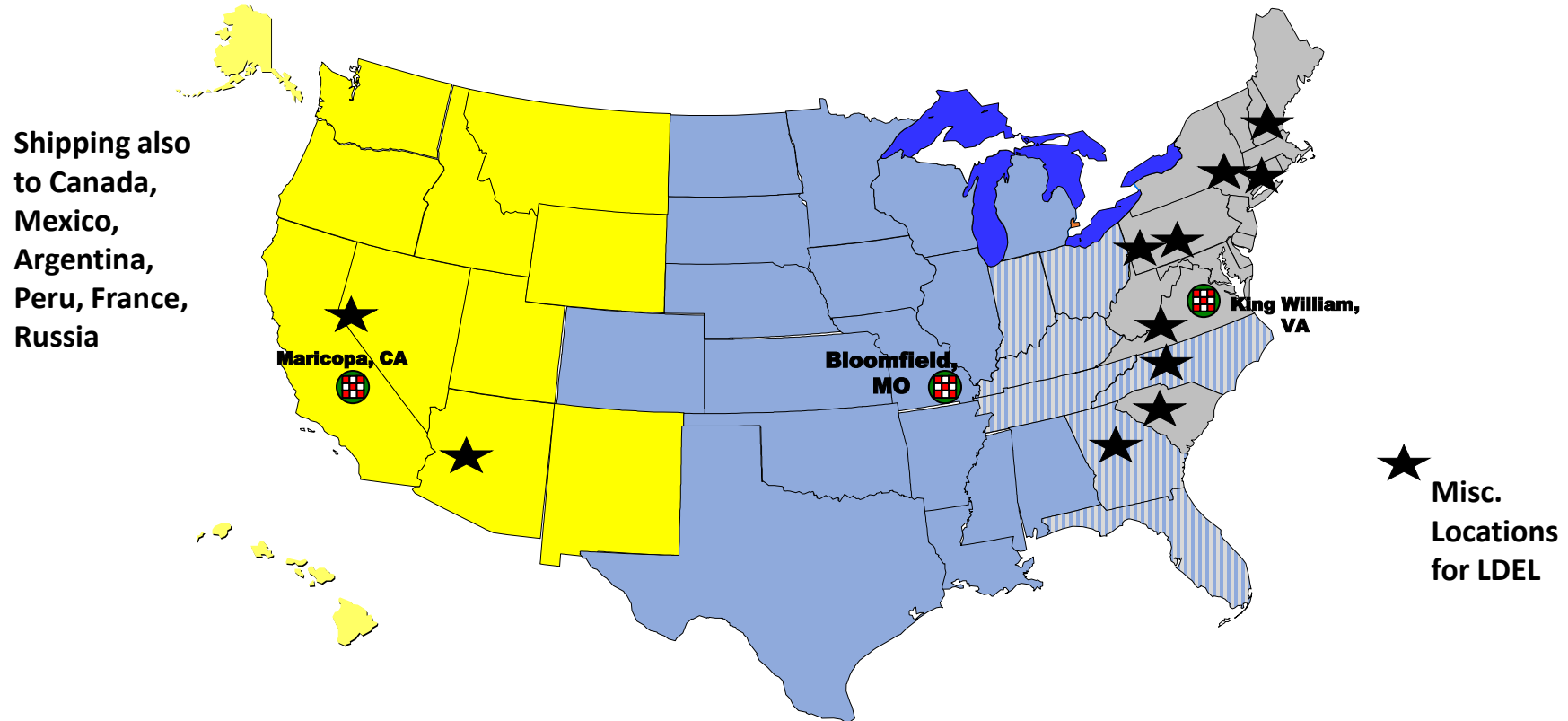
Private Rail Cars:
440

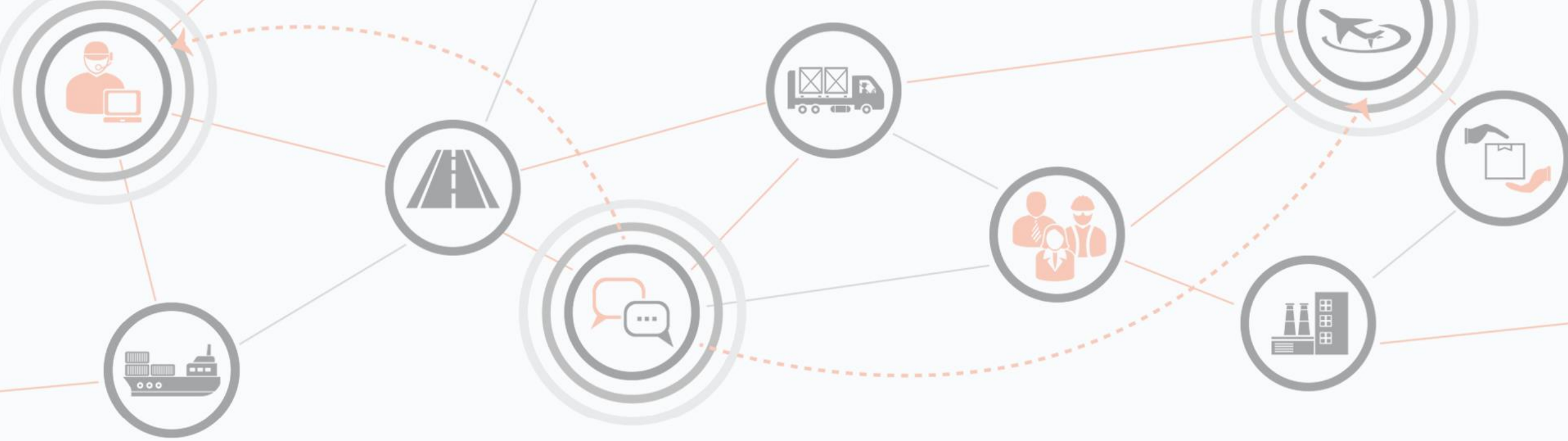
Railcar Storage:
305





Bloomfield – Transportation

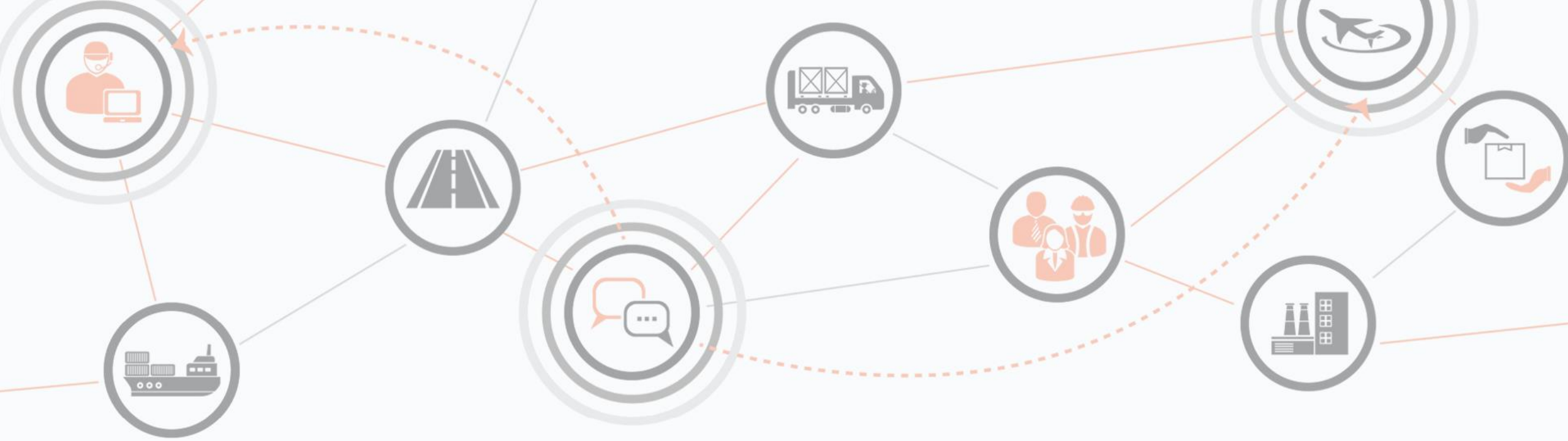




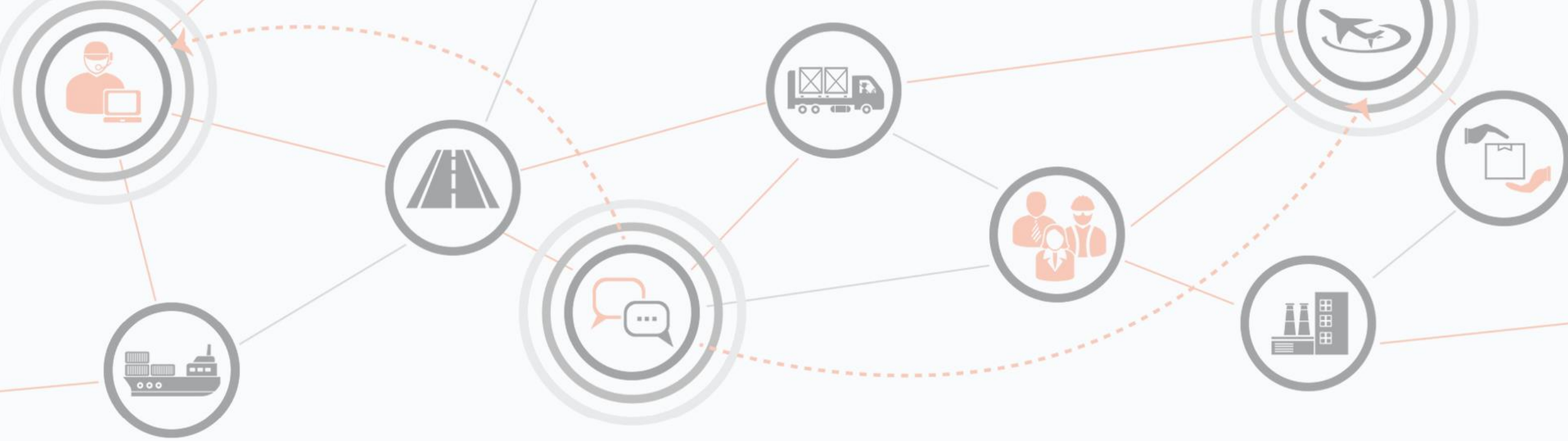
Missouri Supply Chain Task Force Meeting

Presentation by Will Ryan with Do-It-Best





Missouri Supply Chain Task Force Meeting



Missouri Supply Chain Task Force Meeting



NEW MADRID COUNTY PORT AUTHORITY

PRESENTED MARCH 24, 2022

BY

TIMMIE HUNTER

EXECUTIVE DIRECTOR NMCPA

THE PERFECT LOCATION



THRIVING BUSINESS

LOCATION

New Madrid, MO in New Madrid County
Lower Mississippi River Mile 885
175 miles south of St. Louis, MO and 110 miles north of Memphis, TN

TYPICAL COMMODITIES

- Milled rice
- Fertilizers
- Environmentally Safe Nitrogen (ESN)
- Coke
- Corn
- Other agricultural and dry bulk commodities such as cotton seed and rock/gravel

SERVICES

- Barge loading/unloading
- Dry bulk transloading
- Barge fleetng

TOTAL STATE & PRIVATE INVESTMENT AT NEW MADRID PORT (FY14-FY17) \$5.4 Million



FILL, CLEARING, AND OTHER
IMPROVEMENTS ON
PURCHASED PROPERTY

FUTURE INVESTMENT NEEDS



\$8.5M
PHASE I IMPROVEMENTS
& LAND PURCHASES



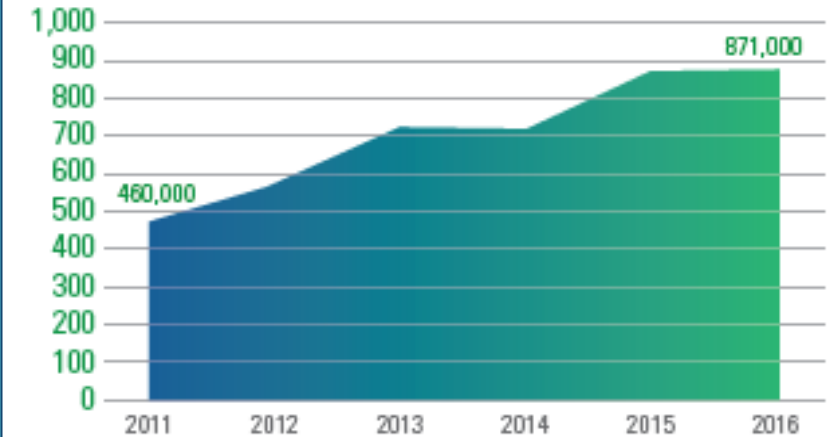
\$170K
ROAD/PLATFORM FOR
CONVEYOR/Crane SYSTEM



\$360K
CONVEYOR/Crane SYSTEM

TOTAL TONNAGE

Tonnage (Thousands)



TOP COMMODITIES



RICE



FERTILIZER



ENVIRONMENTALLY
SAFE NITROGEN (ESN)

ECONOMIC IMPACT OF NEW MADRID PORT



374
Total Jobs
Supported



\$13.5M
Labor
Income



\$103.1M
Output



\$1.3M
State and Local
Tax Revenue

Includes direct, indirect, and induced economic impacts of New Madrid Port operations and capital investment.

CURRENT SOUTH HARBOR



CURRENT SOUTH HARBOR



EXISTING NORTH HARBOR



© 2018 Google

Imagery Date: 8/23/2017

36°32'05.28" N 89°34'45.92" W elev. 298 ft

Google

NORTH HARBOR 1



NORTH HARBOR 2



NORTH
HARBOR 3



NORTH HARBOR 4

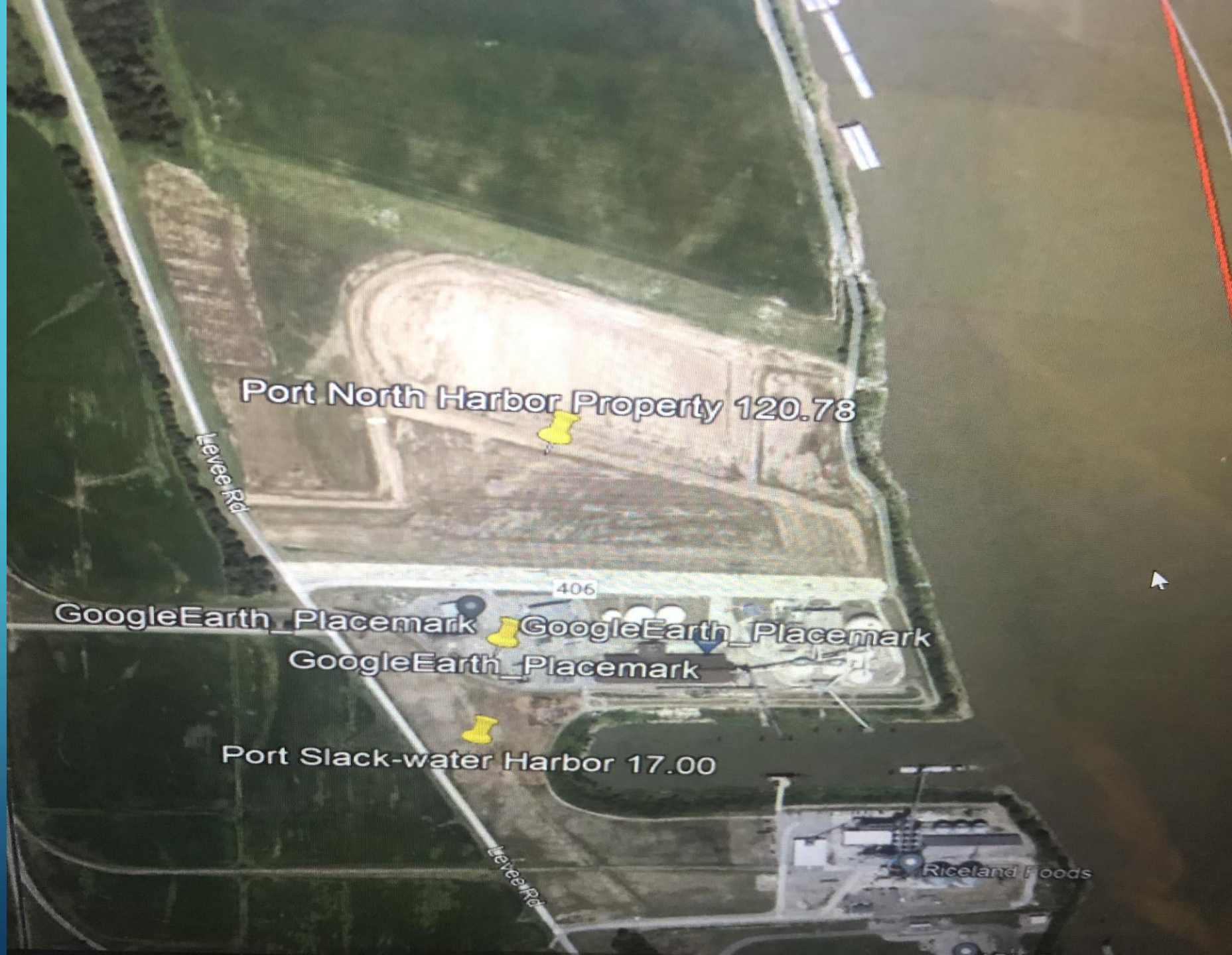


MAGNAVOX

NORTH HARBOR 5



CURRENT NORTH HARBOR



PREPARING NORTH HARBOR FOR CONTAINERS

Project	Amount Requested	Total Request
Initial dredging of the harbor	\$5,500,000	\$27,500,000
Sheet piling on the inside of the north harbor	\$2,000,000	
Concrete levee road to the north property line	\$750,000	
Concrete road along the north property line	\$750,000	
Land acquisition for railroad spur and mainline	\$500,000	
Railroad spur and railroad mainline for the north harbor	\$2,000,000	
Sewer and water extension to the north harbor	\$500,000	
Sanitary sewer lift station for the north harbor	\$500,000	
Electricity expansion for the north harbor	\$500,000	
Mooring dolphins for the north harbor	\$2,000,000	
Loading dock for the north harbor	\$1,000,000	
Container crane for the north harbor	\$5,000,000	
Warehouses for the north harbor	\$1,500,000	
Conveyor system on the north harbor	\$1,200,000	
Truck scales for the north harbor	\$500,000	
Rail- Highway Grade separation into Port	\$2,000,000	
Raise electric utility lines at North Harbor Site	\$1,300,000	

THE PLAN FOR NORTH HARBOR



The background is a solid blue gradient. In the corners, there are white line-art graphics resembling circuit boards or neural networks, with lines and small circles connecting them.

THANK YOU

Timmie Hunter, Executive Director

573.748.2530

nmcopa@sheltonbbs.com

www.newmadridcountypart.com