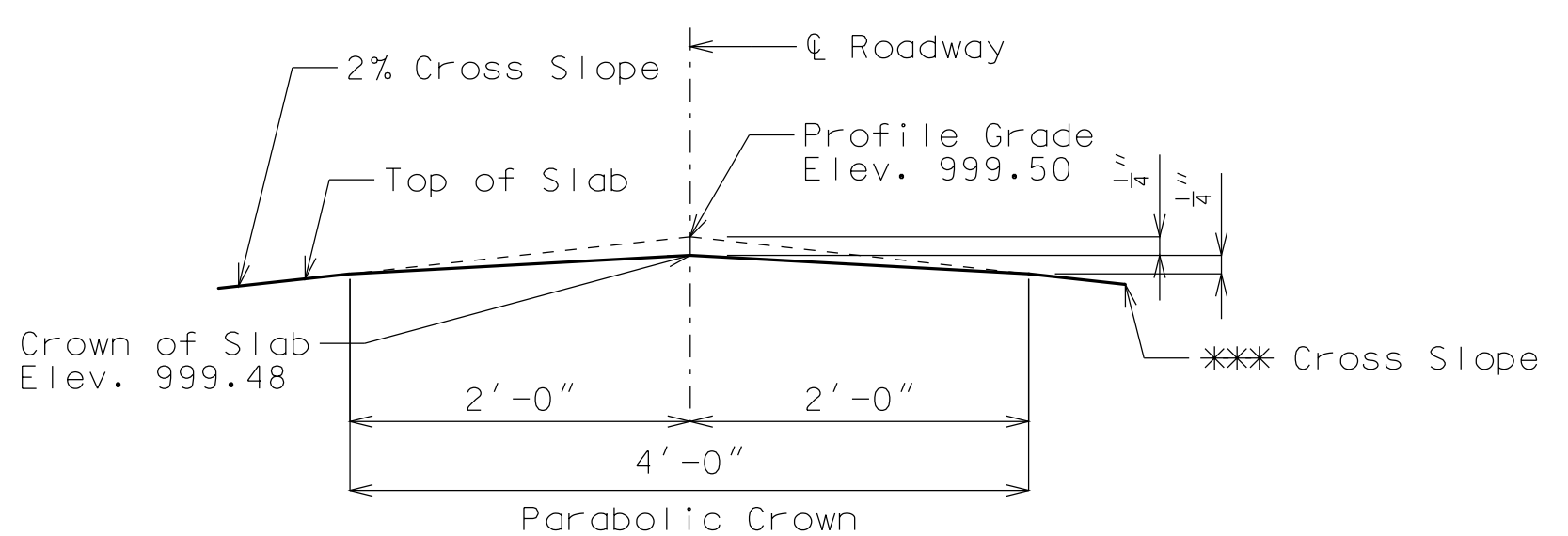
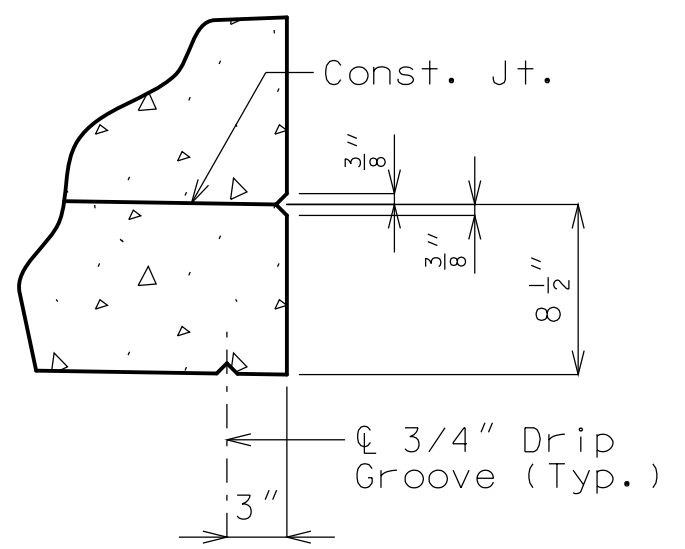


* Alternate bar shape available; see Sheet No. 22.

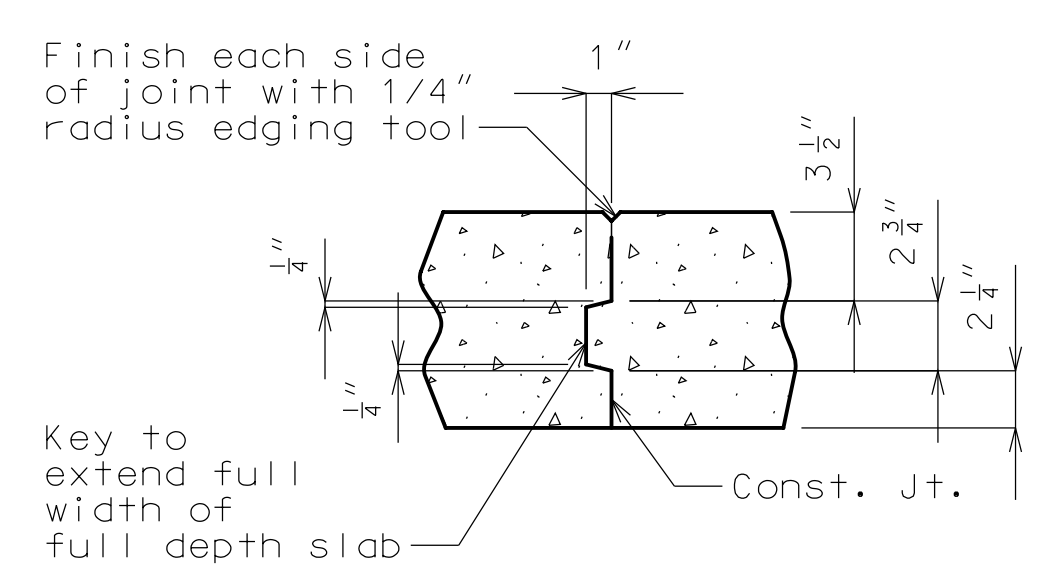
** 3" (#6-S4)
2 3/4" (#8-S2 or S5)



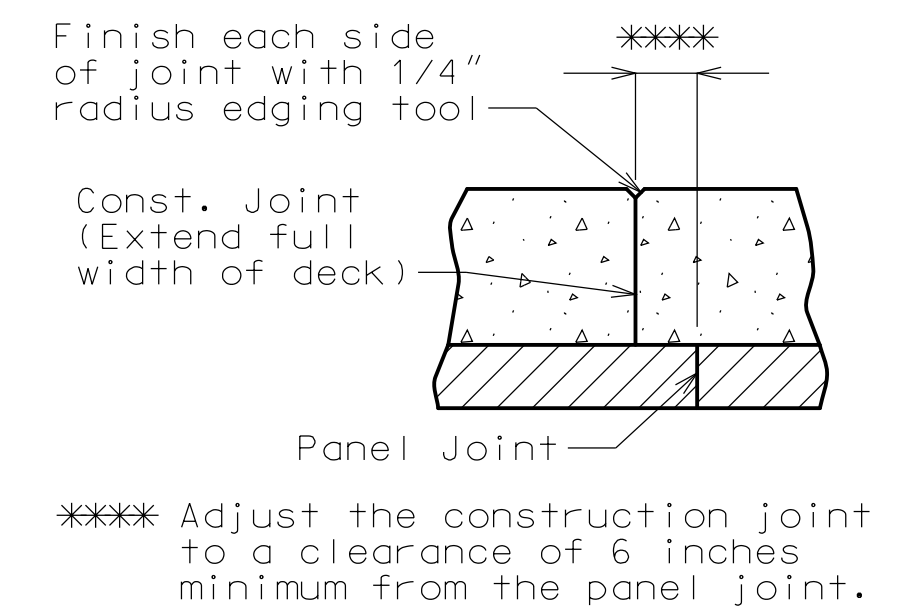
DETAIL A



DETAIL B



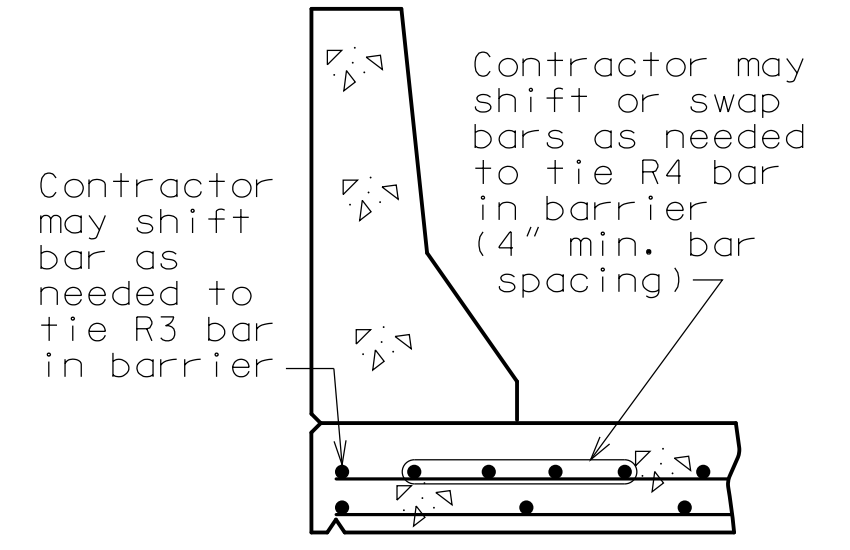
FULL DEPTH SLAB



SLAB ON PANELS

SLAB CONSTRUCTION JOINT

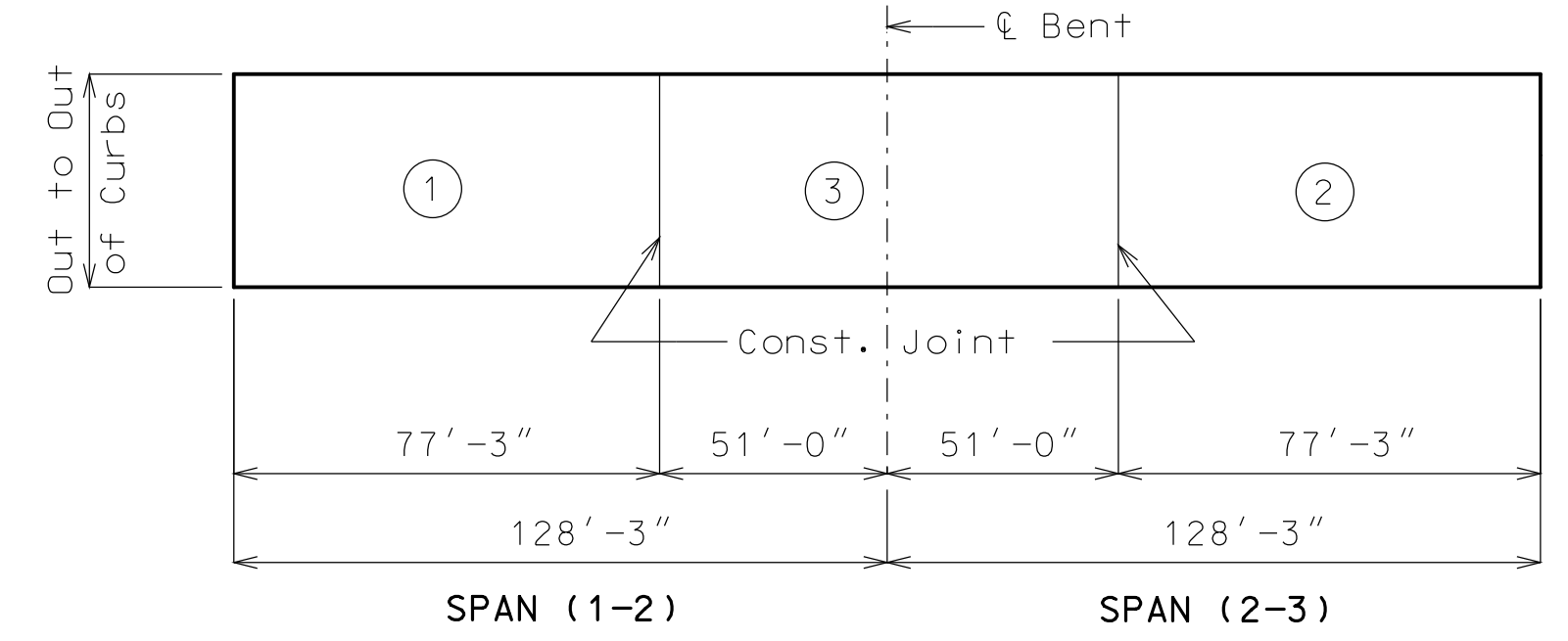
SLAB DETAILS



OPTIONAL SHIFTING TOP BARS AT BARRIER

SLAB TRANSITION		
STATION	CROSS SLOPE	
	LEFT	RIGHT
295+33.29	-2.00%	+2.00%
295+92.77	-2.00%	0.00%
296+52.25	-2.00%	-2.00%

*** The roadway cross slope varies in accordance with the superelevation transition shown in the above table.



	Sequence of Pours			Min. Rate of Pour Cu. Yds./Hr.
	Direction			With Retarder
Basic Sequence	1	2	3	25
	Either Direction			
Alternate pours to the basic skip sequence are subject to the approval of the engineer in accordance with Sec 703.				
Alternate A Pours	1	3 + 2		31
	End to 3	1 to End		
Alternate B Pours	1 + 3 + 2			31
	End to End			

The contractor shall pour and satisfactorily finish the slab pours at the rate given. Retarder, if used, shall be an approved type and retard the set of concrete to 2.5 hours.

SLAB POURING SEQUENCE

Notes:
The contractor shall furnish an approved retarder to retard the set of the concrete to 2.5 hours, and shall pour and satisfactorily finish the slab pours at the rate given.

The concrete diaphragm at the intermediate bents and integral end bents shall be poured a minimum of 30 minutes and a maximum of 2 hours before the slab is poured.

For Details of Prestressed Panels, see Sheet No. 17.

For Plan of Slab Showing Reinforcement, see Sheet No. 20.

For Theoretical Slab Haunching Diagram, Girder Camber Diagram and Theoretical Bottom of Slab Elevations, see Sheet No. 19.

For details and reinforcement of Safety Barrier Curb, see Sheets No. 22 thru 24.

"THIS MEDIA SHOULD NOT BE CONSIDERED A CERTIFIED DOCUMENT."

DATE PREPARED
3/13/2017

ROUTE E	STATE MO
DISTRICT BR	SHEET NO. 21

COUNTY
MCDONALD

JOB NO.
J7S0534

CONTRACT ID.

PROJECT NO.

BRIDGE NO.
A8499

DESCRIPTION	DATE

MISSOURI HIGHWAYS AND TRANSPORTATION COMMISSION

105 WEST CAPITAL
JEFFERSON CITY, MO 65102
1-888-ASK-MODOT (1-888-275-6636)

IF A SEAL IS PRESENT ON THIS SHEET IT HAS BEEN ELECTRONICALLY SEALED AND DATED.