

HOME >> KANSASCITY >> EXCHANGE_6.HTM



June 2010

• [Previous Issues](#) • [Subscribe](#)

In This Issue

- [Around the District](#) • [MoDOT Begins Minor Roads Projects](#) • [MoDOT Announces 5-year Plan](#) • [kcICON Team Member Receives Prestigious Award](#) • [Route 45 Ground-Breaking](#) • [Route 13 Live on the Web](#) • [Opening I-470 and Blue Parkway](#) • [Safe & Sound Sweeps the State](#) • [North Cass Parkway Opens in July](#)

Around the District

Construction projects abound through District 4. It is the busiest construction season District 4 has ever had! Every county has projects in process. Review some of the most [current projects for your county](#) that are under construction.

There is Nothing Minor About Roadwork! MoDOT Begins Minor Roads Project

Ever wonder when Route OO will be resurfaced? Or when Route AA would have new overlay? MoDOT is actually gearing up for an aggressive minor roads project that will improve more than 340 miles of these less-traveled roads, including outer roads, minor roads, and low-volume routes.

With 85 percent of the area's most traveled, major roads in good condition, MoDOT faces the challenge of keeping those roads good and improving minor roads, while funding continues to dwindle.

When we speak to residents, we consistently hear minor roads need attention. Thanks to cost saving efforts across the state, the department is able to allocate the savings to minor roads and provide needed improvements.

"When we speak to residents, we consistently hear minor roads need attention. We have a plan to start doing that," said Beth Wright, MoDOT District Engineer. "One of the biggest areas of concern at our voice in transportation meeting was the condition of minor roads. We listened, and now we are working to improve these roads."



In 2010, MoDOT will be working on minor routes. The minor roads project will cost more than \$15 million and will be used for some of the most rural areas of the Kansas City district. The first minor roads project actually kicked off on MO 23 near Concordia in May, but every county will benefit from this project. The total 340 miles will be divided by:

- Cass County, 23 miles
- Clay County, 29 miles
- Henry County, 59 miles
- Jackson County, 30 miles
- Johnson County, 66 miles
- Lafayette County, 53 miles
- Platte County, 39 miles
- Ray County, 48 miles

Check out the [Minor Roads Online Meeting](#) at www.modot.org/kc for all the details, including schedules by county.

MoDOT Announces Plan to Put More Funds on the Road

Stagnant state revenues, uncertain federal funding and the completion of Amendment 3 projects has resulted in a dramatic decrease in highway and bridge construction. The [Statewide Transportation Improvement Plan \(STIP\)](#) focuses on maintaining good roadways.

To cope with this funding challenge, MoDOT will make some shifts in priority. For example, we will keep major highways in good condition, improve smaller state roads and repair bridges. In the Kansas City District, funding went from \$139

million for construction in 2011 to about \$59 million in 2015.

"Far fewer major projects will begin in the next five years in the Kansas City District," said District Engineer Beth Wright. "Only those to which we've already committed can move forward."

In Kansas City, there are several projects that are likely to be under way in the next five years, some of which include:

- In Warrensburg, we will complete the East Loop of Route 13 from Route 50 north to Routes V/OO (start 2013)
- We will construct new interchange on [Route 150 at Botts Road](#) in south Kansas (start late 2010)
- Pavement improvements are planned for I-70 from Route 7 to Lafayette County line (start spring 2012) and from I-670 to I-435 (start 2012)
- Rehabilitate or replace 9 bridges on I-70 between Route 40 and Sterling Avenue (start spring 2012)
- The conventional diamond interchange at [I-435 and Front Street](#) has been redesigned and will be reconstructed as a Diverging Diamond Interchange (start after [kclCON project](#) is complete.)



You can review the complete STIP with a list of projects for our area on our website at www.modot.org/kc under "Quick Links."

kclCON Project Team Member Receives 2010 Rosa Parks Award

kclCON Project team member Jontell Jones was bestowed the 2010 Rosa Parks Award at the Metro Organization for Racial and Economic Equity's (MORE2) fifth annual Imagine Banquet held June 10, 2010 at the Hyatt Regency Crown Center.

MORE2's Rosa Parks Award is given to individuals or companies who exemplify the courage to stay the course and change the inequity in the metro area.

Just over two years ago, Jones, 28, with two children, was working construction jobs that paid cash and provided no benefits. Jones was then hired by Paseo Corridor Constructors to participate in the On-the-Job Trainee Program offered through the Missouri Department of Transportation's (MoDOT) kclCON Project.

MoDOT provides up to \$1.25 million for kclCON Project workforce training. This training is designed to create opportunities that will grow a more diverse workforce in the Kansas City region and to increase the number of minority, female and economically disadvantaged individuals working across the state of Missouri. There are currently 35 On-the-Job Trainees employed on the kclCON Project. Jones is one of 14 individuals to date who have graduated from the program.



Jones, now a Quality Assurance Technician, has completed over 2,000 hours of training in heavy highway construction. During his acceptance speech, Jones said, "It feels good to go from having a job to having a career."

Jones thanked MORE2, MoDOT and the supervisors and co-workers at Paseo Corridor Constructors who have guided him through the training process. "I am grateful for the support I have received on the project, and grateful to be able to represent others, like myself, in the community who can excel if given the chance."

The \$245 million kclCON project will reconstruct/rehabilitate 4.7 miles of Interstate 29/35 from just north of Route 210/Armour Road in North Kansas City into the northeast corner of the downtown Kansas City, Mo. freeway loop. The project includes improving outdated interchanges and the construction of the Christopher S. Bond Bridge – a new landmark, cable-stay Missouri River Bridge.

Additional information is available on the project's Web site: www.kclcon.com or on Facebook "[kclCON Project](#)."

Route 45: Where the Shovel Meets the Road

Route 45 improvements faced some challenges that pushed back the start of construction, but on June 17 with the shovel hits the dirt, the project is officially underway.

A critical east/west route in the area, Route 45 hosts as many as 18,000 cars a day. Experts estimate that this high-traffic route could have as many as 53,000 drivers by 2030 – almost triple the amount!

Making this corridor safer for drivers is an important issue at MoDOT. The department will add a lane in each direction, giving vehicles the option to go around stalled vehicles with no chance for a head on collision with opposing traffic. The design for the new roadway is also safer than the existing road.

The widening project is one of several projects along the corridor that can impact the same drivers:

- Two roundabouts are under construction at Brink-Meyer Road and Union



Chapel Road. Brink-Meyer Road will be closed through August to complete construction.

- Road resurfacing from I-435 to Route K is part of maintaining the existing roadway. The anticipated start date is June.
- Three bridges along Route 45 will be closed for repair or replacement as part of the Safe & Sound Bridge Improvement Project.
- MO 45 at Mission Creek, construction began mid-May. Bridge closed 45 days.
- MO 45 near Dry Lake Road, construction began mid-May. Bridge closed 36 days.
- MO 45 at Short Creek, construction begins mid-July. Bridge closed 36 days.
-

Keep tabs on this project online on the [Route 45 Corridor project page](#) on our website or on [MoDot Kansas City](#) on facebook.

From Dirt to Drivers: Watch the Route 13 "East Loop" Project As It Unfolds

It is rare to see a road built from scratch but that's exactly what residents near Warrensburg can see thanks to a birds-eye web cam. Two cameras are poised to snap continuous pictures of the project for the next few months.

The Route 13 "East Loop" is a two-lane roadway that will pull through traffic from the congested town center to a new, smooth drive around the city center.

The cameras were added to show local residents how the project is progressing. Because it is a new road, effectively away from main traffic corridors, very few residents can see the construction.

This \$17.6 million project works in concert with the Route 13 "Gap" project, which has a similar agenda to send traffic to the east of the City of Lexington, separating through and local traffic.

You can follow the progress of this important [project on our website](#) or on the [MoDOT Kansas City Facebook page](#).



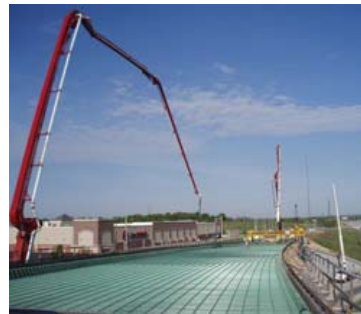
Stretch, Snip, Open: Ribbon Cutting, Parade Celebrate Opening I-470 and Blue Parkway

A \$27 million project that began in 2007 is wrapping up, on budget and on schedule. The half-diamond interchange at the intersections of I-470, Blue Parkway and U.S. 350 will complete the final step with a flourish with a special ribbon-cutting designed for a project of this size and importance to the local community.

MoDOT staff, state and local officials and local citizens are invited a ceremonial "first pass" over the connector ramps linking Pryor Road to Blue Parkway on June 23 at 10 a.m.

The ceremony will open the road and officials will christen the new pavement with a short ride in cars from local automobile dealers. Local residents are invited to gather in the J.C. Penny's parking lot of the Summit Fair shopping center.

The interchange at I-470 and Blue Parkway was open last August. The connectors officially complete this project which was designed to improve traffic operations at the junction of I-470 and Routes US 50/MO 350. The connector roads spanning US 50 and MO 350 join the two half-diamond interchanges at Pryor Road and Blue Parkway on both sides of I-470, creating what is commonly referred to as a 'Split-Diamond' Interchange.



For more information, review the project details on www.modot.org/kc

Safe & sound Sweeping the State, Replacing Bridges Quickly and Efficiently

As the Safe & Sound Bridge Improvement Program enters the second year of the five-year project, more residents will see the signs in District 4. In 2010, 47 bridges will be completed in our district, many in the northern half, including Platte, Clay and Lafayette counties.

This program uses a delicate dance of construction and timing to stage each bridge to be completed quickly, efficiently and cost effectively. The schedule moves through county by county to make the best use of materials and manpower by taking care of bridges close together.

Because of the tight scheduling, many Safe & Sound projects will actually be under construction simultaneously with other large projects. A prime example is the Route 45 Corridor.

While Route 45 crews are expanding this roadway, Safe & Sound crews are already working on two bridges and a third begins in July:

- MO 45 at Mission Creek: Construction begins mid-May, 2010. Bridge closed 45 days.
- MO 45 near Dry Lake Road: Construction begins mid-May, 2010. Bridge closed 36 days.
- MO 45 at Short Creek: Construction begins mid-July, 2010. Bridge closed 36 days



In order to meet deadlines, the Safe & Sound program uses an aggressive construction schedule. Most often, the bridges are completely closed for at least 30 days while the old bridge is completely repaired or replaced. Closing the bridge allows the contractor to move quickly to finish all work, then reopen and move to the next bridge.

In fact, this plan of attack has allowed the contractor to finish ahead of schedule in some cases. In the past year, several bridges have opened a week or more ahead of schedule, including Route KK at Owens Bridge, MO 92 at Williams Creek, Route B Bridge over Knob Creek and the Route O Bridge over Poney Creek.

Review a [county-by-county list](#) of all projects for individual project time lines.

July Opening for Much-Anticipated North Cass Parkway

Belton and Raymore residents will rejoice when another piece of the Route 71 corridor project opens. The North Cass Parkway interchange is on target to open in late July.

A project that began less than two years ago, the first part of the project included a new intersection at 163rd street which opened last year, ahead of schedule. A widened Route 150 is the final piece in the improvements for this area.

The North Cass Parkway interchange, located on Route 71 two miles south of Route 58, will provide Belton, Raymore, Peculiar and much of northern Cass County much needed access relief.



The new interchange cost \$10.1 million and is a cooperative project involving the cities of Belton and Raymore, Cass County and the Missouri Department of Transportation.

[Watch a video of Materials and Construction Engineer Perry Allen discussing](#) areas of the projects along the 71 Corridor on MoDOT's youtube channel. Or review the project information on www.modot.org/kc