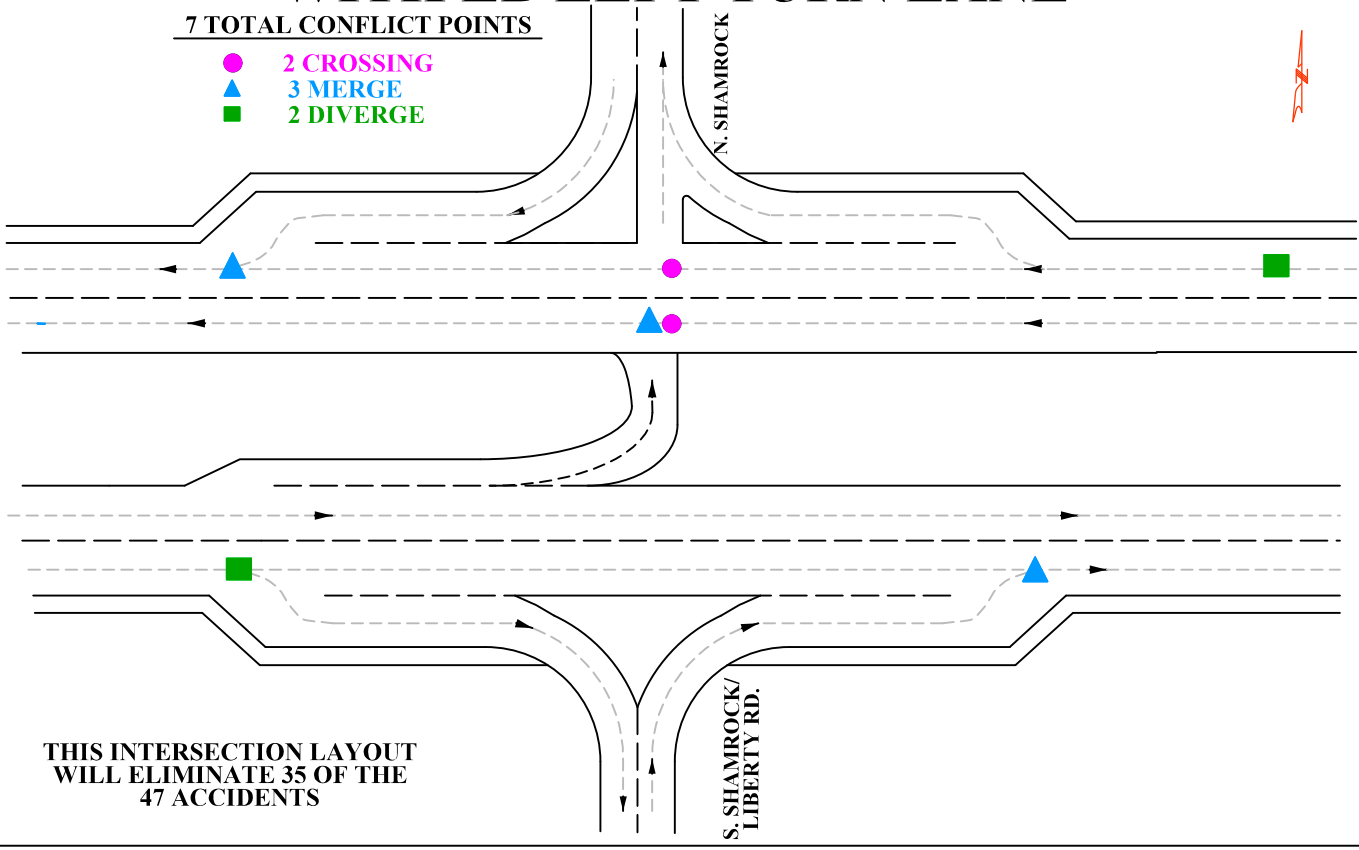


RIGHT IN/RIGHT OUT ON SIDE ROADS WITH EB LEFT TURN LANE

7 TOTAL CONFLICT POINTS

- 2 CROSSING
- ▲ 3 MERGE
- 2 DIVERGE



THIS INTERSECTION LAYOUT
WILL ELIMINATE 35 OF THE
47 ACCIDENTS

S. SHAMROCK/
LIBERTY RD.

NOT TO SCALE

INTERSECTION COLLISION DIAGRAM

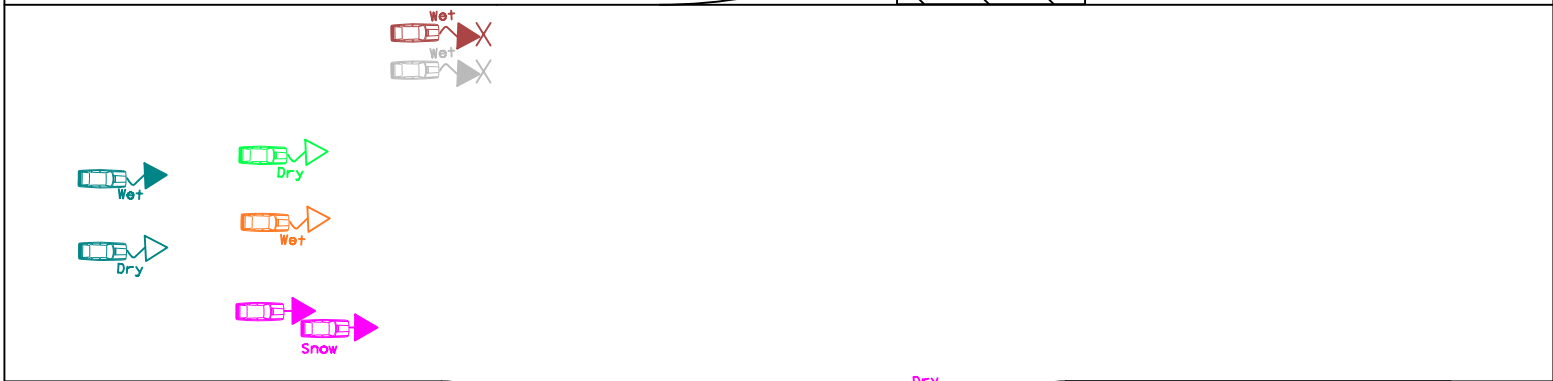
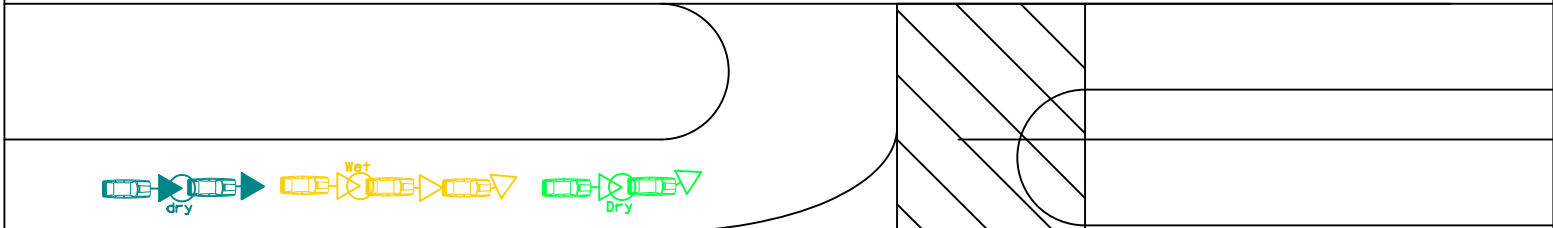
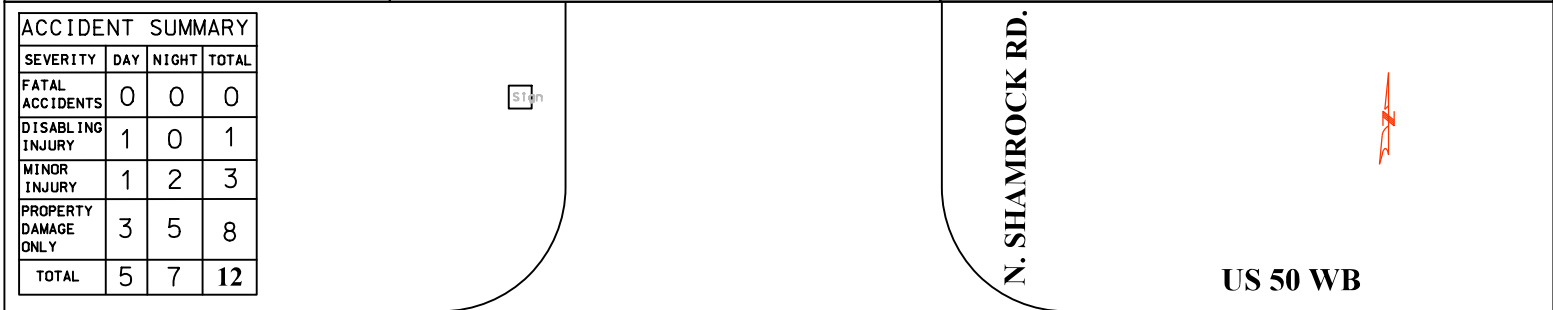
INTERSECTION: U.S. 50/63 AND S. SHAMROCK RD./LIBERTY RD. AND N. SHAMROCK RD.

COUNTY: COLE

TIME PERIOD COVERED: FROM 1/1/2006 TO 12/31/2015 (10 YEARS)

SYMBOLS	SYMBOLS	SYMBOLS
○ = MINOR INJURY	◀ = DIRECTION OF VEHICLE	= TRACTOR TRAILER
⊕ = DISABLING INJURY	◀ = NIGHTTIME ACCIDENT	= CAR
● = FATAL ACCIDENT	◀>>>> = BACKING VEHICLE	X = OBJECT
	⚡ = OUT OF CONTROL	= MOTORCYCLE

ACCIDENT SUMMARY			
SEVERITY	DAY	NIGHT	TOTAL
FATAL ACCIDENTS	0	0	0
DISABLING INJURY	1	0	1
MINOR INJURY	1	2	3
PROPERTY DAMAGE ONLY	3	5	8
TOTAL	5	7	12



US 50 EB

2006	2010	2014
2007	2011	2015
2008	2012	
2009	2013	

S. SHAMROCK/
LIBERTY RD.