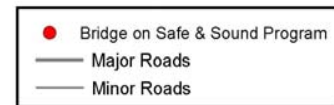
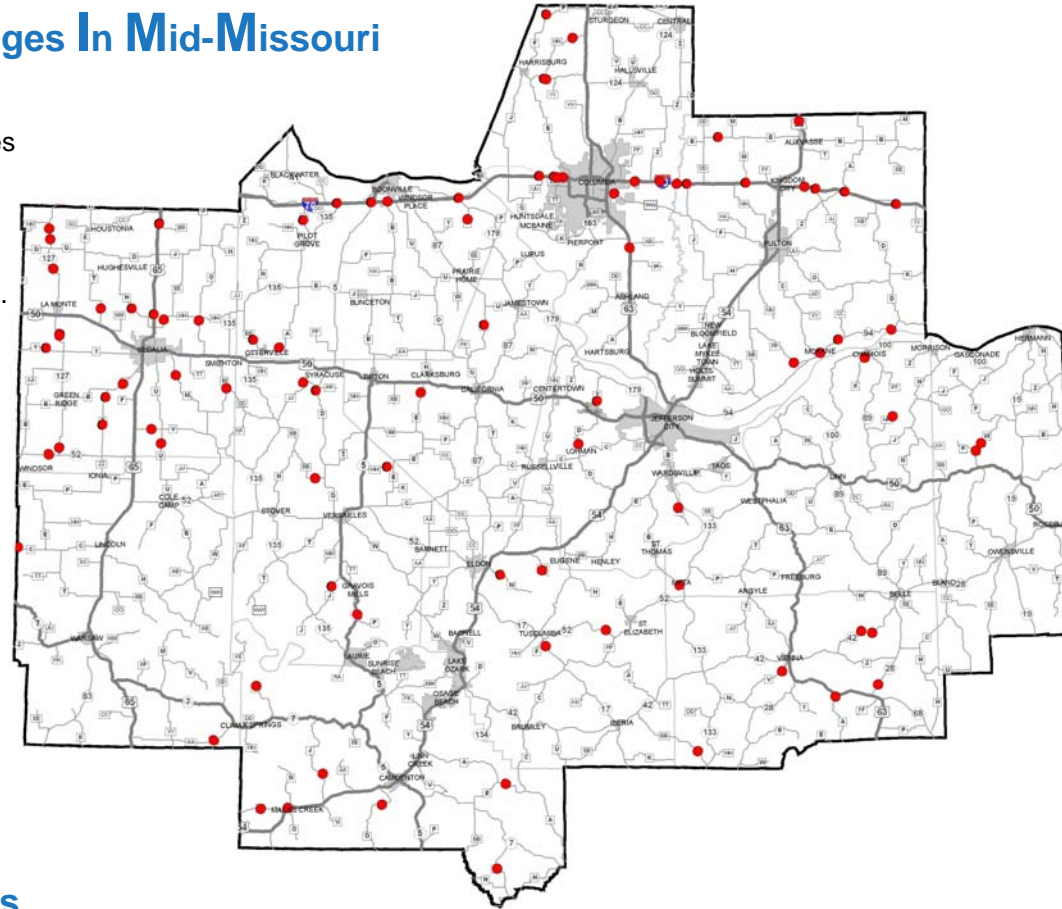


Safe & Sound Bridges In Mid-Missouri

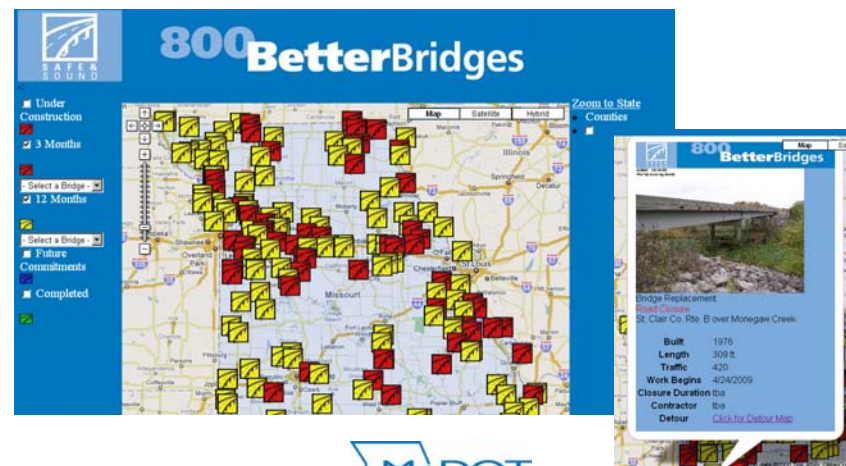
The following shows the location of mid-Missouri bridges included in the Safe & Sound program.

For details, log onto www.modot.org/safeandsound.



Construction Status

Log onto www.modot.org/safeandsound to learn more about the Safe & Sound program. An interactive map showing the status of bridge improvements is available online. To talk with a member of our staff, call 1-888-ASK-MoDOT (275-6636).



Missouri Department of Transportation/Central District
1511 Missouri Blvd., P.O. Box 718
Jefferson City, MO 65102
1-888-ASK-MoDOT (275-6636), www.modot.org



800 BetterBridges

Community Briefing

MoDOT's Sedalia Maintenance Facility
March 3, 2009
4:30 - 6:30 p.m.

Frequently Asked Questions

1. What is the Safe & Sound Bridge Improvement Program?

Safe & Sound is an innovative program developed to replace or rehabilitate more than 800 of MoDOT's most worn-out bridges in five years. At least 100 of these bridges are to be under construction in early 2009. MoDOT will sell bonds to pay for the project, with annual payments of approximately \$50 million. MoDOT will use roughly one-third of the federal bridge replacement funds it receives each year to make those payments. The Safe & Sound program requires no additional funding.

2. How many bridges are included in the Safe & Sound program in the central Missouri area?

Ninety bridges in the central Missouri area are included in the program and scheduled for improvement within the next five years. The following bridges are being featured at tonight's meeting and are among some of the first bridges to be addressed:

Pettis County

- Route Y, Muddy Creek Bridge (two miles west of Route 127)
- Route H, Muddy Creek Bridge (four miles west of Route 65)
- Route E, Flat Creek Bridge (3.5 miles south of Route B)
- Route E, Basin Fork Creek Bridge (one mile south of Route B)

Benton County

- Route C, Brush Creek Bridge (10 miles west of Route 65)

The cost for improvements to the Pettis County bridges listed is approximately \$1.5 million. Improvements to the Benton County bridge costs approximately \$535,000.

3. What type of improvements are planned for the bridges featured at tonight's meeting?

The bridge deck on each of these bridges will be replaced and work will be completed within the existing right of way.

4. How will traffic be handled during construction?

To speed construction and save money, the bridges will be closed to traffic during construction. Motorists will be detoured around the work area. Work is planned during the spring, summer and fall seasons in 2009. Each bridge is expected to remain closed for 35 to 45 days. The bridges on Route E in Pettis County will not be closed at the same time. Please refer to the inside of this handout for details.

5. Who do I contact for more information?

The public is always encouraged to contact MoDOT toll free at 1-888-ASK-MoDOT (275-6636) with their questions and comments. Information about Safe & Sound and a complete listing of bridges included in the program can be found on our Web site at www.modot.org/safeandsound.

800 BetterBridges

Signs Of Improvement!

Safe & Sound signs are posted on all bridges included in the program to notify the public of bridges scheduled for improvement.

Thirty days prior to the start of construction, signs displaying a brief description of the work as well as the completion season and year will be installed.



The following bridges are being featured at tonight's meeting:

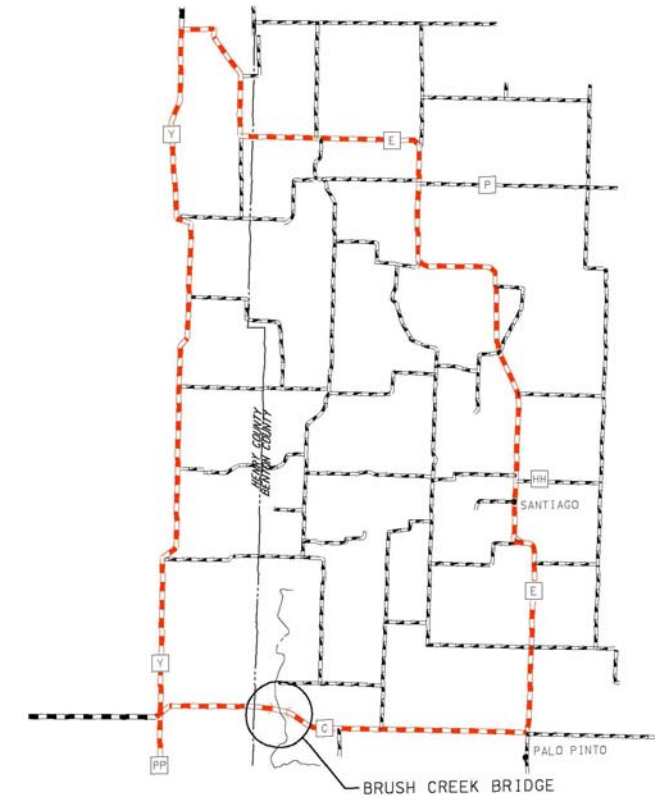
Benton County

- Route C, Brush Creek Bridge

Pettis County

- Route Y, Muddy Creek Bridge
- Route H, Muddy Creek Bridge
- Route E, Flat Creek Bridge
- Route E, Basin Fork Creek Bridge

BENTON COUNTY ROUTE C, BRUSH CREEK BRIDGE



DETOUR ROUTE - - -

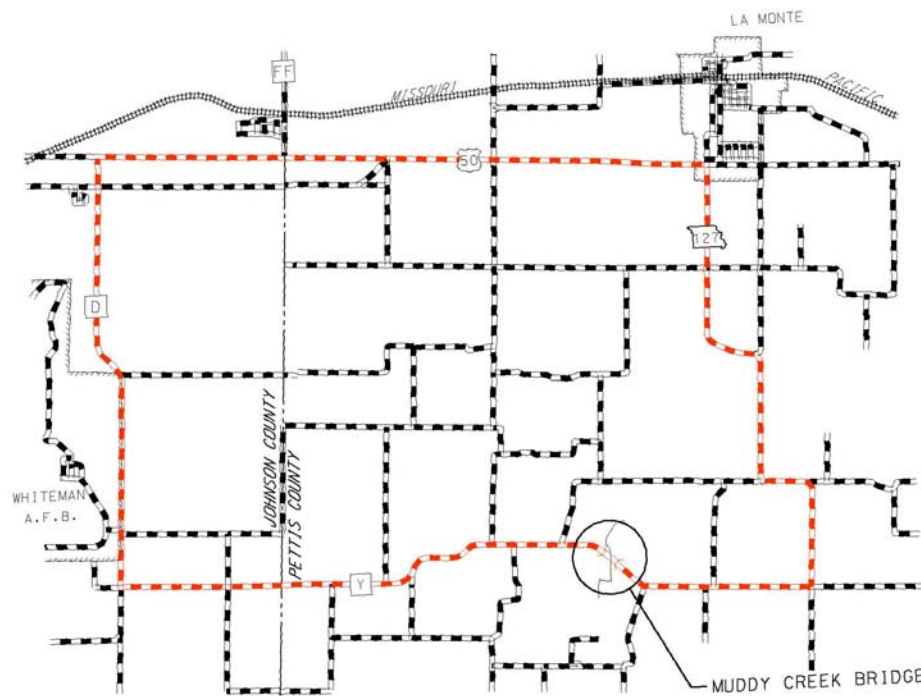
ROUTE C, BRUSH CREEK BRIDGE DETOUR ROUTE - TRAFFIC WILL BE DETOURED AROUND THE WORK AREA ON ROUTES C, Y AND E.

PETTIS COUNTY ROUTE Y, MUDDY CREEK BRIDGE



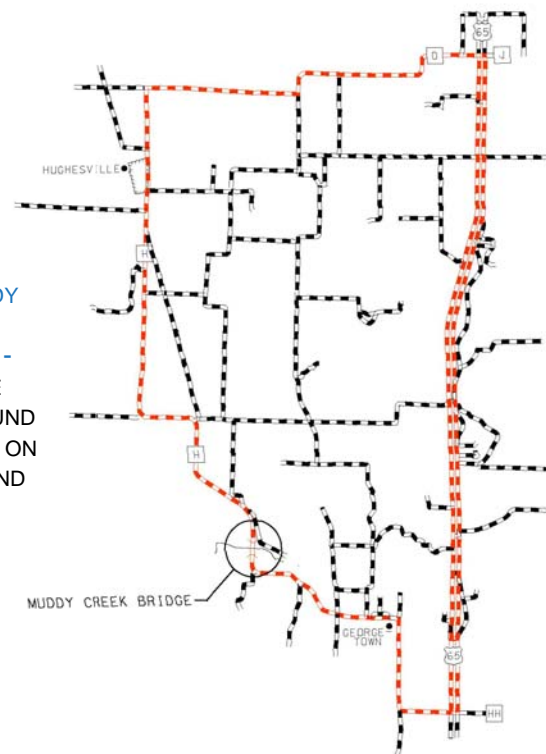
DETOUR ROUTE - - -

ROUTE Y, MUDDY CREEK BRIDGE DETOUR ROUTE - TRAFFIC WILL BE DETOURED AROUND THE WORK AREA ON ROUTES Y, D, 50 AND 127.



ROUTE H, MUDDY CREEK BRIDGE

ROUTE H, MUDDY CREEK BRIDGE DETOUR ROUTE - TRAFFIC WILL BE DETOURED AROUND THE WORK AREA ON ROUTES H, D AND 65.



ROUTE E, FLAT CREEK AND BASIN BRIDGES

ROUTE E, FLAT CREEK AND BASIN BRIDGES DETOUR ROUTE - TRAFFIC WILL BE DETOURED AROUND THE WORK AREA ON ROUTES E, 52, 127 AND B.

