

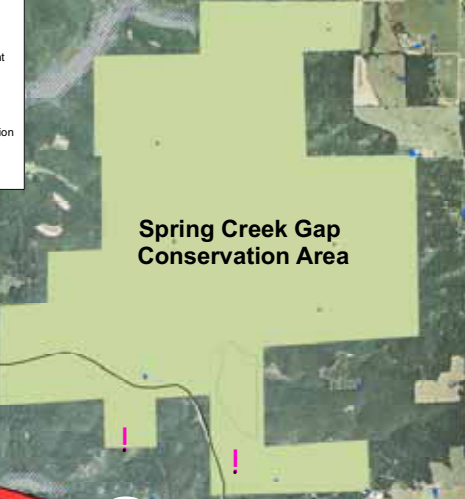
Stretch of US 63 from City Limits of Vienna to the Vichy Area



Vienna

Legend

- Cemetery
- Historic Place (NHRP)
- Sensitive Biological Species
- Public Water System Wells
- Sensitive Environmental Constraint
- Sensitive Streams
- Potential Wetlands
- Missouri Department of Conservation
- City Limits
- 100 year Floodplain



Spring Creek Gap Conservation Area

COUNTY RD 329

COUNTY ROAD 325

COUNTY RD 514

COUNTY RD 339

COUNTY RD 519

28

28

Y

A

FF

1

