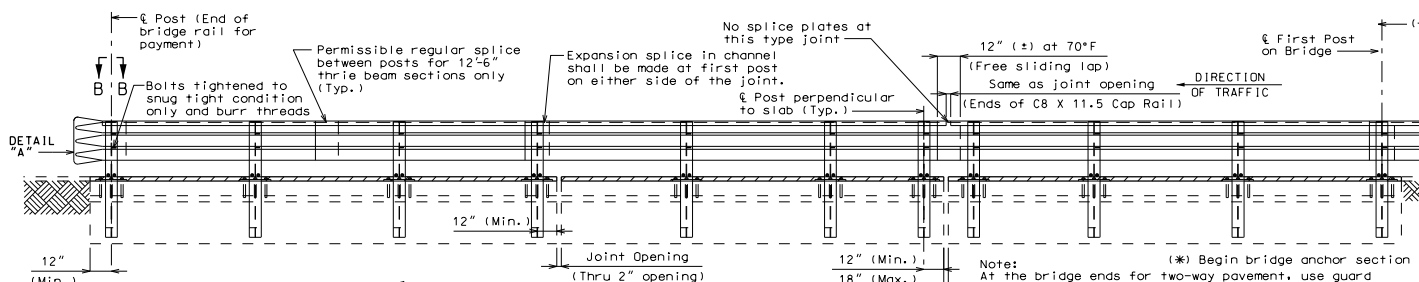
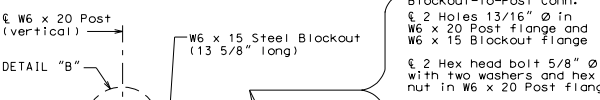


SEC/SUR \* TWP \* RGE \*



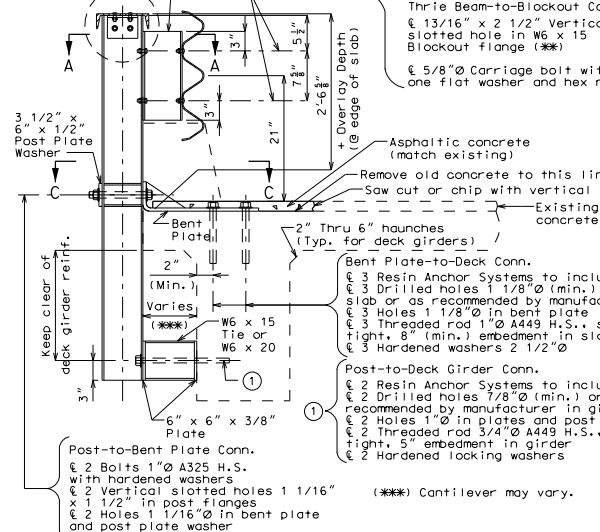
**GENERAL NOTES:**  
 Design Specifications: AASHTO - 1996 and Interims thru 1999.  
 Panel lengths of channel members shall be attached continuously to a minimum of four posts and a maximum of six posts (except at end bents).  
 All bolts, nuts, washers and plates are considered as parts of the three beam rail for payment.  
 All steel connecting bolts and fasteners for posts and railing and all anchor bolts, nuts, washers, and plates shall be galvanized after fabrication. For protective coating and material requirement of steel railing, see Section 1040 of the Missouri Standard Specifications.  
 Rail posts shall be set perpendicular to roadway profile grade and vertically in cross section, and aligned according to Section 713 of the Missouri Standard Specifications, except that the rail posts shall be aligned by the use of shims so that in the final adjustment no post shall deviate more than one inch from true horizontal alignment. The shims shall be 3" x 1 3/4" and placed between the blockout and the three beam rail. The thickness of the shims shall be determined by the contractor and verified by the engineer before ordering material for this work.  
 At the expansion joints in the three beam rails and channels, tighten bolts, back off one-half turn and burr threads.  
 At the three beam connection to blockout on wings, tighten bolts, back off one-half turn and burr threads.  
 Minimum length of three beam sections is equal to one post space.  
 Use 5/8" Ø button-head, oval shoulder bolts with hex nuts at all slots (thickness of hex nuts = 3/8" min.).  
 Thrie beam guard rail on the bridge shall be made of steel and shall be 12 gage.  
 Posts, cap rail angles, channels and channel splice plates shall be fabricated from ASTM A709 Grade 36 steel and galvanized.  
 Washers shall be used at all post bolts (between the bolt head and beam). They shall be rectangular in shape (3" x 1 3/4" x 3/16" min.) and flat with a 1/16" x 1" slot, or when necessary of such design as to fit the contour of the beam (use a 3" x 1 3/4" x 5/8" rectangular washer between the blockout and the thrie beam rail).  
 Special drilling of the thrie beam may be required at the splices. (All drilling details are to be shown on the shop drawings.)  
 Fabrication of structural steel shall be in accordance with Section 712 of the Missouri Standard Specifications.  
 Expansion splices in the thrie beam rail shall be made at either the first or second post on either side of the joint and on structure at bridge ends. When the splice is made at the second post, an expansion slot shall be provided in the thrie beam rail for connection to the first post to allow for movement.  
 In addition to the expansion provisions at these expansion joints, expansion splices in the thrie beam rail and the channel shall be provided at other locations so that the maximum length without expansion provisions does not exceed 200'.  
 Contractor shall verify all dimensions in field before ordering material.  
 Shim plates 6" x 6" x 1/16" may be used between the top of the post and the channel member as required for vertical alignment.  
 See Missouri Standard Plans drawing 606-00 for details not shown. See slab sheet for rail post spacing.

"THIS MEDIA SHOULD NOT BE CONSIDERED A CERTIFIED DOCUMENT."  
 DATE PREPARED: 11/16/2011  
 ROUTE: \* STATE: MO  
 DISTRICT: BR SHEET NO. \*  
 COUNTY: \*  
 JOB NO. \*  
 CONTRACT ID. \*  
 PROJECT NO. \*  
 BRIDGE NO. TBH054

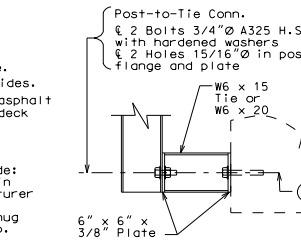


PART ELEVATION SHOWING THRIE BEAM RAIL

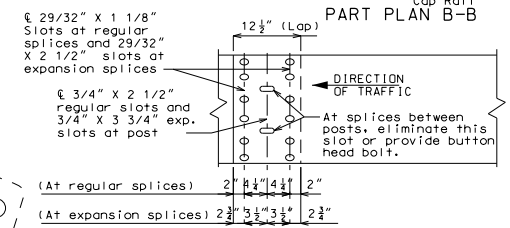
Note:  
 At the bridge ends for two-way pavement, use guard rail at all four corners and for divided pavement, use a guard rail at entrance ends only (unless required at exit end for a high fill).  
 (\* Begin bridge anchor section)



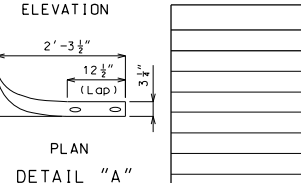
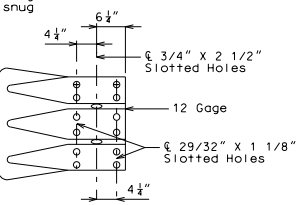
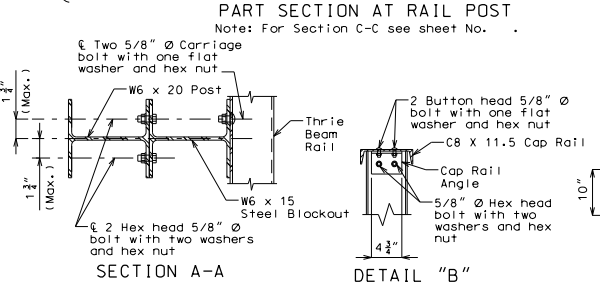
(\*\*) Required on one side of web only, but may be provided on both sides of web at the contractor's option.



OPTIONAL TIE CONNECTION



THRIE BEAM RAIL SPLICE DETAILS



SECTION THRU THRIE BEAM RAIL

Standard Drawing Guidance (do not show on plans):  
 THIS DRAWING FOR USE WITH OFF-SYSTEM PROJECTS ONLY.  
 This system meets TL-2 bridge barrier railing requirements.

ESTIMATED QUANTITIES	
ITEMS	TOTAL

B.M.  
 BRIDGE  
 STATE ROAD  
 ABOUT  
 STA.

Designed  
 Detailed  
 Checked

MISSOURI HIGHWAYS AND TRANSPORTATION COMMISSION  
 DATE  
 DESCRIPTION  
 IF A SEAL IS PRESENT ON THIS SHEET IT HAS BEEN ELECTRONICALLY SEALED AND DATED.  
 105 WEST CAPITOL  
 JEFFERSON CITY, MO 65102  
 1-888-ASK-MODOT (1-888-275-6636)

