

Standard Drawing Guidance
(do not show on plans):
THIS DRAWING FOR USE WITH
OFF-SYSTEM PROJECTS ONLY.
This system meets TL-2
bridge barrier railing
requirements.

GENERAL NOTES:
Design Specifications: AASHTO-1996 and Interims thru 1999
Panel lengths of channel members shall be attached
continuously to a minimum of four posts and a maximum of six
posts (except at end bents).

All bolts, nuts, washers, plates and elastomeric materials are
considered as parts of the thrie beam rail for payment.

All steel connecting bolts and fasteners for posts and
railing, and all anchor bolts, nuts, washers and plates shall
be galvanized after fabrication. For protective coating and
the Missouri Standard Specifications.

Rail posts shall be set perpendicular to roadway profile grade
and vertically in cross section, and aligned according to
Section 713 of the Missouri Standard Specifications, except
that the rail posts shall be aligned by the use of shims so
that in the final adjustment no part shall deviate more than
one inch from true horizontal alignment. The shims shall be
3" x 3/4" and placed between the post and the thrie beam
rail. The thickness of the shims shall be determined by the
contractor and verified by the engineer before ordering
material for this work.

Rail posts shall be seated on elastomeric pads having the same
dimensions as the post base plate and 1/16" thickness. Such
pads may be any elastomeric material, plain or fibered, having
a hardness (Durometer) of 50 or above, as certified by the
manufacturer. Additional pads or half pads may be used in
shimming for alignment. Post heights shown will increase by
the thickness of the pad. At the expansion joints in the thrie
beam rails and channels, tighten bolts, back off one-half turn
and burr threads.

At the expansion joints in the thrie beam rails and channels,
tighten bolts, back off one-half turn and burr threads.

At the thrie beam connection to posts on wings, tighten bolts,
back off one-half turn and burr threads.

Minimum length of thrie beam sections is equal to one post
space.

Use 5/8" button-head, oval shoulder bolts with hex nuts at
all slots (Thickness of hex nuts is 3/8" Min.).

Thrie beam guard rail on the bridge shall be made of steel and
shall be 12 Gage.

Posts, top plates, base plates, channels and channel splice
plates shall be fabricated from ASTM A709 Grade 36 steel and
galvanized.

Threaded rods Grade A-321 with 2 hex nuts and washers may be
substituted for the A-307 anchor bolts.

Each of the three (3) shorter anchor bolts shall be furnished
with a 1/4" x 3/2" x 2 1/2" plate (ASTM A709 Grade 36) tack
welded to the head of the bolt; or, at the contractor's
option, one plate 1/4" x 2 1/2" x 12" continuous for all three
bolts may be used.

Washers shall be used at all post bolts (between the bolt head
and beam). They shall be rectangular in shape (3" x 1 3/4" x
3/16" Min.) and slot with a 11/16" x 1" slot, or when
necessary of such design as to fit the contour of the beam.
(Use a 3" x 1 3/4" x 5/8" rectangular washer between the post
and the thrie beam rail.)

Special drilling of the thrie beam may be required at the
splices. (All drilling details are to be shown on the shop
drawings.)

Fabrication of structural steel shall be in accordance with
Section 712 of the Missouri Standard Specifications.

Expansion splices in the thrie beam rail and the channel shall
be provided at locations so that the maximum length without
expansion provisions does not exceed 200 ft.

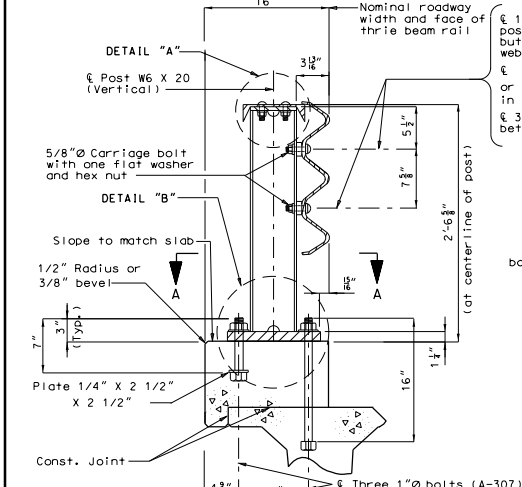
Shim plates 6" x 6" x 1/16" may be used between the top of the
post and the channel member as rail for vertical alignment.

See slab sheet for rail post spacing.

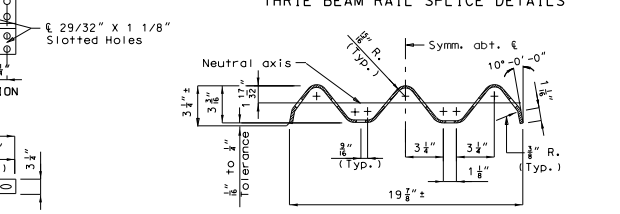
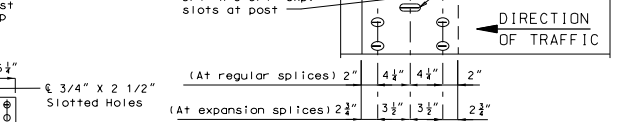
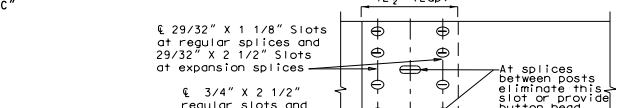
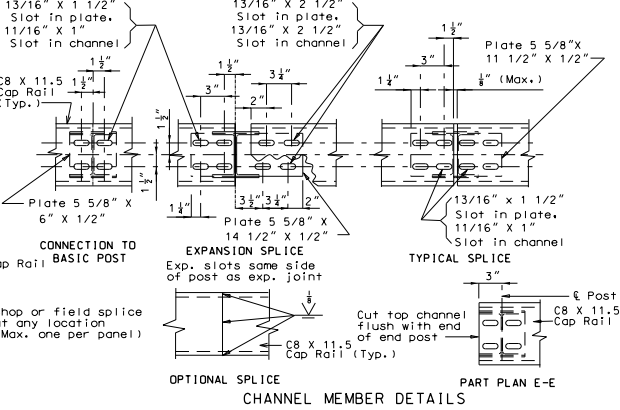
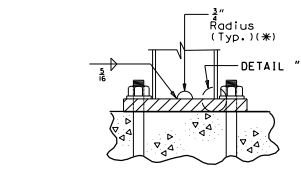
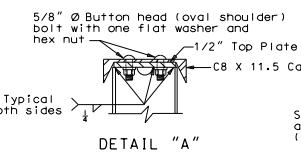
See Missouri Standard Plans Drawing 606.00 for details not
shown.

THIS MEDIA SHOULD NOT BE CONSIDERED A CERTIFIED DOCUMENT.	
DATE PREPARED	11/16/2011
ROUTE	MO
DISTRICT	BR
COUNTY	*
JOB NO.	*
CONTRACT ID.	*
PROJECT NO.	
BRIDGE NO.	THBOS3
DESCRIPTION	
DATE	
MISSOURI HIGHWAYS AND TRANSPORTATION COMMISSION	
105 WEST CAPITOL	
JEFFERSON CITY, MO 65102	
1-888-ASK-MODOT (1-888-275-6636)	

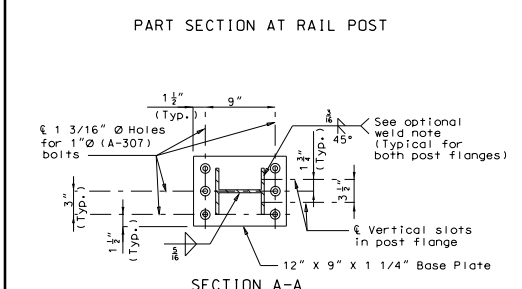
Note: At the bridge ends for two-way pavement, use guard rail at all four corners and for divided pavement, use a guard rail at entrance ends only (unless required or exit end for high fill).



Vertical slot in the post flange (Required on one side only, but may be provided on both sides of the web at the contractor's option)
Horizontal regular slot or 3/4" x 2 1/2" Horizontal expansion slot in rail
Rectangular washer between post and thrie beam rail



SECTION THRU THRIE BEAM RAIL



PART SECTION AT RAIL POST

SECTION A-A

Detailed Checked

Note: This drawing is not to scale. Follow dimensions. Sheet No. of