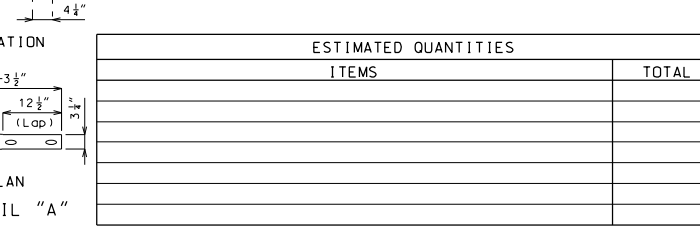
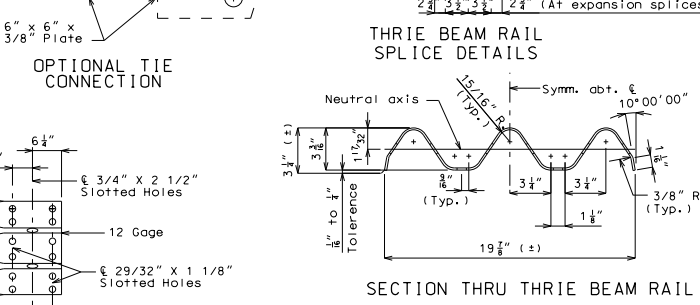
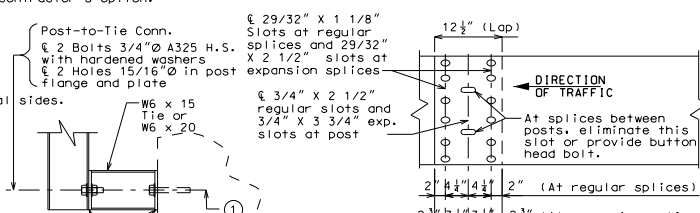
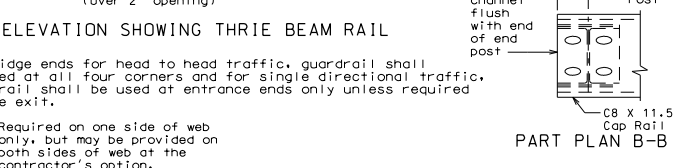
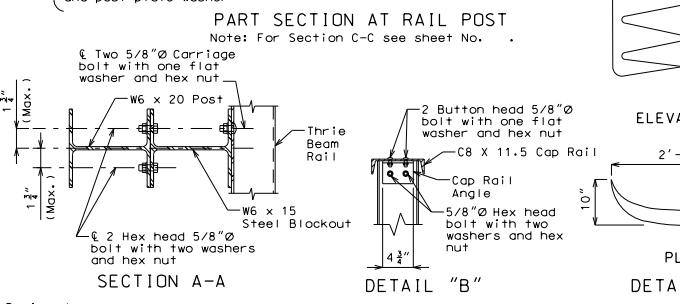
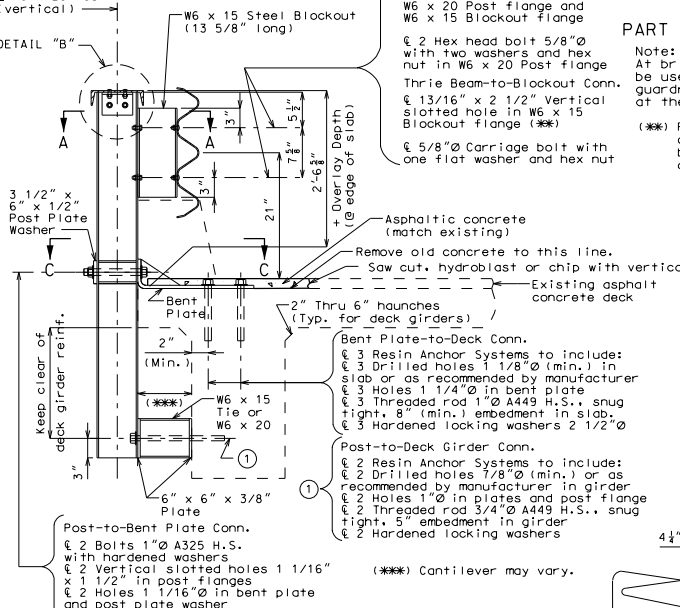
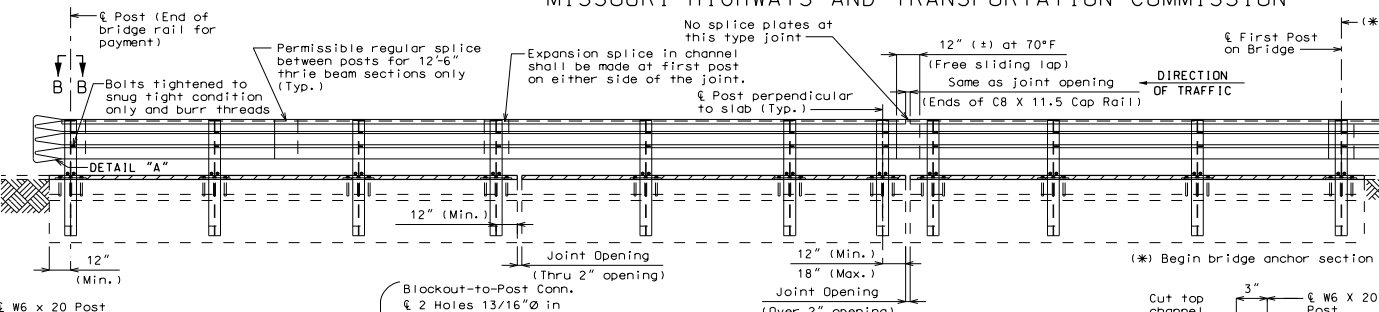


MISSOURI HIGHWAYS AND TRANSPORTATION COMMISSION

SEC/SUR \* TWP \* RGE \*

**GENERAL NOTES:**  
 Design Specifications: 2002 - AASHTO 17th Edition  
 Panel lengths of channel members shall be attached continuously to a minimum of four posts and a maximum of six posts (except at end bents).  
 All bolts, nuts, washers, plates and elastomeric materials will be considered completely covered by the contract unit price for Bridge Guardrail (Thrie Beam) other items.  
 All steel connecting bolts and fasteners for posts and railing, and all anchor bolts, nuts, washers and plates shall be galvanized after fabrication. Protective coating and material requirement of steel railing shall be in accordance with Sec 1040.  
 Rail posts shall be set perpendicular to roadway profile grade, vertically in cross section and aligned in accordance with Sec 713 except that the rail posts shall be aligned by the use of shims such that the post deviates not more than 1/2 inch from true horizontal alignment after final adjustment. The shims shall be 3" x 1 3/4" and placed between the blackout and the thrie beam rail. The thickness of the shims shall be determined by the contractor and verified by the engineer before ordering material for this work.  
 At the expansion slots in the thrie beam rails and channels, the bolts shall be tightened and backed off one-half turn and the threads shall be burred.  
 At the thrie beam connection to blackout on wings, the bolts shall be tightened and backed off one-half turn and the threads shall be burred.  
 Minimum length of thrie beam sections is equal to one post space.  
 5/8"Ø button-head, oval shoulder bolts with 3/8" min. thickness hex nuts shall be used at all slots.  
 Thrie beam guard rail on the bridge shall be 12 gage steel.  
 Posts, cap rail angles, bent plates, channels and channel splice plates shall be fabricated from ASTM A709 Grade 36 steel and galvanized.  
 Washers shall be used at all post bolts between the bolt head and beam. The flat washers shall be rectangular in shape 3" x 1 3/4" x 3/16" minimum and with a 11/16" x 1" slot, or when necessary of such design as to fit the contour of the beam. A 3" x 1 3/4" x 5/8" rectangular washer shall be used between the blackout and the thrie beam rail.  
 Special drilling of the thrie beam may be required at the splices. All drilling details shall be shown on the shop drawings.  
 Fabrication of structural steel shall be in accordance with Sec 1080.  
 Expansion splices in the thrie beam rail shall be made at either the first or second post on either side of the joint and on structure at bridge ends. When the splice is made at the second post, an expansion slot shall be provided in the thrie beam rail for connection to the first post to allow for movement.  
 In addition to the expansion provisions at the expansion joints, expansion splices in the thrie beam rail and the channel shall be provided at other locations so that the maximum length without expansion provisions does not exceed 200 ft.  
 Contractor shall verify all dimensions before ordering materials.  
 Shim plates 6" x 6" x 1/16" may be used between the top of the post and the channel member as required for vertical alignment.  
 See slab sheet for rail post spacing.  
 See Missouri Standard Plans drawing 606.00 for details not shown.

"THIS MEDIA SHOULD NOT BE CONSIDERED A CERTIFIED DOCUMENT."  
 DATE PREPARED 11/16/2011  
 ROUTE \* STATE MO  
 DISTRICT BR SHEET NO. \*  
 COUNTY \*  
 JOB NO. \*  
 CONTRACT ID. \*  
 PROJECT NO. \*  
 BRIDGE NO. THB 4A



ESTIMATED QUANTITIES	
ITEMS	TOTAL
B.M.	
BRIDGE	
STATE ROAD	STD.
ABOUT	STD.
STA.	STD.

Designed  
 Detailed  
 Checked

Note: This drawing is not to scale. Follow dimensions. Sheet No. of

DESCRIPTION DATE  
 MISSOURI HIGHWAYS AND TRANSPORTATION COMMISSION  
 105 WEST CAPITOL  
 JEFFERSON CITY, MO 65102  
 1-888-ASK-MODOT (1-888-275-6636)

