

PART SECTION THRU SLAB SHOWING THRIE BEAM RAIL

**GENERAL NOTES:**  
Design Specifications: 2002 - AASHTO 17th Edition

Panel lengths of channel members shall be attached continuously to a minimum of four posts and a maximum of six posts (except at end bents).  
All bolts, nuts, washers, and plates and elastomeric materials will be considered completely covered by the contract unit price for Bridge Guardrail (Thrie Beam) other items.

All steel connecting bolts and fasteners for posts and railing, and all anchor bolts, nuts, washers and plates shall be galvanized after fabrication except for bottom plate. Frost and the coating and material requirement of steel railing shall be in accordance with Sec 1040.

Rail posts shall be set perpendicular to roadway profile grade, vertically in cross section and aligned in accordance with Sec 713 except that the rail posts shall be aligned by the use of shims such that the post deviates not more than 1/2 inch from true horizontal alignment after final adjustment. The shims shall be 3" x 1 3/4" and placed between the blockout pads and the thrie beam rail. The thickness of the shims shall be determined by the contractor and verified by the engineer before ordering material for this work.

Rail posts shall be seated on elastomeric pads having the same dimensions as the post base plate and 1/16" thickness. Such pads may be any elastomeric material, plain or fibred, having a hardness (Duroceter) of 50 or above, as certified by the manufacturer. Additional pads or half pads may be used in shimming for alignment. Post heights shown will increase by the thickness of the pad.

At the expansion slots in the thrie beam rails and channels, the bolts shall be tightened and backed off one-half turn and the threads shall be buried.

At the thrie beam connection to blockout on wings, the bolts shall be tightened and backed off one-half turn and the threads shall be buried.

Minimum length of thrie beam sections is equal to one post space.

5/8" Ø button-head, oval shoulder bolts with 3/8" min. thickness hex nuts shall be used at all slots.

Thrie beam guard rail on the bridge shall be 12 gage steel.

Posts, cap rail angles, top plates, base plates, channels and channel splice plates shall be fabricated from ASTM A709 Grade 36 steel and galvanized.

Washers shall be used at all post bolts between the bolt head and beam. The flat washers shall be rectangular in shape 3" x 1 3/4" x 3/16" minimum and with a 11/16" x 1/16" slot, or when necessary of such design as to fit the contour of the beam. A 3" x 1 3/4" x 5/8" rectangular washer shall be used between the blockout and the thrie beam rail.

Special drilling of the thrie beam may be required at the splices. All drilling details shall be shown on the shop drawings.

Fabrication of structural steel shall be in accordance with Sec 1080.

Expansion splices in the thrie beam rail shall be made at either the first or second post on either side of the joint and on structure at bridge ends. When the splice is made at the second post, an expansion slot shall be provided in the thrie beam rail for connection to the first post to allow for movement.

In addition to the expansion provisions at the expansion joints, expansion splices in the thrie beam rail and the channel shall be provided at other locations so that the maximum length without expansion provisions does not exceed 200 ft.

Shim plates 6" x 6" x 1/16" may be used between the top of the post and the channel member as required for vertical alignment.

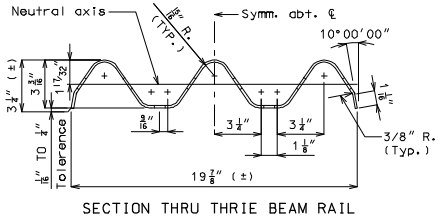
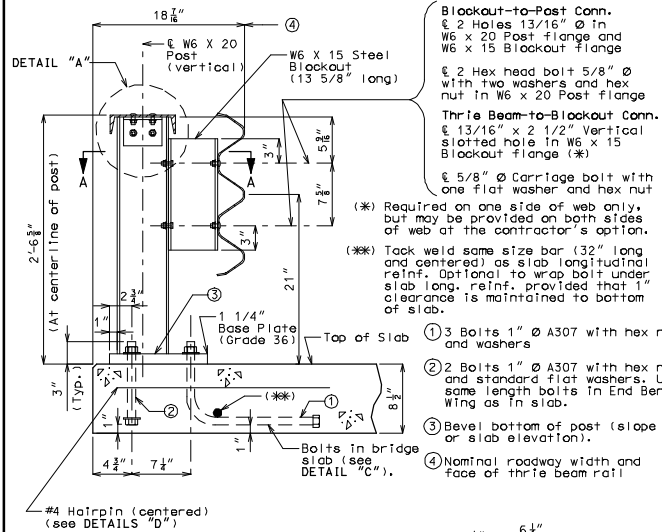
See slab sheet for rail post spacing.

See Missouri Standard Plans drawing 606.00 for details not shown.

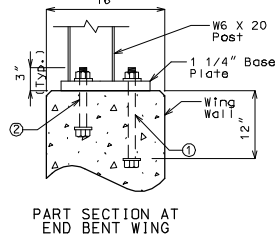
For Part Plan B-B, see Sheet No. .

If type "A" guardrail is not attached to ends of the temporary structure, flared ends shall be required. The existing thrie beam rails shall be modified to accept flared ends. Cost for furnishing and installing flared ends will be considered completely covered by the contract unit price for other items.

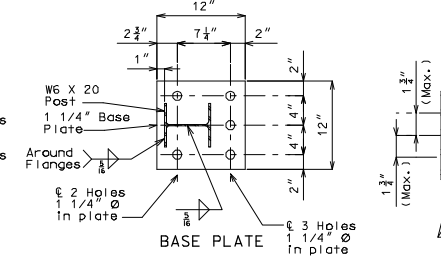
**Note:**  
At bridge ends for head to head traffic, guardrail shall be used at four corners and for single directional traffic, guardrail shall be used at entrance ends only unless required at the exit.



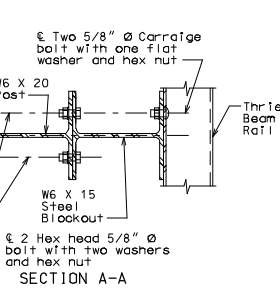
SECTION THRU THRIE BEAM RAIL



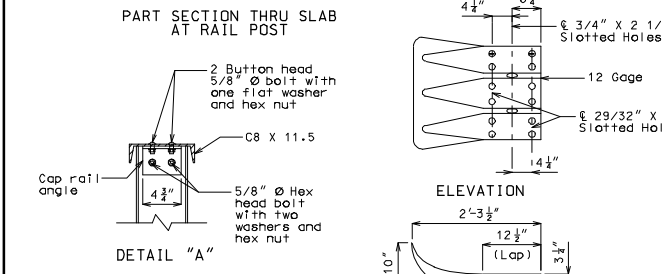
PART SECTION AT END BENT WING



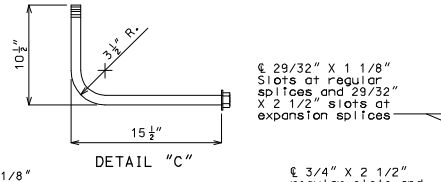
BASE PLATE



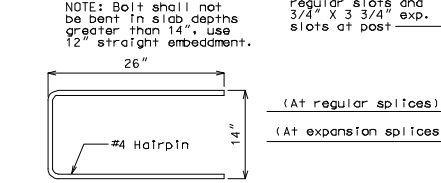
SECTION A-A



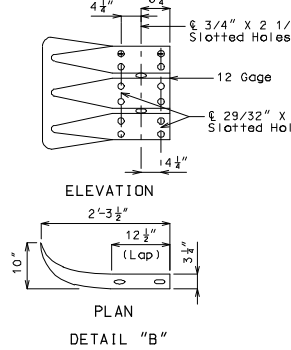
DETAIL "A"



DETAIL "C"

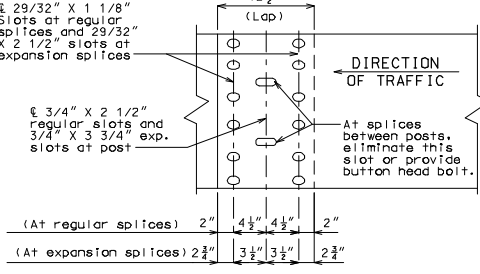


DETAIL "D"



ELEVATION

PLAN



THRIE BEAM RAIL SPlice DETAILS

Detailed Checked

Note: This drawing is not to scale. Follow dimensions. Sheet No. of

THIS MEDIA SHOULD NOT BE CONSIDERED A CERTIFIED DOCUMENT.

DATE PREPARED: 07/28/2008

ROUTE: \* STATE: MO

DISTRICT: BR SHEET NO. \*

COUNTY: \*

CITY: \*

JOB NO.:

CONTRACT ID.:

PROJECT NO.:

BRIDGE NO. THB 1A

DESCRIPTION:

DATE:

MISSOURI HIGHWAYS AND TRANSPORTATION COMMISSION

105 WEST CAPITAL JEFFERSON CITY, MO 65102 1-888-ASK-MODOT (1-888-275-6636)

Modot

REV.