

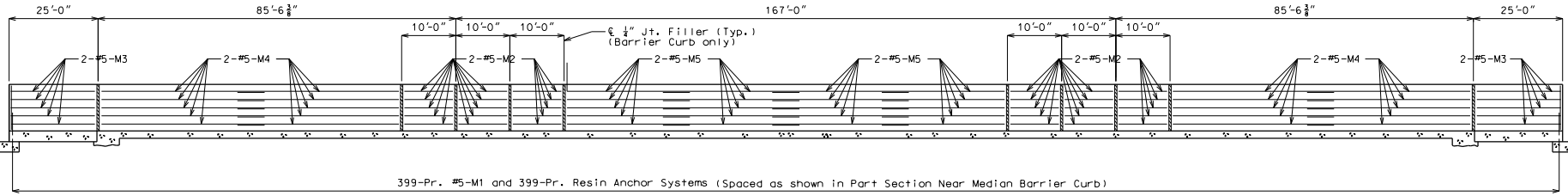
"THIS MEDIA SHOULD NOT BE CONSIDERED A CERTIFIED DOCUMENT."

DATE PREPARED	7/21/2011
ROUTE	* MO
DISTRICT	BR
COUNTY	*
JOB NO.	*
CONTRACT NO.	*
PROJECT NO.	
BRIDGE NO.	MBC03

DESCRIPTION	
DATE	

MISSOURI HIGHWAYS AND TRANSPORTATION COMMISSION	105 WEST CAPITOL JEFFERSON CITY, MO 65102 1-888-ASK-MODOT (1-888-275-6636)
---	--

IF A SEAL IS PRESENT ON THIS SHEET IT HAS BEEN ELECTRONICALLY SEALED AND DATED.



SPAN (1-2) SPAN (2-3) SPAN (3-4)

SECTION NEAR MEDIAN BARRIER CURB (TYPE C)

Note: Longitudinal dimensions are horizontal.

Note:

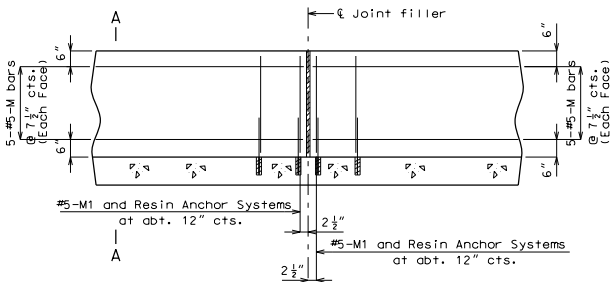
The contractor shall use one of the qualified resin anchor systems in accordance with Sec 1039.

Cost of furnishing and installing the resin anchor system complete-in-place will be completely covered by the contract unit price bid for Median Barrier Curb (Type C).

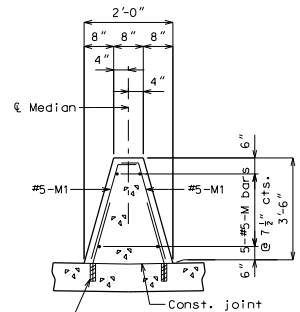
The minimum embedment depth in concrete with $f'c = 4,000$ psi for the resin anchor system shall be that required to meet the minimum ultimate pullout strength in accordance with Sec 1039 but shall not be less than 5".

An epoxy coated #5 Grade 60 reinforcing bar long shall be substituted for the threaded rod.

Concrete traffic barrier delineators shall be placed on top of the median barrier curb (Type C) as shown on Missouri Standard Plans 617.10 and in accordance with Sec 617. Delineators on bridges with two-lane, two-way traffic shall have retroreflective sheeting on both sides. Concrete traffic barrier delineators will be considered completely covered by the contract unit price for "Median Barrier Curb (Type C)".



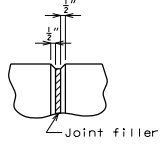
PART SECTION NEAR MEDIAN BARRIER CURB (CAST-IN-PLACE CONVENTIONAL FORMING OPTION)



PART SECTION A-A

Note: Use a minimum lap of 2'-11" for #5 horizontal median barrier curb (Type C) bars.

The cross-sectional area above the slab = 4.70 sq. ft.



FILLED JOINT DETAIL

Note:

Top of median barrier curb (Type C) shall be built parallel to grade with median barrier curb joints (except at end bents) normal to grade.

All exposed edges of median barrier curb (Type C) shall have either a 1/2" radius or a 3/8" bevel, unless otherwise noted.

Payment for all concrete and reinforcement, complete-in-place will be considered completely covered by the contract unit price for safety median barrier curb (Type C) (Type D) per T1rear foot.

Concrete in the median barrier curb (Type C) (Type D) shall be Class B-1.

Measurement of median barrier curb (Type C) is to the nearest linear foot for each structure, measured along the top of slab from end of slab to end of slab.

Detailed Checked

Note: This drawing is not to scale. Follow dimensions. Sheet No. of