

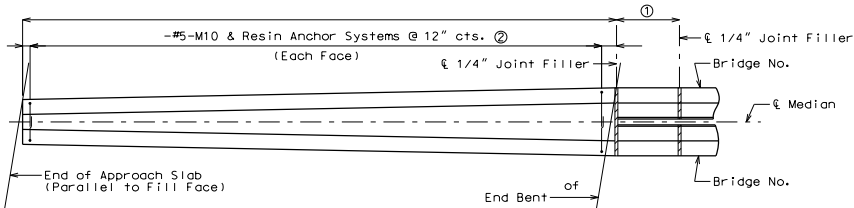
Notes:

Plastic waterstop shall be placed in all barrier curb (Type D) filled joints, except structures with superelevation; use on all lower barrier curb (Type D) joints only.

Cost of plastic waterstop, complete-in-place, will be considered completely covered by the contract unit price for Barrier Curb (Type D).

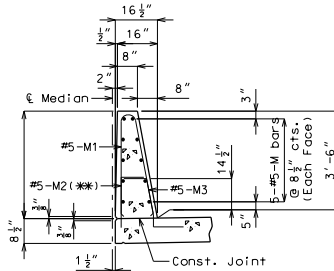
Standard Drawing Guidance (do not show on plans):

- 5'-0" ±, consult SPM.
- Resin Anchor System Option for existing approach slab only, consult SPM if it is a new construction.

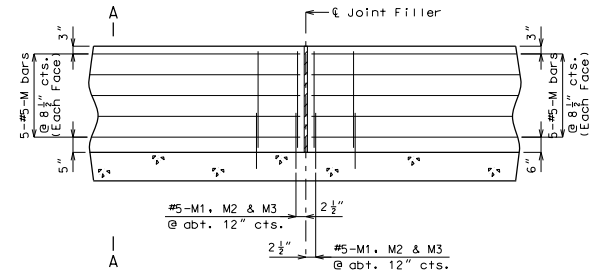


PLAN OF TRANSITION ON APPROACH SLAB

Note: M9 bars not shown for clarity.



PART SECTION A-A



PART ELEVATION (CAST-IN-PLACE CONVENTIONAL FORMING OPTION)

Notes:

Concrete in the barrier curb (Type D) and median barrier curb transition (Type C) shall be Class B-1.

The contractor shall use one of the qualified resin anchor systems in accordance with 1039. (2)

Cost of furnishing and installing the resin anchor system complete-in-place will be considered completely covered by the contract unit price for (2).

The minimum embedment depth in concrete with  $f'c = 4,000$  psi for the resin anchor system shall be that required to meet the minimum ultimate pullout strength in accordance with Sec 1039 but shall not be less than 5".

An epoxy coated #5 Grade 60 reinforcing bar long shall be substituted for the " Ø threaded rod.

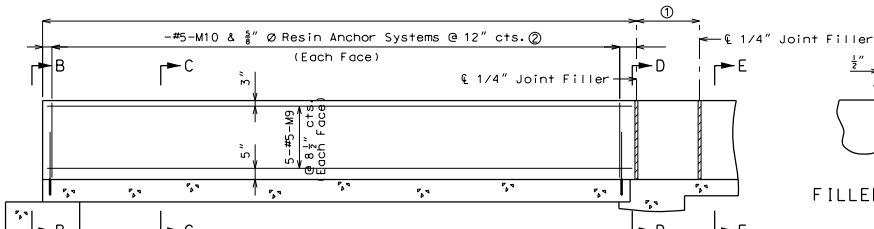
Top of barrier curb (Type D) and median barrier curb shall be built parallel to grade with barrier curb joints (except at end bents) normal to grade.

All exposed edges of barrier curb (Type D) and median shall have either a 1/2" radius or a 3/8" bevel, unless otherwise noted.

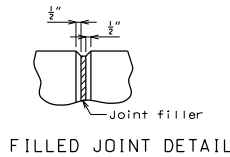
Payment for all concrete and reinforcement, complete-in-place will be completely covered by the contract unit price for Barrier Curb (Type D) per linear foot.

Measurement of barrier curb (Type D) is to the nearest linear foot for each structure, measured along the outside top of slab from end of slab to end of slab.

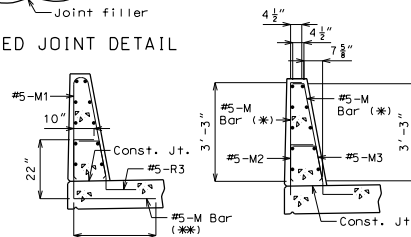
Concrete traffic barrier delineators shall be placed on top of the median barrier curb (Type C) (Type D) as shown on Missouri Standard Plans 617.10 and in accordance with Sec 617. Delineators on bridges with two-lane, two-way traffic shall have retroreflective sheeting on both sides. Concrete traffic barrier delineators will be considered completely covered by the contract unit price for "Median Barrier Curb (Type C) (Type D)".



ELEVATION OF TRANSITION ON APPROACH SLAB



FILLED JOINT DETAIL



M-BAR PERMISSIBLE ALTERNATE SHAPE

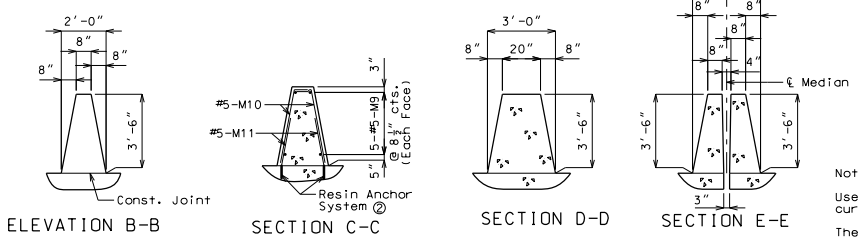
Note:

Use a minimum lap of 2'-11" for #5 horizontal median barrier curb (Type D) bars.

The cross-sectional area above the slab = 3.49.

(\*) The M1 bar may be separated into two bars as shown, at the contractor's option, only when slip forming is not used. (All dimensions are out to out.)

(\*\*) The M3 bar and #5 bottom transverse slab bar in cantilever (P/S panels only) combination may be furnished as one bar as shown, at the contractor's option.

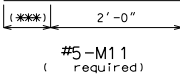


ELEVATION B-B

SECTION C-C

SECTION D-D

SECTION E-E



(\*\*) Manufacturer's embedment length.

Note: Measurement of Median Barrier Curb (Type C) is to the nearest linear foot measured for each structure, measured along the top of the slab from  $\epsilon$  to  $\epsilon$  of sleeper slab.

MEDIAN BARRIER CURB TRANSITION (TYPE C) BARRIER CURB (TYPE D)

Detailed Checked Note: This drawing is not to scale. Follow dimensions. Sheet No. of

"THIS MEDIA SHOULD NOT BE CONSIDERED A CERTIFIED DOCUMENT."

DATE PREPARED: 7/21/2011

ROUTE: MO

DISTRICT: BR

COUNTY: \*

JOB NO.: \*

CONTRACT ID.: \*

PROJECT NO.:

BRIDGE NO.: MBC01

DESCRIPTION:

DATE:

MISSOURI HIGHWAYS AND TRANSPORTATION COMMISSION

105 WEST CAPITOL JEFFERSON CITY, MO 65102 1-888-ASK-MODOT (1-888-275-6636)

IF A SEAL IS PRESENT ON THIS SHEET IT HAS BEEN ELECTRONICALLY SEALED AND DATED.