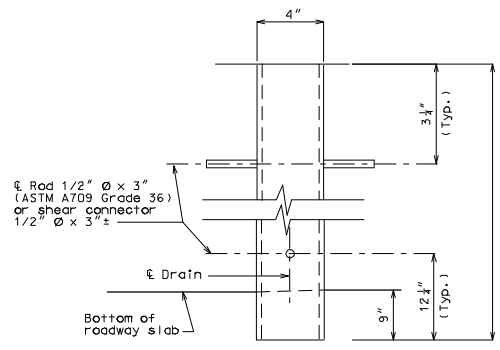
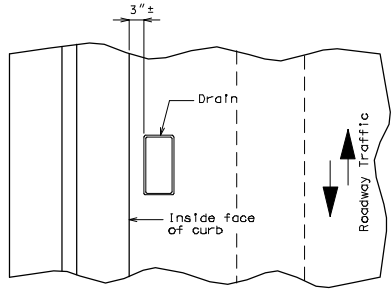


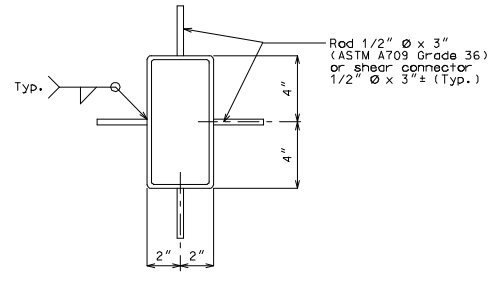
PART SECTION NEAR DRAIN



ELEVATION OF DRAIN



PART PLAN OF SLAB AT DRAIN



PLAN OF DRAIN

SLAB DRAIN DETAILS

Notes:

- Slab drains may be fabricated of either 1/4" welded sheets of ASTM A709 Grade 36 steel or from 1/4" structural steel tubing ASTM A500 or A501.
- Slab drain bracket assembly shall be ASTM A709 Grade 36 steel.
- Outside dimensions of drains are 8" x 4".
- Locate drains in slab by dimensions shown in Part Section Near Drain.
- Shift reinforcing steel in field where necessary to clear drains.
- The drains shall be galvanized in accordance with ASTM A123.
- Shop drawings will not be required for the slab drains.

"THIS MEDIA SHOULD NOT BE CONSIDERED A CERTIFIED DOCUMENT."

DATE PREPARED 07/28/2008	
ROUTE *	STATE MO
DISTRICT BR	SHEET NO. *
COUNTY *	
JOB NO. *	
CONTRACT ID.	
PROJECT NO.	
BRIDGE NO. DRA 7	

DATE	DESCRIPTION

MISSOURI HIGHWAYS AND TRANSPORTATION COMMISSION

105 WEST CAPITOL  
JEFFERSON CITY, MO 65102  
1-888-ASK-MODOT (1-888-275-6636)

IF A SEAL IS PRESENT ON THIS SHEET IT HAS BEEN ELECTRONICALLY SEALED AND DATED.