

"THIS MEDIA SHOULD NOT BE CONSIDERED A CERTIFIED DOCUMENT."

DATE PREPARED 7/21/2011	
ROUTE *	STATE MO
DISTRICT BR	SHEET NO. *
COUNTY *	
JOB NO. *	
CONTRACT ID.	
PROJECT NO.	
BRIDGE NO. BAN 18	

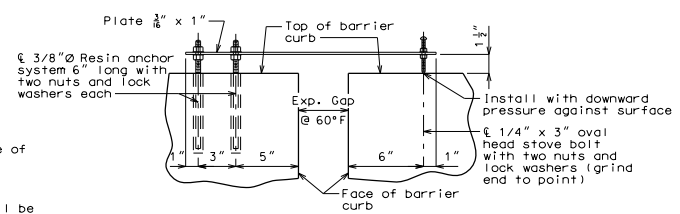
DESCRIPTION	
DATE	

MISSOURI HIGHWAYS AND TRANSPORTATION COMMISSION	105 WEST CAPITOL JEFFERSON CITY, MO 65102 1-888-ASK-MODOT (1-888-275-6636)
---	--

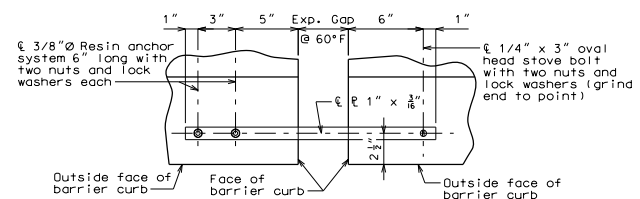
DATE	
DESCRIPTION	

Notes:
A movement gauge shall be provided on one side of bridge at all barrier curb expansion joints.
All steel shall be galvanized.

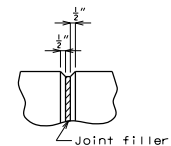
Cost of movement gauge, complete-in-place, will be considered completely covered by the contract unit price for Barrier Curb (Type D).



PART ELEVATION OF BARRIER CURB SHOWING MOVEMENT GAUGE



PART PLAN OF BARRIER CURB SHOWING MOVEMENT GAUGE



FILLED JOINT DETAIL

Notes:
Top of barrier curb (Type D) shall be built parallel to grade with barrier curb joints (except at end bents) normal to grade.

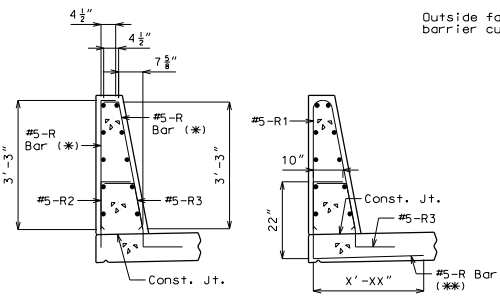
All exposed edges of barrier curb (Type D) shall have either a 3/8" radius or a 3/16" bevel, unless otherwise noted.

Payment for all concrete and reinforcement, complete-in-place, will be considered completely covered by the contract unit price for Barrier Curb (Type D) per linear foot.

Concrete in the barrier curb (Type D) shall be Class B-1.

Measurement of barrier curb (Type D) is to the nearest linear foot for each structure, measured along the outside top of slab from end of wing to end of wing.

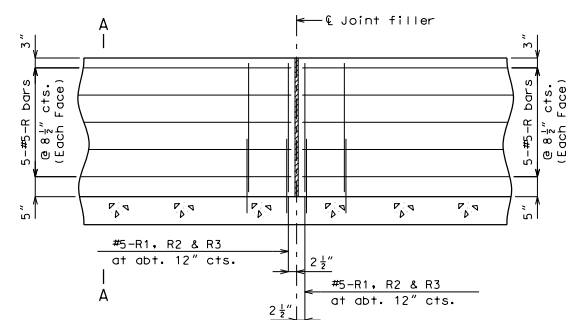
Concrete traffic barrier delineators shall be placed on top of the barrier curb (Type D) as shown on Missouri Standard Plans 617.10 and in accordance with Sec 617. Delineators on bridges with two-lane, two-way traffic shall have retroreflective sheeting on both sides. Concrete traffic barrier delineators will be considered completely covered by the contract unit price for "Barrier Curb (Type D)".



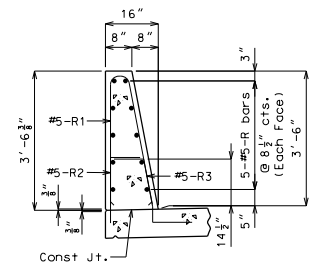
R-BAR PERMISSIBLE ALTERNATE SHAPE

(*) The R1 bar may be separated into two bars as shown, at the contractor's option, only when slip forming is not used. (All dimensions are out to out.)

(**) The R2 bar and #5 bottom transverse slab bar in cantilever (P/S panels only) combination may be furnished as bar as shown, at the contractor's option.



PART SECTION NEAR LEFT BARRIER CURB (TYPE D) (CAST-IN-PLACE CONVENTIONAL FORMING OPTION)



PART SECTION A-A

Notes:
Use a minimum lap of 2'-11" for #5 horizontal barrier curb (Type D) bars.
The cross-sectional area above the slab = 3.52 sq. ft.