

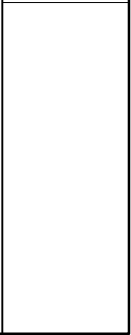
"THIS MEDIA SHOULD NOT BE CONSIDERED A CERTIFIED DOCUMENT."

DATE PREPARED	8/9/2011
ROUTE	*
STATE	MO
DISTRICT	BR
SHEET NO.	*
COUNTY	
JOB NO.	*
CONTRACT ID.	
PROJECT NO.	
BRIDGE NO.	BAN 1

DESCRIPTION	DATE

MISSOURI HIGHWAYS AND TRANSPORTATION COMMISSION

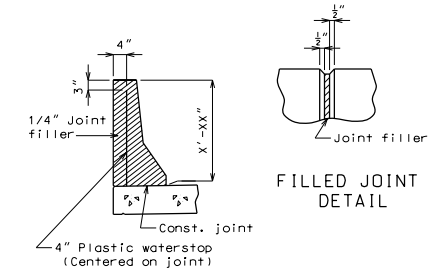
105 WEST CAPITOL JEFFERSON CITY, MO 65102
1-888-ASK-MODOT (1-888-275-6636)



Notes:
A movement gauge shall be provided on one side of bridge at all safety barrier curb expansion joints.
All steel shall be galvanized.

Cost of movement gauge, complete-in-place, will be considered completely covered by the contract unit price for Safety Barrier Curb.

Concrete traffic barrier delineators shall be placed on top of the safety barrier curb as shown on Missouri Standard Plans 617.10 and in accordance with Sec 617. Delineators on bridges with two-lane, two-way traffic shall have retroreflective sheeting on both sides. Concrete traffic barrier delineators will be considered completely covered by the contract unit price for "Safety Barrier Curb".

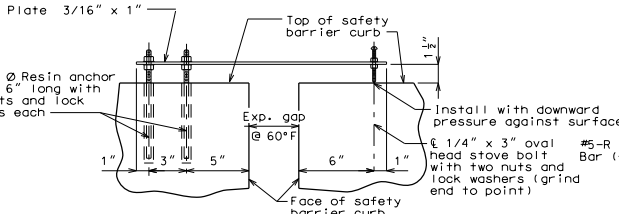


DETAILS OF PLASTIC WATERSTOP

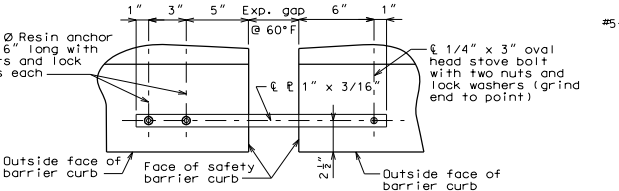
Notes:
Plastic waterstop shall be placed in all safety barrier curb filled joints, except structures with superelevation, use an all lower safety barrier curb joints only.

Cost of plastic waterstop, complete-in-place, will be considered completely covered by the contract unit price for Safety Barrier Curb.

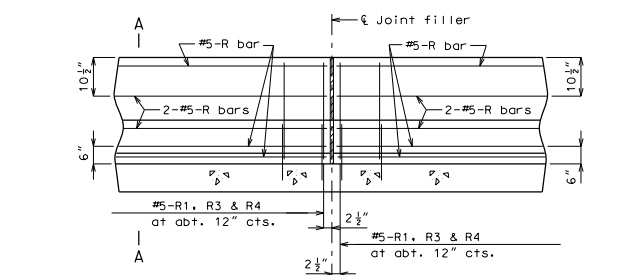
Detailed Checked



PART ELEVATION OF BARRIER CURB SHOWING MOVEMENT GAUGE

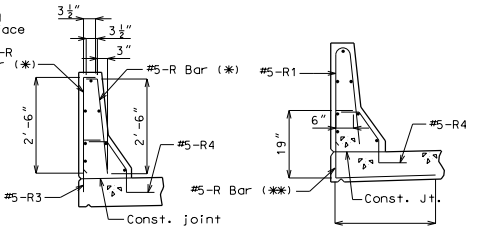


PART PLAN OF BARRIER CURB SHOWING MOVEMENT GAUGE



PART SECTION NEAR LEFT SAFETY BARRIER CURB (CAST-IN-PLACE CONVENTIONAL FORMING OPTION)

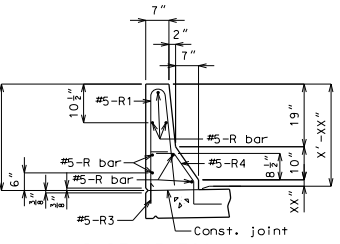
Note: This drawing is not to scale. Follow dimensions. Sheet No. of



R-BAR PERMISSIBLE ALTERNATE SHAPE

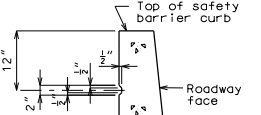
(**) The R1 bar may be separated into two bars as shown, at the contractor's option, only when slip forming is not used. (All dimensions are out to out.)

(**) The R3 bar and #5 bottom transverse slab bar in cantilever (P/S panels only) combination may be furnished as one bar as shown, at the contractor's option.

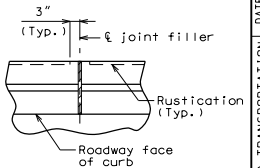


PART SECTION A-A

Notes:
Use a minimum lap of 2'-11" for #5 horizontal safety barrier curb bars.
The cross-sectional area above the slab = 2.28 sq. ft.



PART SECTION SHOWING RUSTICATION DETAILS



PART PLAN SHOWING SAFETY BARRIER CURB JOINT

Notes:
Top of safety barrier curb shall be built parallel to grade with barrier curb joints (except at end bents) normal to grade.

All exposed edges of safety barrier curb shall have either a 1/8" radius or a 3/8" bevel, unless otherwise noted.

Payment for all concrete and reinforcement, complete-in-place, will be considered completely covered by the contract unit price for safety barrier curb per linear foot.

Concrete in the safety barrier curb shall be Class B-1.

Measurement of safety barrier curb is to the nearest linear foot for each structure, measured along the outside top of slab from end of wing to end of wing.

IF A SEAL IS PRESENT ON THIS SHEET IT HAS BEEN ELECTRONICALLY SEALED AND DATED.