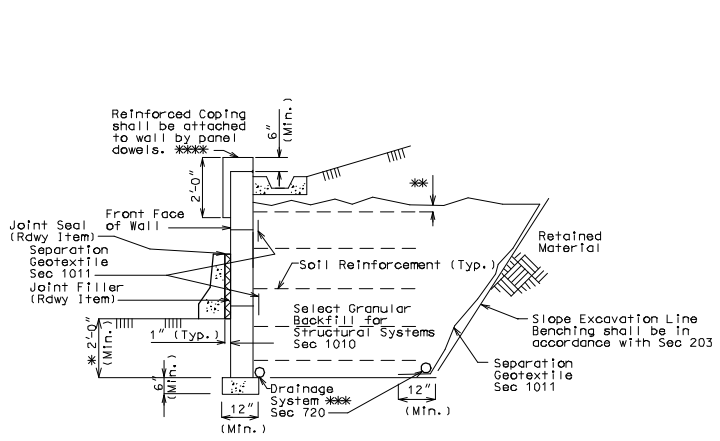
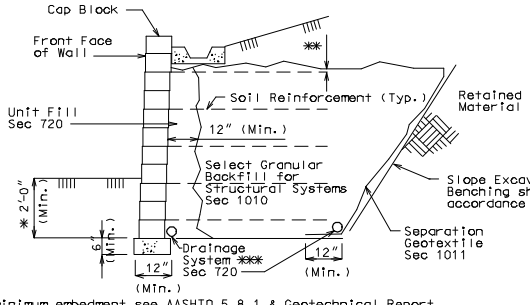


"THIS MEDIA SHOULD NOT BE CONSIDERED A CERTIFIED DOCUMENT."



* For minimum embedment see AASHTO 5.8.1 & Geotechnical Report.
 ** Topmost layer of reinforcement shall be fully covered with select granular backfill for structural systems, as approved by the wall manufacturer, before placement of the Separation Geotextile.

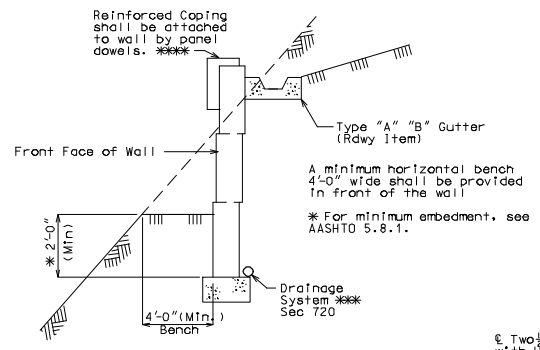
TYPICAL SECTION THRU LARGE PANEL WALL



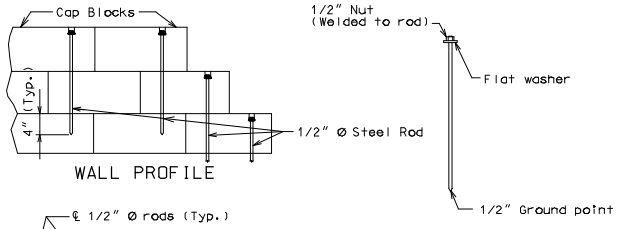
* For minimum embedment see AASHTO 5.8.1 & Geotechnical Report.
 ** Topmost layer of reinforcement shall be fully covered with select granular backfill for structural systems, as approved by the wall manufacturer, before placement of the Separation Geotextile.

TYPICAL SECTION THRU SMALL BLOCK WALL

NOTE TO DETAILER:
 All notes and details shown need to be revised per project.



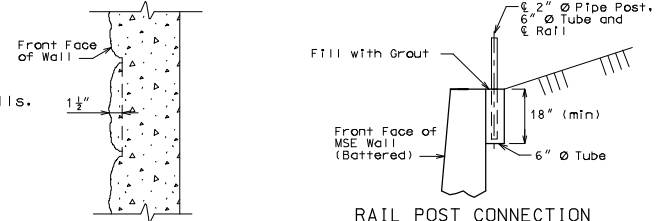
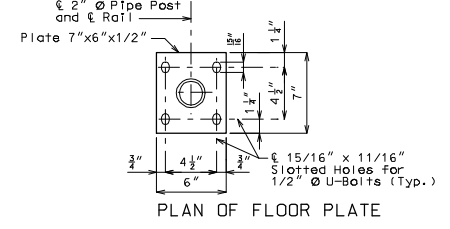
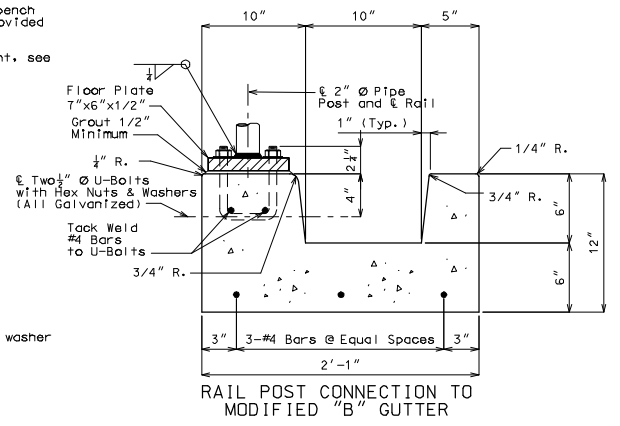
TYPICAL SECTION THRU WALL



Note:
 Holes shall be 5/8" round and extended 4" into the third layer of blocks, recessed 2" deep by 1 1/2" round.
 Rods or reinforcing bars shall be secured by an approved resin anchor system in accordance with Sec 1039.
 Recess hole shall be backfilled with non-shrink cement grout.

*** Adjustment in the vertical alignment of the drainage pipes from that depicted in the plans may be necessary to ensure positive flow out of the drainage system.
 Outlet ends of pipes shall be located to avoid clogging or flow into the drainage system.

NOTE TO DETAILER:
 Following note does not apply to Small Block Walls.
 *** Inverted U-shape reinforced capstone may be used in lieu of coping. Panel dowels for capstone as required by manufacturer.



DATE PREPARED	07/28/2008
ROUTE	*
DISTRICT	BR
COUNTY	*
JOB NO.	*
CONTRACT ID.	*
PROJECT NO.	*
BRIDGE NO.	MSE 04
DESCRIPTION	
DATE	
MISSOURI HIGHWAYS AND TRANSPORTATION COMMISSION	
105 WEST CAPITAL JEFFERSON CITY, MO 65102 1-888-ASK-MODOT (1-888-275-6636)	