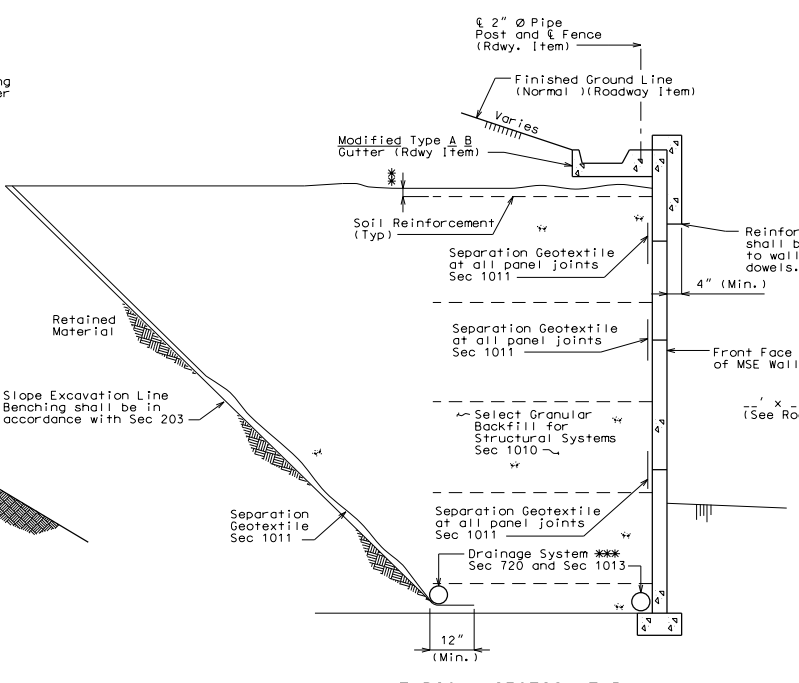
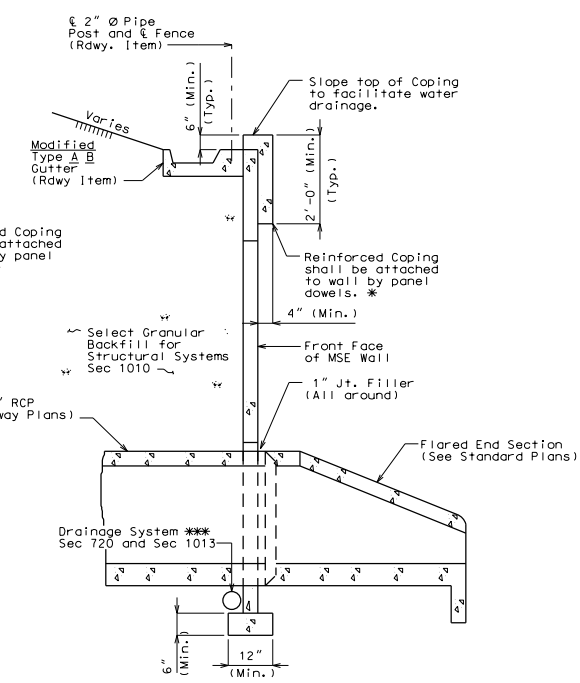


TYPICAL SECTION THRU LARGE BLOCK WALL



TYPICAL SECTION THRU LARGE BLOCK WALL SHOWING FILTER CLOTH



TYPICAL SECTION THRU LARGE BLOCK WALL AT CULVERT

Standard Drawing Guidance (do not show on plans):

For Modified Type A and Type B Gutter and Fence Post Connection details, see Missouri Standard Plans No. 607.11.

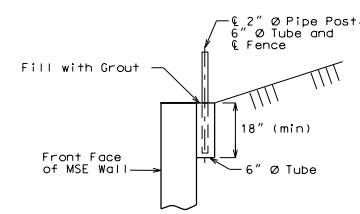
For Type A & Type B Gutter information, see Missouri Standard Plans No. 609.00.

① Show the minimum embedment = maximum (2' embedment based on Geotechnical Report and global stability requirements). Minimum embedment shall be provided in accordance with AASHTO 5.8.1 and Geotechnical Report.

All notes and details shown need to be revised per project.

- \* Inverted U-shape reinforced capstone may be used in lieu of coping. Panel dowels for capstone shall be required and as provided by manufacturer.
  - \*\* Topmost layer of reinforcement shall be fully covered with select granular backfill for structural systems, as approved by the wall manufacturer, before placement of the Separation Geotextile.
  - \*\*\* Minimum 6" diameter perforated PVC or PE pipe, unless larger size pipes are required by design by wall manufacturer.
- Adjustment in the vertical alignment of the drainage pipes from that depicted in the plans may be necessary to ensure positive flow out of the drainage system.
- Outlet ends of pipes shall be located to avoid clogging or flow into the drainage system.

Vertical joint in MSE wall shall be located at each exterior culvert wall.



FENCE POST CONNECTION BEHIND WALL (WITHOUT GUTTER)

DETAILS FOR GENERIC MSE WALL

Note: This drawing is not to scale. Follow dimensions. Sheet No. of

"THIS MEDIA SHOULD NOT BE CONSIDERED A CERTIFIED DOCUMENT."

DATE PREPARED	9/9/2011
ROUTE	MO
DISTRICT	BR
COUNTY	*
JOB NO.	*
CONTRACT ID.	*
PROJECT NO.	MSE 02
BRIDGE NO.	

DESCRIPTION	DATE

MISSOURI HIGHWAYS AND TRANSPORTATION COMMISSION

105 WEST CAPITOL JEFFERSON CITY, MO 65102 1-888-ASK-MODOT (1-888-275-6636)

IF A SEAL IS PRESENT ON THIS SHEET IT HAS BEEN ELECTRONICALLY SEALED AND DATED.