

"THIS MEDIA SHOULD NOT BE CONSIDERED A CERTIFIED DOCUMENT."

DATE PREPARED		06/16/2009	
ROUTE	STATE	* MO	*
DISTRICT	SHEET NO.	BR	*
COUNTY			
* JOB NO.			
* CONTRACT ID.			
PROJECT NO.			
BRIDGE NO. DLS 01			

DESCRIPTION	DATE

MISSOURI HIGHWAYS AND TRANSPORTATION COMMISSION

105 WEST CAPITOL JEFFERSON CITY, MO 65102 1-888-ASK-MODOT (1-888-275-6636)

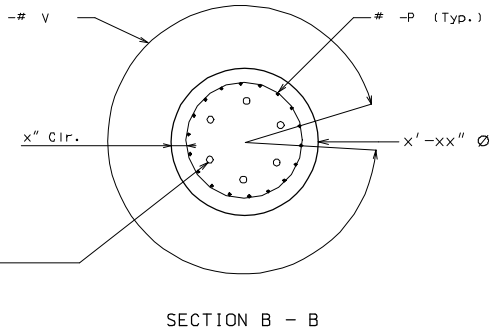
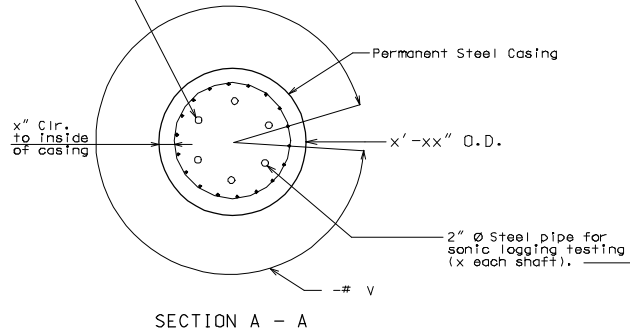
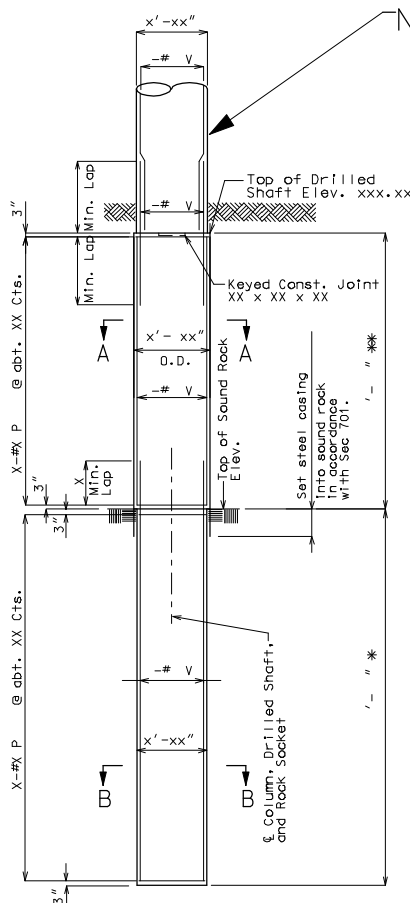


NOTE TO DETAILER: BRIDGE SUBSTRUCTURE INFORMATION WILL VARY PER PROJECT

NOTE TO DETAILER: Check with Project Manager to determine if permanent, temporary or no steel casing will be used.

NOTE TO DETAILER: Number of pipes (equally spaced) for sonic logging test

2.5 ft (750 mm) < Diameter <= 2.5 ft (750 mm)	2 pipes
3.5 ft (1050 mm) < Diameter <= 3.5 ft (1050 mm)	3 pipes
5.0 ft (1500 mm) < Diameter <= 5.0 ft (1500 mm)	4 pipes
8.0 ft (2400 mm) < Diameter <= 8.0 ft (2400 mm)	6 pipes
8.0 ft (2400 mm) < Diameter	8 pipes



ELEVATION OF DRILLED SHAFTS AND ROCK SOCKETS

* Pay Items Rock Socket (' - " diameter)
 ** Pay Items Drilled Shaft (' - " diameter)

Substructure Quantity Table for Bent No.	
Item	Quantity
Class 1 Excavation	cu. yard
Class 2 Excavation	cu. yard
Drilled Shafts (X ft. X In. Diameter)	linear foot
Rock Sockets (X ft. X In. Diameter)	linear foot
Supplementary Television Camera Inspection	each
Foundation Inspection Holes	linear foot
Concrete Coring	linear foot
Sonic Logging Testing	each
Class B Concrete (Substructure)	cu. yard
Reinforcing Steel (Bridges)	pounds

These quantities are included in the estimated quantities table on sheet no. .

NOTE:

An additional 4 feet has been added to V-bar lengths and an additional -- P-bars has been added for possible change in drilled shaft or rock socket depth. The excess V-bar length shall be cut off or included in the reinforcement lap if not required. The P-bars shall be spaced similarly to that shown in elevation where required or a lesser spacing if not required but not less than 5" cts.

Concrete coring shall be performed on shafts and rock sockets in accordance with Sec 701. of the drilled shafts and rock sockets. Sonic logging testing shall be performed on all drilled shafts and rock sockets.

The thickness of the steel casing shall meet all the requirements of Sec 701 with the minimum thickness being 1/2 inch.

Detailed Checked

Note: This drawing is not to scale. Follow dimensions.

Sheet No. of