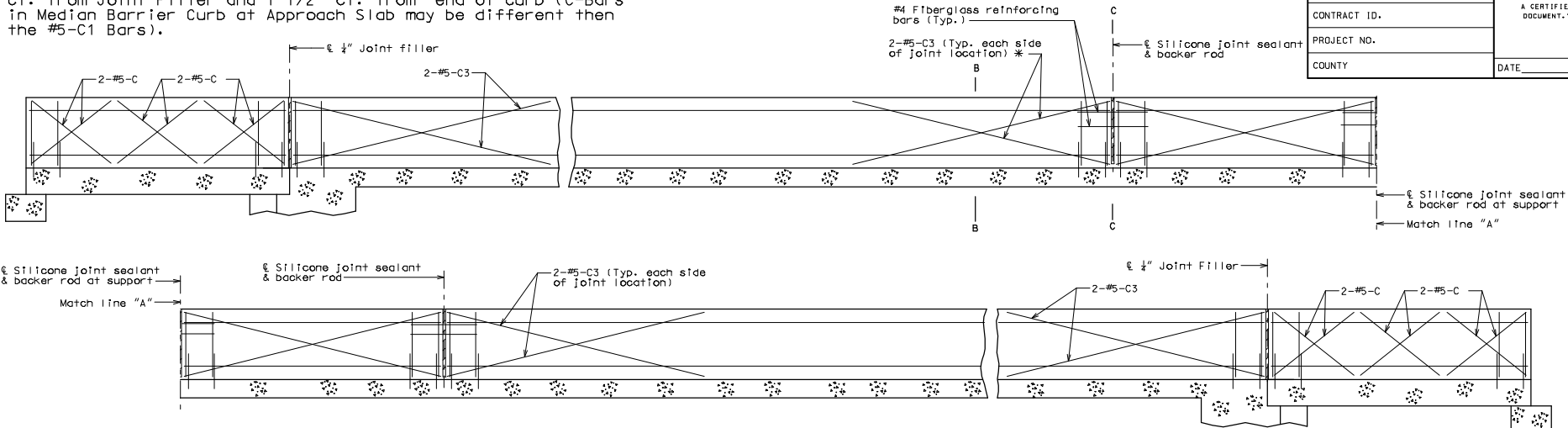


NOTE TO DETAILER:
 C-Bars in Median Barrier Curb at Approach Slab shall have 1 1/2" cl. from Joint Filler and 1 1/2" cl. from end of curb (C-Bars in Median Barrier Curb at Approach Slab may be different than the #5-C1 Bars).

ROUTE	STATE	DISTRICT	SHEET NO.	"THIS MEDIA SHOULD NOT BE CONSIDERED A CERTIFIED DOCUMENT." DATE
	MO			
JOB NO.				
CONTRACT ID.				
PROJECT NO.				
COUNTY				



Note:

Top of median barrier curb (Type C) shall be built parallel to grade with barrier curb joints (except at end bents) normal to grade.

Payment for all concrete and reinforcement, complete-in-place will be considered completely covered by the contract unit price for median barrier curb (Type C) per linear foot.

Concrete in the median barrier curb shall be Class B-1.

Measurement of median barrier curb (Type C) is to the nearest linear foot for each structure, measured along the top of slab from end of slab to end of slab.

Concrete traffic barrier delineators shall be placed on top of the median barrier curb (Type C) as shown on Missouri Standard Plans 617.10 and in accordance with Sec 617. Concrete traffic barrier delineators will be considered completely covered by the contract unit price for "Median Barrier Curb (Type C)".

The minimum embedment depth in concrete with $f'c = 4,000$ psi for the resin anchor system shall be that required to meet the minimum ultimate pullout strength in accordance with Sec 1059 but shall not be less than 5".

The curb shall be cured by application of Type 1-D or Type 2 Liquid Membrane-Forming Compound in accordance with Sec 1055. Surface sealing for concrete in accordance with Sec 703 is not required. Application of linseed oil at the contractor's expense is permitted.

TYPICAL SECTION NEAR MEDIAN BARRIER CURB AT SUPPORT LOCATIONS (OPTIONAL SLIP-FORM BRIDGE MEDIAN BARRIER CURB)

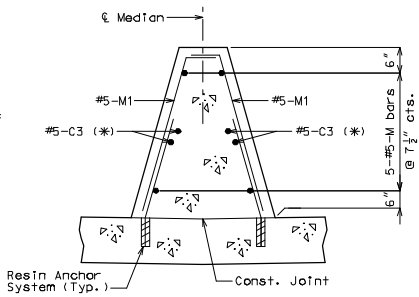
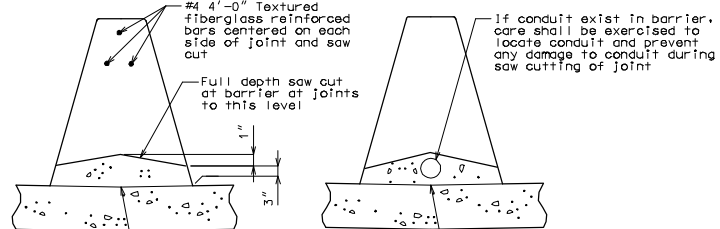
Note:

Joint sealant and backer rods shall be used on all slip-form barrier curbs (Type C) instead of joint filler shall be in accordance with Sec 717 for silicone joint sealant for saw cut and formed joints (except at end of slab and the end bents).

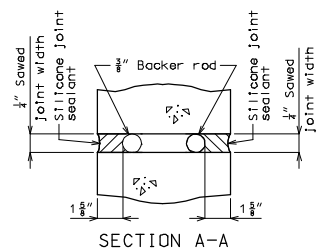
Plastic waterstop shall not be used with slip-form options.

For Slip-Form Option, all sides of median barrier curb (Type C) shall have a vertically broomed finish and the curb top shall have a transversely broomed finish.

C Bars (Slip-form option only) shall be used in addition to cast-in-place conventional forming reinforcement for bridge median barrier curb (Type C).



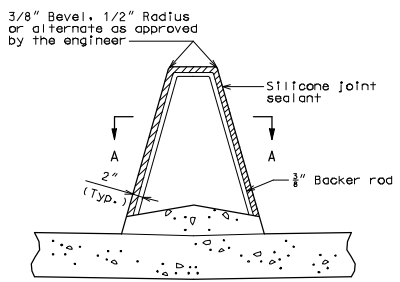
PART SECTION B-B
 Note: * Each side of joint location.



SECTION A-A

Note:

Cost of silicone joint sealant and backer rod, complete-in-place, will be considered completely covered by the contract unit price for barrier curb (Type D).



SECTION THRU JOINT

OPTIONAL SLIP-FORM MEDIAN BARRIER CURB (TYPE C)

Detailed Checked

Note: This drawing is not to scale. Follow dimensions.

Sheet No. of

MBC04

IF A SEAL IS PRESENT ON THIS SHEET IT HAS BEEN ELECTRONICALLY SEALED AND DATED.