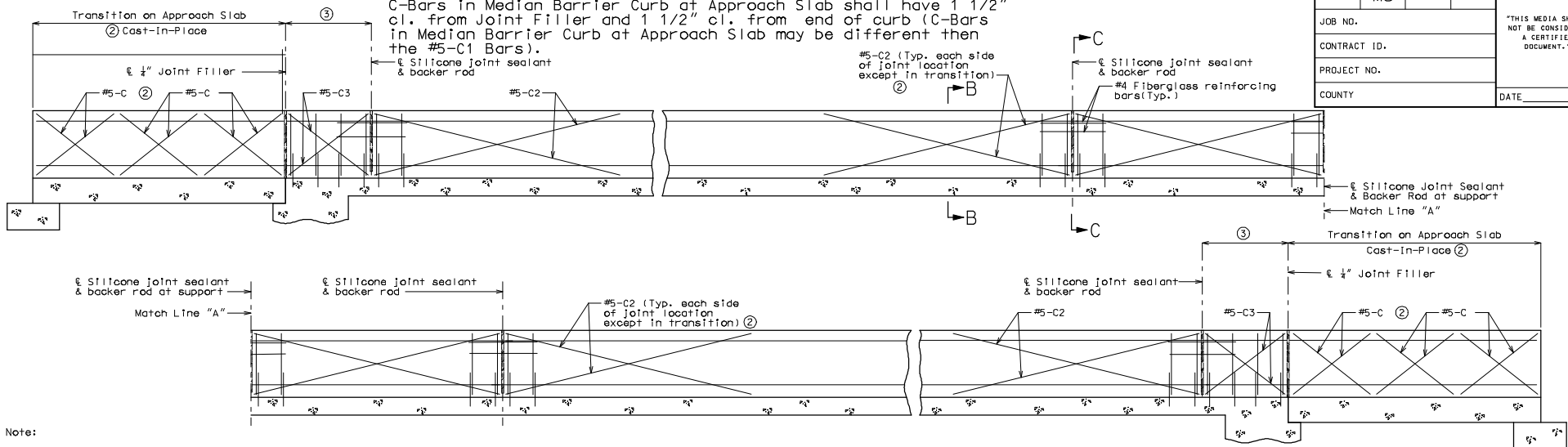


ROUTE	STATE	DISTRICT	SHEET NO.	"THIS MEDIA SHOULD NOT BE CONSIDERED A CERTIFIED DOCUMENT." DATE
	MO			
JOB NO.				
CONTRACT ID.				
PROJECT NO.				
COUNTY				

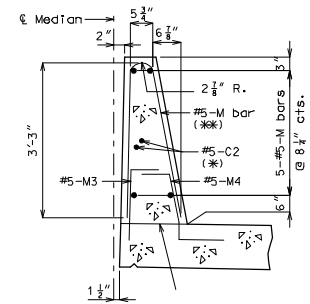
NOTE TO DETAILER:
 C-Bars in Median Barrier Curb at Approach Slab shall have 1 1/2" cl. from Joint Filler and 1 1/2" cl. from end of curb (C-Bars in Median Barrier Curb at Approach Slab may be different than the #5-C1 Bars).



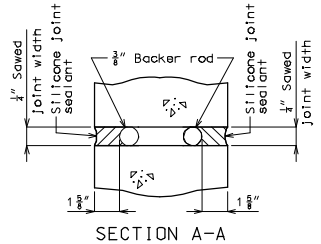
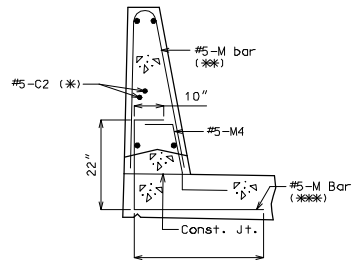
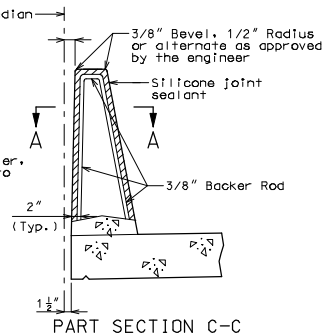
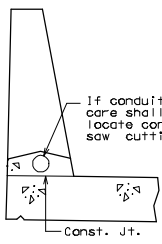
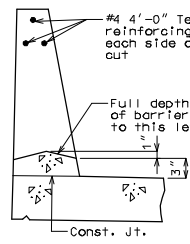
Note:
 Concrete in the Barrier Curb (Type D) shall be Class B-1.
 Top of safety median Barrier Curb (Type D) shall be built parallel to grade with barrier curb joints (except at end bent normal to grade).
 Payment for all concrete and reinforcement, complete-in-place will be considered completely covered by the contract unit price for barrier curb (Type D) per linear foot.
 Measurement of safety barrier curb (Type D) is to the nearest linear foot for each structure, measured along the outside top of slab from end of slab to end of slab to of sleeper slab.

TYPICAL ELEVATION OF AT SUPPORT LOCATIONS

Note:
 Joint sealant and backer rods shall be used on all slip-form barrier curbs instead of joint filler and shall be in accordance with sec 717 for silicone joint sealant for saw cut and formed joints.
 Plastic waterstop shall not be used with slip-form option.
 C Bars (slip-form option only) shall be used in addition to cast-in-place conventional forming reinforcement for bridge barrier curb (Type D).
 For Slip-Form Option, all sides of the barrier curb (Type D) shall have a vertically broomed finish and the curb top shall have a transversely broomed finish.
 Concrete traffic barrier delineators shall be placed on top of the safety median barrier curb (Type D) as shown on Missouri Standard Plans 617.10 and in accordance with Sec 617. Concrete traffic barrier delineators will be considered completely covered by the contract unit price for "Safety Median Barrier Curb (Type D)".
 The curb shall be cured by application of Type 1-D or Type 2 Liquid Membrane-Forming Compound in accordance with Sec 1055. Surface sealing for concrete in accordance with Sec 103 is not required. Application of linned oil at the contractor's expense is permitted.



Note:
 (*) Each side of joint location, (except in transition).
 (***) The M1 and M2 bar combination may be furnished as one bar, as shown, at the contractor's option. (All dimensions are out to out.)
 (****) The M3 bar and #5 bottom transverse slab bar in cantilever (P/S panels only) combination may be furnished as one bar as shown, at the contractor's option.



OPTIONAL SLIP-FORM BARRIER CURB (TYPE D) ①

Note:
 Cost of silicone joint sealant and backer rod, complete-in-place, will be considered completely covered by the contract unit price for barrier curb (Type D).

Detailed Checked

Note: This drawing is not to scale. Follow dimensions.

Sheet No. of

MBC02

IF A SEAL IS PRESENT ON THIS SHEET IT HAS BEEN ELECTRONICALLY SEALED AND DATED.