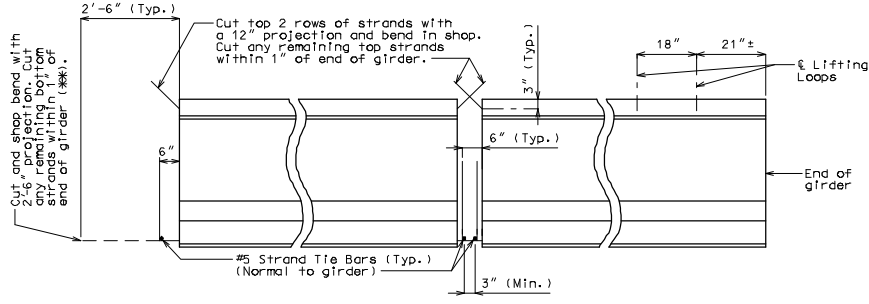
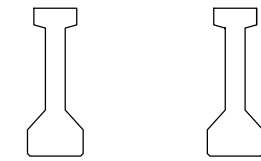


GIRDER DIMENSIONS

END OF GIRDER STRAND ARRANGEMENTS



INTERMEDIATE BENT STRAND DETAILS AT GIRDER ENDS

LOCATION OF LIFTING LOOPS

Concrete for prestressed girders shall be Class A-1 with $f'c =$ psi and $f'c =$ psi.

(+) Indicates prestressing strand.

Use strands with an initial prestress force of kips.

Prestressing tendons shall be uncoated, seven-wire, low-relaxation strands, 1/2 inch diameter in accordance with AASHTO M 203, Grade 270. Prestensioned members shall be in accordance with Sec 1029.

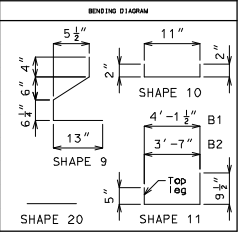
At the contractor's option the location for bent-up strands may be varied from that shown. The total number of bent-up strands shall not be changed. One strand tie bar is required for each layer of bent-up strands except at end bents which require one bar on the bottom layer of strands only. No additional payment will be made if additional strand tie bars are required.

At contractor's option a 1 1/2" to 1 3/4" smooth finish strip is permitted to facilitate placement of preformed fiber expansion joint material or expanded or extruded polystyrene bedding material for the prestressed panels.

ROUTE	STATE	DISTRICT	SHEET NO.
	MO		
JOB NO.			
CONTRACT ID.			
PROJECT NO.			
COUNTY			
			DATE

"THIS MEDIA SHOULD NOT BE CONSIDERED A CERTIFIED DOCUMENT."

BILL OF REINFORCING STEEL - EACH GIRDER				
NO.	SIZE & MARK	ACTUAL LENGTH	SHAPE	
XXX	X A1	XX'-XX"	20	
XXX	X B1	5'-2"	11	
16	6 B2	4'-7"	11	
XXX	4 C1	13"	10	
XXX	4 D1	2'-7"	9	



All dimensions are out to out.

Hooks and bents shall be in accordance with the CRSI Manual of Standard Practice for Detailing Reinforced Concrete Structures, Stirrup and Tie Dimensions.

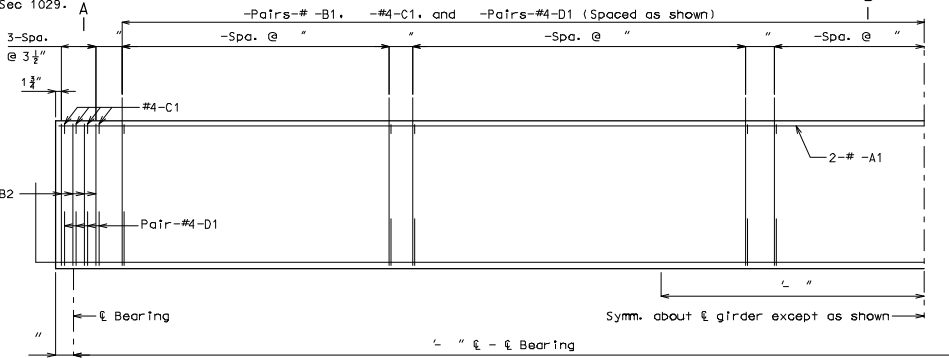
Actual lengths are measured along centerline of bar to the nearest inch.

Minimum clearance to reinforcing shall be 1".

All reinforcement shall be Grade 60.

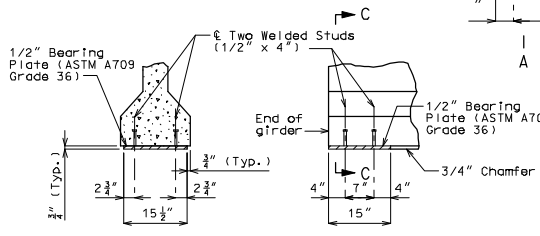
The two D1 bars may be furnished as one bar at the fabricator's option.

All B1 bars shall be epoxy coated.

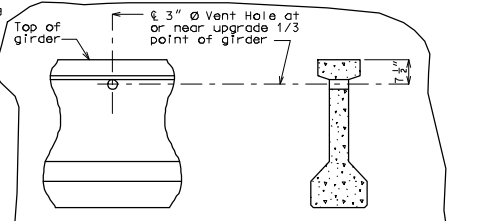


HALF ELEVATION OF GIRDER SPAN (-)

Exterior and interior girders are the same, except for coil ties, and coil inserts for slab drains and holes for steel intermediate diaphragms.

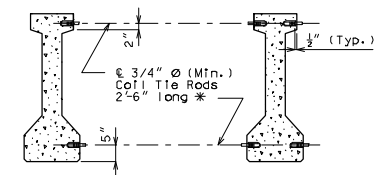


SECTION C-C PART ELEVATION AT END OF GIRDER



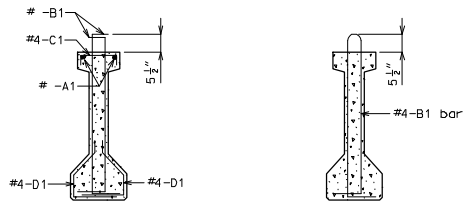
PART ELEVATION OF GIRDER PART SECTION NEAR VENT HOLE

Place vent holes at or near upgrade 1/3 point of girders and clear reinforcing steel or strands by 1 1/2" minimum and steel intermediate diaphragm bolt connections by 6" minimum.



EXTERIOR GIRDERS AT INT. BENTS EXTERIOR GIRDERS AT END BENTS INTERIOR GIRDERS AT ALL BENTS

DETAILS OF COIL TIES



SECTION B-B B1 BAR PERMISSIBLE ALTERNATE SHAPE

Cost of 3/4" diameter coil tie rods placed in diaphragms will be considered completely covered by the contract unit price for Prestressed Concrete I-Girder.

Coil ties shall be held in place in the forms by slotted wire-setting-studs projecting through forms. Studs are to be left in place or replaced with temporary plugs until girders are erected, then replaced by coil tie rods.

For location of coil inserts at slab drains, see Sheet No. .

For location of coil ties, see Sheets No. & .

The 1 1/2" diameter holes shall be cast in the web for steel intermediate diaphragms. Drilling is not allowed.

For details of diaphragms, see Sheet No. .

For Girder Camber Diagram, see Sheet No. .

* Length of coil tie rods at exterior girders at end bents = ".

Detailed Checked

Note: This drawing is not to scale. Follow dimensions.

Sheet No. of

GDR 3