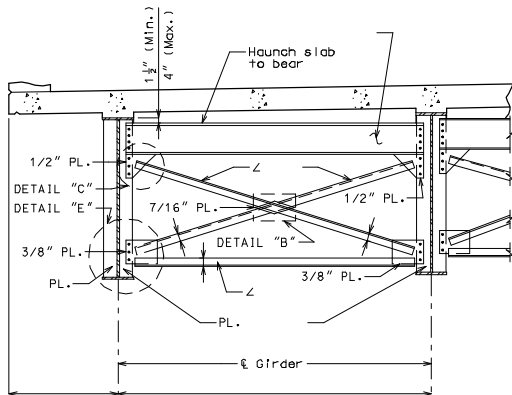
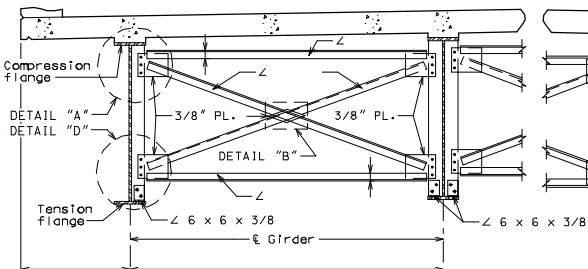


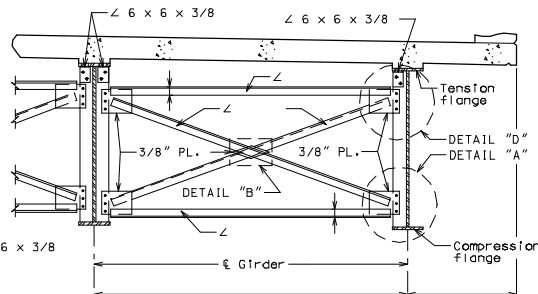
ROUTE	STATE	DISTRICT	SHEET NO.	"THIS MEDIA SHOULD NOT BE CONSIDERED A CERTIFIED DOCUMENT." DATE _____
	MO			
JOB NO.				
CONTRACT ID.				
PROJECT NO.				
COUNTY				



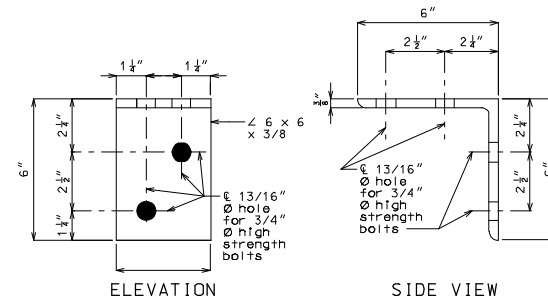
TYPICAL PART SECTION SHOWING END DIAPHRAGMS



TYPICAL PART SECTION SHOWING INTERMEDIATE DIAPHRAGMS BOTTOM FLANGE IN TENSION

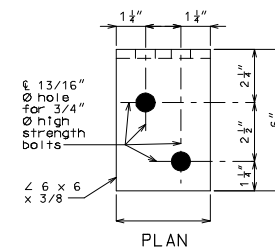


TYPICAL PART SECTION SHOWING CROSS FRAMES AND INTERMEDIATE DIAPHRAGMS TOP FLANGE IN TENSION



ELEVATION

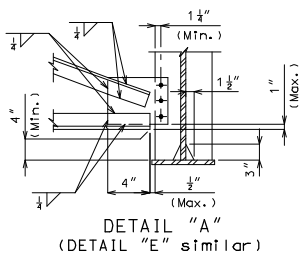
SIDE VIEW



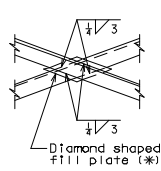
PLAN

DETAIL OF FLANGE CONNECTION ANGLE

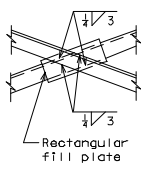
Note: The two 3/4" \varnothing H.S. bolts that connect the 6 x 6 x 3/8 angle to the top flange shall be placed so the nut is on the inside of flange (toward the web).



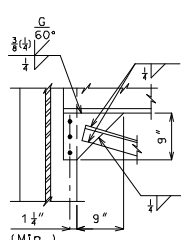
DETAIL "A"
(DETAIL "E" similar)



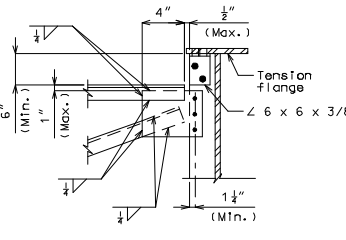
DETAIL "B"



OPTIONAL
DETAIL "B"



DETAIL "C"



DETAIL "D"

(*): At the contractor's option, rectangular fill plates may be used in lieu of diamond fill plates as shown in Optional Detail "B".

Note to Detailer:

Check with Designer to verify use of Flange Connection Angles, if they are not needed turn the Bridge-Miscellaneous level off.

IF A SEAL IS PRESENT ON THIS SHEET IT HAS BEEN ELECTRONICALLY SEALED AND DATED.