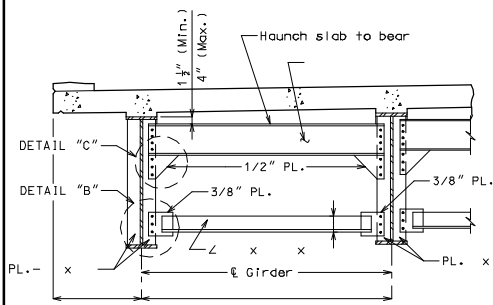
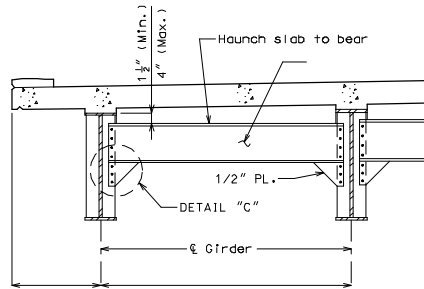


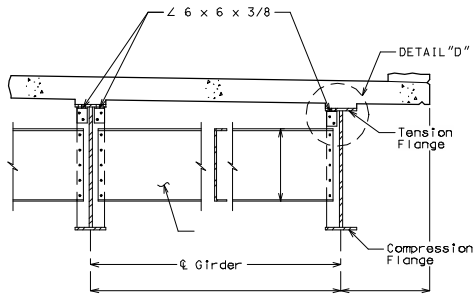
ROUTE	STATE	DISTRICT	SHEET NO.	*THIS MEDIA SHOULD NOT BE CONSIDERED A CERTIFIED DOCUMENT.* DATE _____
	MO			
JOB NO.				
CONTRACT ID.				
PROJECT NO.				
COUNTY				



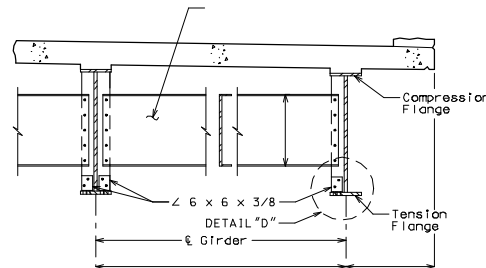
TYPICAL PART SECTION SHOWING END DIAPHRAGMS



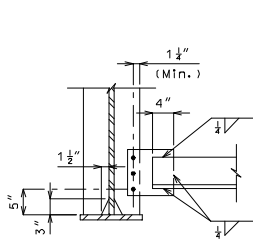
TYPICAL PART SECTION SHOWING END DIAPHRAGMS



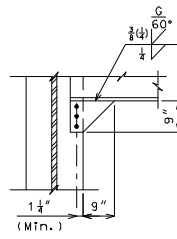
TYPICAL PART SECTION SHOWING CROSS FRAMES AND INTERMEDIATE DIAPHRAGMS TOP FLANGE IN TENSION



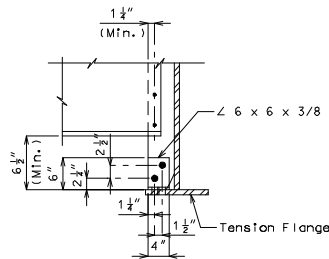
TYPICAL PART SECTION SHOWING INTERMEDIATE DIAPHRAGMS BOTTOM FLANGE IN TENSION



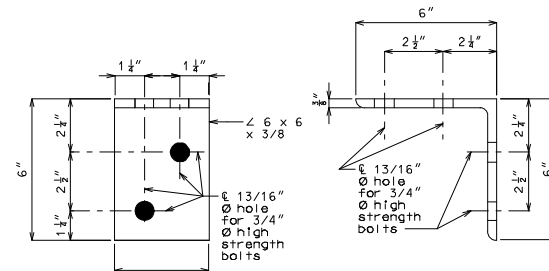
DETAIL "B"



DETAIL "C"

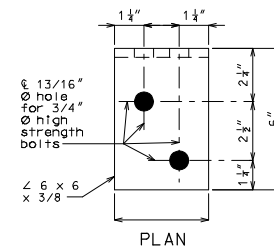


DETAIL "D"



ELEVATION

SIDE VIEW



PLAN

Note: The two 3/4" \varnothing H.S. bolts that connect the 6 x 6 x 3/8 angle to the top flange shall be placed so the nut is on the inside of flange (toward the web).

DETAIL OF FLANGE CONNECTION ANGLE

Note to Detailer:

Check with Designer to verify use of Flange Connection Angles, if they are not needed turn the Bridge-Miscellaneous level off.

IF A SEAL IS PRESENT ON THIS SHEET IT HAS BEEN ELECTRONICALLY SEALED AND DATED.