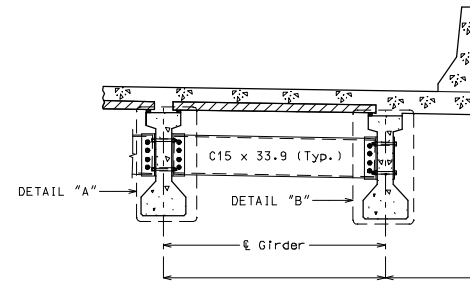


ROUTE	STATE	DISTRICT	SHEET NO.
	MO		
JOB NO.			
CONTRACT ID.			
PROJECT NO.			
COUNTY			DATE

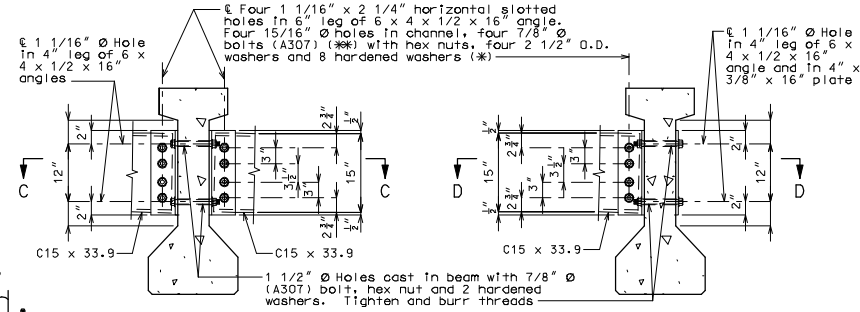
"THIS MEDIA SHOULD NOT BE CONSIDERED A CERTIFIED DOCUMENT."



PART SECTION SHOWING INTERMEDIATE DIAPHRAGMS

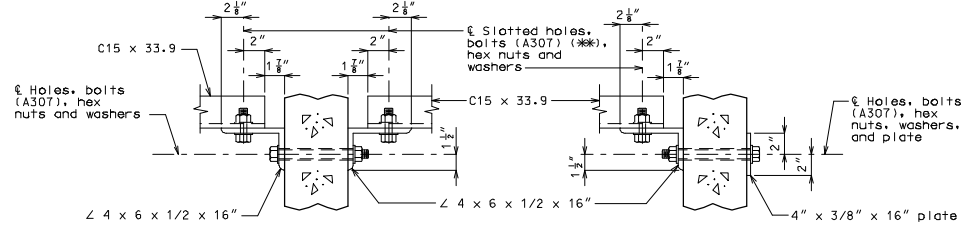
Note to Detailer:

Check that the 1 1/2"Ø holes for the diaphragms shown on the design plans will provide a minimum clearance of at least 1 1/2" to any prestressing strands. Diaphragm spacing may need to be adjusted.



DETAIL "A"

DETAIL "B"



SECTION C-C

SECTION D-D

STEEL DIAPHRAGM NOTES:

- (*) In lieu of 2 1/2" outside diameter washers, contractor may substitute a 3/16" (Min. thickness) plate with four 15/16" Ø holes and one hardened washer per bolt.
- (**) Bolts shall be tightened to provide a tension of one-half that specified in Sec T12 for high strength bolt installation. A325 bolts may be substituted for and installed in accordance with the requirements for the specified A307 bolts.
- All diaphragm materials including bolts, nuts, and washers shall be galvanized.
- Fabricated structural steel shall be ASTM A709 Grade 36 except as noted.
- Payment for furnishing and installing steel intermediate diaphragms will be considered completely covered by the contract unit price for Steel Intermediate Diaphragm for P/S Concrete Girders.

STEEL INTERMEDIATE DIAPHRAGM DETAILS

Shop drawings will not be required for steel intermediate diaphragms and angle connections. For location of intermediate diaphragms, see Sheet No. .

Detailed Checked

Note: This drawing is not to scale. Follow dimensions.

Sheet No. of

DIA 6

IF A SEAL IS PRESENT ON THIS SHEET IT HAS BEEN ELECTRONICALLY SEALED AND DATED.