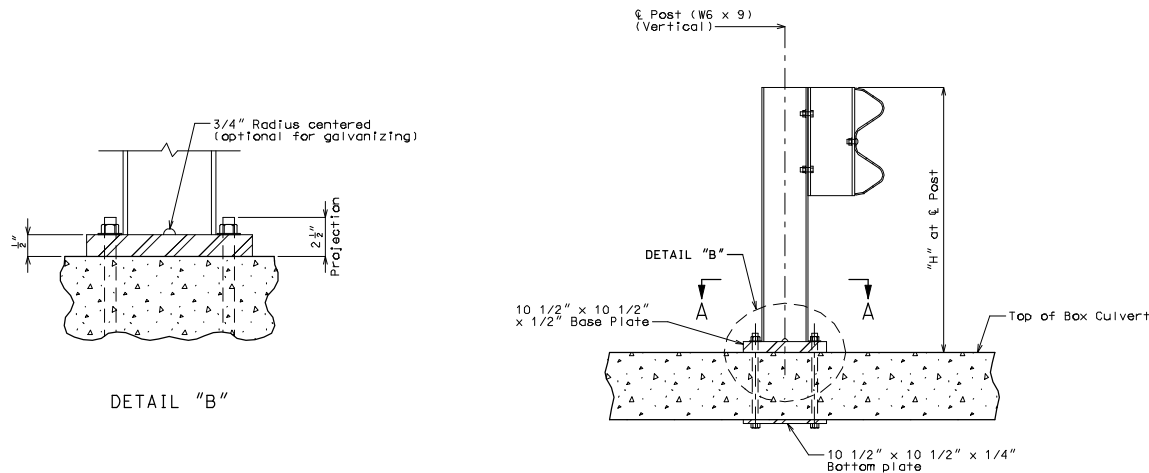
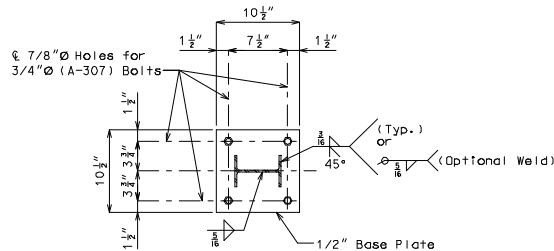


ROUTE	STATE	DISTRICT	SHEET NO.	"THIS MEDIA SHOULD NOT BE CONSIDERED A CERTIFIED DOCUMENT."  DATE _____
	MO			
JOB NO.				
CONTRACT ID.				
PROJECT NO.				
COUNTY				



PART SECTION AT RAIL POST



SECTION A-A

NOTES:

All bolts, nuts, washers, and plates and elastomeric materials will be considered completely covered by the contract unit price for Bridge Guard Rail (W-Beam) Bridge Guard Rail (Thrie Beam) other items.

All steel connecting bolts and fasteners for posts and railing, and all anchor bolts, nuts, washers, and plates shall be galvanized after fabrication except for bottom plate. Protective coating and material requirement of steel railing shall be in accordance with Sec 1040.

Rail posts shall be seated on elastomeric pads having the same dimensions as the post base plate and 1/16" thickness. Such pads may be any elastomeric material, plain or fibered, having a hardness (Durometer) of 50 or above, as certified by the manufacturer. Additional pads or half pads may be used in shimming for alignment. Post heights shown will increase by the thickness of the pad.

Posts, cap rail angles, top plates, base plates, channels and channel splice plates shall be fabricated from ASTM A709 Grade 36 steel and galvanized.

Fabrication of structural steel shall be in accordance with Sec 1080.

Holes for anchor bolts shall be set with suitable templates in exact position and securely fixed to prevent displacement, or at the contractor's option the holes may be drilled.

Grade A321 threaded rods with 2 hex nuts and washers may be substituted for the A307 anchor bolts.

See slab sheet for rail post spacing.

See Missouri Standard Plans drawing 606.00 for details not shown.

IF A SEAL IS PRESENT ON THIS SHEET IT HAS BEEN ELECTRONICALLY SEALED AND DATED.