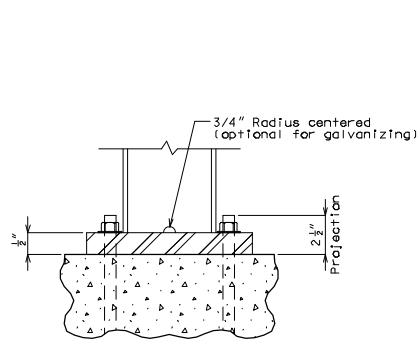
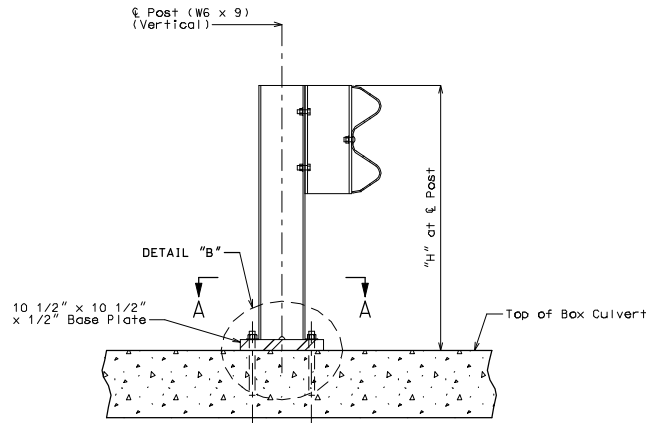


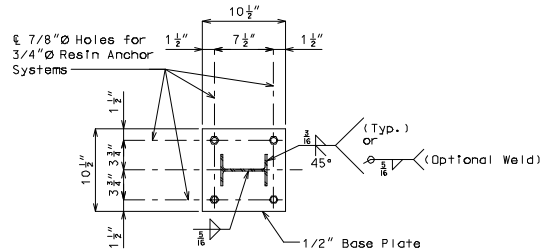
ROUTE	STATE	DISTRICT	SHEET NO.	"THIS MEDIA SHOULD NOT BE CONSIDERED A CERTIFIED DOCUMENT." DATE _____
	MO			
JOB NO.				
CONTRACT ID.				
PROJECT NO.				
COUNTY				



DETAIL "B"



PART SECTION AT RAIL POST



SECTION A-A

NOTES:

All bolts, nuts, washers, and plates and elastomeric materials will be considered completely covered by the contract unit price for Bridge Guard Rail (W-Beam) Bridge Guard Rail (Thrie Beam) other items.

All steel connecting bolts and fasteners for posts and railing, and all anchor bolts, nuts, washers, and plates shall be galvanized after fabrication except for bottom plate. Protective coating and material requirement of steel railing shall be in accordance with Sec 1040.

Rail posts shall be seated on elastomeric pads having the same dimensions as the post base plate and 1/16" thickness. Such pads may be any elastomeric material, plain or fibered, having a hardness (Durometer) of 50 or above, as certified by the manufacturer. Additional pads or half pads may be used in shimming for alignment. Post heights shown will increase by the thickness of the pad.

Posts, gap rail angles, top plates, base plates, channels and channel splice plates shall be fabricated from ASTM A709 Grade 36 steel and galvanized.

Fabrication of structural steel shall be in accordance with Sec 1080.

The contractor shall use one of the qualified resin anchor systems in accordance with Sec 1039.

Cost of furnishing and installing the resin anchor systems complete-in-place will be considered completely covered by the contract unit price for _____.

The minimum embedment depth in concrete with $f'c = 4,000$ psi for the resin anchor systems shall be that required to meet the minimum ultimate pullout strength in accordance with Sec 1039 but shall not be less than 5".

See slab sheet for rail post spacing.

See Missouri Standard Plans drawing 606.00 for details not shown.

IF A SEAL IS PRESENT ON THIS SHEET IT HAS BEEN ELECTRONICALLY SEALED AND DATED.