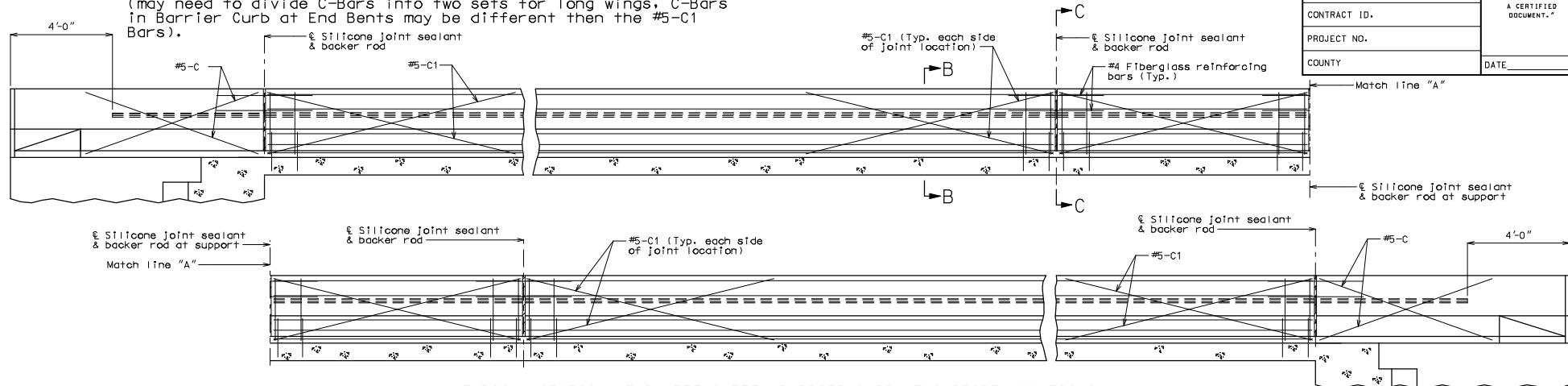


NOTE TO DETAILER:
 C-Bars in Barrier Curb at End Bents shall have 1 1/2" cl. from Silicone Joint Sealant and 1 1/2" ± cl. from start of transition (may need to divide C-Bars into two sets for long wings, C-Bars in Barrier Curb at End Bents may be different than the #5-C1 Bars).

ROUTE	STATE	DISTRICT	SHEET NO.
	MO		
JOB NO.			
CONTRACT ID.			
PROJECT NO.			
COUNTY			
			DATE

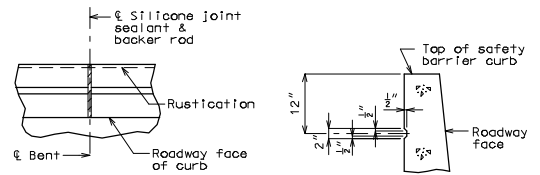
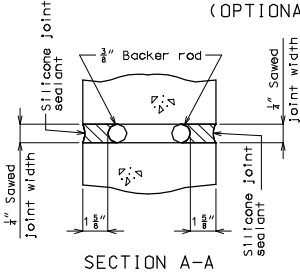
"THIS MEDIA SHOULD NOT BE CONSIDERED A CERTIFIED DOCUMENT."



Notes:
 Top of safety barrier curb shall be built parallel to grade with barrier curb joints (except at end bents) normal to grade.
 Payment for all concrete and reinforcement, complete-in-place, will be considered completely covered by the contract unit price for safety barrier curb per linear foot.
 Concrete in the safety barrier curb shall be Class B-1.
 Measurement of safety barrier curb is to the nearest linear foot for each structure, measured along the outside top of slab from end of wing to end of wing.
 The curb shall be cured by application of Type 1-D or Type 2 Liquid Membrane-Forming Compound in accordance with Sec 1055, Surface sealing for concrete in accordance with Sec 103 is not required. Application of linseed oil at the contractor's expense is permitted.

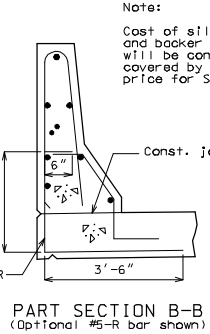
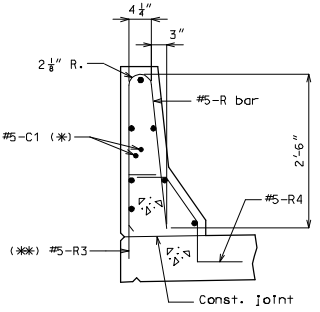
TYPICAL SECTION NEAR LEFT SAFETY BARRIER CURB AT SUPPORT LOCATIONS (OPTIONAL SLIP-FORM BRIDGE SAFETY BARRIER CURB)

Notes:
 Joint sealant and backer rods shall be used on all slip-form barrier curbs instead of joint filler and shall be in accordance with Sec 717 for silicone joint sealant for saw cut and formed joints.
 Plastic waterstop shall not be used with slip-form option.
 C Bars (Slip-form option only) shall be used in addition to cast-in-place conventional forming reinforcement for bridge safety barrier curb.
 For Slip-Form option, all sides of the safety barrier curb shall have a vertically broomed finish and the curb top shall have a transversely broomed finish.
 Concrete traffic barrier delineators shall be placed on top of the safety barrier curb as shown on Missouri Standard Plans 617.10 and in accordance with Sec 617. Concrete traffic barrier delineators will be considered completely covered by the contract unit price for "Safety Barrier Curb".



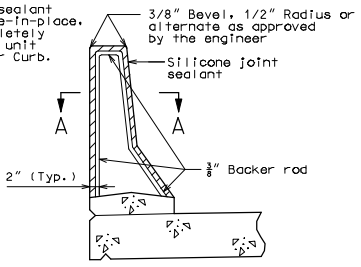
PART PLAN SHOWING SAFETY BARRIER CURB JOINT PART SECTION SHOWING RUSTICATION DETAILS

RUSTICATION DETAIL (Use on highway grade separation only)

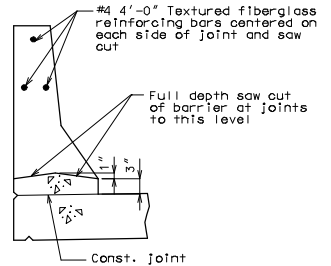


Notes:
 (*) Each side of joint location.
 (***) The R3 bar and #5 bottom transverse slab bar in cantilever (P/S panels only) combination may be furnished as one bar at the contractor's option.

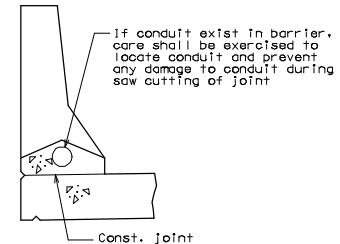
PART SECTION B-B (Optional #5-R bar shown)



SECTION THRU JOINT



PART SECTION C-C



PART SECTION C-C (Use when conduit required)

OPTIONAL SLIP-FORM BRIDGE SAFETY BARRIER CURB (Left barrier curb shown, right barrier curb similar.)

Note: This drawing is not to scale. Follow dimensions.

Sheet No. of

IF A SEAL IS PRESENT ON THIS SHEET IT HAS BEEN ELECTRONICALLY SEALED AND DATED.