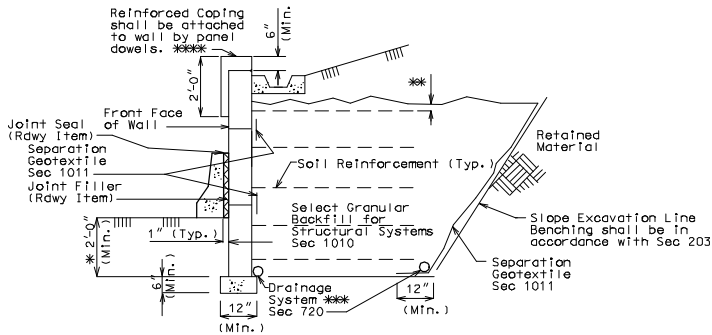
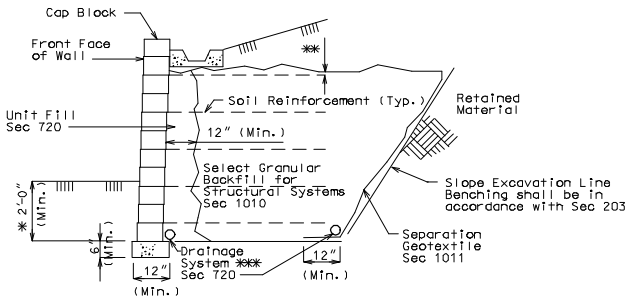


ROUTE	STATE	DISTRICT	SHEET NO.
	MO		
JOB NO.			
CONTRACT ID			
PROJECT NO.			
COUNTY			DATE



\* For minimum embedment see AASHTO 5.8.1 & Geotechnical Report.  
 \*\* Topmost layer of reinforcement shall be fully covered with select granular backfill for structural systems, as approved by the wall manufacturer, before placement of the Separation Geotextile.

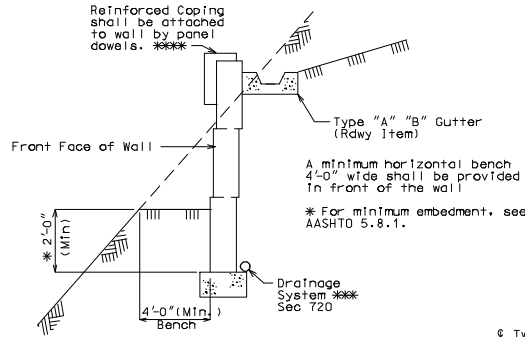
TYPICAL SECTION THRU LARGE PANEL WALL



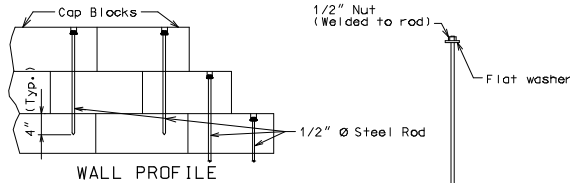
\* For minimum embedment see AASHTO 5.8.1 & Geotechnical Report.  
 \*\* Topmost layer of reinforcement shall be fully covered with select granular backfill for structural systems, as approved by the wall manufacturer, before placement of the Separation Geotextile.

TYPICAL SECTION THRU SMALL BLOCK WALL

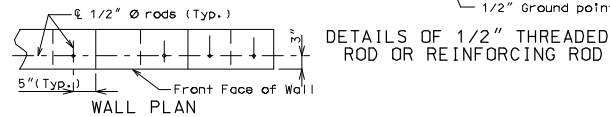
NOTE TO DETAILER:  
 All notes and details shown need to be revised per project.



TYPICAL SECTION THRU WALL



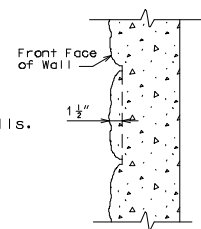
WALL PROFILE



DETAILS OF 1/2" THREADED ROD OR REINFORCING ROD  
 Note:  
 Holes shall be 5/8" round and extended 4" into the third layer of blocks, recessed 2" deep by 1 1/2" round.  
 Rods or reinforcing bars shall be secured by an approved resin anchor system in accordance with Sec 1039.  
 Recess hole shall be backfilled with non-shrink cement grout.

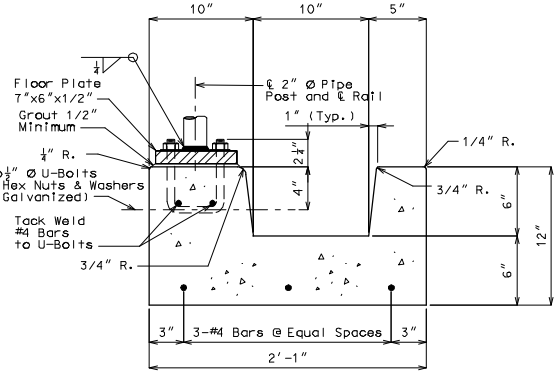
\*\*\* Adjustment in the vertical alignment of the drainage pipes from that depicted in the plans may be necessary to ensure positive flow out of the drainage system.  
 Outlet ends of pipes shall be located to avoid clogging or flow into the drainage system.

NOTE TO DETAILER:  
 Following note does not apply to Small Block Walls.  
 \*\*\* Inverted U-shape reinforced capstone may be used in lieu of coping. Panel dowels for capstone as required by manufacturer.

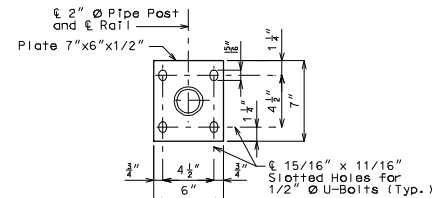


FORM LINER DETAIL

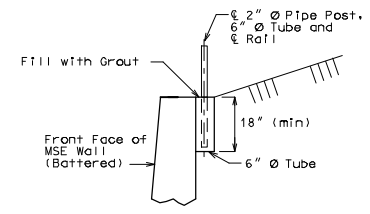
Note: All front face surfaces of M.S.E. wall shall have form liner finish.



RAIL POST CONNECTION TO MODIFIED "B" GUTTER



PLAN OF FLOOR PLATE



RAIL POST CONNECTION BEHIND WALL (WITHOUT GUTTER)