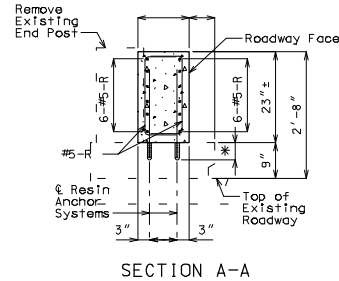
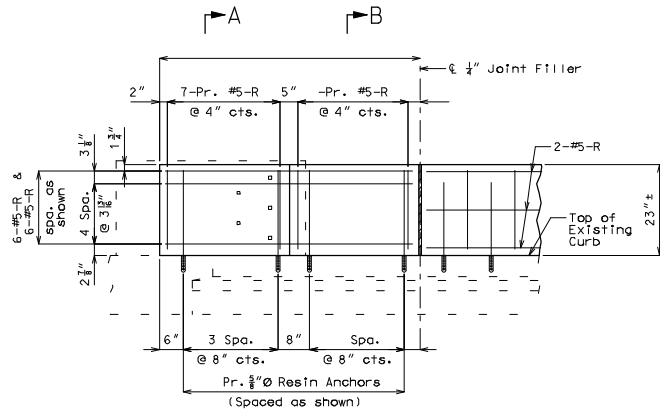
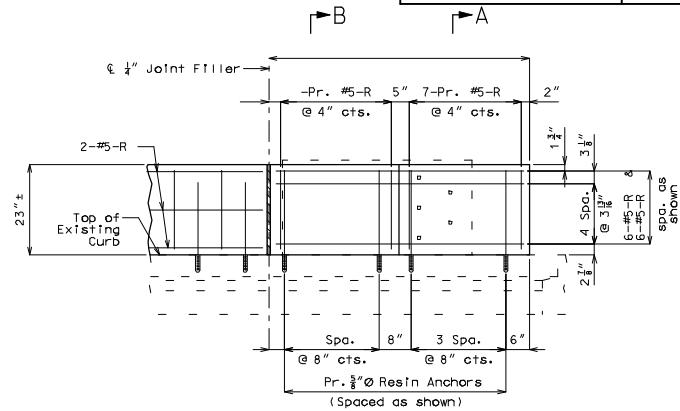


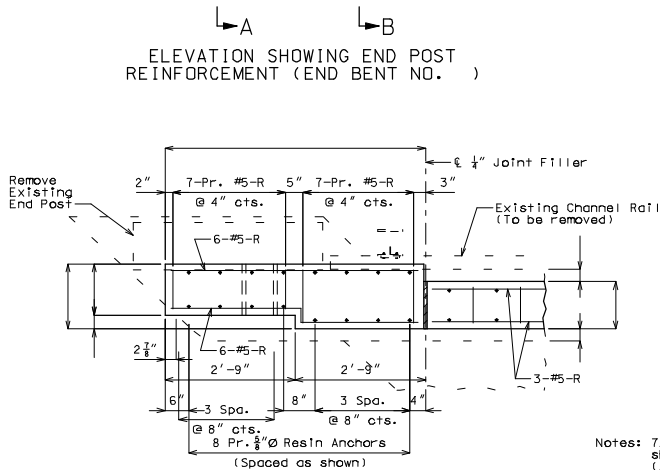
ROUTE	STATE	DISTRICT	SHEET NO.
	MO		
JOB NO.			
CONTRACT ID			
PROJECT NO.			
COUNTY			
			DATE



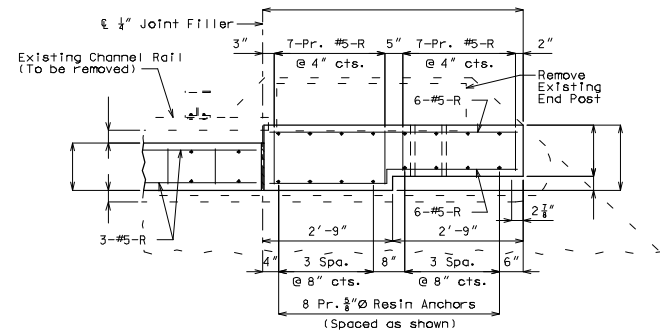
SECTION A-A



ELEVATION SHOWING END POST REINFORCEMENT (END BENT NO.)



SECTION B-B



PLAN SHOWING END POST REINFORCEMENT (END BENT NO.)

ELEVATION SHOWING END POST REINFORCEMENT (END BENT NO.)

PLAN SHOWING END POST REINFORCEMENT (END BENT NO.)

Notes: 7/8" Ø Threaded Rods with nuts and washers shall be used in place of 7/8" Ø Bolts (ASTM A307).

1" Ø holes shall be drilled through existing end post for placement of 7/8" Ø threaded rods, nuts, and washers.

For Details of Resin Anchor Systems, see sheet no. .

* Manufacturer's embedment length.

Concrete traffic barrier delineators shall be placed on top of the safety median barrier curb (Type C) (Type D) as shown on Missouri Standard Plans 617.10 and in accordance with Sec 617. Concrete traffic barrier delineators will be considered completely covered by the contract unit price for "Safety Median Barrier Curb (Type C) (Type D)".

DETAILS OF CURB BLOCKOUT AT END BENTS

Detailed Checked

Note: This drawing is not to scale. Follow dimensions.

Sheet No. of

CBO-02