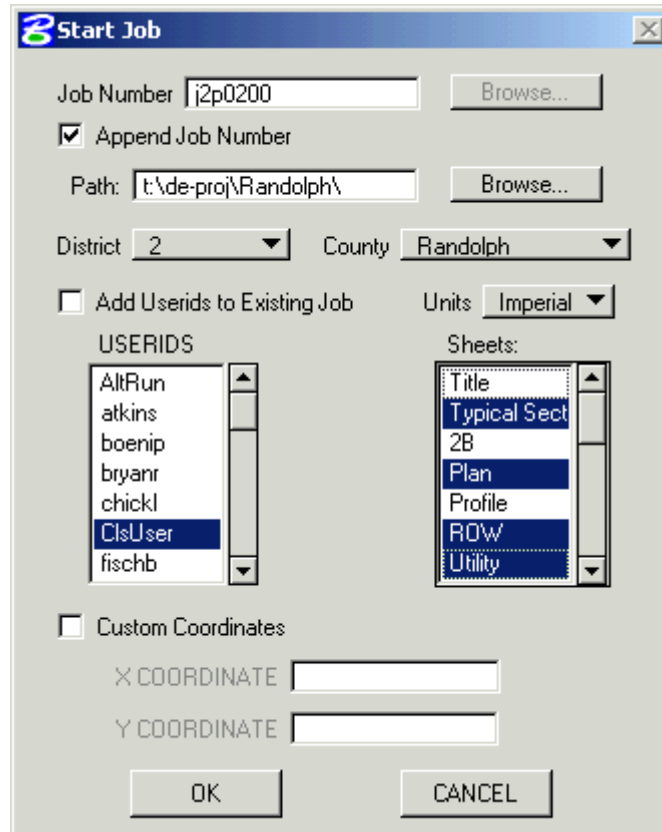


Exercise 2-2

1. Open any MicroStation file.

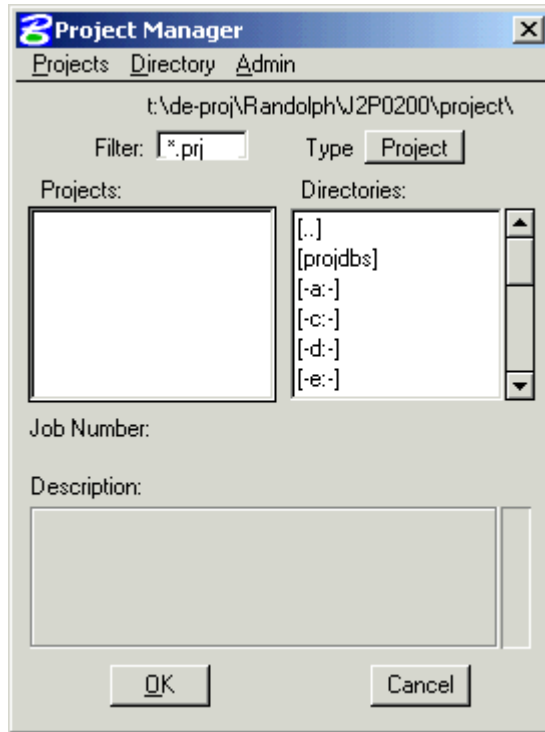
2. Create the following job with the **Start Job** dialog (MicroStation menu **MoDOT > Start Geopak Job/Add User**).



3. Review the directory structure and the files created in the directory.

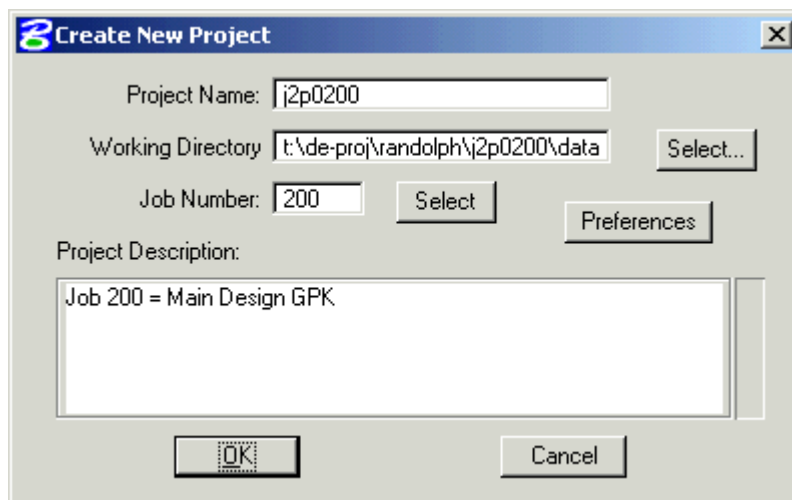
4. Use the **Project Manager** dialog to create the following project using the steps shown:

Navigate to the directory **t:\de-proj\Randolph\J2P0200\project**

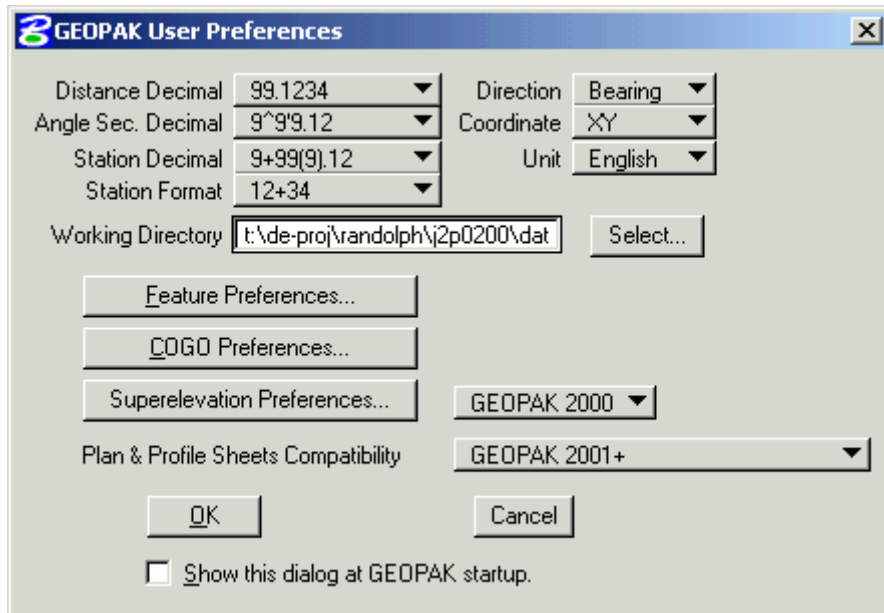


Choose **Projects > New**

Project name: J2P0200
 Working Directory: t:\de-proj\randolph\j2p0200\data
 Job Number: 200



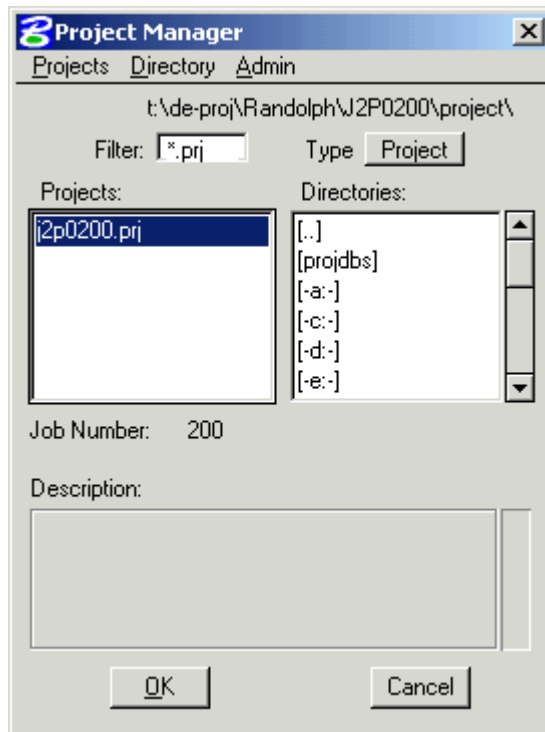
4. (Continued) Click on **Preferences** and set them as shown below.



When the dialog is set as shown above, click **OK**.

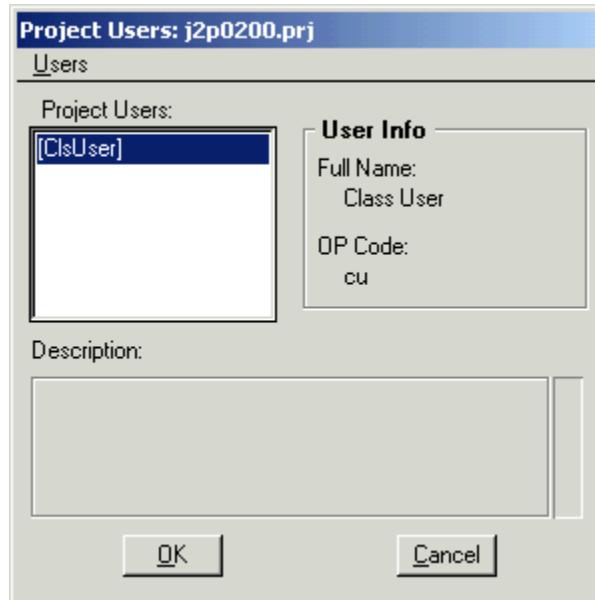
Click **OK** in the Create New Project dialog and click **Yes** to create Job 200.

The Project Manger dialog should now look like the one shown below.



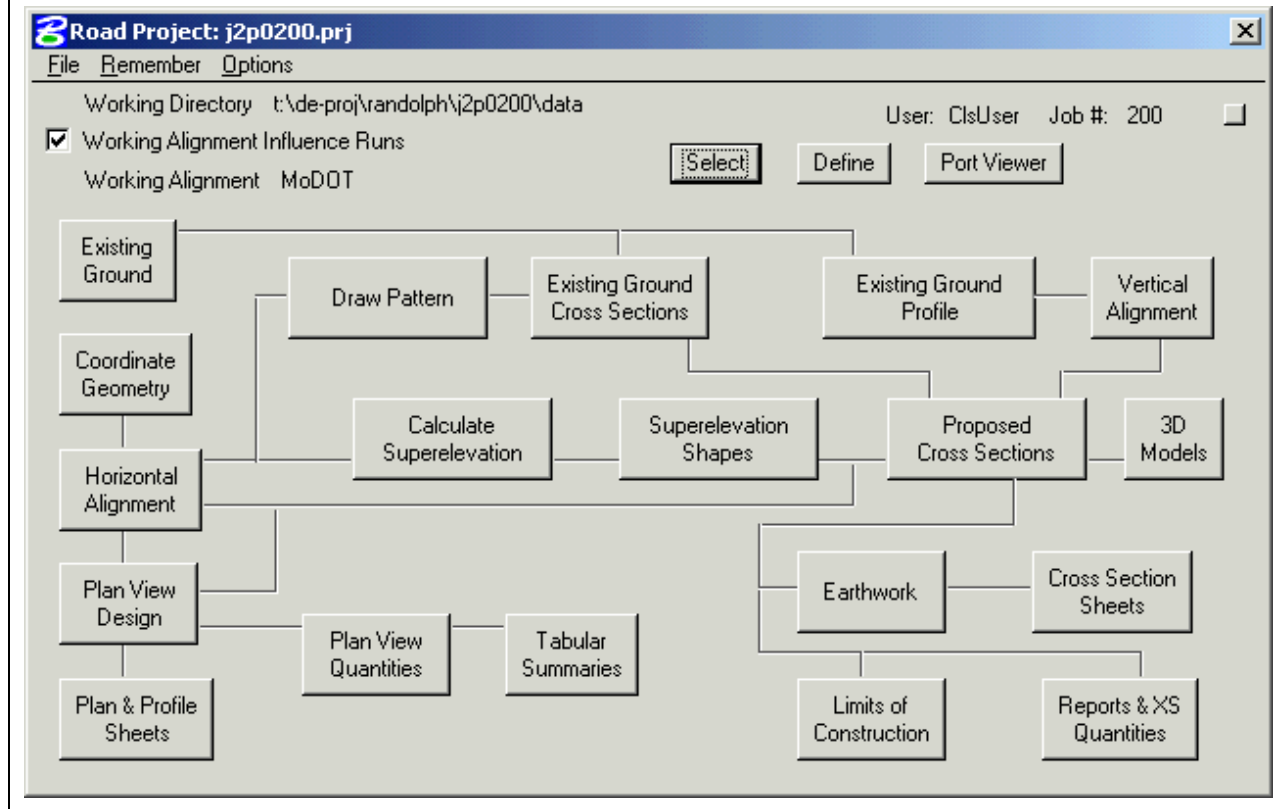
Click **OK** to enter the project.

5. Select **ClsUser** as the Project User.

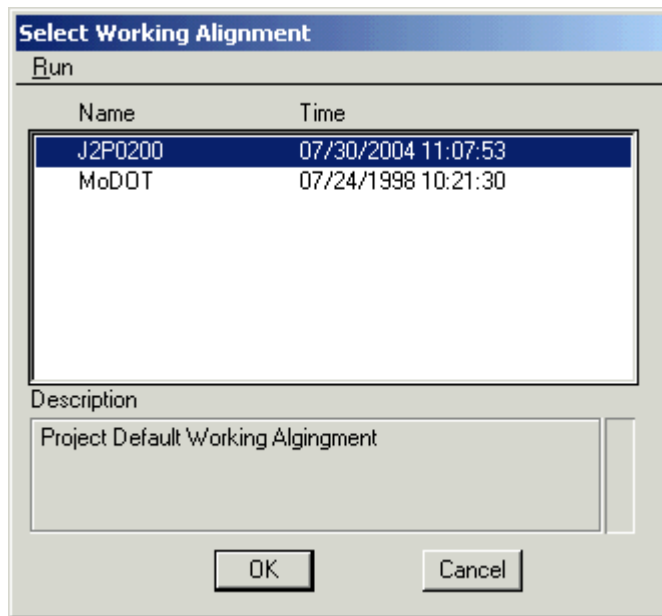
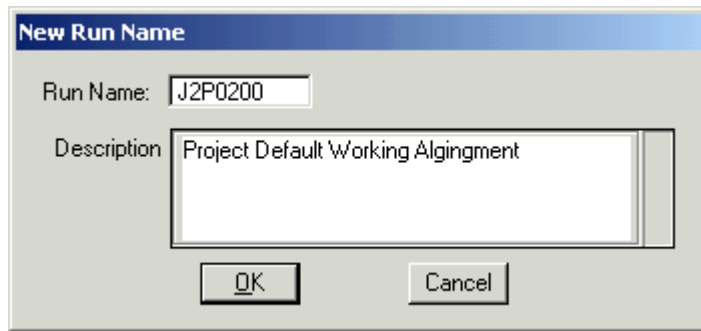


Click **OK**.

Enter **Road** and check that you have the correct information for the Working Directory, User, and Job #. Go to the Options menu and check on **Auto Sink**.



6. Create a new working alignment (**Select** button) by copying the MoDOT run and calling the new run **J2P0200**. This will be used to create a default working alignment for the project.



7. Enter the Working Alignment Definition (**Define** button) for J2P2000 and following file definitions.

<u>Section</u>	<u>Design File:</u>
Plan View	plan_j2p0200
Pattern	pattern_shape_j2p0200
Shapes	pattern_shape_j2p0200
Profile View	profile_j2p0200

Click OK to save the changes. The dialog sections with these files defined are shown on the next page.

