

MoDOT

LEGEND

| | |
|-----------------------|--|
| WATER WAYS | |
| CITY LIMITS | |
| COUNTY LINE | |
| NON-STATE ROADS | |
| LETTERED STATE ROUTE | |
| NUMBERED STATE ROUTES | |
| EXISTING US ROUTE 54 | |
| BUSINESS LOOP 54 | |
| FUTURE CONSTRUCTION | |

PROJECT LOCATION

265

270



275

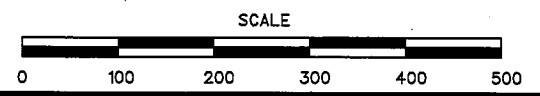
40

45

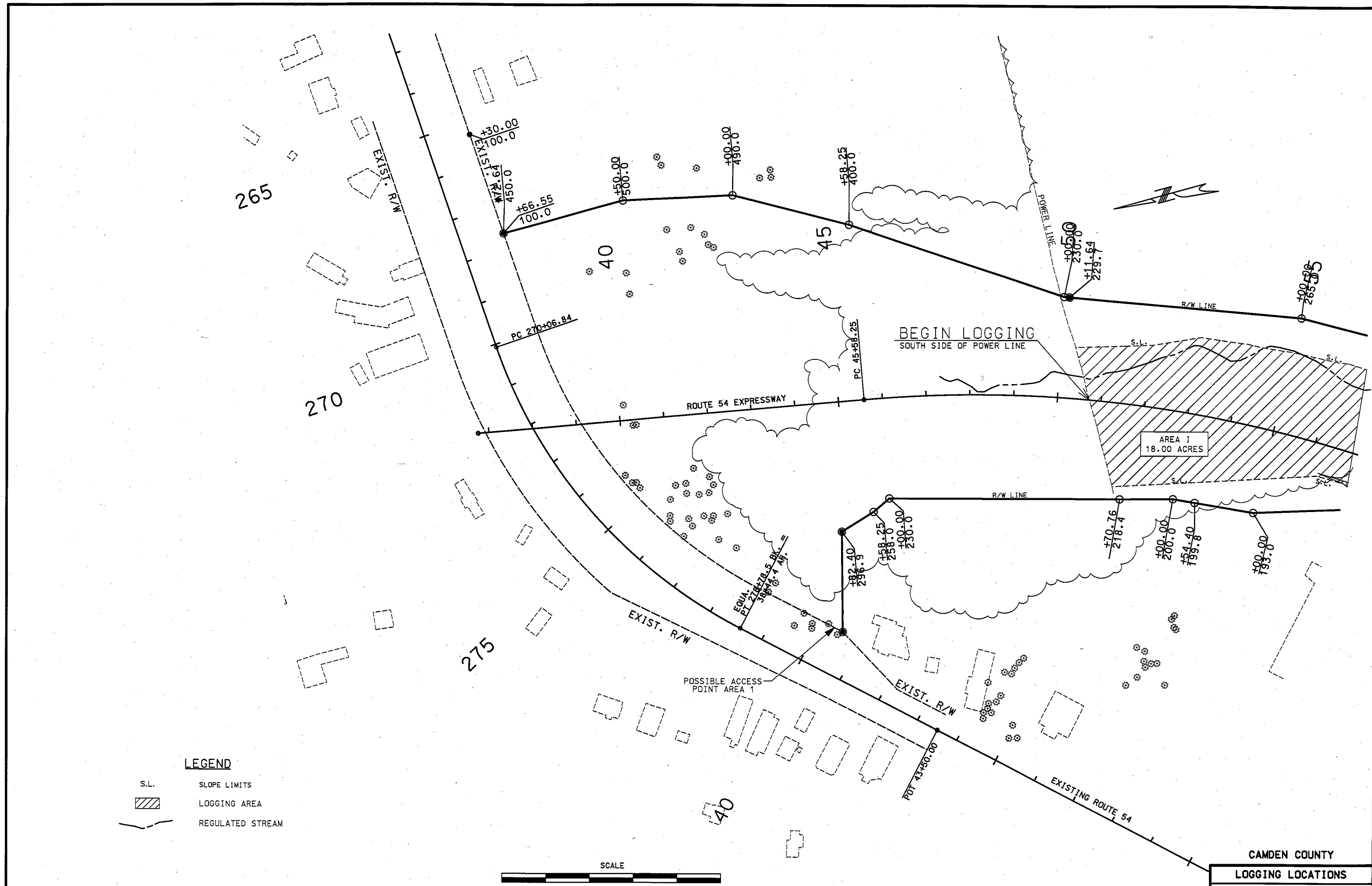
40

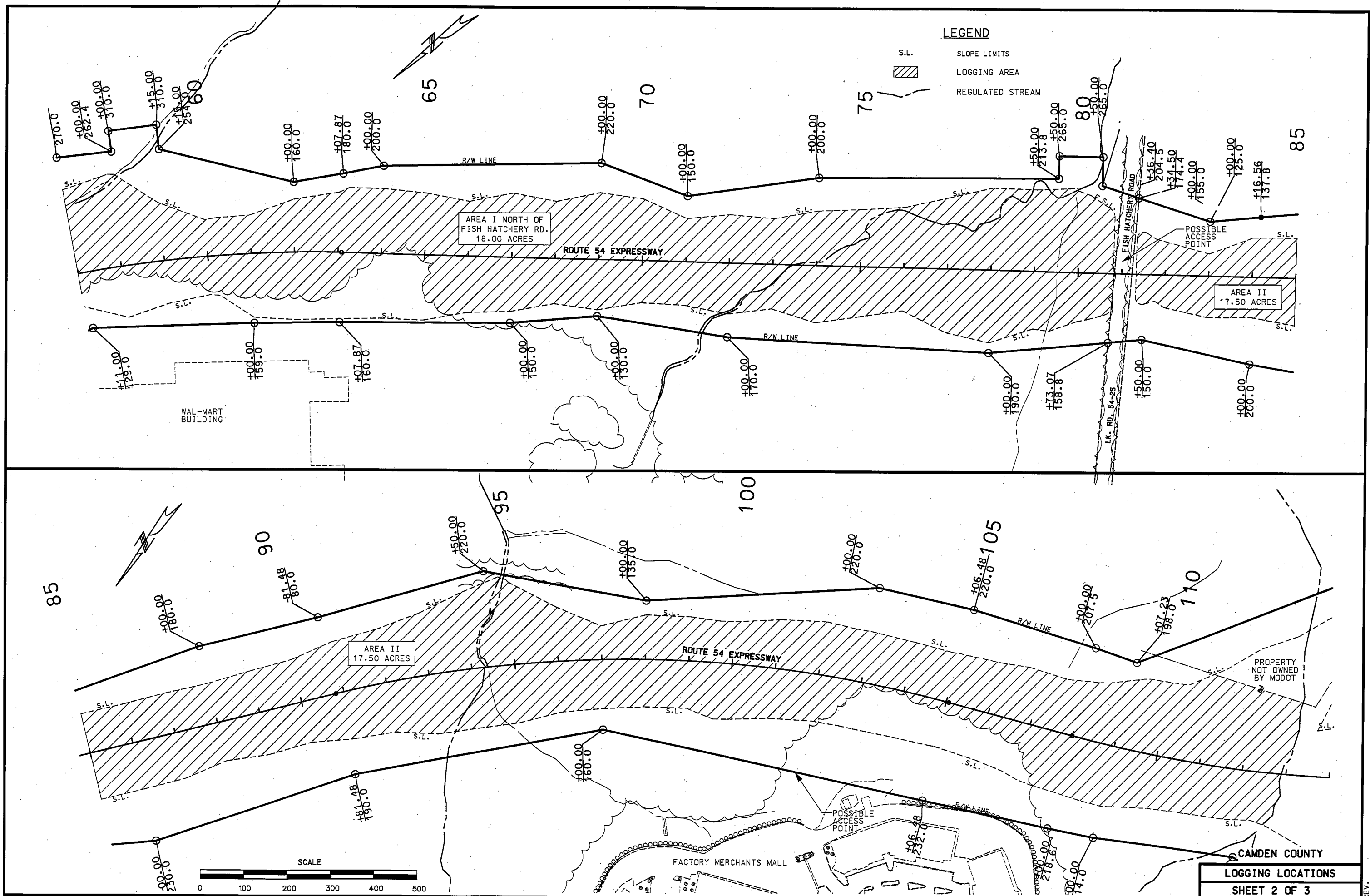
LEGEND

- S.L. SLOPE LIMITS
-  LOGGING AREA
-  REGULATED STREAM



CAMDEN COUNTY
 LOGGING LOCATIONS
 SHEET 1 OF 3





LEGEND

- S.L. SLOPE LIMITS
- LOGGING AREA
- REGULATED STREAM

AREA I NORTH OF FISH HATCHERY RD.
18.00 ACRES

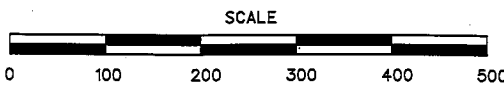
AREA II
17.50 ACRES

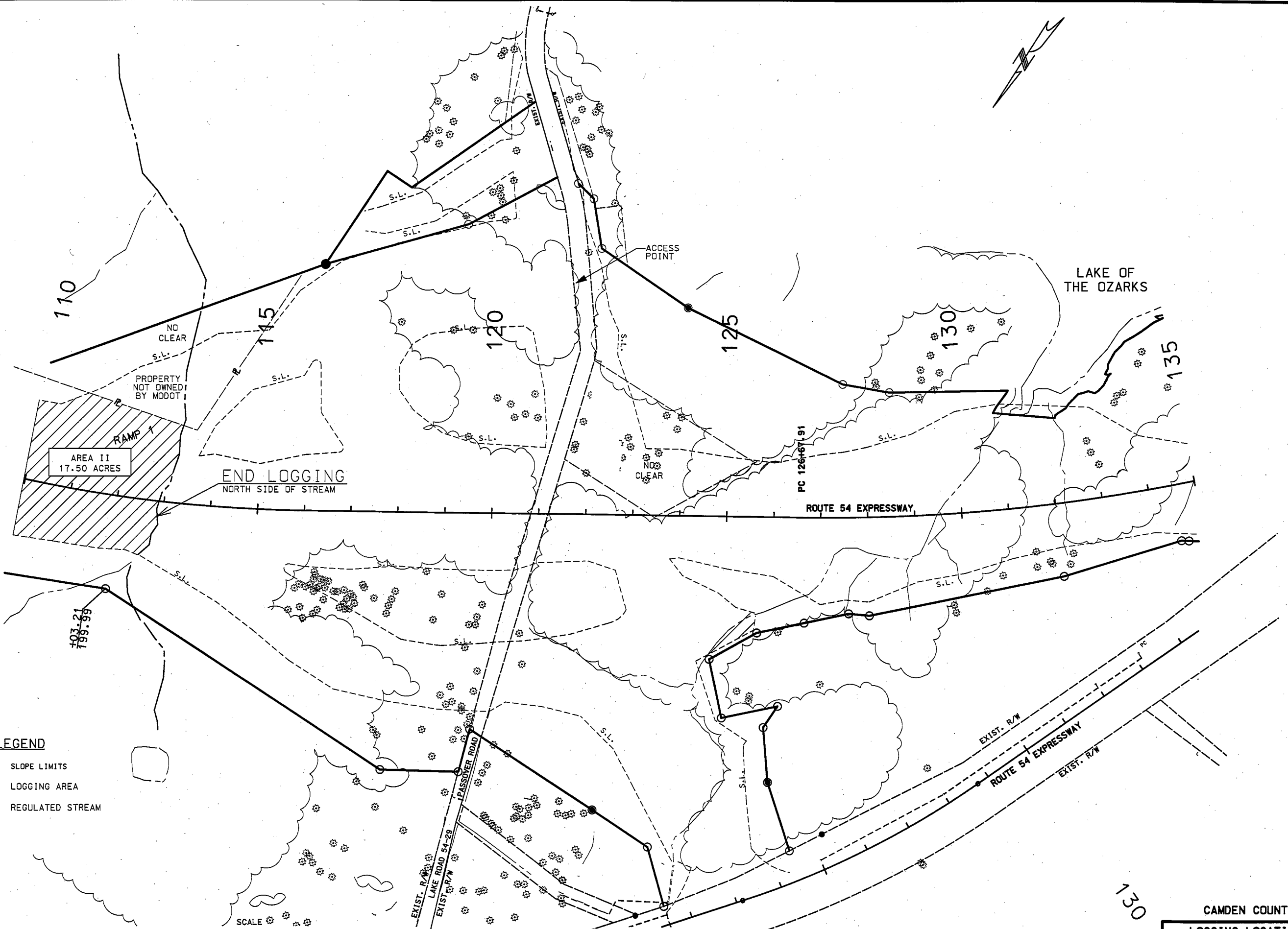
WAL-MART BUILDING

FACTORY MERCHANTS MALL

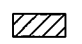

CAMDEN COUNTY

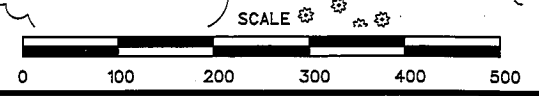
LOGGING LOCATIONS
SHEET 2 OF 3





LEGEND

- S.L. SLOPE LIMITS
-  LOGGING AREA
-  REGULATED STREAM



CAMDEN COUNTY
 LOGGING LOCATIONS
 SHEET 3 OF 3