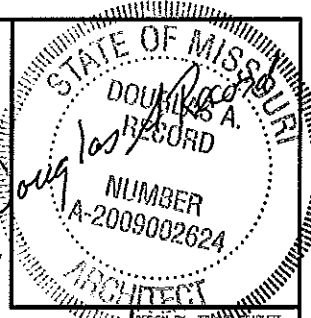


3-22-11



INDEX OF DRAWINGS

- 1-5 COVER SHEET
- 2-5 FLOOR PLAN
- 3-5 BUILDING SECTION
- 4-5 DETAILS
- 5-5 SIDEWALL ELEVATION

MISSOURI DEPARTMENT
OF TRANSPORTATION

CONCRETE BLOCK TRUCK WASH
DISTRICT #7
EL DORADO SPRINGS, MISSOURI
Route 54 1.0 Mile East of Route 32
Cedar County

CODE REQUIREMENTS

BUILDING CODE - CURRENT IBC

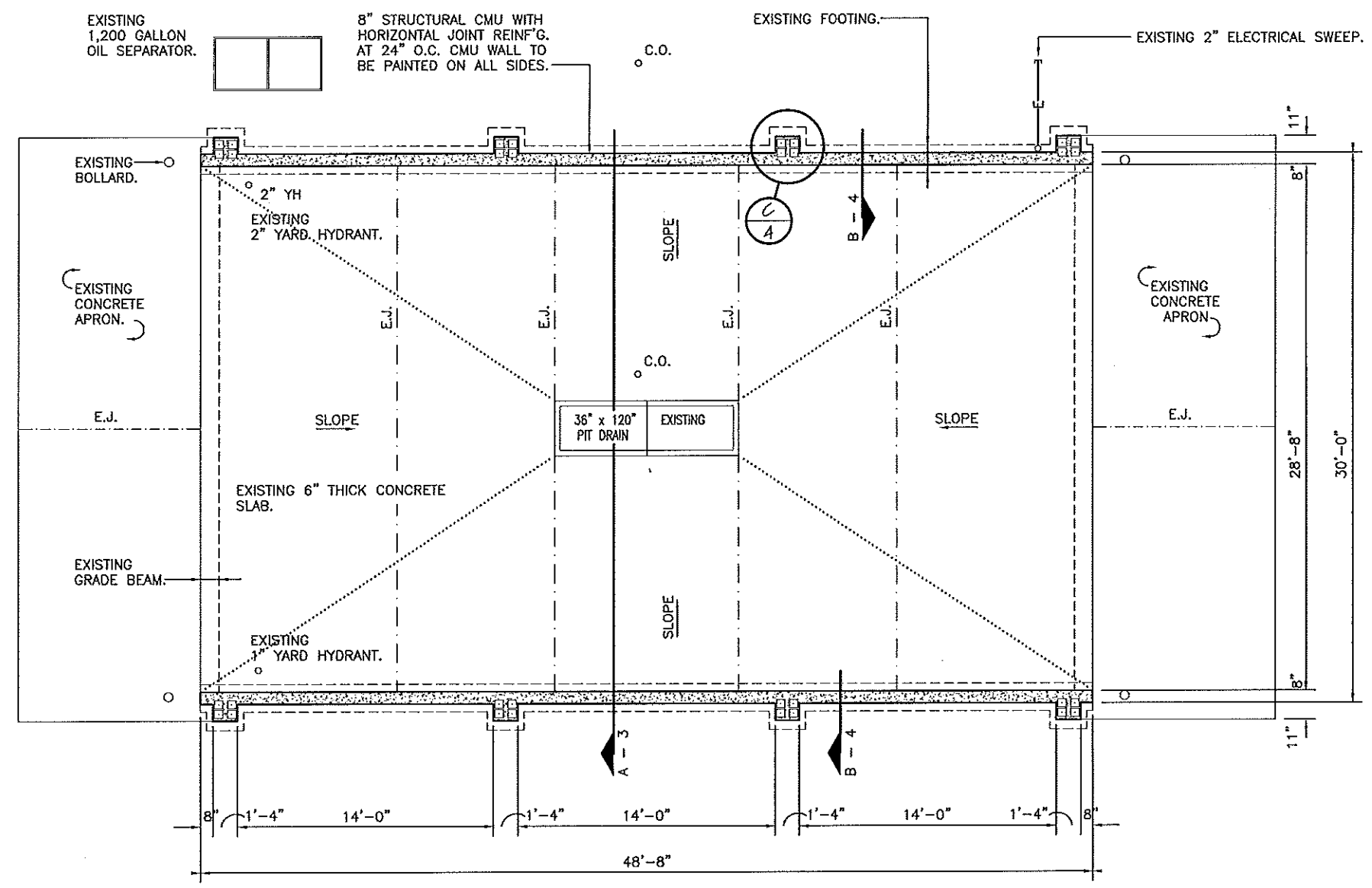
Concrete Block Truck Wash
District #7 - Cedar County
El Dorado Springs, Missouri

MISSOURI DEPARTMENT
OF TRANSPORTATION
DIVISION OF GENERAL SERVICES
FACILITIES MANAGEMENT

COVER SHEET

3.22.11

STATE OF MISSOURI
 DOUGLASS COUNTY
 RECORD
 NUMBER
 A-2009002624
 ARCHITECT



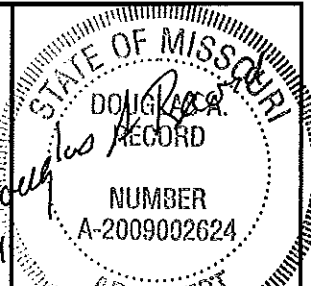
A FLOOR PLAN
 2 SCALE: 1/8" = 1'-0" N

DATE: 3-17-11
 DRAWN BY: LARRY CARVER

Concrete Block Truck Wash
 District #7 - Cedar County
 El Dorado Springs, Missouri

MISSOURI DEPARTMENT
 OF TRANSPORTATION
 DIVISION OF GENERAL SERVICES
 FACILITIES MANAGEMENT

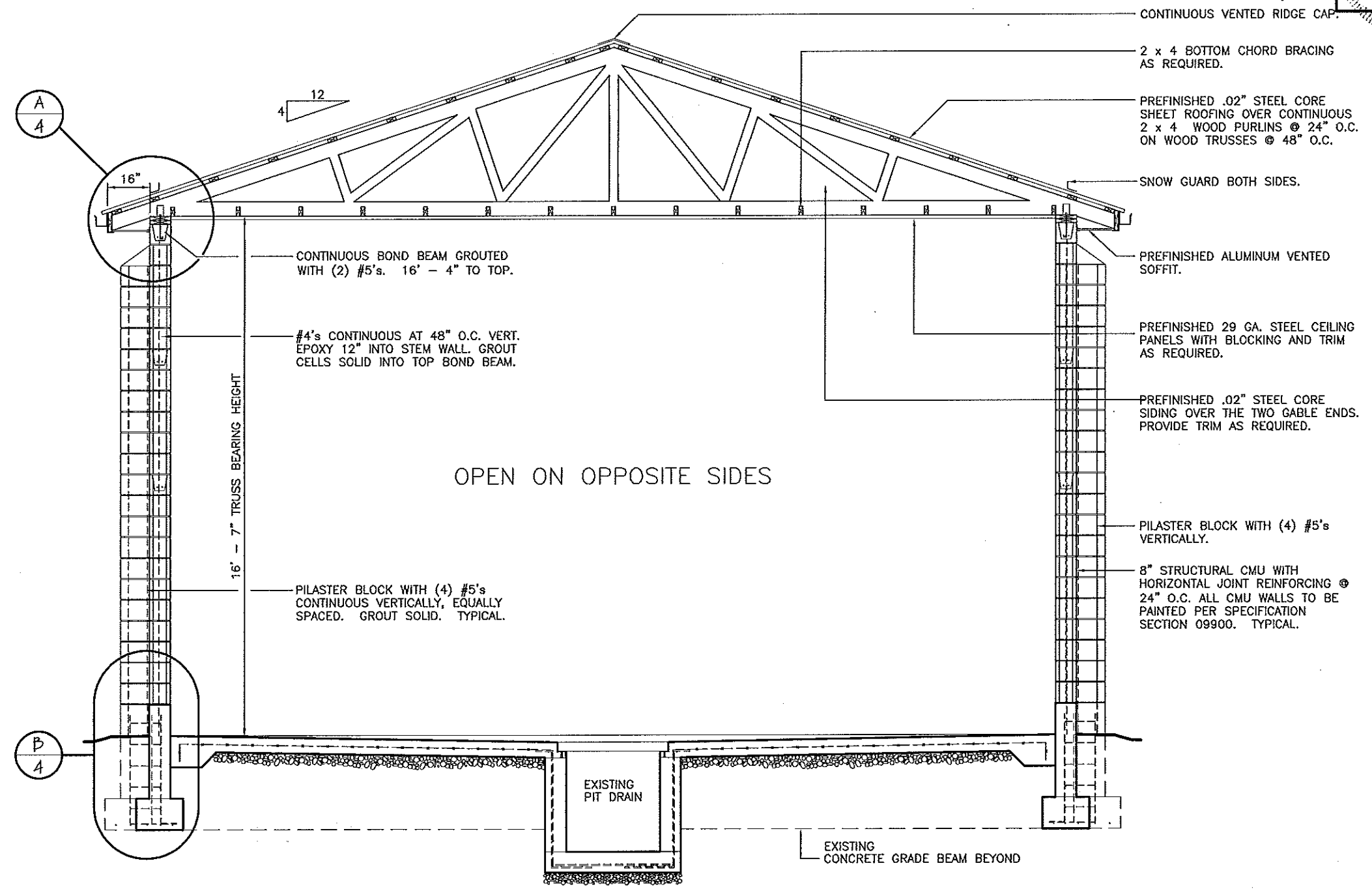
FLOOR PLAN



ENGINEERING DESIGN AND SHOP DRAWINGS:

1. PROFESSIONAL ENGINEER: ALL TRUSS DESIGNS SHALL BEAR THE NAME, SEAL, AND REGISTRATION NUMBER OF A LICENSED PROFESSIONAL ENGINEER.
2. TRUSS DESIGNS SHALL CONTAIN THE FOLLOWING DATA:
 - A. LOADING (UNIFORM)
 1. TOP CHORD
 - LIVE LOAD 20 PSF
 - DEAD LOAD 10 PSF
 - SNOW DRIFT - PER 2003 IBC
 2. BOTTOM CHORD
 - DEAD LOAD 5 PSF
 - TOTAL LOAD 35 PSF
 - B. METAL CONNECTORS - NOTE GAUGE SIZES OF CONNECTORS, NAME OF MANUFACTURER, AND CAPACITY OF EACH CONNECTION.
 - C. LUMBER SPECIFICATIONS
 - D. PITCH, SPAN, AND SPACING OF TRUSSES
 - E. DESIGN LOADINGS AND ALLOWABLE UNIT STRESS INCREASE, IF ANY
 - F. FORCE ANALYSIS OF BAR FORCES IN EACH MEMBER
 - G. SIZE AND LOCATION OF ALL CONNECTOR PLATES
 - H. TRUSS SUPPORTS
 - I. CAMBER, IF ANY
 - J. PERMANENT BRACING
 - K. HANDLING AND ERECTION INSTRUCTIONS
3. FIVE COPIES OF EACH TRUSS DESIGN AND/OR SHOP DRAWINGS SHALL BE SUBMITTED TO THE ARCHITECT FOR REVIEW PRIOR TO THE FABRICATION OF ANY COMPONENTS.
4. STRUCTURAL ENGINEERS REVIEW OF DRAWINGS PREPARED BY THE CONTRACTORS, SUPPLIERS, ETC., ARE ONLY FOR CONFORMANCE WITH DESIGN CONCEPT. CONSTRUCTION SHALL NOT START WITHOUT SAID REVIEW.

- DESIGN CRITERIA:**
1. BUILDING CODE: CURRENT IBC
 2. SEISMIC AV = 0.125; AA = 0.13
 3. BASIC WIND SPEED 90 MPH, EXPOSURE C
 4. PITCH 4:12



A
3 BUILDING SECTION
SCALE: 1/4" = 1' - 0"

Concrete Block Truck Wash
District #7 - Cedar County
El Dorado Springs, Missouri

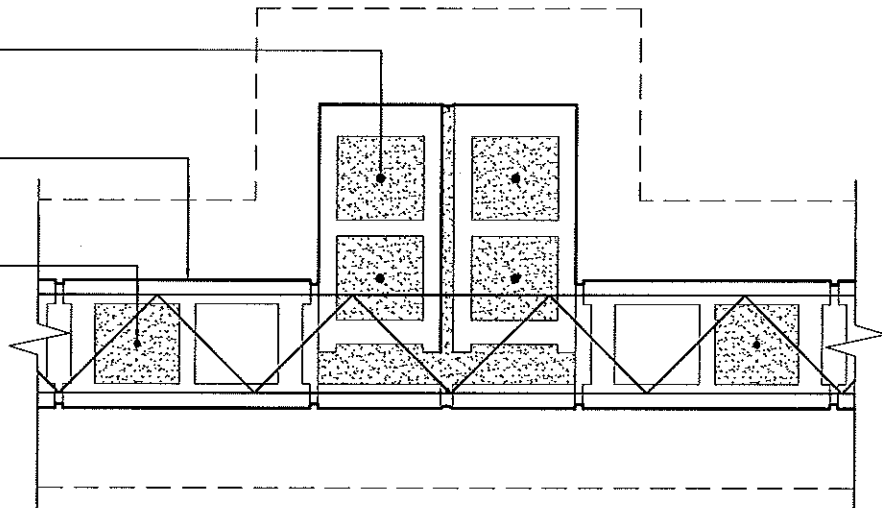
MISSOURI DEPARTMENT
OF TRANSPORTATION
DIVISION OF GENERAL SERVICES
FACILITIES MANAGEMENT

BUILDING SECTION

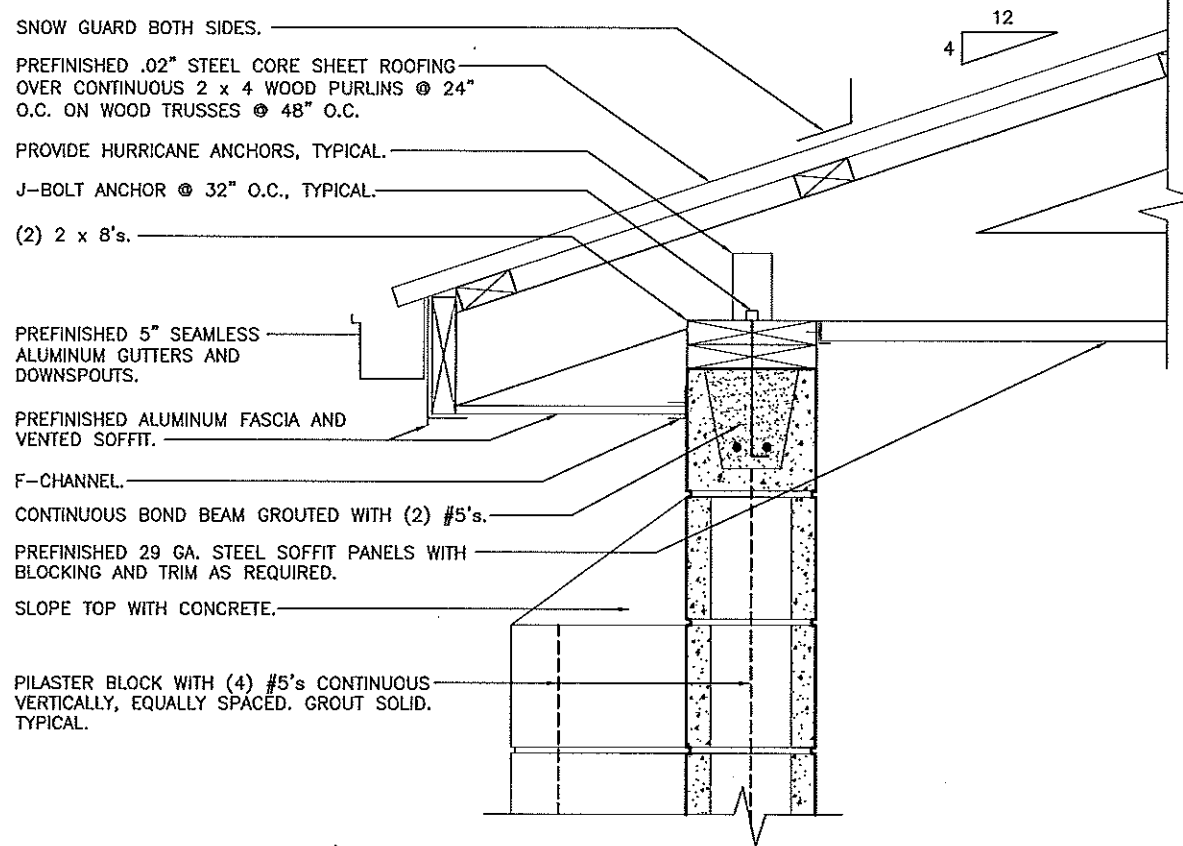
PILASTER BLOCK WITH (4) #5's CONTINUOUS VERTICALLY. EPOXY 12" INTO EXISTING CONCRETE STEM WALL. GROUT CELLS SOLID. (TYPICAL)

8" STRUCTURAL CMU WITH HORIZONTAL JOINT REINF'G. AT 24" O.C. CMU WALL TO BE PAINTED ON ALL SIDES.

#4's CONTINUOUS AT 48" O.C. VERTICALLY. EPOXY 12" INTO WALL. GROUT CELLS SOLID INTO BOND BEAM.



C PILASTER DETAIL
SCALE: 1" = 1'-0"



SNOW GUARD BOTH SIDES.
 PREFINISHED .02" STEEL CORE SHEET ROOFING OVER CONTINUOUS 2 x 4 WOOD PURLINS @ 24" O.C. ON WOOD TRUSSES @ 48" O.C.
 PROVIDE HURRICANE ANCHORS, TYPICAL.
 J-BOLT ANCHOR @ 32" O.C., TYPICAL.
 (2) 2 x 8's.

PREFINISHED 5" SEAMLESS ALUMINUM GUTTERS AND DOWNSPOUTS.
 PREFINISHED ALUMINUM FASCIA AND VENTED SOFFIT.
 F-CHANNEL.
 CONTINUOUS BOND BEAM GROUTED WITH (2) #5's.
 PREFINISHED 29 GA. STEEL SOFFIT PANELS WITH BLOCKING AND TRIM AS REQUIRED.
 SLOPE TOP WITH CONCRETE.

PILASTER BLOCK WITH (4) #5's CONTINUOUS VERTICALLY, EQUALLY SPACED. GROUT SOLID. TYPICAL.

A WALL SECTION
SCALE: 1" = 1'-0"

GENERAL NOTES:

1. DEFORMED STEEL REINFORCING BARS SHALL BE #4 AND LARGER, ASTM A615 GRADE 60.
2. COORDINATE WORK OF OTHER TRADES REQUIRED TO BE INSTALLED IN, UNDER, OR THROUGH CONCRETE PRIOR TO PLACEMENT OF CONCRETE. INSTALL ALL ANCHORAGES AND SLEEVES REQUIRED FOR THE INSTALLATION OF WORK BY OTHER TRADES.

#4's CONTINUOUS AT 48" O.C. VERTICALLY. EPOXY 12" INTO STEM WALL. GROUT CELLS SOLID INTO BOND BEAM.

8" STRUCTURAL CMU WALL WITH HORIZONTAL JOINT REINFORCING @ 24" O.C. ALL CMU WALLS TO BE PAINTED PER SPECIFICATION SECTION 09900.

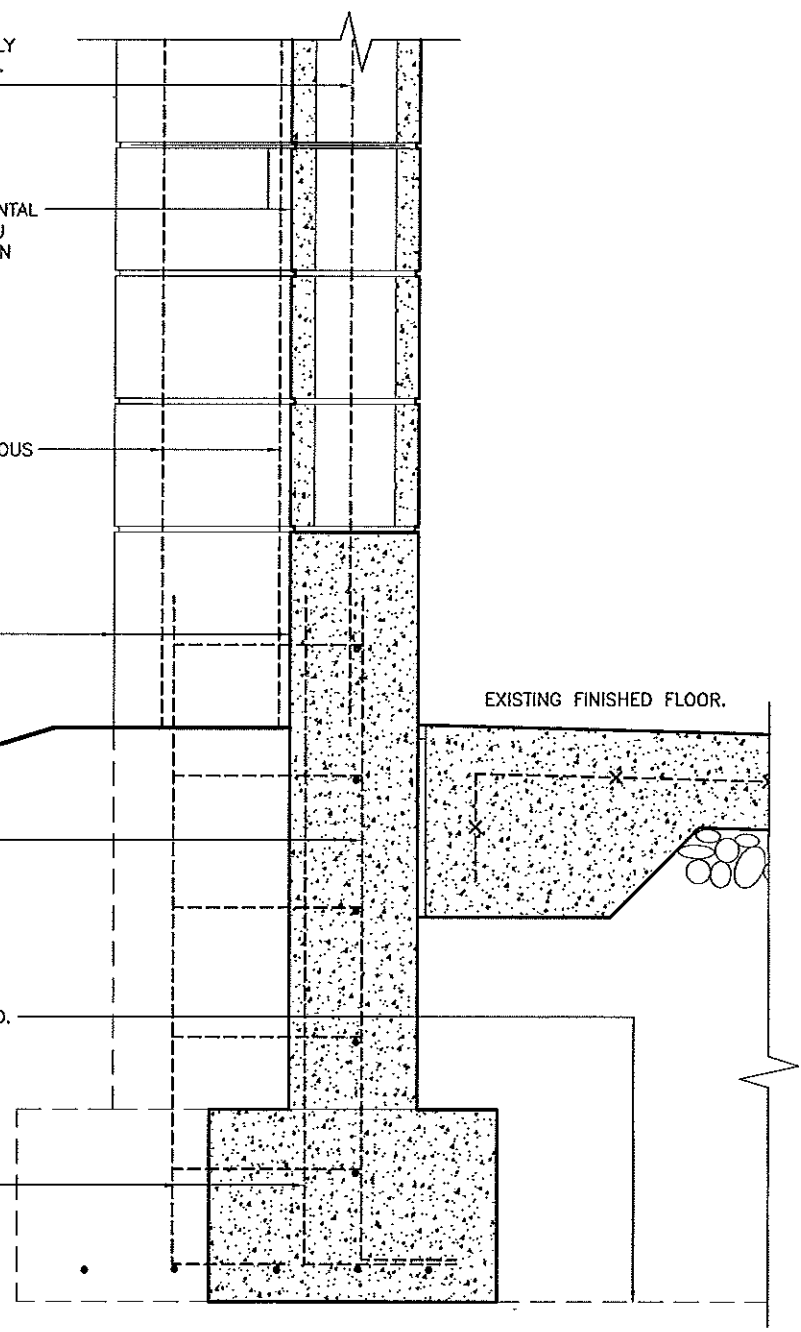
PILASTER BLOCK WITH (4) #5's CONTINUOUS VERTICALLY. EPOXY 12" INTO EXISTING CONCRETE STEM WALL. GROUT CELLS SOLID. (TYPICAL)

EXISTING CONCRETE STEM WALL TO 12" ABOVE FINISHED FLOOR.

EXISTING #4's @ 24" O.C. VERT. (TYP.)

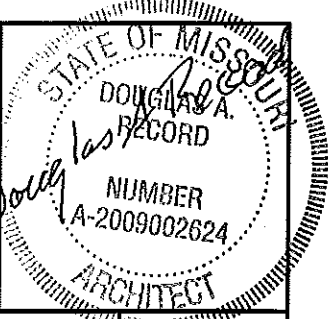
EXISTING CONCRETE GRADE BEAM BEYOND.

EXISTING (4) #5 DOWELS @ PILASTER BLOCK.



B WALL SECTION
SCALE: 1" = 1'-0"

3-22-11



Concrete Block Truck Wash
 District #7 - Cedar County
 El Dorado Springs, Missouri

MISSOURI DEPARTMENT
 OF TRANSPORTATION
 DIVISION OF GENERAL SERVICES
 FACILITIES MANAGEMENT

DETAILS

3.22.11
Douglas A. Douglas
 ARCHITECT
 STATE OF MISSOURI
 RECORD
 NUMBER
 A-2009002624

SNOW GUARD BOTH SIDES.

CONTINUOUS VENTED RIDGE CAP.

PREFINISHED .02" STEEL CORE SHEET ROOFING OVER CONTINUOUS 2 x 4 WOOD PURLINS @ 24" O.C. ON WOOD TRUSSES @ 48" O.C.

CLOSED ENDS AT ROOF EDGE. TYPICAL.

TRUSS BEARING HEIGHT EL. 116.58'

8" STRUCTURAL CMU W/HORIZONTAL JOINT REINFORCING AT 24" O.C. CMU WALL TO BE PAINTED ON ALL SIDES.

PREFINISHED 5" SEAMLESS ALUMINUM GUTTERS AND DOWNSPOUTS.

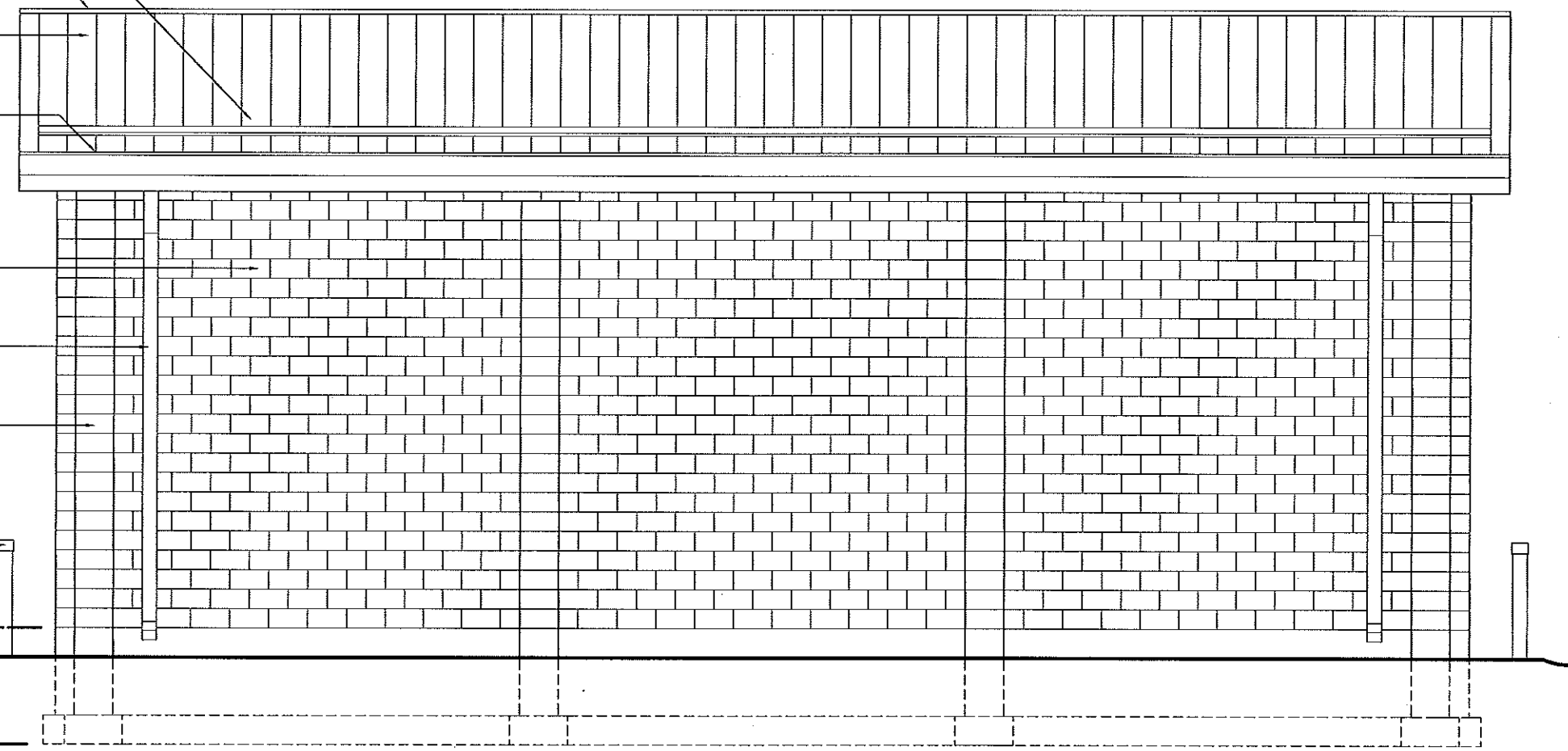
PILASTER BLOCK WITH (4) #5's CONTINUOUS VERTICALLY, EQUALLY SPACED. GROUT SOLID. TYPICAL.

EXISTING BOLLARDS TO REMAIN.

TOP OF EXIST. CONCRETE STEM WALL EL. 101.00'

EXISTING FINISHED FLOOR EL. 100.00'

BOTTOM OF EXISTING FOOTING EL. 97.00'



(A)
 5 SIDEWALL ELEVATION
 SCALE: 3/16" = 1' - 0"

DATE: 3-17-11

Concrete Block Truck Wash
 District #7 - Cedar County
 El Dorado Springs, Missouri

MISSOURI DEPARTMENT
 OF TRANSPORTATION
 DIVISION OF GENERAL SERVICES
 FACILITIES MANAGEMENT

SIDEWALL ELEVATION