

INDEX OF DRAWINGS

- 1 -4 COVER SHEET
- 2 -4 NORTH & SOUTH ELEVATIONS
- 3 -4 EAST & WEST ELEVATIONS
- 4 -4 DETAILS

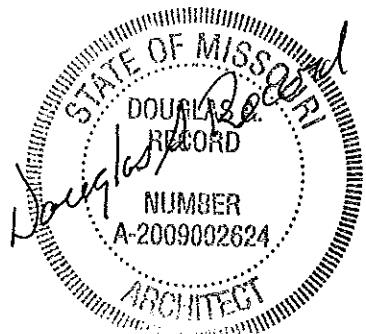
MISSOURI DEPARTMENT  
OF TRANSPORTATION  
BUTLER MAINTENANCE BUILDING REROOF

CODE REQUIREMENTS

BUILDING CODE - CURRENT IBC

BATES COUNTY

DISTRICT #7  
Route 52, 1.5 Miles East Route K  
BUTLER, MISSOURI 64730



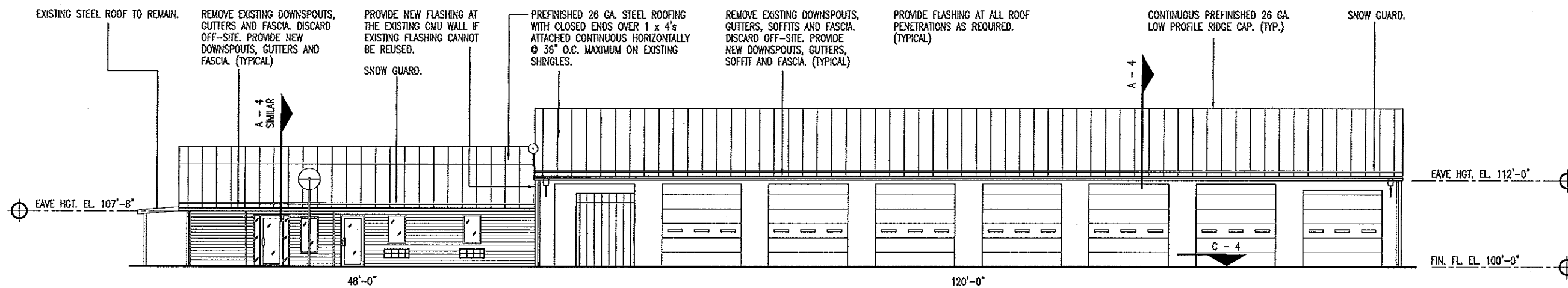
3.25.11

COVER SHEET

MISSOURI DEPARTMENT  
OF TRANSPORTATION  
DIVISION OF GENERAL SERVICES  
FACILITIES MANAGEMENT

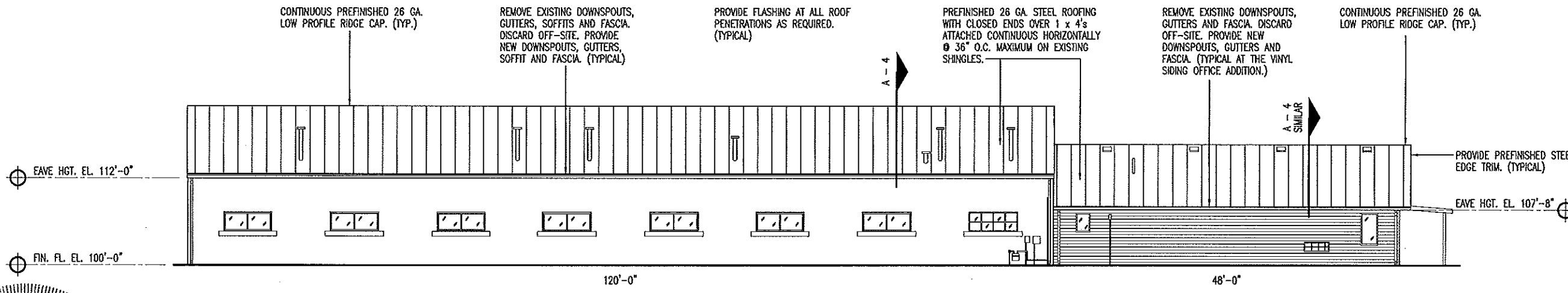
BUTLER MAINTENANCE BUILDING  
REROOF  
DISTRICT #7, BUTLER, MISSOURI

DRAWN BY: LARRY CARVER  
DATE: 3-12-11  
Sheet  
1 of 4

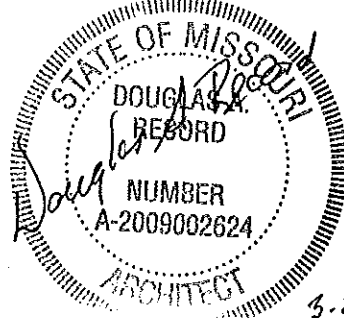


**B** NORTH ELEVATION  
 2 SCALE: 1/16" = 1'-0"

**CONTRACTOR NOTE:**  
 DISCARD ALL DEBRIS OFF-SITE.



**A** SOUTH ELEVATION  
 2 SCALE: 1/16" = 1'-0"

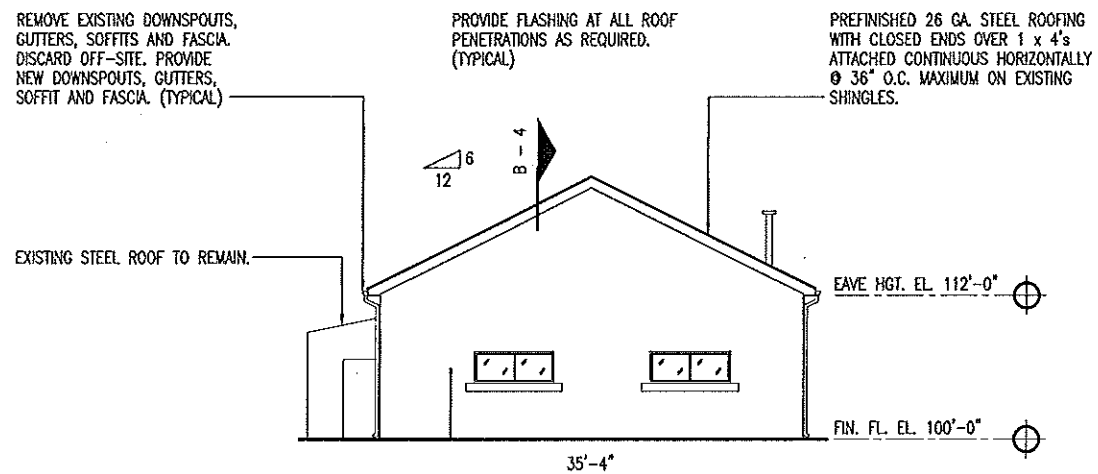


**NORTH & SOUTH ELEVATIONS**

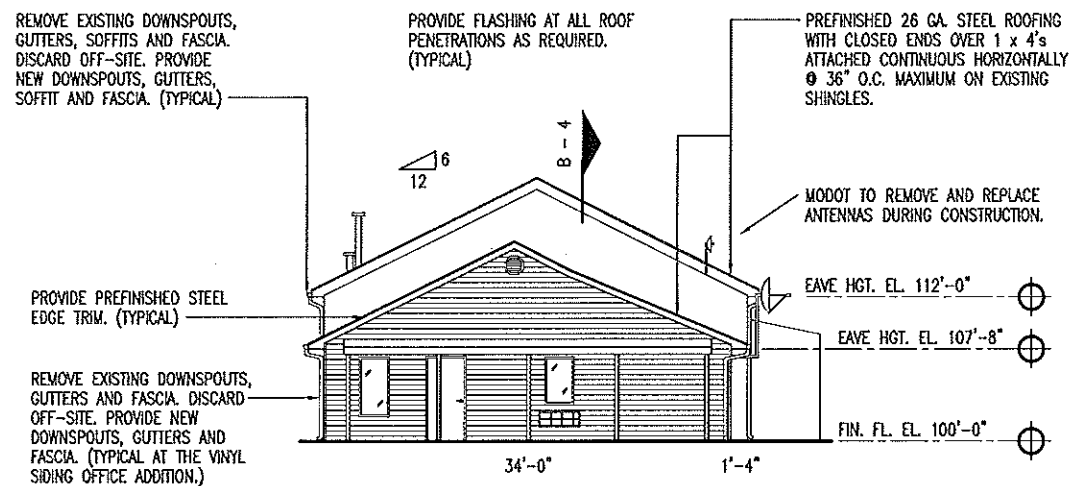
MISSOURI DEPARTMENT  
 OF TRANSPORTATION  
 DIVISION OF GENERAL SERVICES  
 FACILITIES MANAGEMENT

BUTLER MAINTENANCE BUILDING  
 REROOF  
 DISTRICT #7, BUTLER, MISSOURI

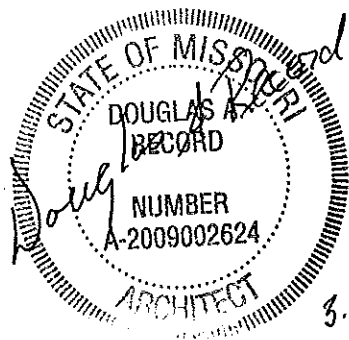
DRAWN BY: LARRY CARVER  
 DATE: 3-16-11  
 Sheet  
 2 of 4



**B** EAST ELEVATION  
3 SCALE: 1/16" = 1'-0"



**A** WEST ELEVATION  
3 SCALE: 1/16" = 1'-0"

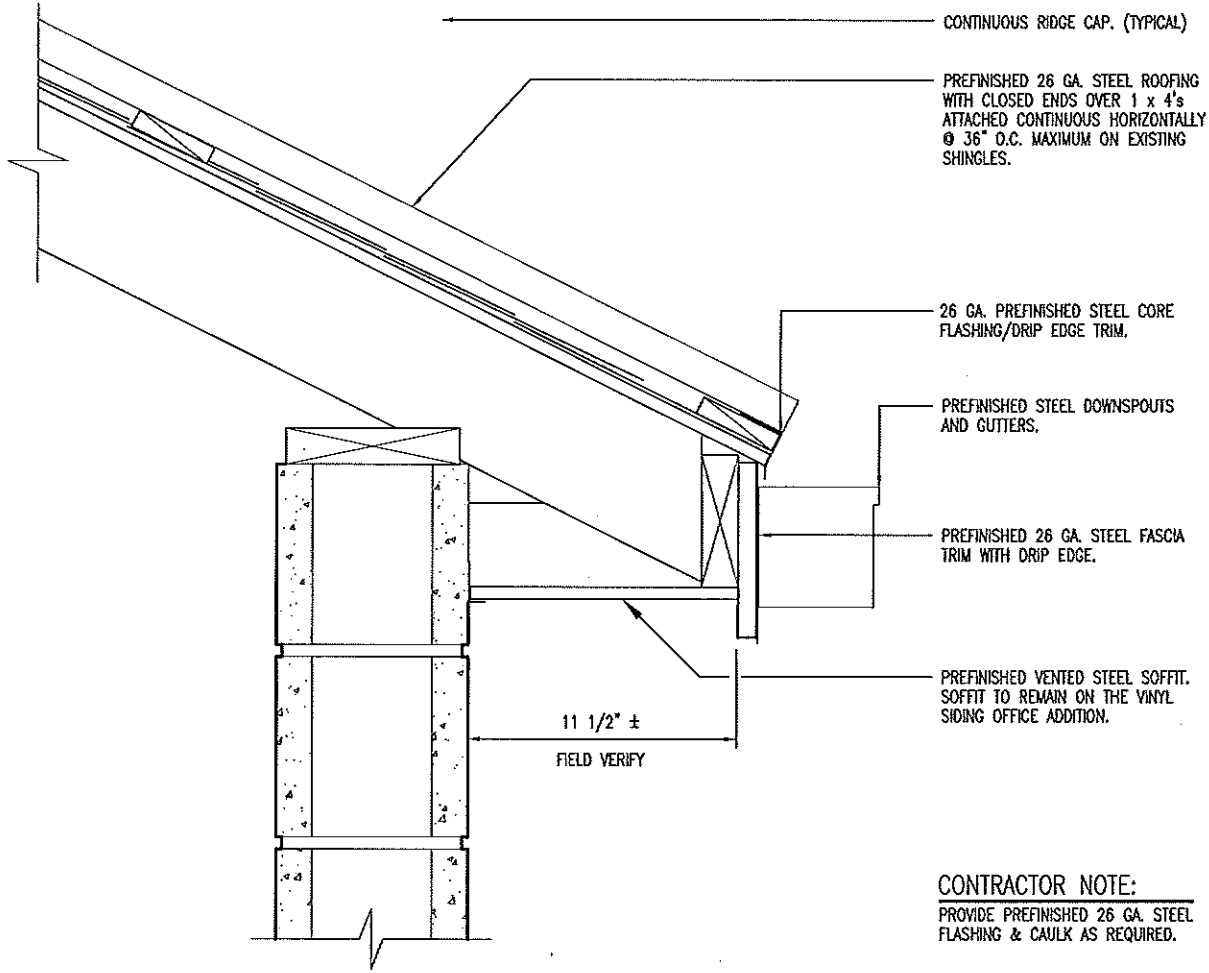


EAST & WEST ELEVATIONS

MISSOURI DEPARTMENT  
OF TRANSPORTATION  
DIVISION OF GENERAL SERVICES  
FACILITIES MANAGEMENT

BUTLER MAINTENANCE BUILDING  
REROOF  
DISTRICT #7, BUTLER, MISSOURI

DRAWN BY: LARRY CARVER  
DATE: 3-12-11  
Sheet  
3 of 4



CONTINUOUS RIDGE CAP. (TYPICAL)

PREFINISHED 26 GA. STEEL ROOFING WITH CLOSED ENDS OVER 1 x 4's ATTACHED CONTINUOUS HORIZONTALLY @ 36" O.C. MAXIMUM ON EXISTING SHINGLES.

26 GA. PREFINISHED STEEL CORE FLASHING/DRIP EDGE TRIM.

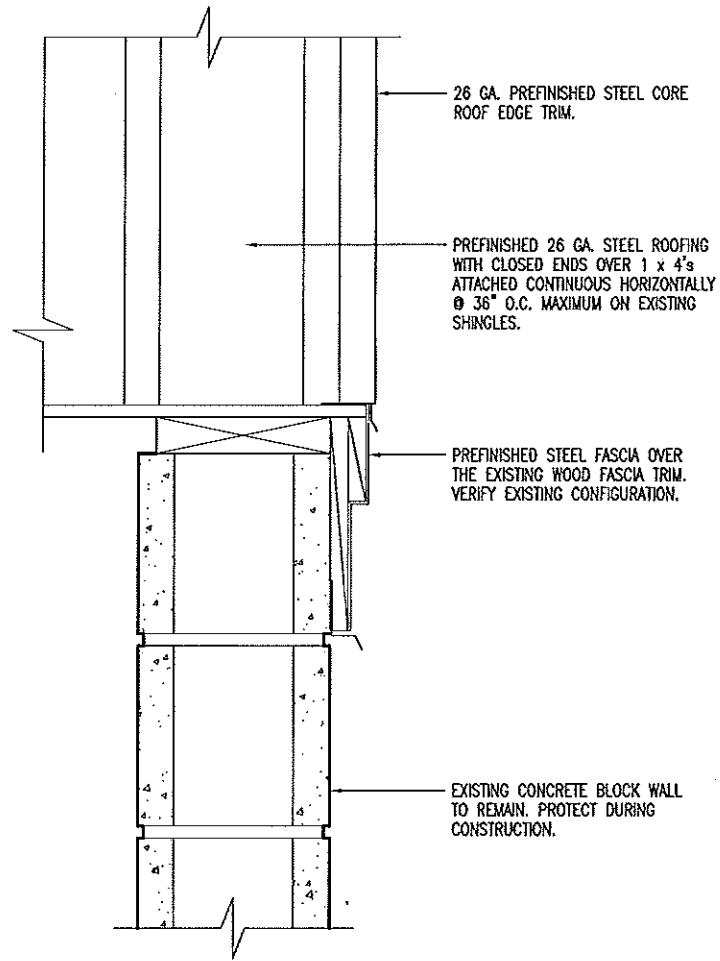
PREFINISHED STEEL DOWNSPOUTS AND GUTTERS.

PREFINISHED 26 GA. STEEL FASCIA TRIM WITH DRIP EDGE.

PREFINISHED VENTED STEEL SOFFIT. SOFFIT TO REMAIN ON THE VINYL SIDING OFFICE ADDITION.

11 1/2" ±  
FIELD VERIFY

**CONTRACTOR NOTE:**  
PROVIDE PREFINISHED 26 GA. STEEL FLASHING & CAULK AS REQUIRED.

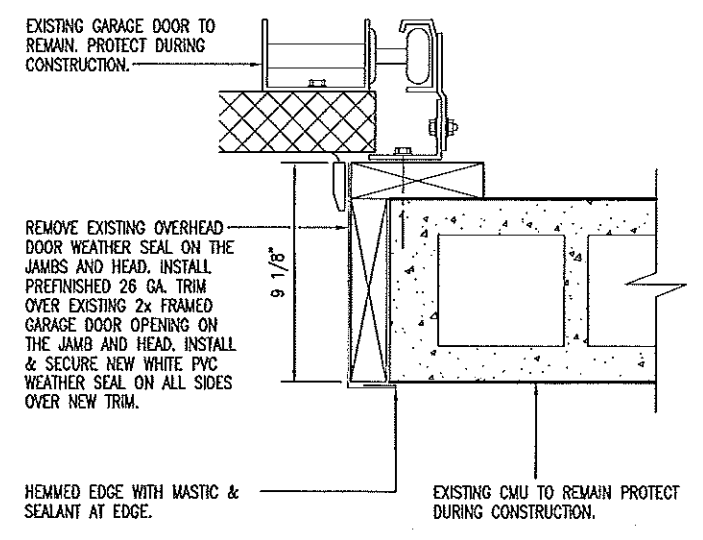


26 GA. PREFINISHED STEEL CORE ROOF EDGE TRIM.

PREFINISHED 26 GA. STEEL ROOFING WITH CLOSED ENDS OVER 1 x 4's ATTACHED CONTINUOUS HORIZONTALLY @ 36" O.C. MAXIMUM ON EXISTING SHINGLES.

PREFINISHED STEEL FASCIA OVER THE EXISTING WOOD FASCIA TRIM. VERIFY EXISTING CONFIGURATION.

EXISTING CONCRETE BLOCK WALL TO REMAIN. PROTECT DURING CONSTRUCTION.

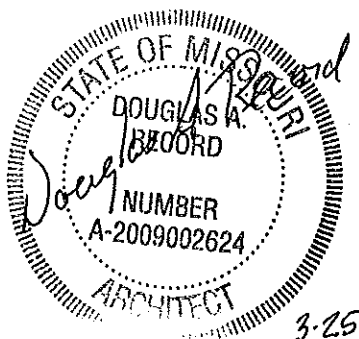


EXISTING GARAGE DOOR TO REMAIN. PROTECT DURING CONSTRUCTION.

REMOVE EXISTING OVERHEAD DOOR WEATHER SEAL ON THE JAMBS AND HEAD. INSTALL PREFINISHED 26 GA. TRIM OVER EXISTING 2x FRAMED GARAGE DOOR OPENING ON THE JAMB AND HEAD. INSTALL & SECURE NEW WHITE PVC WEATHER SEAL ON ALL SIDES OVER NEW TRIM.

HEMMED EDGE WITH MASTIC & SEALANT AT EDGE.

EXISTING CMU TO REMAIN PROTECT DURING CONSTRUCTION.



**A** WALL SECTION  
4 SCALE: 1-1/2" = 1'-0"

**B** GABLE END WALL  
4 SCALE: 1-1/2" = 1'-0"

**C** HEAD SIMILAR (7 TOTAL)  
OVERHEAD DOOR JAMB  
4 SCALE: 1-1/2" = 1'-0"

DETAILS

MISSOURI DEPARTMENT  
OF TRANSPORTATION  
DIVISION OF GENERAL SERVICES  
FACILITIES MANAGEMENT

BUTLER MAINTENANCE BUILDING  
REROOF  
DISTRICT #7, BUTLER, MISSOURI

DRAWN BY: LARRY CARVER  
DATE: 3-16-11  
Sheet  
4 of 4