

INDEX OF DRAWINGS

- 1 - 6 COVER SHEET
- 2 - 6 FLOOR PLAN
- 3 - 6 DETAILS
- 4 - 6 ELEVATIONS
- 5 - 6 ROOF FRAMING PLAN
- 6 - 6 WALL SECTIONS

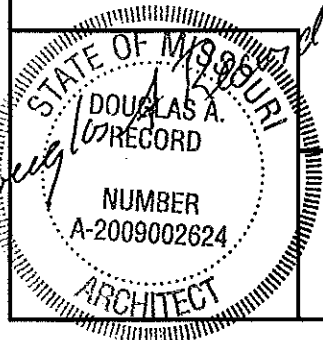
CODE REQUIREMENTS

BUILDING CODE - CURRENT IBC

MISSOURI DEPARTMENT OF TRANSPORTATION
 DISTRICT 4 - HARRISONVILLE STORAGE BUILDING
 CASS COUNTY
 HARRISONVILLE, MISSOURI

FABRICATOR NOTES

THESE DRAWINGS ARE FURNISHED AS A GUIDE TO BIDDERS IN SUBMITTING COMPLETE DETAILED DRAWINGS OF THEIR PROPOSED STRUCTURE TO BE SEALED BY AN ARCHITECT/ENGINEER. WHERE "AS REQUIRED" IS USED THE BIDDER MUST FURNISH A DETAILED DESCRIPTION OF THE BUILDING ELEMENT TO BE FURNISHED.

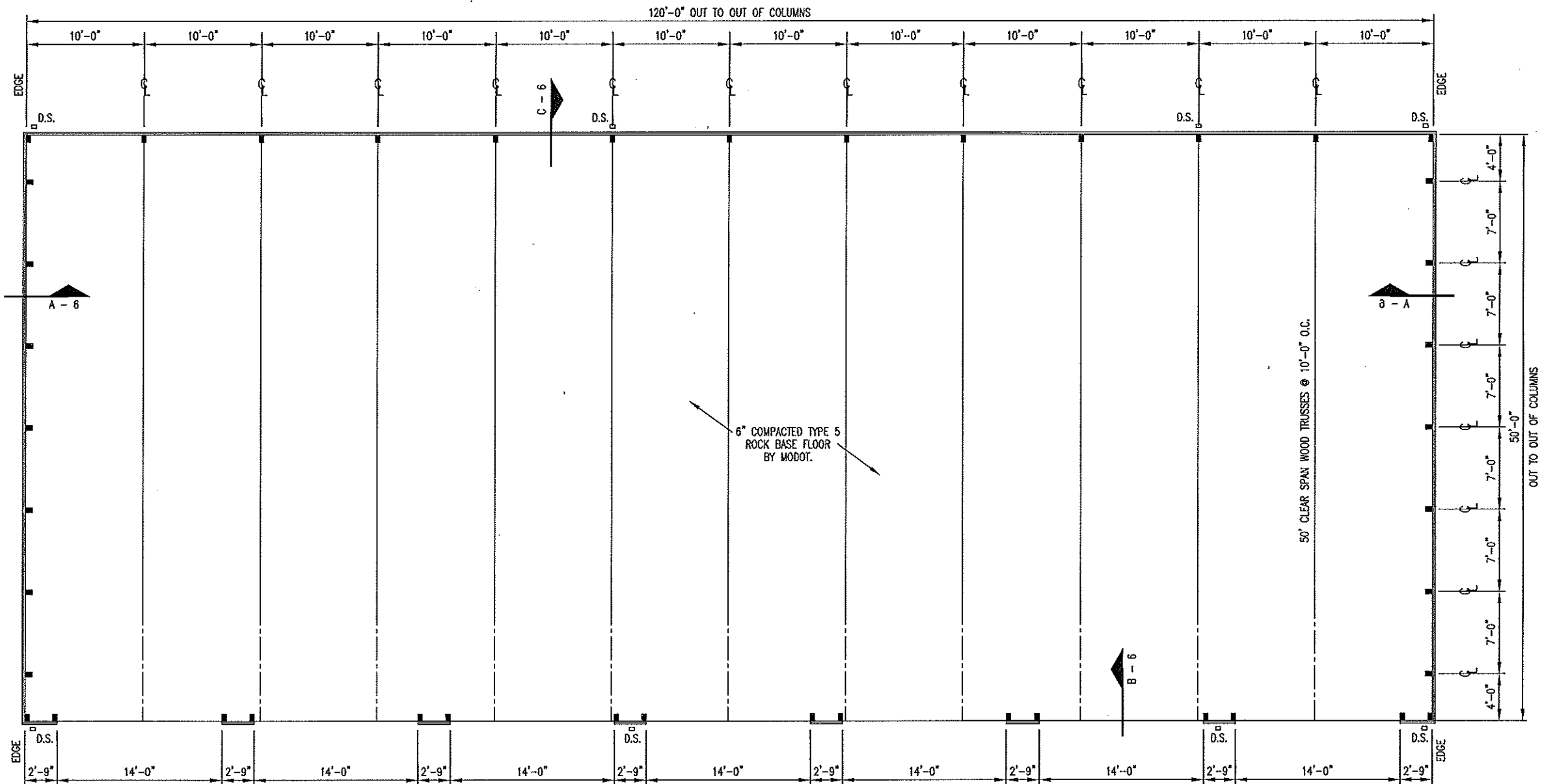


DISTRICT 4 - HARRISONVILLE
 STORAGE BUILDING

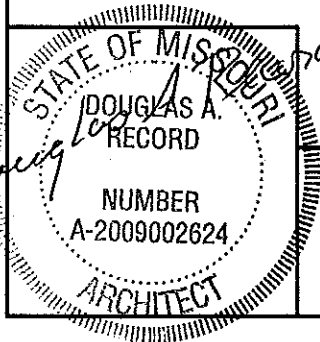
MISSOURI DEPARTMENT
 OF TRANSPORTATION
 GENERAL SERVICES
 FACILITIES MANAGEMENT

COVER SHEET

DRAWN BY: LARRY CARVER
 CHECK BY: DOUG RECORD
 DATE: 2-4-11
 Sheet
 1 of 6



A FLOOR PLAN
2 SCALE: 3/32" = 1'-0"



DISTRICT 4 - HARRISONVILLE
STORAGE BUILDING

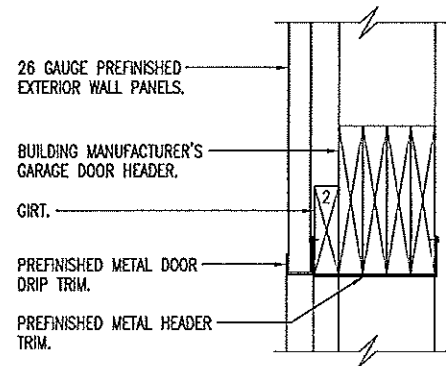
MISSOURI DEPARTMENT
OF TRANSPORTATION
GENERAL SERVICES
FACILITIES MANAGEMENT

FLOOR PLAN

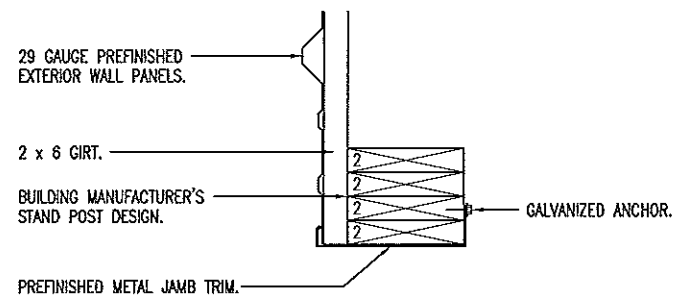
DRAWN BY: LARRY CARVER
CHECK BY: DOUG RECORD
DATE: 2-4-11
Sheet
2 of 6

CONCRETE NOTES

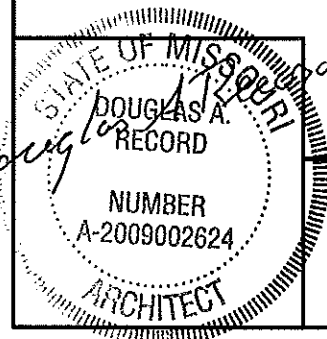
1. CONCRETE WORK SHALL BE EXECUTED IN STRICT COMPLIANCE WITH THE LATEST EDITION OF THE AMERICAN CONCRETE INSTITUTE (A.C.I.) MANUAL OF CONCRETE PRACTICE.
2. FOUNDATION DESIGN IS BASED UPON AN ASSUMED SOIL BEARING CAPACITY OF 2000 PSF. IF WET OR UNUSUAL SOIL CONDITIONS ARE ENCOUNTERED, NOTIFY THE DESIGNER AND CONSTRUCTION INSPECTOR BEFORE PROCEEDING WITH THE WORK.
3. IF CONDITIONS REQUIRING ROCK EXCAVATION ARE ENCOUNTERED, NOTIFY THE DESIGNER AND CONSTRUCTION INSPECTOR BEFORE PROCEEDING WITH THE WORK.
4. ALL CONCRETE SHALL BE TYPE 1 CEMENT WITH A COMPRESSIVE STRENGTH OF 3,500 PSI @ 28 DAYS WITH 4" TO 5" SLUMP.



A GARAGE DOOR HEAD
3 SCALE: 1" = 1'-0"



B GARAGE DOOR JAMB
3 SCALE: 1" = 1'-0"

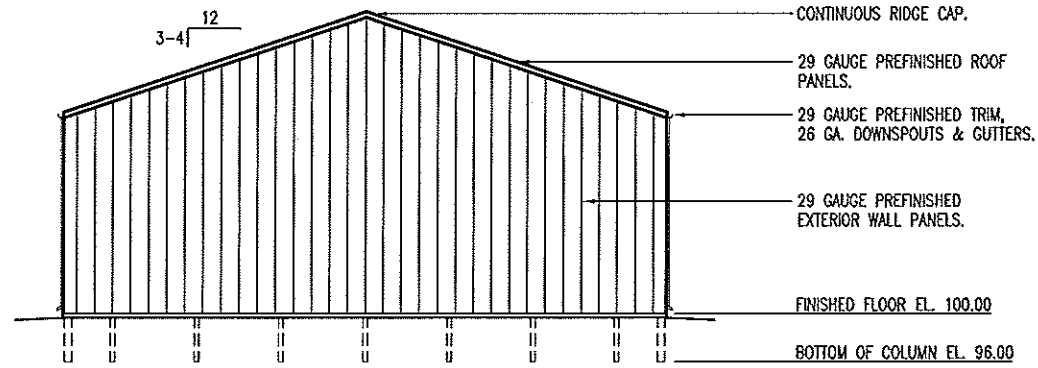


DISTRICT 4 - HARRISONVILLE
STORAGE BUILDING

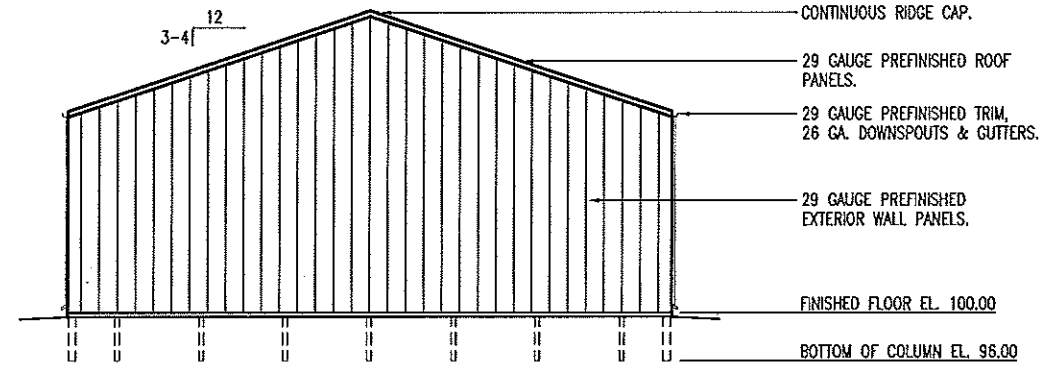
MISSOURI DEPARTMENT
OF TRANSPORTATION
GENERAL SERVICES
FACILITIES MANAGEMENT

DETAILS

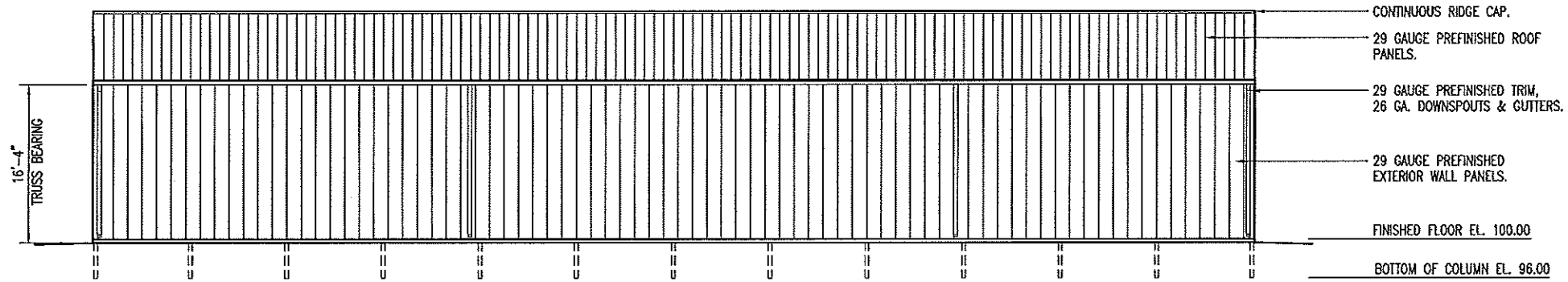
DRAWN BY: LARRY CARVER
CHECK BY: DOUG RECORD
DATE: 2-4-11
Sheet 3 of 6



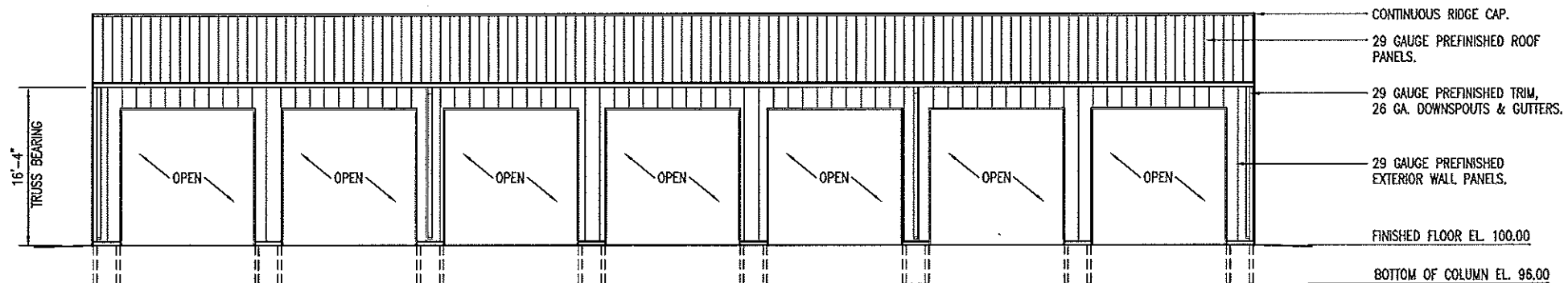
C LEFT ELEVATION
4 SCALE: 1/16" = 1'-0"



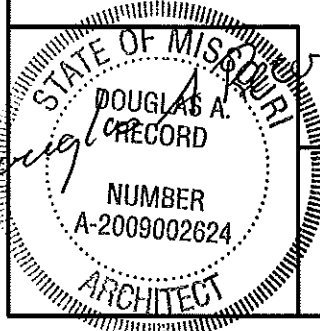
D RIGHT ELEVATION
4 SCALE: 1/16" = 1'-0"



B REAR ELEVATION
4 SCALE: 1/16" = 1'-0"



A FRONT ELEVATION
4 SCALE: 1/16" = 1'-0"

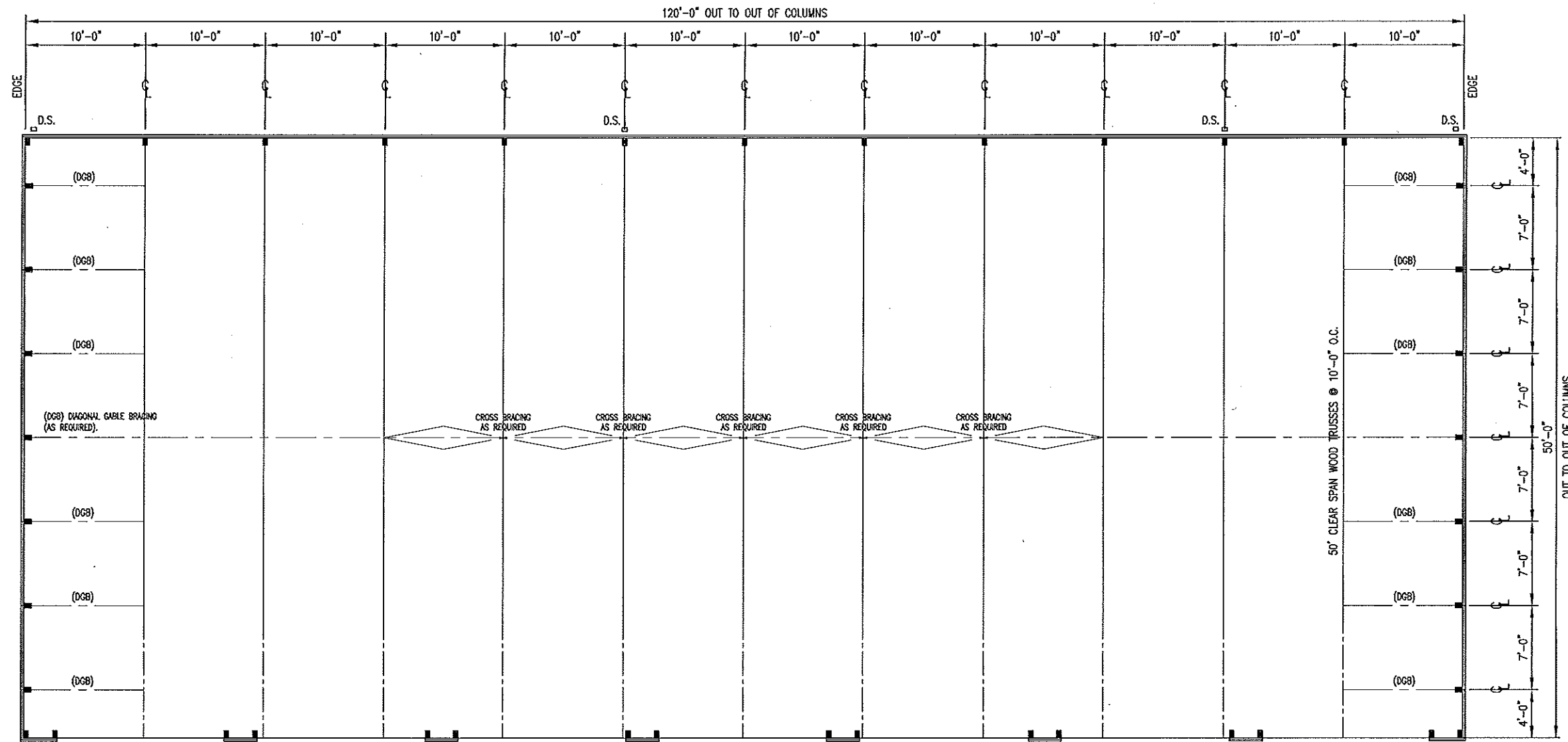


DISTRICT 4 - HARRISONVILLE
STORAGE BUILDING

MISSOURI DEPARTMENT
OF TRANSPORTATION
GENERAL SERVICES
FACILITIES MANAGEMENT

ELEVATIONS

DRAWN BY: LARRY CARVER
CHECK BY: DOUG RECORD
DATE: 2-4-11
Sheet
4 of 6



2 x 4 ROOF PURLINS
(NOT SHOWN) AS REQUIRED

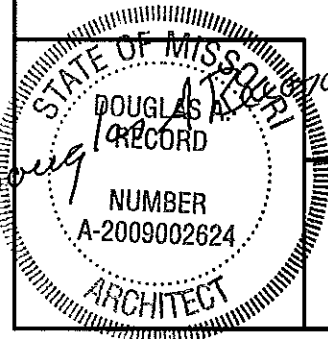
BUILDING MANUFACTURER'S
TYPICAL DOOR HEADERS,
SIZED PER OPENING.

ROOF FRAMING NOTES

- DESIGN LOADING FOR ROOF TRUSSES SHALL MEET THE FOLLOWING CRITERIA:

ROOF LIVE LOAD	20 PSF
ROOF DEAD LOAD	4 PSF
BOTTOM CORD DEAD LOAD	5 PSF
EARTHQUAKE	ZONE 1, LATEST EDITION IBC
WIND	90 MPH, EXPOSURE B
DEFLECTION	L/360
SPACING	10'-0" O.C.
- TRUSS DESIGN SUBMITTALS SHALL BE SEALED AND SIGNED BY A PROFESSIONAL ENGINEER LICENSED IN THE STATE OF MISSOURI.
- ROOF TRUSSES AND RAFTERS SHALL BE ANCHORED TO THE TOP PLATE OF LOAD BEARING WALLS WITH SEISMIC AND HURRICANE ANCHORS EQUAL TO SIMPSON STRONG TIE #11 ANCHORS.

A
5 ROOF FRAMING PLAN
SCALE: 3/32 = 1'-0"

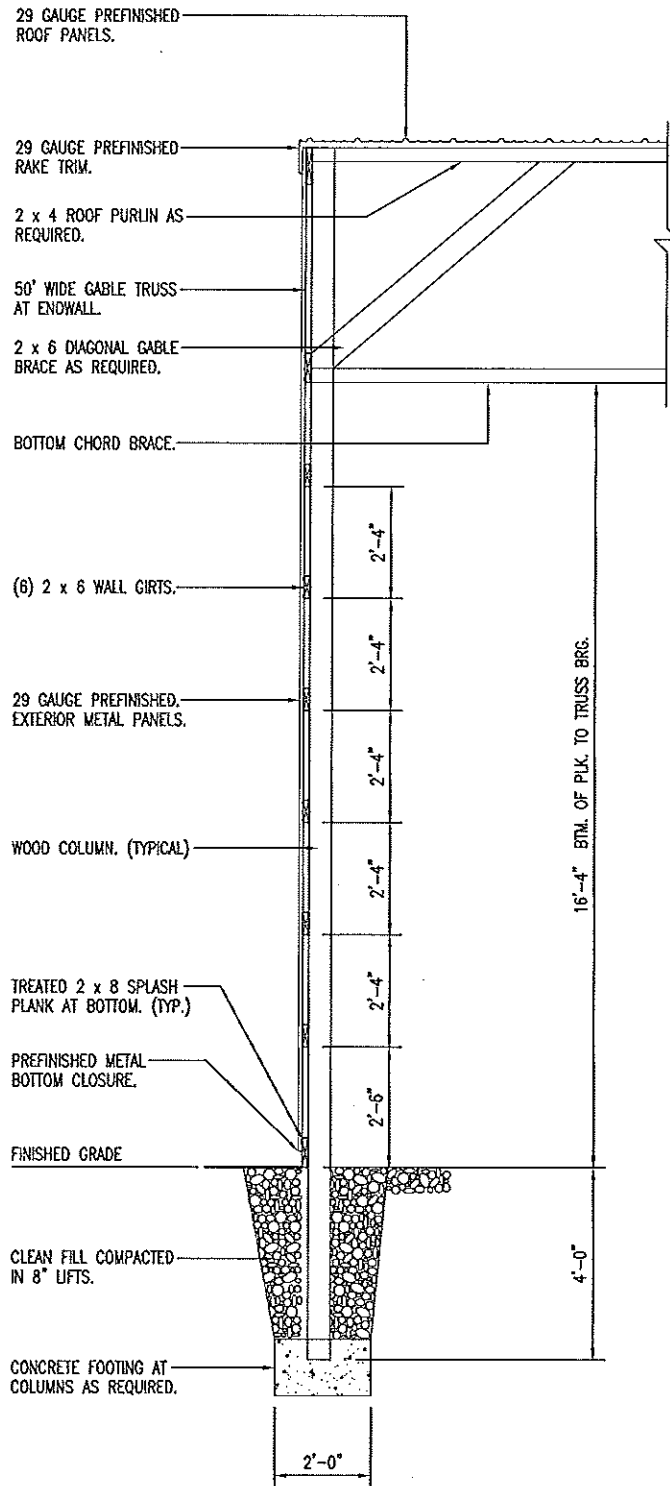


DISTRICT 4 - HARRISONVILLE
STORAGE BUILDING

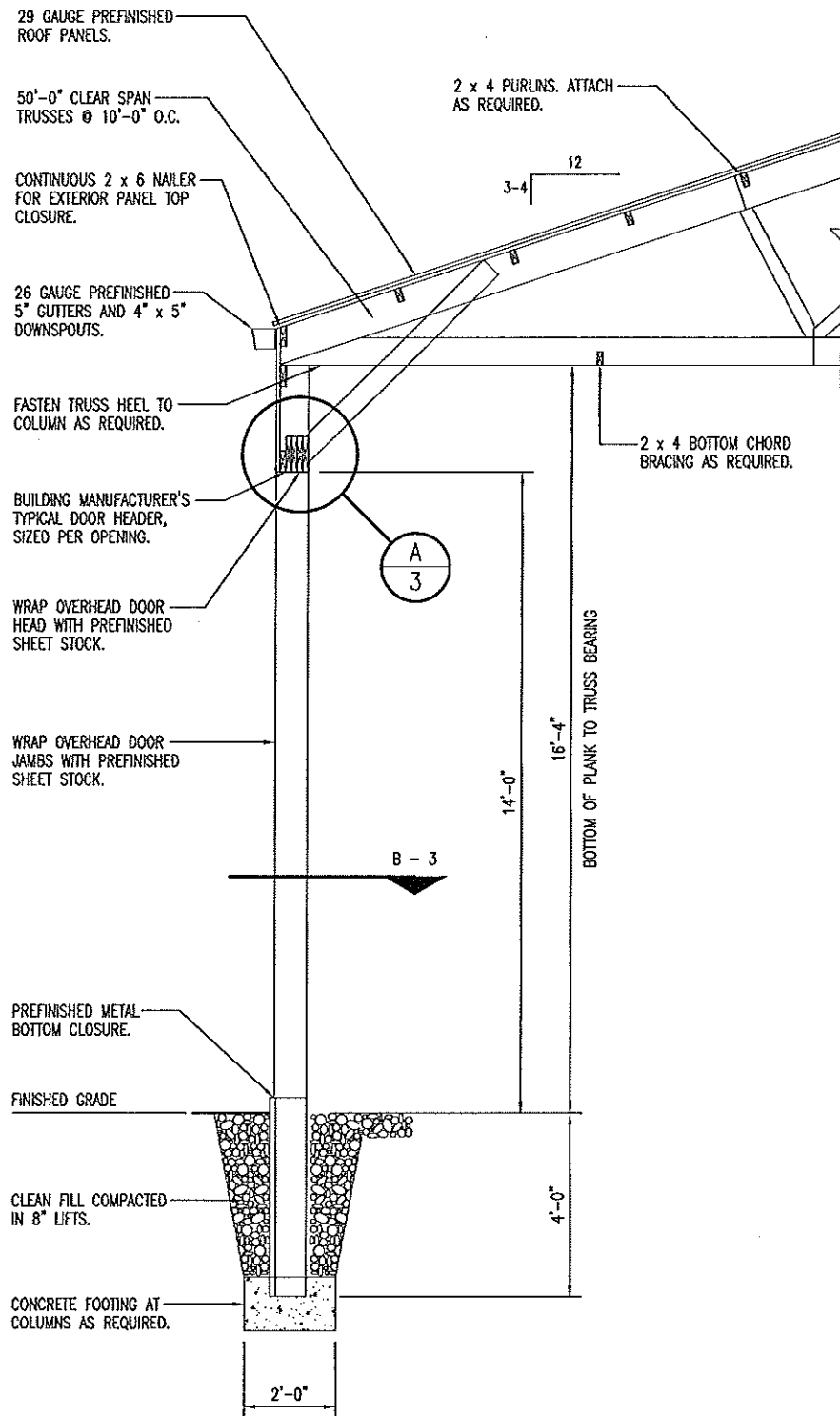
MISSOURI DEPARTMENT
OF TRANSPORTATION
GENERAL SERVICES
FACILITIES MANAGEMENT

ROOF FRAMING PLAN

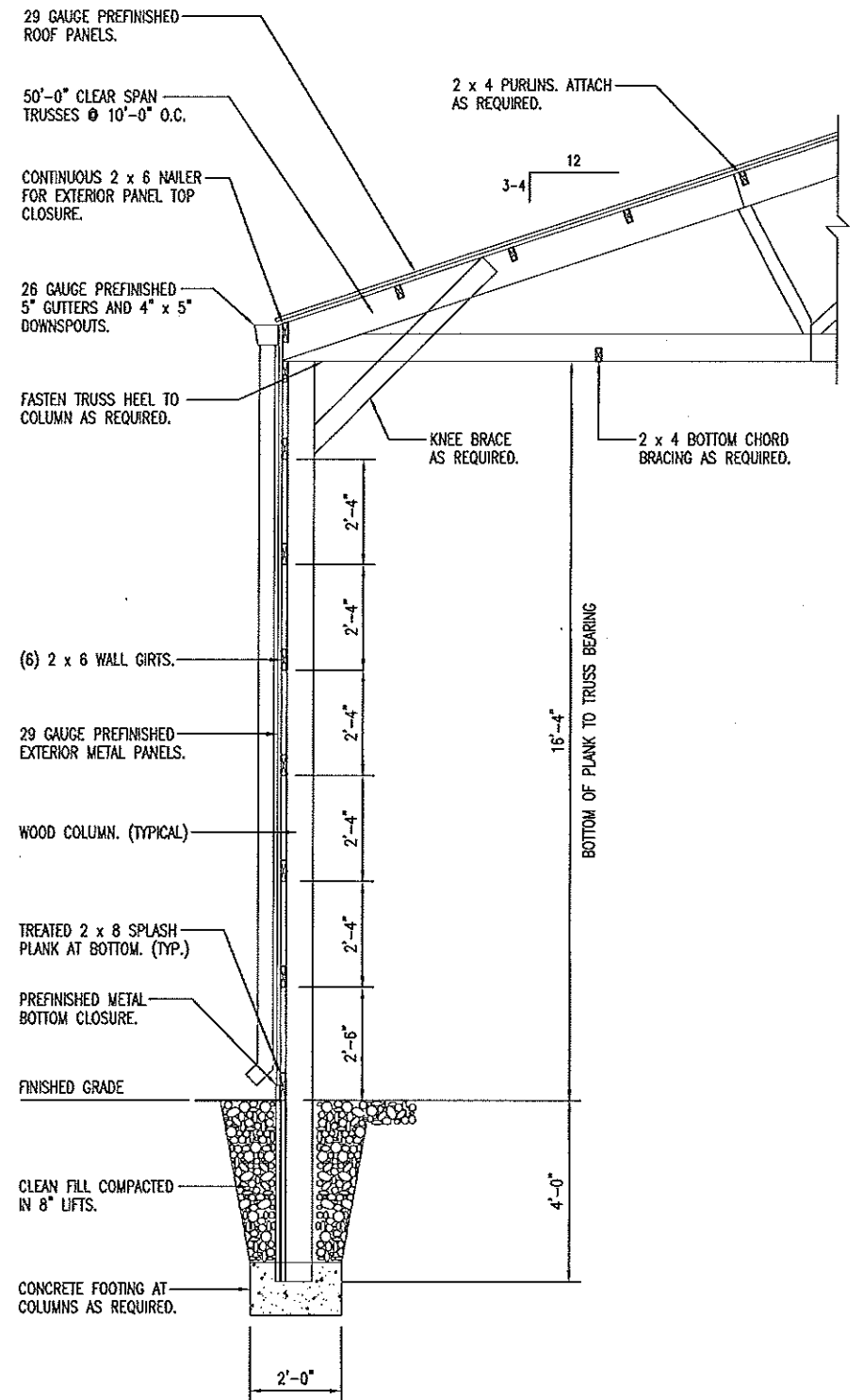
DRAWN BY: LARRY CARVER
CHECK BY: DOUG RECORD
DATE: 2-4-11
Sheet
5 of 6



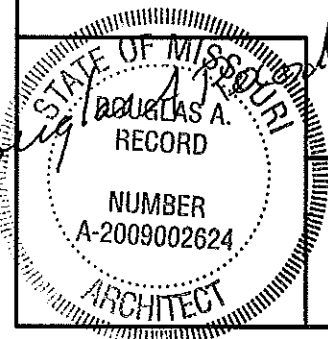
A ENDWALL SECTION
 6 SCALE: 1/4" = 1'-0"



B OVERHEAD DOOR SECTION
 6 SCALE: 1/4" = 1'-0"



C SIDEWALL SECTION
 6 SCALE: 1/4" = 1'-0"



DISTRICT 4 - HARRISONVILLE
 STORAGE BUILDING

MISSOURI DEPARTMENT
 OF TRANSPORTATION
 GENERAL SERVICES
 FACILITIES MANAGEMENT

WALL SECTIONS

DRAWN BY: LARRY CARVER
 CHECK BY: DOUG RECORD
 DATE: 2-4-11
 Sheet 6 of 6