

Pre Bid Meeting Minutes
St Louis City, I-64
May 4, 2011
District 6, Room 207 TMC

Presentations

1. Bob Gummersheimer, MoDOT Project Manager presented the project overview.
2. Patricia Weekley , MoDOT External Civil Rights Specialist, presented the DBE and trainee requirements as outlined in the contract documents.
3. Dan Shane of George Butler Associates discussed highlights of the Roadway plans and JSP.
4. Tom Lohman of Horner & Shifrin discussed highlights from the Bridge plans and JSP.

Handouts

- Agenda
- Satellite photo showing project limits, joint replacements and available staging areas
- Plan sheet showing construction staging

Questions and Answers

1. Q: 10% DBE is difficult to achieve with this project, can the backup for this 10% be released, including list of possible DBE contractors, and projected scope of work? A quick response is appreciated.

A: A list of DBE certified contractors is available on MoDOT's website -

http://www.modot.org/business/contractor_resources/External_Civil_Rights/mrcc.htm

Scope of work has been reviewed and Addendum No. 1 reflects a DBE percentage reduction to 7%. Scope of work considered by DBE firms was as follows:

Hauling/Removals

React 350

Traffic Control

Structural Steel (expansion joints)

Drainage

Misc. Concrete

Material supply

2. Q: Are event schedules known? Broadway ramp must be open during events, but work can be completed elsewhere during events, correct?

A: Event schedules for 2012 and 2013 are not known yet. A list of 2011 events is posted on the website for informational purposes; this will be similar to 2012 and 2013. Note that not all of these events will be affected by this project and the list does not include major league sporting events which during the construction season will include 81 Cardinals games and possibly more

Pre Bid Meeting Minutes
St Louis City, I-64
May 4, 2011
District 6, Room 207 TMC

playoff games in October, 5-6 Blues games in October and 3 or 4 Blues games in April plus potential for more playoff games into June.

The Broadway on-ramp must remain open during downtown events; however work can be completed elsewhere when within the time restrictions listed in the contract documents.

3. Q: Mention was made earlier in the presentation of working days – this is a Completion date job, correct?

A: That is correct – completion date is May 24, 2013.

4. Q: What defines a ramp? Where does it start? When do the days of closure begin?

A: Ramp closure begins when traffic cannot use the ramp.

5. Q: The maintenance of work JSP says that the contractor begins maintenance of the work upon notice to proceed. Can this be changed to when work begins? Can EBL and WBL be measured separately?

A: This will be changed to when work begins, with separate starting times for EBL and WBL based on when work begins in those areas – see Addendum #1.

6. Q: Is the maximum incentive \$1 million?

A: Yes, the maximum total combined incentive that the contractor can earn, based on A+B bidding and liquidated savings for early completion will be \$1 million.

7. Q: April 1, 2012 is listed as the start date, can any work be done before?

A: Field measurements, coring, edge repair, and other minor tasks that do not require lane restrictions may begin prior to April 1, 2012.

8. Q: Have fibers been used in a mobile mixer?

A: Yes – both synthetic and AR glass fibers have been used in a mobile mixer. Glass fibers are in a spool and are cut into the mixer. Synthetic fibers are precut and are mechanically added.

9. Q: For diamond grinding – is texturing required?

A: The purpose of diamond grinding is to smooth the concrete for a better ride. Texturing needs to be achieved thru tining or diamond grinding or a combination thereof.

**Pre Bid Meeting Minutes
St Louis City, I-64
May 4, 2011
District 6, Room 207 TMC**

10. Q: Does concrete need to be removed completely around the rebar, including shadows?

A: Bridge JSP I Section 4.1.3 addresses this issue. In short, all unsound concrete shall be removed, but sound concrete under the rebar may remain if approved by the engineer.

11. Q: If the contractor elects to use all LMC-HE concrete overlay will the partial depth repair be paid for per the quantities estimated in the JSP for LMC and LMC-HE?

A: The quantities in the JSP are used to give contractors an idea of the volume of work required. Partial depth repair will be measured and paid for at the rate for the material actually used.

12. Q: Can you share information on the existing patches?

A: The existing patches vary in size and material. Over the past 3 years approximately 3000 sf of patches have been constructed using a Rapid Set or Low P concrete; some of these areas are repairs to previous patches. More recent patches have not been overlaid with Epoxy Polymer Overlay due to the presence of this pending job. Details of patches before this period of time are not known, but are believed to include a variety of materials. The infrared test data available for download does show existing patches in the imagery (starting on p. 91), though the quantity is not tabulated.

13. Q: Can you better define the ½" removal of sound concrete? Does this include aggregate?

A: The ½" removal includes aggregate.

14. Q: Is ½" removal required for sound patches? If patches are stronger than adjacent material, there may be some over-excavation of material adjacent to the patch, will the contractor be paid for that as partial depth repair or is it a sunk cost? What surface prep is required?

A: Criteria at patches has been reviewed and clarified – see Addendum #1.

15. Q: Will ready mix trucks be allowed for LMC?

A: Yes – provided all performance requirements are met.

16. Q: Can you clarify the surface preparation requirements for areas to receive new Epoxy Polymer Concrete Overlay to better determine removal methods?

A: This will be reviewed and clarified – see Addendum #1.

17. Q: Is RR liability insurance required?

A: It is expected that the contractor can avoid work affecting railroad property, in which case RR liability insurance would not be required. However, if the contractor plans to impact RR right-of-way during construction, then all requirements of Bridge JSP S and T shall be met.

**Pre Bid Meeting Minutes
St Louis City, I-64
May 4, 2011
District 6, Room 207 TMC**

18. Q: Is it a requirement that finger plates be beveled to provide better fit-up with the bar dams or can the fingers be cut?

A: Beveling is required. Fingers cannot be cut off. Also note that the dams at Bents W13 and E14 have been revised - see Addendum #1.

19. Q: Please reconsider DBE requirements; it is difficult for DBE firms to take on the risk associated with liquidated damages.

A: See Question #1.

20. Q: Has a good faith effort for DBE been successfully accepted? If so can we see an example?

A: MoDOT's External Civil Rights Division uses 49 CFR Part 26, Appendix A as guidance in reviewing good faith efforts as attached. This is not an exclusive list of required efforts and each GFE submittal is reviewed on a case by case basis.

21. Q: Will proprietary joints be considered in lieu of the detailed finger plates?

A: Bids should reflect the contract documents as they are shown, but use of proprietary joints may be considered after award of the project.

Attachment:

Appendix A to Part 26--Guidance Concerning Good Faith Efforts

I. When, as a recipient, you establish a contract goal on a DOT-assisted contract, a bidder must, in order to be responsible and/or responsive, make good faith efforts to meet the goal. The bidder can meet this requirement in either of two ways. First, the bidder can meet the goal, documenting commitments for participation by DBE firms sufficient for this purpose. Second, even if it doesn't meet the goal, the bidder can document adequate good faith efforts. This means that the bidder must show that it took all necessary and reasonable steps to achieve a DBE goal or other requirement of this part which, by their scope, intensity, and appropriateness to the objective, could reasonably be expected to obtain sufficient DBE participation, even if they were not fully successful.

II. In any situation in which you have established a contract goal, part 26 requires you to use the good faith efforts mechanism of this part. As a recipient, it is up to you to make a fair and reasonable judgment whether a bidder that did not meet the goal made adequate good faith efforts. It is important for you to consider the quality, quantity, and intensity of the different kinds of efforts that the bidder has made. The efforts employed by the bidder should be those that one could reasonably expect a bidder to take if the bidder were actively and aggressively trying to obtain DBE participation sufficient to meet the DBE contract goal. Mere pro forma efforts are not good faith efforts to meet the DBE contract requirements. We emphasize, however, that your determination concerning the sufficiency of the firm's good faith efforts is a judgment call: meeting quantitative formulas is not required.

III. The Department also strongly cautions you against requiring that a bidder meet a contract goal (i.e., obtain a specified amount of DBE participation) in order to be awarded a contract, even though the bidder makes an adequate good faith efforts showing. This rule specifically prohibits you from ignoring bona fide good faith efforts.

IV. The following is a list of types of actions which you should consider as part of the bidder's good faith efforts to obtain DBE participation. It is not intended to be a mandatory checklist, nor is it intended to be exclusive or exhaustive. Other factors or types of efforts may be relevant in appropriate cases.

A. Soliciting through all reasonable and available means (e.g. attendance at pre-bid meetings, advertising and/or written notices) the interest of all certified DBEs who have the capability to perform the work of the contract. The bidder must solicit this interest within sufficient time to allow the DBEs to respond to the solicitation. The bidder must determine with certainty if the DBEs are interested by taking appropriate steps to follow up initial solicitations.

B. Selecting portions of the work to be performed by DBEs in order to increase the likelihood that the DBE goals will be achieved. This includes, where appropriate, breaking out contract work items into economically feasible units to facilitate DBE participation, even when the prime contractor might otherwise prefer to perform these work items with its own forces.

C. Providing interested DBEs with adequate information about the plans, specifications, and requirements of the contract in a timely manner to assist them in responding to a solicitation.

D. (1) Negotiating in good faith with interested DBEs. It is the bidder's responsibility to make a portion of the work available to DBE subcontractors and suppliers and to select those portions of the work or material needs consistent with the available DBE subcontractors and suppliers, so as to facilitate DBE participation. Evidence of such negotiation includes the names, addresses, and telephone numbers of DBEs that were considered; a description of the information provided regarding the plans and specifications for the work selected for subcontracting; and evidence as to why additional agreements could not be reached for DBEs to perform the work.

(2) A bidder using good business judgment would consider a number of factors in negotiating with subcontractors, including DBE subcontractors, and would take a firm's price and capabilities as well as contract goals into consideration. However, the fact that there may be some additional costs involved in finding and using DBEs is not in itself sufficient reason for a bidder's failure to meet the contract DBE goal, as long as such costs are reasonable. Also, the ability or desire of a prime contractor to perform the work of a contract with its own organization does not relieve the bidder of the responsibility to make good faith efforts. Prime contractors are not, however, required to accept higher quotes from DBEs if the price difference is excessive or unreasonable.

E. Not rejecting DBEs as being unqualified without sound reasons based on a thorough investigation of their capabilities. The contractor's standing within its industry, membership in specific groups, organizations, or associations and political or social affiliations (for example union vs. non-union employee status) are not legitimate causes for the rejection or non-solicitation of bids in the contractor's efforts to meet the project goal.

F. Making efforts to assist interested DBEs in obtaining bonding, lines of credit, or insurance as required by the recipient or contractor.

G. Making efforts to assist interested DBEs in obtaining necessary equipment, supplies, materials, or related assistance or services.

H. Effectively using the services of available minority/women community organizations; minority/women contractors' groups; local, state, and Federal minority/women business assistance offices; and other organizations as allowed on a case-by-case basis to provide assistance in the recruitment and placement of DBEs.

V. In determining whether a bidder has made good faith efforts, you may take into account the performance of other bidders in meeting the contract. For example, when the apparent successful bidder fails to meet the contract goal, but others meet it, you may reasonably raise the question of whether, with additional reasonable efforts, the apparent successful bidder could have met the goal. If the apparent successful bidder fails to meet the goal, but meets or exceeds the average DBE participation obtained by other bidders, you may view this, in conjunction with other factors, as evidence of the apparent successful bidder having made good faith efforts.

**Pre Bid Meeting Agenda
St Louis City, I-64
May 4, 2011
District 6, Room 207 TMC**

INTRODUCTIONS

- An Attendance Sheet is being passed around
- Handouts
 - satellite photo with joints and affected properties
 - staging
- Questions are acceptable throughout the session

PROJECT OVERVIEW (Bob Gummersheimer, MoDOT)

- Resurface Deck
 - WBL Concrete Wearing Surface
 - EBL Concrete Wearing Surface at Ends and Epoxy Polymer Surface in middle
- Replace Armor Joints
 - Safe Span
 - Drainage Troughs
- Drainage
- DBE
- Trainees

CONSTRUCTION STAGING (Dan Shane, George Butler Associates)

- Mainline
- Ramps
- Mainline Weekend Work
- Events
- Illinois Traffic and Police administration

ROADWAY JSP HIGHLIGHTS (Dan Shane, George Butler Associates)

- A+B Bidding
- Working Hours
- Traffic Control
 - lump sum
 - Temporary Barrier – cannot be VE'd out
 - Traffic Management Plan - DTM
- Maintenance of work

BRIDGE JSP HIGHLIGHTS (Tom Lohman, Horner & Shifrin)

- Construction Requirements
- Concrete Wearing surface

- Substitution of LMC for LMC-HE, etc.
- Fibers
- Existing lightweight deck
- Bond Strength tests
- Diamond Grinding
- Hydro Demolition
 - Secondary passes at contractor's expense
 - Hammer limits
 - Existing concrete strength (5500-7500 psi)
 - Partial Depth Repair

GENERAL QUESTIONS

2011 Major Event Schedule

January

- 6 12th Night Parade – Soulard
- 7 Joel Osteen – Scottrade Center
- 8-9 The Wedding Show – America’s Center
- 13-15 34th Annual St. Louis RV Vacation & Travel Show – Edward Jones Dome
- 15-17 Cardinal’s Winter Warm Up
- 17 Martin Luther King Observances - Old Courthouse to Grand Center
- 27-30 St. Louis Auto Show – America’s Center
- 27-30 Sesame Street Live – Scottrade Center

February

- 5 Snowman Softball Tourney – Central Fields Forest Park
- 6 Harlem Globetrotters – Scottrade Center
- 12 Family Winter Carnival – Soulard Market Park
- 9-13 St. Louis Boat Show – America’s Center
- 19 Monster Jam – Edward Jones Dome
- 25-27 St. Louis Classic & Challenge Cup – America’s Center
- 25-27 Professional Bull Riding – Scottrade Center
- 26 Mardi Gras 5k Run – Soulard neighborhood
- 26-27 Taste of Soulard – Soulard neighborhood
- 27 Mystic Krewe of Barkus Parade & Wiener Dog Derby – Soulard

March

- 3-6 Builders Home Show – America’s Center
- 4 Mayor’s Mardi Gras Ball – City Hall Rotunda
- 5 Mardi Gras Grand Parade – Soulard
- 8 Fat Tuesday Parade – downtown
- 4-7 Missouri Valley Conference Basketball Tournament – Scottrade
- 12 Downtown St. Patrick’s Day Parade & Run
- 12 St. Patrick’s Day Party in the Landing
- 17 Ancient Order of the Hibernians St. Pat’s Parade & Run – Dogtown
- 17-20 Disney on Ice – Scottrade
- 18-20 Mizuno Mid-East Qualifer – Girls Volleyball – America’s Center
- 26 Undie 5000 5K Run – Forest Park
- 31 Cardinal’s Opening Day – Kiener Plaza & Stadium Pep Rallies

April

- 9 Go! St. Louis Family Fitness Day – Forest Park
- 10 Go! St. Louis Marathon – Soldiers’ Memorial
- 17 Earth Day Festival – Forest Park
- 16-17 South Grand House & Garden Tour – South Grand Neighborhood
- 21 Steppin’ Out for MS Night Walk – Kiener Plaza – Kiener Plaza to Arch & back
- 24 Easter Car Show – Upper Muny Parking Lot – Horseless Carriage Assoc.
- 24 Easter Car Show – Lower Muny Parking Lot – Street Rod Association
- 29 Annie Malone Annual Benefit BBQ – Kiener Plaza
- 30 Variety Club Annual Parade – 10:00 am start – 18th/Chestnut - Tucker - Market
- 30 March of Dimes March for Babies – Forest Park – lower Muny Parking Lot

May

- 1 Delta Gamma Run for Sight – Union Station – start & finish
- 5 Be a Tourist in Your Own Town – CVC – Kiener Plaza
- 7 Micro-Fest Beer Festival – Upper Munny Lot Forest Park
- 7 Cinco de Mayo Festival – Cherokee Street
- 7 Open Streets – City sponsored street event, route & time TBD
- 13 Clean Air Festival – Kiener Plaza
- 15 Girls on the Run 5K – Forest Park
- 15 Annie Malone May Day Parade – Market – Kiener Plaza
- 21 Bark in the Park – Forest Park – Cricket Field
- 21 American Heart Association Walk – Downtown – Busch Stadium
- 21 VA Welcome Home – Soldiers’ Memorial Parks & Streets
- 26 Lift for Life Academy 8th Grade Graduation – Kiener Plaza
- 27-30 Rib Fest – Soldiers’ Memorial Parks & streets
- 28-30 St. Louis African Arts Festival – Forest Park
- 30 Memorial Day Ceremony – Soldiers’ Memorial Building

June

- 4 Old North St. Louis Celebration & Parade – Opening the Farmers Market
- 4 Treasure Day @ Soldiers’ Memorial Museum
- 5 Flag Retirement – Soldiers’ Memorial Building
- 6 Make Tracks for the Zoo Run – Forest Park – 2700 attendance
- 10-11 Heritage Beer Festival – Forest Park – Central Field
- 9-12 Central West End Taste and Art Festival
- 11 Susan G. Komen Race for the Cure – Soldiers’ Memorial – streets west of Tucker
- 13 Buddy Walk – Down Syndrome Assoc. – Forest Park – 4,000 attendance
- 18 Ronald McDonald House Benefit Bike Ride – Forest Park – through City
- 18 PAL 5K Run/Walk – Forest Park
- 18 St. Louis Uncorked Wine & Jazz Festival – Soldiers’ Memorial Parks & streets
- 20-26 US Marine Corps Week in St. Louis – Soldiers’ Memorial – Kiener Plaza
- 25 Walk to D’Feet ALS – Forest Park – 2000 attendance
- 25-26 Pride St. Louis – Tower Grove Park – 30,000 attendance
- 26 Pride Parade – South Grand into Tower Grove Park

July

- 2 Veiled Prophet Parade – 4th & Washington to Market to 18th St.
- 2-4 Fair St. Louis – riverfront and Arch grounds
- TBD Celebrate St. Louis Concert Series – TBD – Fri & Sat.
- 17 U2 Concert – Busch Stadium

August

- 5-7 Wealth and Wellness Festival – Soldiers’ Memorial Parks & Streets – new event
- 13 2nd Annual Community Development Carnival – DeSoto Park – 2,000 attendance
- 13 Moonlight Ramble – downtown & Forest Park roadways
- 21 ThriVe St. Louis 5K Run & Walk – Forest Park – Langenberg Field – 2000 attend
- 26-28 St. Louis Blues Week Festival – Schiller Park & Market between 14th & 15th
- 27-28 International Festival – Tower Grove Park
- 27-28 LOUfest/2011 – Forest Park – Central Field
- 28 Race for a Child – Soulard Boys & Girls Club 5K Run

September

- 2 Gateway Cup Bicycle Races – Lafayette Square
- 3 Gateway Cup Bicycle Races – Francis Park
- 3-5 Greek Festival – Forest Park Blvd. @ Kingshighway
- 3-4 Big Muddy Blues Festival – Laclede’s Landing
- 4 Gateway Cup Bicycle Races – The Hill
- 5 Gateway Cup Bicycle Races – Benton Park
- 5 Labor Day Parade – Soldiers’ Memorial Parks – Olive to Tucker to Market
- 9-11 Hispanic Festival – Soldiers’ Memorial Parks
- 10 Fire Engine Parade & Rally – Jefferson & Washington Ave to Lenore K. Sullivan
- 10 Foxy Fest Concert – Ticketed event – Forest Park – 5,000 attendance
- 16 VA POW/MIA Ceremony – Soldiers’ Memorial
- 16 Balloon Glow – Forest Park
- 17 St. Louis Symphony Performance – Forest Park Art Hill – 5,000 attendance
- 17 Great Forest Park Balloon Race – Forest Park
- 23 Light the Night Leukemia Walk – Forest Park, Upper Muniy – 5,000 attendance
- 23-25 Wine Festival – Base of Art Hill Forest Park – Ticketed – 2,000 attendance
- 23-25 Taste of St. Louis – Soldiers’ Memorial Parks & Market
- 23-25 St. Louis Cardinals’ vs Cubs – Final in town weekend of regular season baseball
- 24 Gateway Classic Parade – Market from Tucker east to Broadway to Cole
- 24 Gateway Classic Football Game – Edward Jones Dome
- 24 Dancin’ In the Streets & Green Homes Festival – Grand Center & Grandel Square
- 30 Harris Stowe Homecoming Parade – route TBD

October

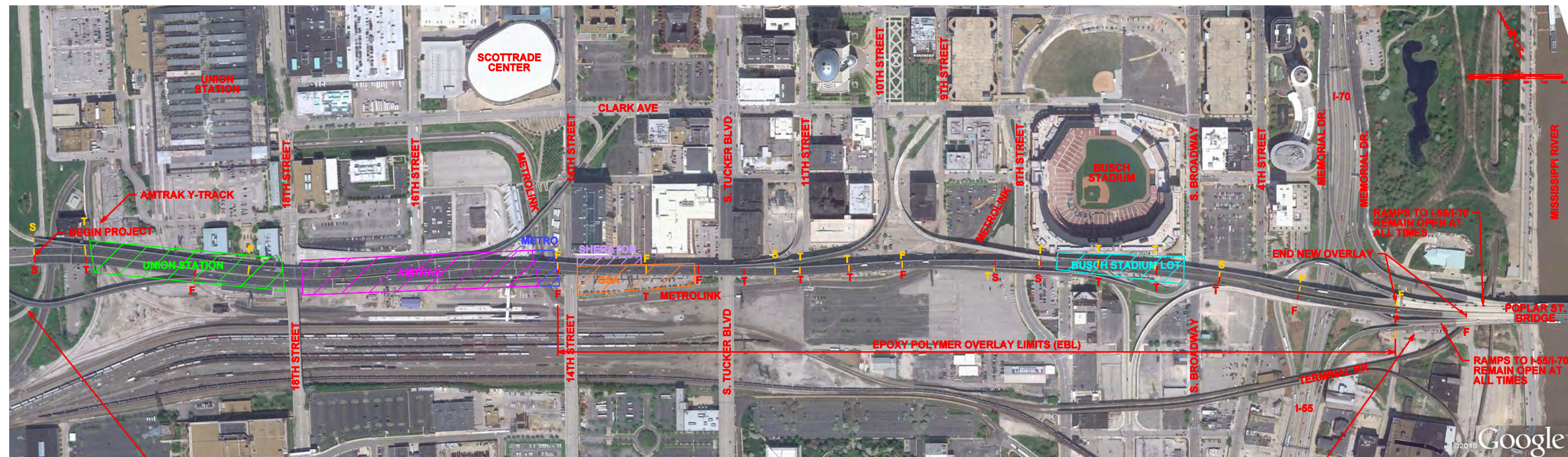
- 1-2 Pedals for a Cause – Siteman Cancer Center Fundraiser – Soldiers’ Memorial Parks
- 2 SHARE Walk to Remember – Langenberg Field Forest Park – 2000 attend
- 2 Juvenile Diabetes Walk to Cure Diabetes – Forest Park, Muniy Lot – 10,000 attend
- 7-8 VOIEF Barbecue Cookoff – Soldiers’ Memorial Parks & Streets
- 7-9 Oktoberfest – Lyon’s Park
- 8 Open Streets – City sponsored street event – route & time TBD
- 8 Walk Now for Autism – Forest Park – 20,000 attendance
- 16 GO! St. Louis 10k Halloween Run – Soldiers’ Memorial Parks & Streets
- 23 Rock ‘n Roll Marathon – route & start/finish to be determined
- 29 Making Strides Against Breast Cancer – 5K – Forest Park

November

- 5 Veterans' Day Parade & Ceremony – Soldiers' Memorial
- 11 American Legion Veterans' Day Ceremony – Soldiers' Memorial
- 18 Holiday Festival of Lights – Kiener Plaza
- 23 Guns and Hoses – Scottrade Center
- 24 Christmas in St. Louis Holiday Parade – Washington & 4th to Market to 14th Street
- 25-27 MSHSAA – Show-Me Bowl – High School Football Championships – Dome

December

- TBD Holiday Magic – America's Center
- 21 Busch Braggin' Rights – Missouri vs Illinois Basketball – Scottrade Center
- 31 First Night – Grand Center



AVAILABLE STAGING AREA

EXPANSION JOINT KEY	
—	EBL
—	WBL
S	Silicone Joint
T	Strip Seal
F	Finger Plate

HORNER & SHIFRIN, INC.
ENGINEERS



AVAILABLE STAGING AREA