



DEPARTMENT OF THE ARMY
KANSAS CITY DISTRICT, CORPS OF ENGINEERS
700 FEDERAL BUILDING
KANSAS CITY, MISSOURI 64106-2896

Handwritten notes and stamps in the top right corner, including "GWV" and "MUK".

REPLY TO
ATTENTION OF:

July 26, 1995

Eastern Project Section
(93-00264)

Mr. Joe Mickes, Chief Engineer
Missouri Highway and Transportation
Department
State Highway Building
P.O. Box 270
Jefferson City, Missouri 65102



Dear Mr. Mickes:

Permit No. 93-00264 has been executed. One copy is enclosed for your records and one copy has been retained for our files. Also, an ENG Form 4336, Notice of Authorization, is enclosed and should be conspicuously displayed at the site of work. When you are ready to begin work, it is necessary that you contact our Jefferson City Regulatory Field Office by writing to the U.S. Army Corps of Engineers, 631 West Main, Jefferson City, Missouri 65101, or by calling 314-634-2248.

Sincerely,

Robert E. Morris
Colonel, Corps of Engineers
District Engineer

Enclosures

Copies Furnished:

- Environmental Protection Agency,
Wetlands Protection Section w/enclosures
- U.S. Fish and Wildlife Service,
Columbia, Missouri w/enclosures
- Missouri Department of Natural
Resources w/enclosures
- Missouri Department of Conservation
w/enclosures
- U.S. Coast Guard
w/enclosures
- Federal Highway and Transportation Department
w/enclosures

DEPARTMENT OF THE ARMY PERMIT

Permittee Missouri Highway and Transportation Department

Permit No. 93-00264

Issuing Office U.S. Army Engineer District, Kansas City

NOTE: The term "you" and its derivatives, as used in this permit, means the permittee or any future transferee. The term "this office" refers to the appropriate district or division office of the Corps of Engineers having jurisdiction over the permitted activity or the appropriate official of that office acting under the authority of the commanding officer.

You are authorized to perform work in accordance with the terms and conditions specified below, and with the plans and drawings attached hereto which are incorporated in and made a part of this permit.

Project Description: Proposed work: Place fill material in and/or bridge several creeks and wetland areas to construct a multilane freeway and Missouri River bridge crossing. Place fill, in the form of concrete piers to bridge the wetland area associated with Creve Coeur Creek and the upper part of Creve Coeur Lake: W-20, 0.09 acres; W-21, 2.0 acres; and W-22, 2.9 acres. Place earthen fill material to cross W-19, 8.4 acres. Place earthen fill material to cross: W-15, 0.3 acres; and W-16, 0.14 acres. Place earthen fill material or concrete to cross or bridge: W-14, 0.5 acres; W-9, 0.1 acres; W-10, 0.15 acres; W-11, 0.1 acres; W-12, 0.2 acres; W-13, 0.47 acres; W-8, 2.0 acres; W-7, 0.2 acres; W-6, 0.2 acres; W-5, 0.3 acres; W-4, 0.15 acres; W-3, 0.18 acres; and W-1, 0.10 acres. Place an undetermined amount of concrete and earthen fill to cross six tributaries to Dardenne Creek and bridge crossings of Dardenne Creek, and Crooked Creek.

Project Drawings: Sheets 1 of 4, 2 of 4, 3 of 4, and 4 of 4, dated 6 June 1995.

Project Location: The project crosses the Missouri River, Crooked Creek, Dardenne Creek, Creve Coeur Creek and Lake, several unnamed tributaries to these waters and adjacent wetlands. Proceeding from the terminus of Page Avenue at Bennington Place in St. Louis County, Missouri, to Route 40/61 in St. Charles County, Missouri, over a distance of approximately 20.5 miles. (The Missouri River bridge crossing at approximately river mile 33.0 is under the U.S. Coast Guard jurisdiction.)

Permit Conditions:

General Conditions:

1. The time limit for completing the work authorized ends on 31 December 2005. If you find that you need more time to complete the authorized activity, submit your request for a time extension to this office for consideration at least one month before the above date is reached.
2. You must maintain the activity authorized by this permit in conformance with the terms and conditions of this permit. You are not relieved of this requirement if you abandon the permitted activity, although you may make a good faith transfer to a third party in compliance with General Condition 4 below. Should you wish to cease to maintain the authorized activity or should you desire to abandon it without a good faith transfer, you must obtain a modification of this permit from this office, which may require restoration of the area.
3. If you discover any previously unknown historic or archeological remains while accomplishing the activity authorized by this permit, you must immediately notify this office of what you have found. We will initiate the Federal and state coordination required to determine if the remains warrant a recovery effort or if the site is eligible for listing in the National Register of Historic Places.

4. If you sell the property associated with this permit, you must obtain the signature of the new owner in the space provided and forward a copy of the permit to this office to validate the transfer of this authorization.
5. If a conditioned water quality certification has been issued for your project, you must comply with the conditions specified in the certification as special conditions to this permit. For your convenience, a copy of the certification is attached if it contains such conditions.
6. You must allow representatives from this office to inspect the authorized activity at any time deemed necessary to ensure that it is being or has been accomplished in accordance with the terms and conditions of your permit.

Special Conditions:

See continuation sheets, pages 4, 5, 6, and 7 of this document.

Further Information:

1. Congressional Authorities: You have been authorized to undertake the activity described above pursuant to:
 - () Section 10 of the Rivers and Harbors Act of 1899 (33 U.S.C. 403).
 - (X) Section 404 of the Clean Water Act (33 U.S.C. 1344).
 - () Section 103 of the Marine Protection, Research and Sanctuaries Act of 1972 (33 U.S.C. 1413).
2. Limits of this authorization.
 - a. This permit does not obviate the need to obtain other Federal, state, or local authorization required by law.
 - b. This permit does not grant any property rights or exclusive privileges.
 - c. This permit does not authorize any injury to the property or rights of others.
 - d. This permit does not authorize interference with any existing or proposed Federal project.
3. Limits of Federal Liability. In issuing this permit, the Federal Government does not assume any liability for the following:
 - a. Damages to the permitted project or uses thereof as a result of other permitted or unpermitted activities or from natural causes.
 - b. Damages to the permitted project or uses thereof as a result of current or future activities undertaken by or on behalf of the United States in the public interest.
 - c. Damages to persons, property, or to other permitted or unpermitted activities or structures caused by the activity authorized by this permit.
 - d. Design or construction deficiencies associated with the permitted work.

e. Damage claims associated with any future modification, suspension, or revocation of this permit.

4. Reliance on Applicant's Data: The determination of this office that issuance of this permit is not contrary to the public interest was made in reliance on the information you provided.

5. Reevaluation of Permit Decision. This office may reevaluate its decision on this permit at any time the circumstances warrant. Circumstances that could require a reevaluation include, but are not limited to, the following:

a. You fail to comply with the terms and conditions of this permit.

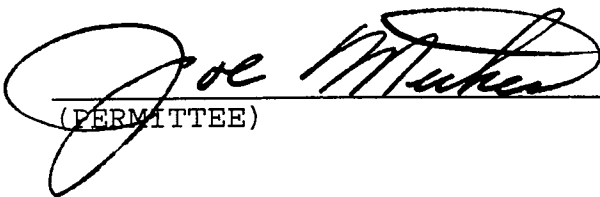
b. The information provided by you in support of your permit application proves to have been false, incomplete, or inaccurate (See 4 above).

c. Significant new information surfaces which this office did not consider in reaching the original public-interest decision.

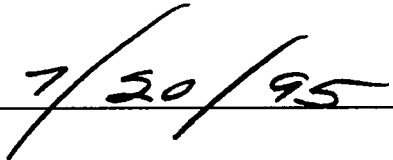
Such a reevaluation may result in a determination that it is appropriate to use the suspension, modification, and revocation procedures contained in 33 CFR 325.7 or enforcement procedures such as those contained in 33 CFR 326.4 and 326.5. The referenced enforcement procedures provide for the issuance of an administrative order requiring you to comply with the terms and conditions of your permit and for the initiation of legal action where appropriate. You will be required to pay for any corrective measures ordered by this office, and if you fail to comply with such directive, this office may in certain situations (such as those specified in 33 CFR 209.170) accomplish the corrective measures by contract or otherwise and bill you for the cost.

6. Extensions. General condition 1 establishes a time limit for the completion of the activity authorized by this permit. Unless there are circumstances requiring either a prompt completion of the authorized activity or a reevaluation of the public interest decision, the Corps will normally give favorable consideration to a request for an extension of this time limit.

Your signature below, as permittee, indicates that you accept and agree to comply with the terms and conditions of this permit.

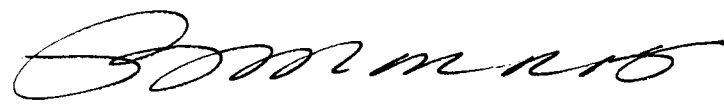


(PERMITTEE)




(DATE)

This permit becomes effective when the Federal official, designated to act for the Secretary of the Army, has signed below.



(DISTRICT ENGINEER)
ROBERT E. MORRIS



(DATE)

When the structures or work authorized by this permit are still in existence at the time the property is transferred, the terms and conditions of this permit will continue to be binding on the new owner(s) of the property. To validate the transfer of this permit and the associated liabilities associated with compliance with its terms and conditions, have the transferee sign and date below.

(TRANSFEREE)

(DATE)

Special Conditions:

- a. If any part of the authorized work is performed by a contractor, before starting work you must discuss the terms and conditions of this permit with the contractor; and, you must give a copy of this entire permit to the contractor.
- b. You must use clean, uncontaminated materials for fill in order to minimize excessive turbidity by leaching of fines, as well as to preclude the entrance of deleterious and/or toxic materials into the waters of the United States by natural runoff or by leaching.
- c. You must dispose of excess concrete and wash water from concrete trucks and other concrete mixing equipment in a nonwetland area above the ordinary high water mark and at a location where the concrete and wash water cannot enter the water body or an adjacent wetland area.
- d. You must excavate, dredge and/or fill in the watercourse in a manner that will minimize increases in suspended solids and turbidity which may degrade water quality and damage aquatic life outside the immediate area of operation.
- e. You must immediately remove and properly dispose of all debris during every phase of the project in order to prevent the accumulation of unsightly, deleterious and/or toxic materials in or near the water body.
- f. You must not dispose of any construction debris or waste materials below the ordinary high water mark of any water body, in a wetland area, or at any location where the materials could be introduced into the water body or an adjacent wetland as a result of runoff, flooding, wind, or other natural forces.
- g. You must store all construction materials, equipment, and/or petroleum products, when not in use, above anticipated high water levels.
- h. You must restrict the clearing of timber and other vegetation to the absolute minimum required to accomplish the work.
- i. You must not discharge fill or dredged material or excavate below water surfaces from April 1 to June 15 unless you obtain written approval in advance from the Kansas City District. In addition, you must excavate during periods of low or average water levels.
- j. Upon completion of earthwork operations, you must seed, replant or otherwise protect from erosion all fills in the water or on shore, and other areas onshore disturbed during construction. If seeding does not successfully vegetate the disturbed areas by the end of the first growing season, you must implement alternate measures, such as placing riprap, slope terracing with untreated railroad ties, gabions or concrete blocks, or additional vegetative plantings, to protect the disturbed areas from further erosion. You must contact the Kansas City District (KCD), Regulatory Branch, prior to beginning work on any additional erosion control measures so that a determination can be made whether further authorization will be required.
- k. You must provide to the KCD, Regulatory Branch, for review and approval prior to construction, your proposal to obtain borrow material for the project from contamination free sources, or you must provide proposals and testing data that indicate it is reasonable to believe that the material is not contaminated. If there is reasonable probability of chemical contamination, you must provide proposals and testing data indicating that the proposed borrow sites meet the criteria of 40 CFR 230.10(b), (c) and (d). Based on the analysis of the fill material, you might be required by the Corps to provide information related to testing of the disposal site or provide analysis of potential changes that would be expected to occur at the disposal site if the discharge were to be made as proposed.

Special Conditions (con't):

- l. You must construct the proposed project in a manner that will not increase the base flood elevations in the floodways and which does not exceed regulatory limits in the base flood elevations in the floodway fringes of Creve Coeur Creek/Lake, the Missouri River and Dardenne Creek. Prior to initiating any construction activity you must conduct and furnish a detailed hydraulic analysis of the flows and water surface elevations to the KCD, Regulatory Branch, and the Federal Emergency Management Agency (FEMA) during early design stages. You must contact KCD, Regulatory Branch, regarding the cumulative effects of previous downstream construction on the FEMA regulatory floodway and the appropriate hydraulic models to be used for the specific reach. In addition, you must construct the project in a manner that will not reduce the protection level for the 500-year event for the St. Louis County Water Plant and the Metropolitan St. Louis Sewer District's treatment facility, or you must provide 500-year flood protection for the plant and the facility.

- m. You must design, construct and maintain the project with a collector system that prevents degradation of the aquatic environment in the project area by road runoff. You must submit plans for the bridge and roadway runoff collection and processing system for review and final approval by the Corps in coordination with the resource agencies.

- n. Prior to initiating any construction activity in the Corps jurisdiction, you must provide the proposed final project layout, configuration, and location plans for review and approval by the KCD, Regulatory Branch. This information should include the entire roadway layout including the overall location of the highway, bridge crossings, borrow areas, drainage ditches and patterns and any temporary construction impact areas.

- o. Prior to initiating any construction activity in the Corps jurisdiction, you must submit for written approval, a wetland and riparian woods development, monitoring and management plan for the mitigation site. Any portion of the mitigation plan which requires Section 404 authorization must be applied for and authorized prior to initiating any construction activity in the Corps jurisdiction. We will coordinate this review with the appropriate state and Federal agencies. You must provide wetland and riparian woods mitigation at a minimum ratio of 1 to 1 for acres. Development of the mitigation proposal must take into consideration function and values and wetland buffers as appropriate. Mitigation is required for impacts to all jurisdictional wetlands, aquatic and riparian habitats, including impacts associated with the Missouri River bridge. If wetland mitigation is proposed on park mitigation lands at Little Creve Coeur Lake, the exact location must be identified and defined. The development plan must include a plan view drawing and cross sections detailing the features of the plan, water budget and preconstruction habitat evaluation. The mitigation development must be conducted as approved and must begin before or concurrently with project construction. The mitigation development must be complete before completion of project construction. The monitoring plan must include, at a minimum, an annual report, with color photographs, to be provided to the KCD, Regulatory Branch. The mitigation site must be monitored for a minimum of 20 years, unless the KCD, Regulatory Branch, informs you, in writing, that it is satisfied that the mitigation area is stable and functioning. The management plan must include provisions to correct problems to insure that the site functions as designed. You must submit a written schedule, within 60 days of the execution of this permit, detailing mitigation plan submission dates, the proposed project construction and mitigation development dates, monitoring and management plan submission dates and project completion dates and update this schedule as conditions change.

- p. You must comply with the terms and conditions set forth in the Memorandum of Agreement (MOA) Among the Federal Highway Administration, the Advisory Council on Historic Preservation, the Missouri Highway and Transportation Department, and the Missouri Historic Preservation Officer for the Construction of the Route D Project in St. Louis and St. Charles Counties, Missouri (MHTD Job No. J6U0803). A copy of this MOA has been attached and made a part of this permit.

Special Conditions (con't):

q. You must accomplish the work in the wetland areas that will be bridged in a manner that will minimize impacts to these areas. This should include, but not be limited to, locating storage and staging areas outside wetlands, working on mats, working during dry periods, and minimizing clearing activities. Prior to initiating any work in wetlands, you must provide a plan for review and approval by the KCD, Regulatory Branch.

r. You must not connect more than a two lane road to the Page Avenue Extension in the Missouri River floodplain in St. Louis County or construct the Page Avenue River Valley Road interchange in such a manner that it can be used to connect a road of the size of an extended Earth City Expressway/Highway 141. Unless the conditions in paragraph r.(2) below are met, all measures necessary to connect a road larger than the existing River Valley Road/Creve Coeur Mill Road are prohibited such as:

- additional or wider openings in the Page Avenue Extension overpass
- additional embankment over that needed for River Valley Road
- extra or wider Page Avenue Extension lanes
- additional right-of-way in any way necessary to connect Earth City Expressway or upgraded Highway 141

(1) Prior to construction of the River Valley Road interchange, you must submit final layout plans for that segment of the Page Avenue Extension and receive approval by the Kansas City District, Regulatory Branch, to proceed with construction.

(2) In the event an extension of the new Earth City Expressway/Highway 141 is proposed that would tie into the Page Avenue Extension, you must prepare an EIS or assure that an EIS is prepared to assess the potential significant impacts to the Missouri River floodplain in St. Louis County that may occur if a road equivalent to ECE or Highway 141 were connected to the Page Avenue Extension in the vicinity of River Valley Road interchange.

s. You must not connect any facility to the Page Avenue Extension that increases flood protection except as follows. In the event that a facility that would increase flood protection is proposed that would connect to the Page Avenue Extension, you must prepare an EIS or assure that an EIS is prepared to assess the potential significant impacts to the Missouri River floodplain in St. Louis County that may occur if increased flood protection is provided to this area.

t. You must design the bridge over Creve Coeur Lake Memorial Park (CCLMP) and the section of the roadway crossing through the additional park mitigation land to meet all the current applicable noise level standards. You must utilize "state of the art" noise reduction systems. Prior to initiating any construction activity in the Corps jurisdiction, you must provide to the KCD, Regulatory Branch, a comprehensive report covering current noise level standards and any reduction systems, which clearly shows that the system that will be implemented is the current "state of the art" system.

u. You must coordinate with KCD, Regulatory Branch, the review of any development proposed by the design committee required by Section 601 of the Pipeline Safety Act of 1992. This includes any development proposal on existing park land, additional lands acquired to meet the requirements of Section 601 of the Pipeline Safety Act of 1992 and for the park mitigation area required by Section 6(f) of the Land and Water Conservation Fund Act. At the earliest possible stage, the KCD, Regulatory Branch, should receive preliminary plans to allow preapplication consultation and allow determination of jurisdiction and potential permit requirements.

v. You must coordinate the review of placement and configuration of bridging structures, both within the Missouri River floodplain and at stream and backwater crossings, with the U.S. Fish and Wildlife Service, Missouri Department of Conservation and the KCD, Regulatory Branch. Final designs for these structures must include measures to avoid adverse impacts to wetland and aquatic habitats, and enhance

Special Conditions (con't):

existing habitat conditions, to the extent practicable. The Missouri River bridge design must include a drainage system to preclude, in so far as is practicable, contaminated runoff and hazardous material spills from entering the wetland and aquatic environment of the Missouri River.

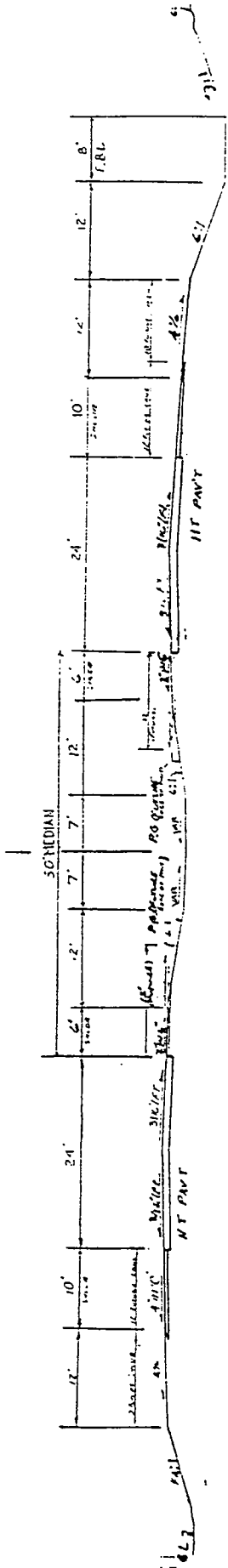
w. Prior to initiating any construction activity, you must submit for review and approval by KCD, a study of sinkhole drainage in the project area and your plan to prevent impacts to municipal and private groundwater supplies.

x. You must coordinate the proposed work with the utility companies during design and construction of the project to insure placement of transmission lines is given adequate consideration and that disruption of service is held to a minimum.

ACREAGE AND LOCATION OF JURISDICTIONAL WETLANDS IN RED ALIGNMENT

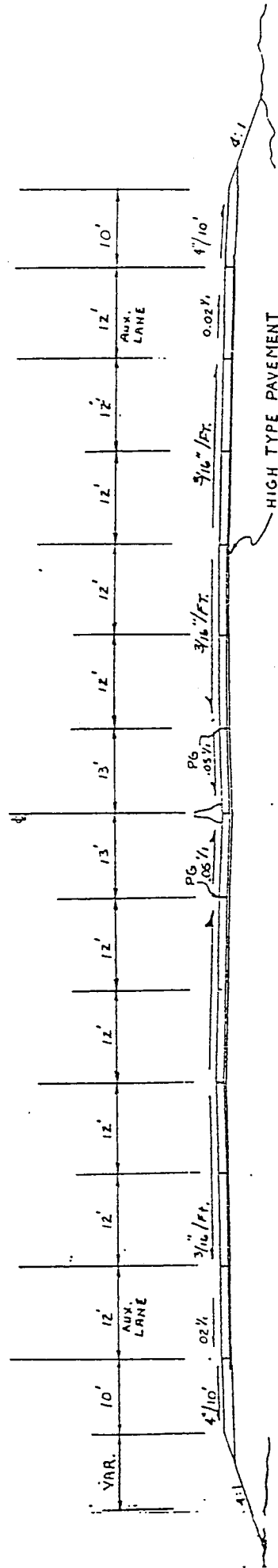
Site No.	Location/Description	App. Acreage	Type
W-1	Former farm pond near Highway 40-61 and Orf Road	0.10	Seasonally flooded basin
W-3	Former farm pond near Route N and Bryan Road	0.18	Seasonally flooded basin
W-4	Former farm pond along Bryan Road approx. 900' North of Route N	0.15	Seasonally flooded basin
W-5	Shallow pond, near intersection of Routes N and K	0.3	Emergent wetland
W-6	Tributary to Dardenne Creek near Highway N	0.2	In-stream wetland
W-7	Along Crooked Creek in Dardenne Bottoms	0.2	Wet woods
W-8	North of Gutermuth Road	2.0	Emergent wetlands
W-9	NE Corner of Highway 94 and Route N	0.1	Wet woods
W-10	NW Corner of Highway 94 and Route N	0.15	Wet woods
W-11	1,300' West of Intersection of Highway 94 and Route N	0.1	Seasonally flooded basin
W-12	1,600' West of Intersection of Highway 94 and Route N	0.2	Seasonally flooded basin
W-13	500' NW of Intersection of Highway 94 and Route N	0.47	Emergent wetland
W-14	200' NE of Intersection of Highway 94 and Route N	0.5	Wet woods
W-15	Western Edge of Spring Bend Property	0.3	Sinkhole pond
W-16	Eastern Edge of Spring Bend Property	0.14	Sinkhole pond
W-17	Middle of Jane Downing Island	1.0	Wet woods
W-18	Between River Chute and Levee (Swale & Borrow Pit)	0.9	Wet woods
W-19	Approx. 2,500' West of Creve Coeur Mill Road at Base of Terrace	8.4	Agricultural wetland
W-20	Creve Coeur Creek at CCLMP Crossing	0.09	Wet woods
W-21	Wooded Area at CCLMP Crossing	2.0	Wet woods
W-22	Cattail/Buttombush Marsh at CCLMP Crossing	2.9	Emergent wetland
	Total Wetland Acres in Red Alignment	20.38	

APPLICATION NO. 93-00264
 BY MISSOURI HIGHWAY & TRANSPORTATION DEPT.
 FOR FILL ASSOCIATED WITH ROAD CONSTRUCTION
 CROSSING THE MISSOURI RIVER, CROOKED CREEK,
 DARDENNE CREEK, CREVE COEUR CREEK & LAKE,
 UNNAMED TRIBUTARIES & ADJACENT WETLANDS
 ST. LOUIS & ST. CHARLES COUNTIES, MISSOURI
 SHEET 2 of 4
 DATED. 6/6/05



TYPICAL SECTION ON TANGENT

FROM RTE. 40 TO RTE. 94
IN ST. CHARLES COUNTY

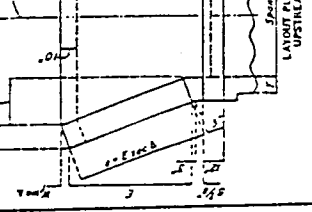
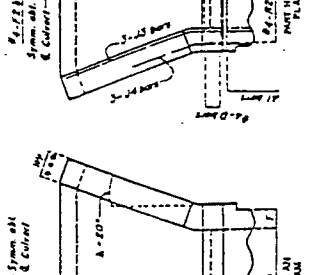
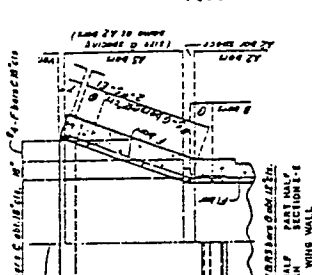
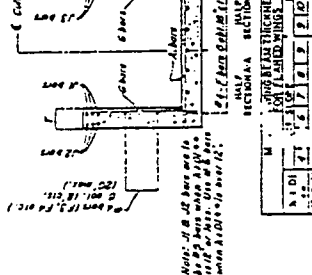
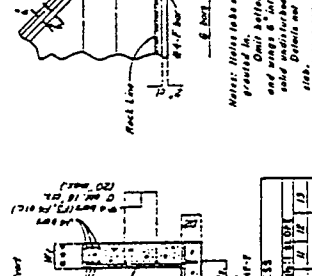
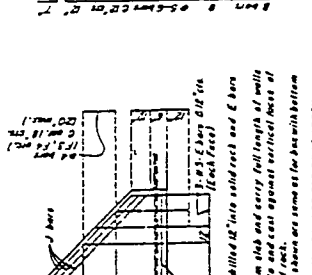
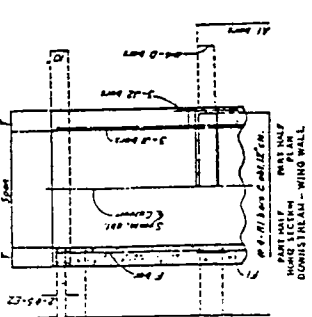
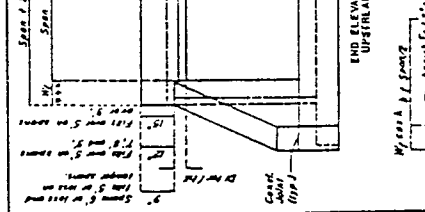
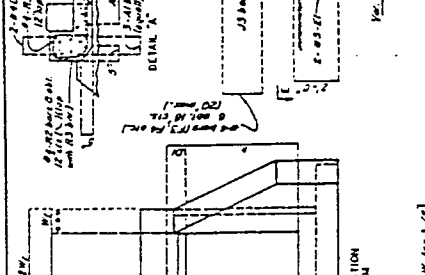
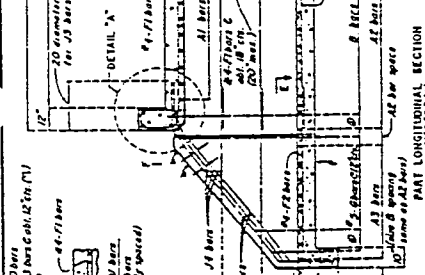
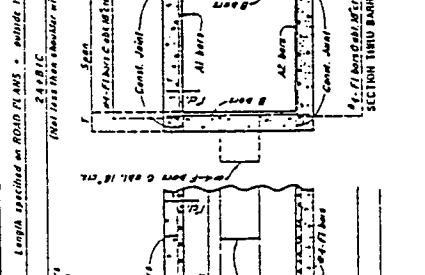
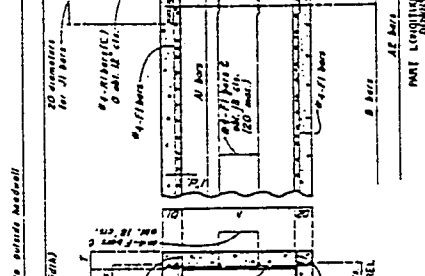
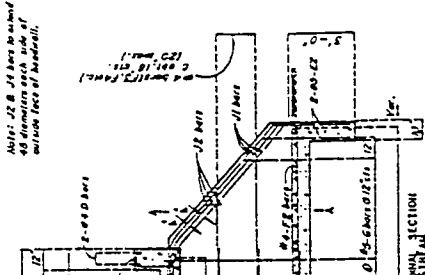
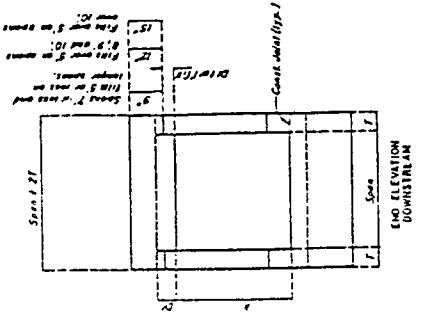


SECTION ON TANGENT
ROUTE D

5 TA. 685+00 TO 5 TA. 995+00

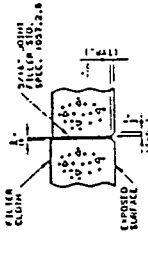
FROM WEST OF MISSOURI RIVER (ST. CHARLES COUNTY)
TO EAST OF MISSOURI RIVER (ST. LOUIS COUNTY)

APPLICATION NO. 93-00264
BY MISSOURI HIGHWAY & TRANSPORTATION DEPT.
FOR FILL ASSOCIATED WITH ROAD CONSTRUCTION
CROSSING THE MISSOURI RIVER, CROOKED CREEK,
DARDENNE CREEK, CREVE COUER CREEK & LAKE,
UNNAMED TRIBUTARIES & ADJACENT WETLANDS
ST. LOUIS & ST. CHARLES COUNTIES, MISSOURI
SHEET 3 of 4
DATED: 6/6/95

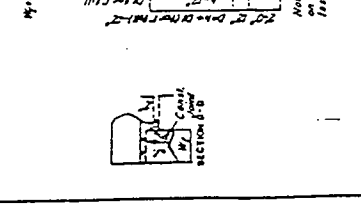
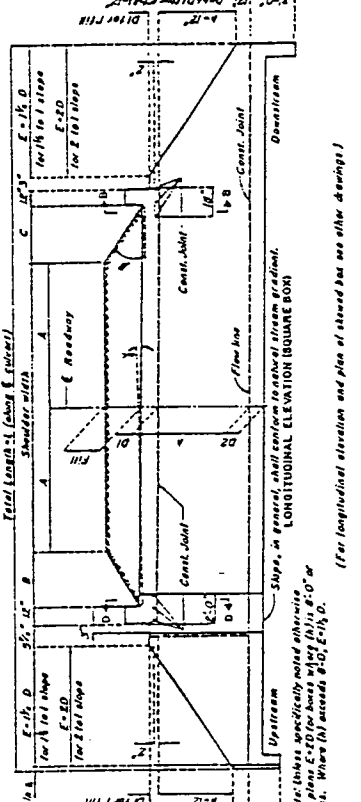
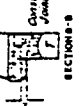


GENERAL NOTES:
 REINFORCING STEEL STRESS = 20,000 LBS. PER SQ. IN.
 CONCRETE STRESS = 1,200 LBS. PER SQ. IN.
 EARTH = 120 LBS.
 EQUIVALENT FLOOD PRESSURE = 30 LBS.
 ALL CONCRETE SHALL BE CLASS "B".
 MINIMUM CLEARANCE TO REINFORCING STEEL SHALL BE 1 IN. UNLESS OTHERWISE SHOWN.
 LAP ALL LONGITUDINAL BARS 1 FT. AT SPACES.
 (1) - VARIES, NOT MORE THAN 1 FT.

MISSOURI HIGHWAY AND TRANSPORTATION COMMISSION
CONCRETE BOX CULVERTS
 5' TO 14' SPANS
 (11520 LOADING)
 REVISED: AUGUST 1981
 DRAWING 703.21E
 SHEET 1 OF 3



DETAIL OF TRANSVERSE JOINT THRU BARREL OR CULVERT
 YOU MUST USE A TRANSVERSE JOINT WITHIN THE BARREL OR CULVERT. THE JOINT SHALL BE LOCATED AT THE CENTER OF THE BARREL OR CULVERT. THE JOINT SHALL BE LOCATED AT THE CENTER OF THE BARREL OR CULVERT. THE JOINT SHALL BE LOCATED AT THE CENTER OF THE BARREL OR CULVERT.

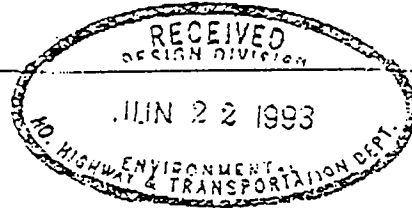


APPLICATION NO. 93-00264
 BY MISSOURI HIGHWAY & TRANSPORTATION DEPT.
 FOR FILL ASSOCIATED WITH ROAD CONSTRUCTION
 CROSSING THE MISSOURI RIVER, CROOKED CREEK,
 DARDENNE CREEK, CREVE COUER CREEK & LAKE,
 UNNAMED TRIBUTARIES & ADJACENT WETLANDS
 ST. LOUIS & ST. CHARLES COUNTIES, MISSOURI
 SHEET 4 OF 4 DATE: 6/6/95

6-4-93

Advisory Council On Historic Preservation

The Old Post Office Building
1100 Pennsylvania Avenue, NW, #809
Washington, DC 20004



NOV 18 1992

RECEIVED	
NOV 18 1992	
✓	DESIGN
✓	ENVIRONMENTAL
✓	TRANSPORTATION
	FILE
	ADM.
	PER
✓	D.E.A.
	D.K.B.
	IT
	ENV
	GEN
	ADVIS
✓	STATE
	FILE

Mr. Gerald J. Reihsen, P.E.
Division Administrator
Federal Highway Administration
P. O. Box 1787
Jefferson City, MO 65102

REF: Page Avenue Extension
St. Louis and St. Charles Counties
Memorandum of Agreement

Dear Mr. Reihsen:

Enclosed is your copy of the fully executed Memorandum of Agreement for the referenced project. By carrying out the terms of the Agreement, you will have fulfilled your responsibilities under Section 106 of the National Historic Preservation Act and the Council's regulations. Copies of the Agreement have also been sent to the Missouri State Historic Preservation Officer and the Missouri Highway and Transportation Department. The original will remain on file at our office.

Thank you for your cooperation.

Sincerely,

Don L. Klima
Director, Eastern Office
of Project Review

MEMORANDUM OF AGREEMENT
AMONG THE FEDERAL HIGHWAY ADMINISTRATION,
THE ADVISORY COUNCIL ON HISTORIC PRESERVATION,
THE MISSOURI HIGHWAY AND TRANSPORTATION DEPARTMENT,
AND THE MISSOURI STATE HISTORIC PRESERVATION OFFICER
FOR THE CONSTRUCTION OF THE ROUTE D PROJECT
IN ST. LOUIS AND ST. CHARLES COUNTIES, MISSOURI
(MHTD JOB NO. J6U0803)

WHEREAS, the Federal Highway Administration (FHWA), Department of Transportation, proposes to fund the construction of Route D (MHTD Job No. J6U0803) in St. Louis and St. Charles Counties, Missouri and,

WHEREAS, the FHWA has determined that the construction of Route D may have an effect upon properties included in or eligible for inclusion in the National Register of Historic Places (NRHP) and has consulted with the Advisory Council on Historic Preservation (Council) and the Missouri State Historic Preservation Officer (SHPO) pursuant to Section 800.13 of the regulations (36 CFR Part 800) implementing Section 106 of the National Historic Preservation Act (16 U.S.C. 470f), and

WHEREAS, the standards, guidelines, and definitions given in Appendix A are applicable throughout this Memorandum of Agreement (MOA);

NOW, THEREFORE, the FHWA, the Council, the Missouri Highway and Transportation Department (MHTD), and the SHPO agree that this undertaking shall be implemented in accordance with the following stipulations to satisfy the FHWA's Section 106 responsibility in order to take into account the effect of the undertaking on prehistoric and historic properties listed in Appendix B, Appendix C, and Appendix D.

Stipulations

The FHWA ensures that the following measures shall be carried out.

1. The FHWA shall ensure that a cultural resources survey of the Route D Project (MHTD Job No. J6U0803) is completed in a manner consistent with the Secretary of the Interior's Standards and Guidelines for Identification (43 FR 44720-23) and taking into account the National Park Service Publication, The Archaeological Survey: Methods and Uses, and the Missouri SHPO's Guidelines for Contract Cultural Resource Survey Reports and Professional Qualifications (January 1986). This cultural resources survey has been completed for most of the project area and to the extent possible given inaccessibility to certain private properties. The cultural resources survey includes a survey of historic and prehistoric archaeological sites, historic sites, and historic architectural sites. A final report describing the results of the survey and meeting the standards of the SHPO shall be submitted to the SHPO for review and approval. The FHWA shall evaluate properties identified through the survey in accordance with 36 CFR Part 800.4(c). If the survey results in the identification of properties that are eligible for the National Register, the FHWA shall comply with 36 CFR Part 800.5.

h. The FHWA shall ensure that adequate laboratory time, space, and funds are available for limited analysis of any osteological, cultural, and biological materials recovered, as stipulated in the Secretary of Interior's Standards and Guidelines.

i. A repository within the State of Missouri for adequately curating all recovered materials and data will be selected by the FHWA in consultation with the SHPO, in accordance with 36 CFR 79.

j. The FHWA shall ensure that any human remains excavated during data recovery operations are reburied subsequent to analysis of their biological/morphological characteristics within twelve (12) months after the completion of the field work in a location where their subsequent disturbance is unlikely and in a manner as similar as possible to the manner in which they were originally interred, pursuant to Missouri Stat. RSMO 194.400, as interpreted by the SHPO.

4. For those sites for which the FHWA and the SHPO are not in agreement concerning National Register eligibility, the FHWA will request a formal determination from the Keeper of the National Register, in accordance with the regulations outlined in 36 CFR Part 63 (as incorporated under 36 CFR 60, August, 1986). Those sites which the Keeper determines eligible will be treated in accordance with Stipulation Number Three.

5. The FHWA shall ensure that all work pursuant to this MOA is carried out by, or under the direct supervision of, a person or persons meeting the minimum qualifications set forth in the Secretary of the Interior's Standards and Guidelines for Archaeology and Historic Preservation.

6. If, at any time during the implementation of the measures stipulated in this MOA, an objection to any such measure should be raised by any of the consulting parties, the FHWA shall request the further comments of the Council pursuant to 36 CFR Section 800.5e.

7. In accordance with the NRHP procedures (36 CFR Part 800), the FHWA shall forward documentation concerning the condition and significance of any site at which data recovery operations are undertaken to the Keeper of the National Register within one year following the completion of the data recovery, with recommendations for nomination, boundary changes, or removal from National Register eligibility, as appropriate.

8. Failure to carry out the terms of this MOA requires that the FHWA again request the Council's comments in accordance with 36 CFR Part 80. If the FHWA cannot carry out the terms of the MOA, it will not take or sanction any action or make any irreversible commitment that would result in adverse effects with respect to the National Register or eligible properties covered by the agreement, or would foreclose the Council's consideration of modifications or alternatives that could avoid or mitigate the adverse effects until the commenting process has been completed.

9. Within 90 days after carrying out the terms of the MOA, the FHWA shall provide a written report to all signatories to the MOA on the actions taken to fulfill the terms of the MOA.

2. For those sites which the FHWA and the SHPO agree are not eligible for inclusion to the National Register of Historic Places (NRHP), no further investigations will be required and the proposed project may proceed in those areas.

3. The FHWA shall ensure that a mitigation plan is developed in consultation with the SHPO for those properties which the FHWA and the SHPO agree are eligible for inclusion to the NRHP. The plan shall be consistent with the standards, guidelines, and regulations incorporated herein as Appendix A and with the Secretary of the Interior's Standards for Rehabilitation and Guidelines for Rehabilitating Historic Buildings (U.S. Department of the Interior 1983).

The mitigation plan should include but not be limited to the following:

a. The plan will discuss the mitigation, or avoidance, of any effects to historic architectural properties determined eligible for inclusion to the NRHP.

b. Prior to any effect on an historic structure eligible to the NRHP, the FHWA will contact the National Park Service (NPS) Regional Office to determine what level and kind of recordation is required for the property. Unless otherwise agreed to by NPS, the FHWA shall ensure that all documentation is completed and accepted by the Historic American Building Survey (HABS) or the Historic American Engineering Record (HAER) prior to any effect, and that copies of this documentation are made available to the SHPO and appropriate local archives designated by the SHPO. Marketing of historic structures will be part of the mitigation plan.

c. The plan shall discuss the mitigation, or avoidance, of any effects to archaeological sites determined eligible for inclusion to the NRHP. Mitigation of any effects shall be based on a data recovery plan formulated in consultation with the SHPO and in accordance with the standards, guidelines, and regulations incorporated herein as Appendix A.

d. The mitigation plan shall be submitted by the FHWA to the SHPO for 30 days review. Unless the SHPO objects within 30 days after receipt of the plan, the FHWA shall ensure that it is implemented.

e. The FHWA shall take the SHPO's comments into account when implementing the mitigation plan.

f. After data recovery, final reports resulting from actions pursuant to the MOA will be provided to the consulting parties and to the National Park Service for possible submission to the National Technical Information Service. The FHWA shall ensure that such reports are responsive to the current professional standards as per the Secretary of the Interior's Standards and Guidelines.

g. The FHWA will ensure that the consulting parties are provided with interim reports on the status of this MOA every ninety (90) days.

Memorandum of Agreement
Route D
(MHTD Job No. J6U0803)
Page 4 of 4

Execution of this Memorandum of Agreement by the FHWA, the SHPO and the MHTD, and the FHWA's carrying out of its terms, evidences that the FHWA has afforded the Council an opportunity to comment on the Route D Project and its effect on historic properties, and that the FHWA has taken into account the effects of the project on historic properties, in accordance with Section 106 of the National Historic Preservation Act.

Robert W. Bush 11/10/92
Advisory Council on Historic Preservation Date

R. D. Anderson 10-20-92
Federal Highway Administration Date
Department of Transportation

Keith Blackall 29 October 1992
Missouri State Historic Preservation Officer Date

Bob Spurdell 10/21/92
Missouri Highway and Transportation Department Date

APPENDIX A

The following regulations, guidelines and definitions are applicable throughout this Memorandum of Agreement:

Regulations

36 CFR Part 800: Protection of Historic Properties, Regulations of the Advisory Council on Historic Preservation Governing the Section 106 Review Process (final rule Federal Register Vol. 51, No. 169, September 2, 1986).

36 CFR Part 60: Nominations to the National Register of Historic Places (Federal Register Vol. 51, No. 150, August 5, 1986).

36 CFR Part 63: Determination of Eligibility for Inclusion in the National Register of Historic Places (Federal Register Vol. 51, No. 150, August 5, 1986).

36 CFR Part 79: Curation of Federally Owned and Administered Archaeological Collections (Proposed Rule, Federal Register Vol. 52, No. 167, August 28, 1987).

Guidelines

Department of Transportation Guidelines: Procedures for Considering Environmental Impacts (Federal Register Vol. 45, No. 250, December 29, 1980).

National Park Service Guidelines: Guidelines for Federal Agency Responsibilities Under Section 110 of the National Historic Preservation Act (Federal Register Vol. 53, No. 31, February 17, 1988).

Department of the Interior Guidelines: Archaeology and Historic Preservation; Secretary of the Interior's Standards and Guidelines (Federal Register Vol. 48, No. 190, September 29, 1983).

Advisory Council on Historic Preservation Guidelines: Treatment of Archaeological Properties: A Handbook (November, 1980).

Missouri Office of Historic Preservation Guidelines: Guidelines for Contract Cultural Resource Survey Reports and Professional Qualifications (January, 1986).

Definitions

Phase I Survey: An intensive, on-the-ground survey of the proposed project corridor using systematic pedestrian survey, systematic coring techniques such as shovel tests or auger holes, or a combination of these techniques, for the purpose of identifying potential prehistoric, historic, or historic-architectural sites.

Phase II Testing: A systematic program consisting of controlled surface collections and controlled systematic subsurface excavations using either manual or mechanical techniques, or both, for the purpose of determining the significance of an archaeological site or sites in terms of the National Register of Historic Places criteria of eligibility (36 CFR Part 60).

Data Recovery Program: A systematic, extensive and intensive program conducted for the purpose of recovering archaeological data from a National Register-eligible site determined significant for its data content and not for in-place preservation. Such a program will be developed and executed in accordance with a research design accepted by agreement between the FHWA and SHPO.

Research Design: A plan drafted for the purpose of recovering significant archaeological data from a National Register-eligible site and incorporating the analysis of such data into the framework of currently relevant archaeological research topics or questions.

APPENDIX B. PAGE AVENUE PREVIOUSLY REPORTED SITES
JOB NO. J6U0803

<u>SITE NUMBER</u>	<u>SITE AGE</u>	<u>SETTING</u>	<u>ROUTE</u>	<u>DISTANCE TO CENTERLINE</u>	<u>COMMENTS</u>
23SL11	Late Archaic Early Woodland	Slope	Red Green	150	Significance and integrity unknown
23SL118	Prehistoric	Slope	Green	60	Previously destroyed
23SL116	Paleo-Indian Dalton/Early Archaic Late Archaic	Slope	Green	60	Mostly destroyed
23SL591	Late Woodland	Ridgetop	Red	75	Previously destroyed
23SC683	Prehistoric	Slope	Blue-Dashed	60	Most of it previously destroyed
23SC686	Prehistoric/ Historic	Ridgetop	Blue-Dashed	0	Extensively disturbed
23SC684	Prehistoric	Ridgetop	Blue-Dashed	60	Extensively disturbed
23SC685	Prehistoric	Ridgetop	Blue-Dashed	60	Partially disturbed Parts are intact
23SC529	Prehistoric	Ridgetop	Blue-Dashed	300	Previously disturbed
23SC531	Prehistoric	Slope	Blue-Dashed	300	Previously disturbed
23SC535	Prehistoric	Ridgetop	Blue-Dashed	250	Previously disturbed
23SC534	Prehistoric	Ridgetop	Blue-Dashed	300	Previously disturbed
23SC530	Prehistoric	Ridgetop	Blue-Dashed	75	Probably destroyed
23SC532	Prehistoric	Ridgetop	Blue-Dashed	230	Previously disturbed
23SC654	Late Archaic	Slope	Green	0	Probably not NRHP eligible
23SC20	Prehistoric	Floodplain	Red	50	23SC20/23SC Previously tested-not eligible

APPENDIX B. PAGE AVENUE PREVIOUSLY REPORTED SITES
JOB NO. J6U0803

<u>SITE NUMBER</u>	<u>SITE AGE</u>	<u>SETTING</u>	<u>ROUTE</u>	<u>DISTANCE TO CENTERLINE</u>	<u>COMMENTS</u>
23SC488	Middle Archaic Early Woodland	Ridgetop Slope	Red	50	Large site
23SC665	Prehistoric	Floodplain	Green	250	Previously determined-not eligible-Destroyed
23SC604	Prehistoric	Floodplain	Green	0	Previously determined-not eligible
23SC710	Late Woodland Historic	Ridgetop	Green	50	Large site
23SC495	Prehistoric	Slope	Green	0	Large site
23SC537	Historic	Ridgetop	Green	320	House is 125 years old Barn is 150 years old
23SC494	Prehistoric	Ridgetop	Green	300	Small site
23SC609	Late Woodland	Hilltop	Green	0	Boschert Site Previously excavated
23SC656	Late Woodland	Ridgetop	Green	275	Partially impacted

APPENDIX C. PREVIOUSLY UNREPORTED PAGE AVENUE
ARCHAEOLOGICAL SITES AND RECOMMENDATIONS
JOB NO. J6U0803

<u>SITE NO./ FIELD SITE NO.</u>	<u>AGE</u>	<u>SITE SIZE (m²)</u>	<u>ROUTE/ DISTANCE TO CL (m)</u>	<u>COMMENTS</u>	<u>RECOMMENDATIONS</u>
23SL766 Field Site 1	Prehistoric	3500	Red 40	Partially disturbed hilltop setting Moderate artifact density	P-II Testing
23SL767 Field Site 2	Prehistoric	200	Green 0	Completely destroyed	No further work
23SL768 Field Site 4	Prehistoric	2250	Red Mitigation land-200	Will not be impacted	No further work
23SL769 Field Site 5	Middle Archaic	1500	Red Mitigation land-10	Completely destroyed Hilltop setting Will not be impacted Low artifact density	No further work
23SL770 Field Site 6	Middle- Late Woodland	750	Red Mitigation land-10	Partially disturbed Hilltop setting Will not be impacted	No further work
23SL771 Field Site 7	Prehistoric	75	Red Mitigation land-100	Extensively disturbed Hilltop setting Will not be impacted	No further work
23SC805 Field Site 8	Prehistoric	5000	Red 30	Ridgetop setting Cultivated field	P-II Testing
23SC806 Field Site 9	Prehistoric	7500	Red 0	Ridgetop setting Cultivated field	P-II Testing
23SL772 Field Site 11	Prehistoric	100	Red Mitigation land-100	Completely destroyed Ridgetop setting Will not be impacted	No further work
23SL773 Field Site 12	Prehistoric	700	Red Mitigation land-100	Completely destroyed Ridgetop setting Will not be impacted	No further work
23SL774 Field Site 13	Prehistoric	1000	Red Mitigation land-50	Partially destroyed Ridgetop setting Will not be impacted	No further work

APPENDIX C. PREVIOUSLY UNREPORTED PAGE AVENUE
ARCHAEOLOGICAL SITES AND RECOMMENDATIONS
JOB NO. J6U0803

<u>SITE NO./ FIELD SITE NO.</u>	<u>AGE</u>	<u>SITE SIZE (m²)</u>	<u>ROUTE/ DISTANCE TO CL (m)</u>	<u>COMMENTS</u>	<u>RECOMMENDATIONS</u>
23SL775 Field Site 14	Prehistoric	2000	Red Mitigation land-150	Partially destroyed Ridgetop setting Will not be impacted	No further work
23SL776 Field Site 15	Historic	7800	Red Mitigation land	Possible refuse dump Cultivated field High artifact density	P-II Testing Archival research
23SC807 Field Site 16	Prehistoric	5000	Red 100	Ridgeslope setting Cultivated field Very low artifact density	No further work
23SC808 Field Site 17	Prehistoric	11,250	Red 0	Low Ridgetop Cultivated field Partially destroyed Moderate artifact density	P-II Testing
23SC809 Field Site 18	Prehistoric Historic	1000	Red 0	Hillcrest and slope Cultivated field Low artifact density	No further work
23SC810 Field Site 19	Prehistoric	10,000	Red 0	Ridgetop setting Cultivated field	P-II Testing
23SC811 Field Site 20	Historic	625	Red 0	Ridgetop setting Cultivated field Very low artifact density	No further work
23SC812 Field Site 22	Early Archaic	2500	Red 50	Ridgeslope setting Cultivated field Moderate artifact density	P-II testing
23SC813 Field Site 23	Prehistoric	650	Red 70	Ridgeslope setting Cultivated field Low artifact density	No further work
23SC814 Field Site 24	Prehistoric	900	Red 120	Ridgeslope setting Cultivated field Very low artifact density	No further work

APPENDIX C. PREVIOUSLY UNREPORTED PAGE AVENUE
 ARCHAEOLOGICAL SITES AND RECOMMENDATIONS
 JOB NO. J6U0803

<u>SITE NO./</u> <u>FIELD SITE NO.</u>	<u>AGE</u>	<u>SITE</u> <u>SIZE</u> <u>(m²)</u>	<u>ROUTE</u> <u>DISTANCE</u> <u>TO CL (m)</u>	<u>COMMENTS</u>	<u>RECOMMENDATIONS</u>
23SC815 Field Site 25	Prehistoric	900	Red 100	Ridgeslope setting Cultivated field Low artifact density	No further work
23SC816 Field Site 26	Prehistoric	400	Red 70	Ridgeslope setting Cultivated field Low artifact density	No further work
23SC817 Field Site 27	Historic	5625	Red 0	Ridgetop setting Cultivated field Probably assoc. with standing structure	No further work
23SC818 Field Site 28	Prehistoric	400	Red 60	Ridgeslope setting Partially disturbed	No further work
23SC819 Field Site 29	Prehistoric	5000	Red 60	Ridgetop setting Cultivated field Moderate artifact density	P-II Testing
23SC820 Field Site 30	Prehistoric	625	Red 80	Ridgeslope setting Cultivated field Low artifact density	P-II Testing
23SC821 Field Site 31	Prehistoric	5000	Red 0	Ridgetop setting Cultivated field	P-II Testing
23SC822 Field Site 33	Late Archaic Late Woodland	5000	Red 0	Ridgetop setting Cultivated field High artifact density	P-II Testing
23SC823 Field Site 34	Prehistoric	2500	Red 30	Ridgeslope setting Cultivated field Moderate artifact density	P-II Testing
23SC824 Field Site 35	Prehistoric	1250	Red 0	Ridgeslope setting Cultivated field Partially impacted Low artifact density	No further work
23SC826 Field Site 36	Prehistoric	100	Red 0	Floodplain setting Cultivated field Very low artifact density	No further work

APPENDIX C. PREVIOUSLY UNREPORTED PAGE AVENUE
 ARCHAEOLOGICAL SITES AND RECOMMENDATIONS
 JOB NO. J6U0803

<u>SITE NO./</u> <u>FIELD SITE NO.</u>	<u>AGE</u>	<u>SITE</u> <u>SIZE</u> <u>(m²)</u>	<u>ROUTE</u> <u>DISTANCE</u> <u>TO CL (m)</u>	<u>COMMENTS</u>	<u>RECOMMENDATIONS</u>
23SC827 Field Site 37	Prehistoric	10,000	Red 100	Ridgetop setting Cultivated field Moderate artifact density	P-II Testing
23SC828 Field Site 38	Prehistoric	25	Red	Ridgetop setting Cultivated field Very low artifact density	No further work
23SC829 Field Site 39	Prehistoric	375	Red 0	Ridgetop setting Cultivated field	P-II Testing
23SC830 Field Site 40	Prehistoric	1250	Red 0	Ridgetop setting Cultivated field Low artifact density	P-II Testing
23SC831 Field Site 41	Prehistoric	375	Red 100	Hillslope setting Cultivated field Very low artifact density	P-II Testing
23SC832 Field Site 42	Prehistoric	6200	Red 0	Hillslope setting Cultivated field Moderate artifact density	P-II Testing
23SC833 Field Site 43	Prehistoric	600	Red 0	Ridgetop setting Cultivated field	No further work
23SC834 Field Site 44	Prehistoric	625	Red 0	Hilltop setting Cultivated field	P-II Testing
23SC835 Field Site 45	Prehistoric	100	Red 0	Hilltop setting Cultivated and eroded field Very low artifact density	No further work
23SC836 Field Site 46	Historic	900	Red 0	Hilltop setting Cultivated field Moderate artifact density	Possible P-II Testing Archival research

APPENDIX C. PREVIOUSLY UNREPORTED PAGE AVENUE
 ARCHAEOLOGICAL SITES AND RECOMMENDATIONS
 JOB NO. J6U0803

<u>SITE NO./</u> <u>FIELD SITE NO.</u>	<u>AGE</u>	<u>SITE</u> <u>SIZE</u> <u>(m²)</u>	<u>ROUTE/</u> <u>DISTANCE</u> <u>TO CL (m)</u>	<u>COMMENTS</u>	<u>RECOMMENDATIONS</u>
23SC837 Field Site 47	Historic	2500	Red 0	Hilltop setting Cultivated field Moderate artifact density	Possible P-II Testing Archival research
23SC838 Field Site 48	Prehistoric	50	Red 20	Hillslope setting Cultivated field Very low artifact density	No further work
23SC839 Field Site 49	Prehistoric	625	Red 0	Hillslope setting Cultivated field Low artifact density	No further work
23SC840 Field Site 50	Woodland	1875	Red 20	Hilltop setting Cultivated field Partially disturbed High artifact density	P-II Testing
23SC841 Field Site 51	Prehistoric	625	Red 30	Hillslope setting Cultivated and eroded field Low artifact density	No further work
23SC842 Field Site 52	Prehistoric	100	Red 50	Hilltop setting Cultivated field Very low artifact density	No further work
23SC843 Field Site 53	Prehistoric	2500	Red 40	Ridgeslope setting Cultivated field Low artifact density	P-II Testing
23SC844 Field Site 55	Prehistoric	900	Green Dashed 100	Ridgetop setting Cultivated field Moderate artifact density	P-II Testing
23SC845 Field Site 56	Prehistoric	50	Red 50	Hilltop setting Cultivated field Very low artifact density	No further work

APPENDIX C. PREVIOUSLY UNREPORTED PAGE AVENUE
 ARCHAEOLOGICAL SITES AND RECOMMENDATIONS
 JOB NO. J6U0803

<u>SITE NO./ FIELD SITE NO.</u>	<u>AGE</u>	<u>SITE SIZE (m²)</u>	<u>ROUTE DISTANCE TO CL (m)</u>	<u>COMMENTS</u>	<u>RECOMMENDATIONS</u>
23SC846 Field Site 57	Historic	2500	Red 50	Hilltop setting Cultivated field Moderate artifact density	Possible P-II Testing Archival research
23SC847 Field Site 58	Prehistoric	450	Red 0	Ridgetop setting Cultivated and eroded field	No further work
23SC848 Field Site 59	Prehistoric	100	Green 270	Ridgetop setting Cultivated field Will not be impacted	No further work
23SC849 Field Site 60	Late Archaic	2500	Green 260	Ridgetop setting Cultivated field Will not be impacted	No further work
23SC850 Field Site 61	Prehistoric	1800	Green 70	Ridgetop setting Cultivated field	P-II Testing
23SC851 Field Site 62	Prehistoric	1200	Green 0	Ridgetop setting Cultivated field	P-II Testing
23SC852 Field Site 63	Prehistoric	875	Green 50	Ridgetop setting Cultivated field Moderate artifact density	P-II Testing
23SC853 Field Site 64	Prehistoric	100	Green 150	Ridgetop setting Cultivated field Low artifact density	P-II Testing
23SC854 Field Site 65	Prehistoric	400	Green 180	Ridgetop setting Cultivated field Will not be impacted	No further work
23SC855 Field Site 66	Woodland	700	Red 0	Ridgetop setting Cultivated field Low artifact density	P-II Testing
23SC856 Field Site 67	Prehistoric	3500	Green Dashed 0	Ridgetop setting Cultivated field Moderate artifact density	P-II Testing

-- APPENDIX C. PREVIOUSLY UNREPORTED PAGE AVENUE
ARCHAEOLOGICAL SITES AND RECOMMENDATIONS
JOB NO. J6U0803

<u>SITE NO./ FIELD SITE NO.</u>	<u>AGE</u>	<u>SITE SIZE (m²)</u>	<u>ROUTE/ DISTANCE TO CL (m)</u>	<u>COMMENTS</u>	<u>RECOMMENDATIONS</u>
23SC857 Field Site 68	Late Archaic	900	Green Dashed 0	Ridgetop setting Cultivated field	P-II Testing
23SC858 Field Site 69	Prehistoric	5000	Green Dashed 0	Ridgetop setting Cultivated field Moderate artifact density	P-II Testing
23SC859 Field Site 70	Prehistoric	2000	Green Dashed 120	Ridgetop setting Cultivated field	P-II Testing
23SC860 Field Site 71	Prehistoric	5500	Green Dashed 60	Ridgetop setting Cultivated field Moderate artifact density	P-II Testing
23SC861 Field Site 72	Prehistoric	15,000	Green Dashed 120	Ridgetop setting Cultivated field Moderate artifact density	P-II Testing
23SC862 Field Site 73	Prehistoric	500	Green Dashed 180	Ridgetop setting Cultivated field	P-II Testing
23SC863 Field Site 74	Prehistoric	5000	Green Dashed 20	Slope setting Cultivated field	P-II Testing
23SC864 Field Site 75	Late Woodland	7500	Green 80	Ridgetop setting Cultivated field	P-II Testing
23SC865 Field Site 76	Prehistoric	625	Green 60	Ridgetop setting Cultivated field Very low artifact density	No further work
23SC866 Field Site 77	Prehistoric	300	Green, Green Dashed 150	Ridgetop setting Cultivated field Very low artifact density	No further work

APPENDIX C. PREVIOUSLY UNREPORTED PAGE AVENUE
 ARCHAEOLOGICAL SITES AND RECOMMENDATIONS
 JOB NO. J6U0803

<u>SITE NO./ FIELD SITE NO.</u>	<u>AGE</u>	<u>SITE SIZE (m²)</u>	<u>ROUTE/ DISTANCE TO CL (m)</u>	<u>COMMENTS</u>	<u>RECOMMENDATIONS</u>
23SC867 Field Site 78	Prehistoric	5000	Green Dashed 60	Slope setting Cultivated field Moderate-High artifact density	P-II Testing
23SC880 Field Site 79	Prehistoric	700	Green	Hilltop setting Cultivated field	P-II Testing
23SC881 Field Site 80	Prehistoric	5000	Green	Hillslope setting Cultivated field Low artifact density May continue into woods	P-II Testing
23SC882 Field Site 81	Prehistoric	2500	Green	Hillslope setting Cultivated field Low artifact density May continue to hilltop	P-II Testing
23SC883 Field Site 82	Prehistoric	2000	Green	Terrace setting Cultivated field Low artifact density	P-II Testing

APPENDIX D. PAGE AVENUE HISTORIC STRUCTURES
JOB NO. J6U0803

<u>NAME AND/OR ADDRESS</u>	<u>APPROXIMATE AGE</u>	<u>NATURE OF STRUCTURE</u>	<u>ROUTE/ DISTANCE* CENTERLINE (M)</u>	<u>COMMENTS</u>
Anteman Property Post Road (St. Charles County)	Late 19th/ Early 20th Century	Farmhouse with outbuildings	Red 25	Not NRHP-eligible To be destroyed
Moore Barn River Valley Road (St. Louis County)	1945	Isolated wood or timber frame barn	Red 5	Not NRHP-eligible To be destroyed
Dr. Capt. John Campbell House (St. Charles County)	Early 19th Century	Farmhouse with outbuildings	Red 60	House determined NRHP-eligible Outbuildings not NRHP eligible Only outbuildings will be impacted
Wemsath Property Wemsath Road (St. Charles County)	ca. 1870	Farmhouse with outbuildings	Red 15	NRHP-eligible Not impacted
Brinkman Residence Route 94 (St. Charles County)	Late 19th Century	Farmhouse with outbuildings	Red 0	Not NRHP-eligible To be destroyed
Robert Kaplan Trust (St. Charles County)	Late 19th Century	Farmhouse with outbuildings	Red 0	Potentially NRHP- eligible To be destroyed
McElhinney-Knowles Estate (St. Charles County)	1838	Farmhouse with outbuildings	Red 25	NRHP-eligible Not impacted
Wolkemeyer Property (St. Charles County)	1936	Farmhouse with outbuildings	Red 20	NRHP-eligible Not impacted
Mary Dickherber Property (St. Charles County)	1904	Farmhouse with outbuildings	Red 0	NRHP-eligible Not impacted
Dingledine Property 34 Dingledine Road (St. Charles County)	Mid 19th Century	Farmhouse with outbuildings	Green Dashed	NRHP-eligible Not impacted

APPENDIX D. PAGE AVENUE HISTORIC STRUCTURES
JOB NO. J6U0803

<u>NAME AND/OR ADDRESS</u>	<u>APPROXIMATE AGE</u>	<u>NATURE OF STRUCTURE</u>	<u>ROUTE/ DISTANCE* CENTERLINE (m)</u>	<u>COMMENTS</u>
Little Lake Golf Course Site 23SL737 (St. Louis County)	Late 19th/ Early 20th Century	Recreational facility	Green 100	Potentially NRHP- eligible To be destroyed
Gronefeld Farm 2355 Upper Bottom Road (St. Charles County)	1936	Farmhouse with outbuildings	Red 15	NRHP-eligible Not impacted
Ostman Property Towers Road (Charles County)	1905	Farmhouse with outbuildings	Green dashed 130	Not NRHP-eligible Probably not impacted
Hadley Property 1501 St. Peters (Cottleville Road) (St. Charles County)	Late 19th/ Early 20th Century	Farmhouse with outbuildings	Green 0	Not NRHP-eligible To be destroyed
Unknown 1551 St. Peters (Cottleville Road) (St. Charles County)	Late 19th Century	Farmhouse with outbuildings	Green 180	Not NRHP-eligible Probably not impacted
Ohmes Residence 325 Ohmes Road (St. Charles County) (previously recorded site 23SC537)	Late 19th Century	Farmhouse with outbuildings	Green 250	Only barn NRHP- eligible House is ca. 125 yrs old Barn is ca. 150 yrs old Not impacted
Kolkmeier Residence 806 Caulks Hill Road (St. Charles County)	ca. 1850	Farmhouse with outbuildings	Green 0	Not NRHP-eligible To be destroyed
Tappmeyer Barn Creve Coeur Mill Road (St. Louis County)	Early 20th Century	Barn	Red 100	Not NRHP-eligible To be destroyed
Schmittel Residence River Valley Road (St. Louis County)	Mid-20th Century	Farmhouse with outbuildings	Red mitigation	Not NRHP-eligible To be destroyed
Dennis and Teresa Dickherber Property (St. Charles County)	1955	farmhouse with outbuildings	Red 150	Not NRHP-eligible To be destroyed



DEPARTMENT OF THE ARMY
ST. LOUIS DISTRICT, CORPS OF ENGINEERS
1222 SPRUCE STREET
ST. LOUIS, MISSOURI 63103-2833

REPLY TO
ATTENTION OF:

November 2, 2006

Regulatory Branch
File Number: 1999-4810 (Previously 93-00264)

Mr. Robert W. Meade
Senior Wetland Specialist
Missouri Department of Transportation
Post Office Box 270
Jefferson City, Missouri 65102

Dear Mr. Meade:

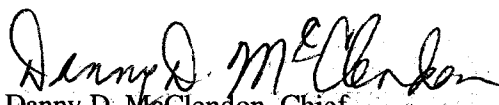
We have reviewed your request, dated January 3, 2006, and follow-up information, dated August 4, 2006, for a 5-year extension of time for the completion of work authorized under Department of the Army Permit 93-00264. Permit 93-00264 was issued to the Missouri Department of Transportation on July 26, 1995, for the placement of fill material into Waters of the United States in conjunction with the construction of the project known as "Page Avenue Extension". The original permit was issued by the Kansas City District Corps of Engineers, and the file transferred to the St. Louis District as part of a District Boundary change in 1995. In conjunction with the transfer of the file, the new file number is 1999-4810.

Based upon our review, the Corps concurs with your request, and the permit is hereby modified for an extension of time to December 31, 2011, for completion of the project. All other terms and conditions of the permit, and subsequent modifications, including conditions of the water quality certification, remain in full force and effect. If the work authorized is not completed on or before the permit expiration date, the authorization, if not previously revoked or specifically further extended, shall cease and become null and void. Please be aware that Department of the Army Individual Permits are generally extended for a maximum validity of 10-years. As such, any additional time extensions for this project may require a new permit review procedure.

If any material changes in the scope, location or plans of the work are found necessary, due to unforeseen conditions or otherwise, revised plans detailing proposed modifications in the work must first be submitted to the Regulatory Branch, St. Louis District for review and approval prior to initiation of any project activities. Proposed modifications may not be initiated until Department of the Army "Approval of Revised Plans" has been granted.

If you have any questions or comments related to this action you may contact Ward Lenz at (314) 331-8186.

Sincerely,


Danny D. McClendon, Chief
Regulatory Branch

Mr. Refaat Mefrakis
MDNR Water Protection Program
P.O. Box 176
Jefferson City, Missouri, 65102-0176

STATE OF MISSOURI
DEPARTMENT OF NATURAL RESOURCES

Mel Carnahan, Governor • David A. Shorr, Director

DIVISION OF ENVIRONMENTAL QUALITY
P.O. Box 176 Jefferson City, MO 65102-0176

June 27, 1995

Mr. Joe Mickes
Chief Engineer
Missouri Highway & Transportation Department
P.O. Box 270
Jefferson City, MO 65102

St. Louis &
St. Charles County
PN93-00264

Dear Mr. Mickes:

The Department of Natural Resources, Water Pollution Control Program, has reviewed the request for Water Quality Certification for the proposal to construct a freeway, a Missouri River bridge crossing and other crossings. The facility will proceed from the terminus of Page Avenue at Bennington Place in St. Louis County to Route 40/61 in St. Charles County over a distance of approximately 20.5 miles. The project right of way will directly affect over 20 acres of wetlands at greater than 20 wetlands sites. The project crosses the Missouri River, Crooked Creek, Dardenne Creek, Creve Coeur Creek and Lake, several unnamed tributaries to these and adjacent wetlands. The final project is further described in documents transmitted to the U.S. Fish and Wildlife Service by letter dated June 15, 1995. The project is located in St. Louis and St. Charles Counties, Missouri, and crosses the Missouri River at approximately river mile 33.0.

This office certifies that the proposed activity apparently will not cause the general or numeric criteria to be exceeded nor impair beneficial uses established in Water Quality Standards, 10 CSR 20-7.031, provided the following conditions are met:

1. There must be a ratio of at least one acre mitigation for each acre of wetlands impacted or destroyed by this project. Mitigation plans shall be approved prior to construction. The actual area to be mitigated shall be based on the delineated wetlands as identified by the U.S. Army Corps of Engineers in the Section 404 permit, should it be issued. The applicant shall furnish a survey of the area to be used as mitigation for wetlands loss. The survey shall be used to describe and identify the area to be reserved as the mitigation/avoidance corridor by a permanent conservation restriction. The conservation restriction covering this tract shall reserve this area for wetlands protection and wildlife purposes exclusively.
2. Best management practices must be utilized during the construction phase to minimize the amount of erosion into the rivers.

3. All temporary materials shall be removed upon completion of the project and the river bed and banks replaced and stabilized to their original contours.
4. Only clean non-polluted material shall be used.
5. To the extent possible, construction shall take place during periods of low flow in order to avoid scouring prior to placement of erosion control measures.
6. Care must be taken to keep machinery out of the waterway as much as possible. Excessive crossing will cause increased erosion and turbidity.
7. Any land disturbance activities may require a water pollution control permit. As this project would proceed over a long time frame, and water pollution control permits are limited to a five year duration by statute, we recommend that you consult the Department of Natural Resources, Water Pollution Control Program at (314) 526-2929 to maintain current permits as needed throughout the project period.

Water Quality Standards must be met during the operation. If compliance with Water Quality Standards is not maintained, the Corps of Engineers will be notified and the certification may be withdrawn.

This certification is being issued under Section 401 of Public Law 95-217, The Clean Water Act of 1977. If you have any questions, please contact John Madras of the Planning Section at (314) 751-7428.

Sincerely,

WATER POLLUTION CONTROL PROGRAM



Edwin D. Knight
Director

EDK:tep

c: ✓ M.D. Jewett, Kansas City District, Corps of Engineers
Department of Natural Resources, St. Louis Regional Office

JUN 29 11 32 AM '95
MISSOURI DEPARTMENT OF NATURAL RESOURCES
ST. LOUIS REGIONAL OFFICE