



BOOTHEEL BRIDGE BUNDLE

Project Director: Benji Philpot, P.E.

Team Member: Kaitlyn Bower

Team Member: R. David Johnson, EIT

Industry Meeting January 13, 2020

OUTLINE

Project Overview

Primary Bridges

Alternative Bridges

Anticipated Expertise

Third Parties

Budget

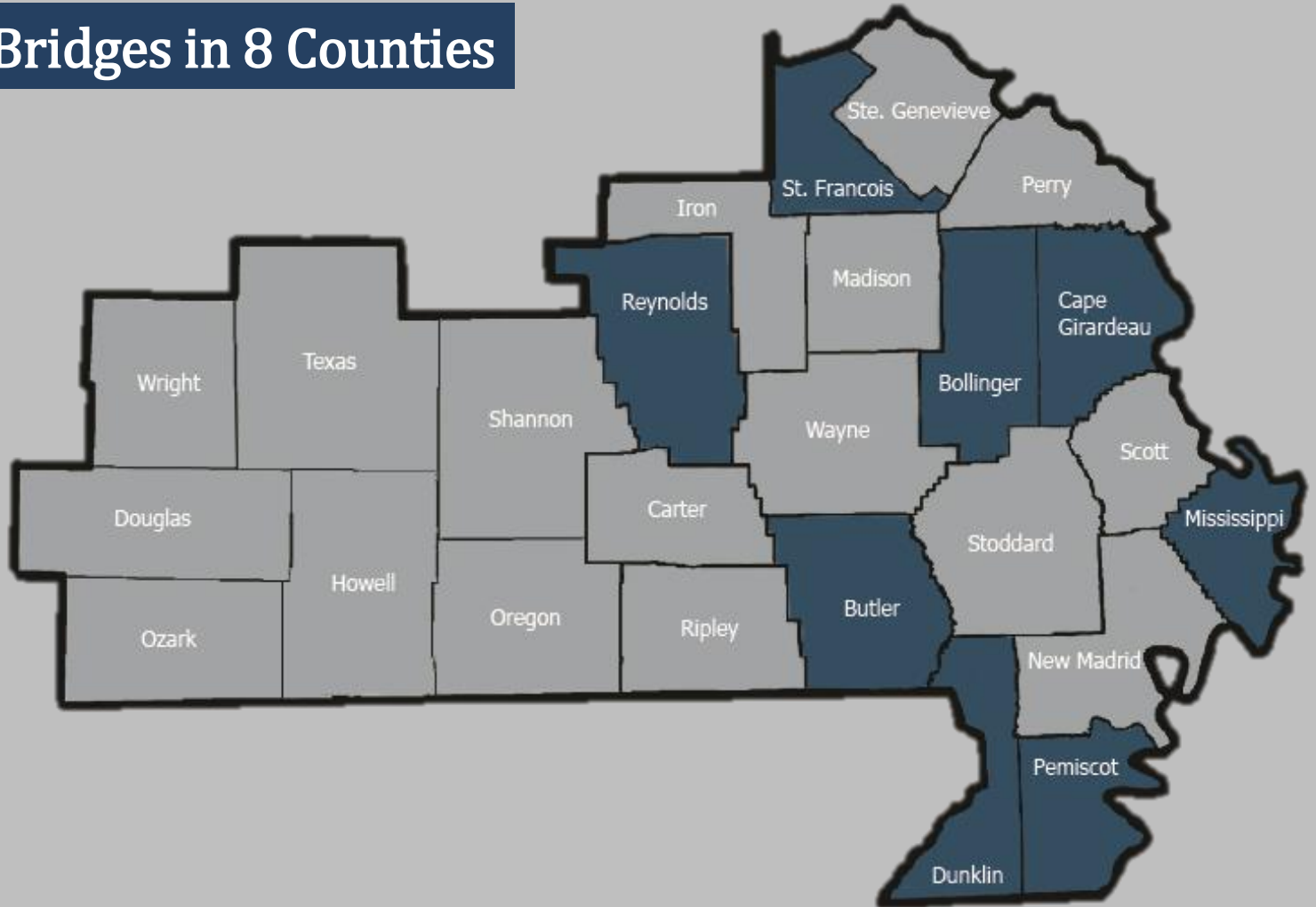
Schedule

Project Goals

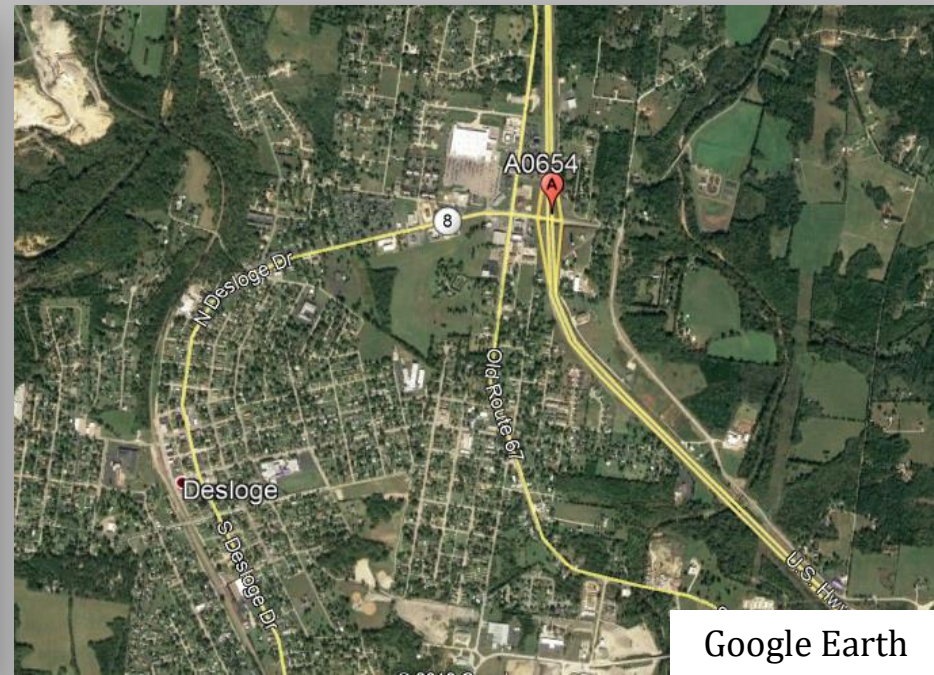


Project Overview

15 Primary Bridges in 8 Counties



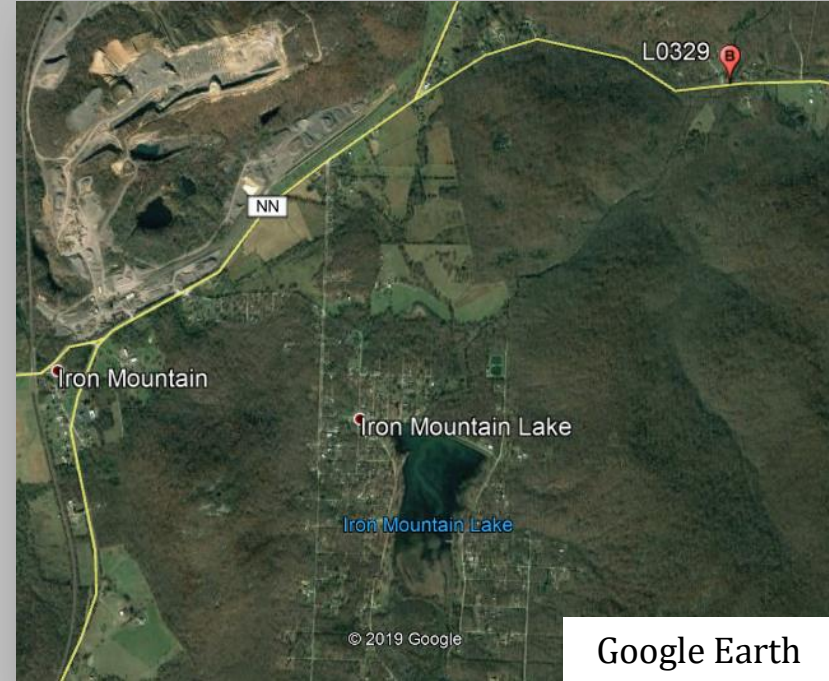
Bridge No. A0654 – US 67(SB)



- Built: 1959
- Crossing Feature: MO 8
- NBI Deck – 4
- NBI Superstructure – 4
- NBI Substructure – 6
- Will Consider Rehab
- US 67(SB) ADT: 12,909
- Bridge Length: 139'0"
- Curb to Curb: 28'0"
- Approach: 38'0"



Bridge No. L0329 – Rt. NN

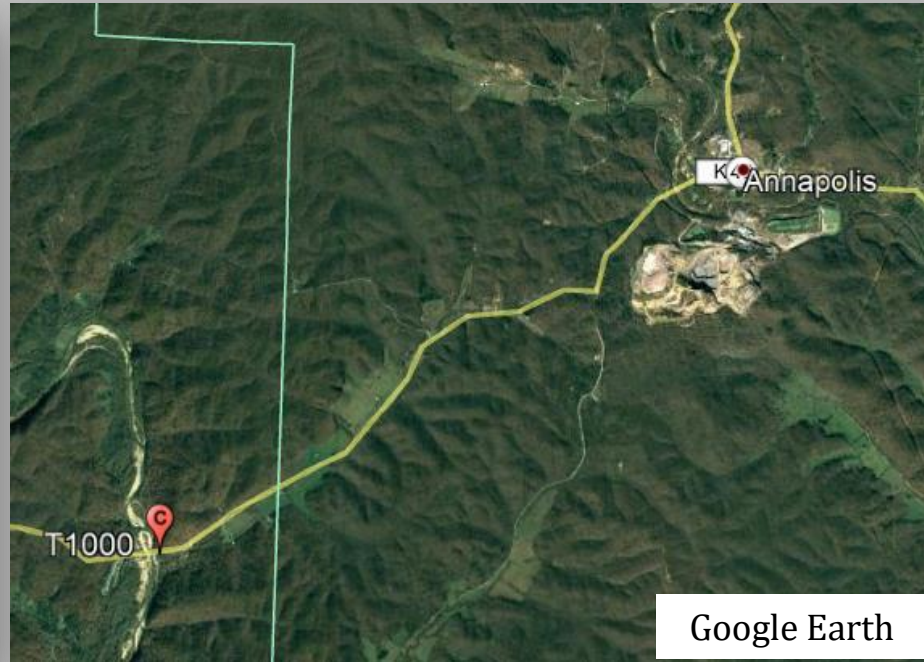


- Built: 1948
- Crossing Feature: Indian Creek
- NBI Deck – 4
- NBI Superstructure – 4
- NBI Substructure – 5

- Will Consider Rehab
- Rt. NN ADT: 1,749
- Bridge Length: 113'0"
- Curb to Curb: 22'0"
- Approach: 22'0"



Bridge No. T1000 – Rt. K

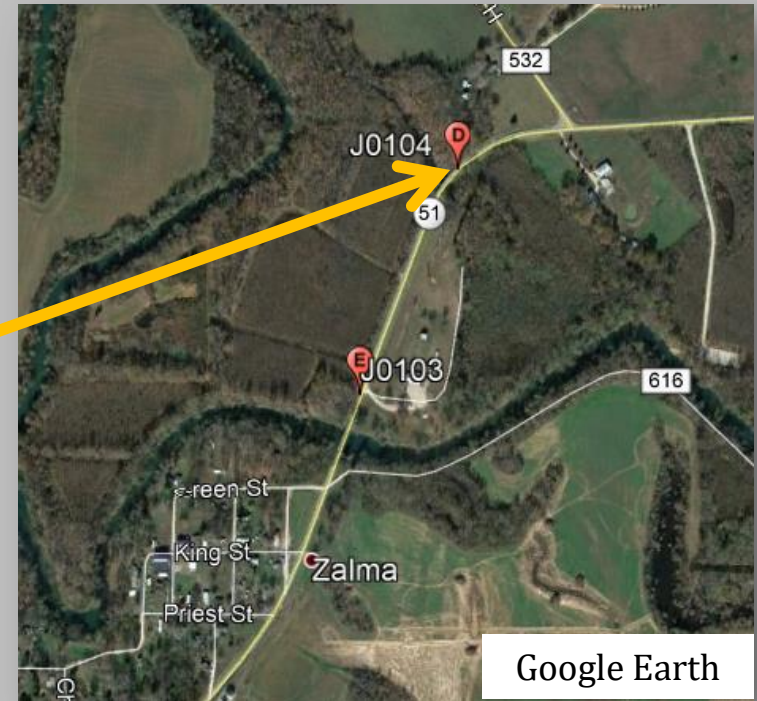


- Built: 1959
- Crossing Feature: Black River
- NBI Deck – 4
- NBI Superstructure – 7
- NBI Substructure – 7

- Will Consider Rehab
- Rt. K ADT: 298
- Bridge Length: 600'0"
- Curb to Curb: 20'0"
- Approach: 20'0"



Bridge No. J0104 - MO 51

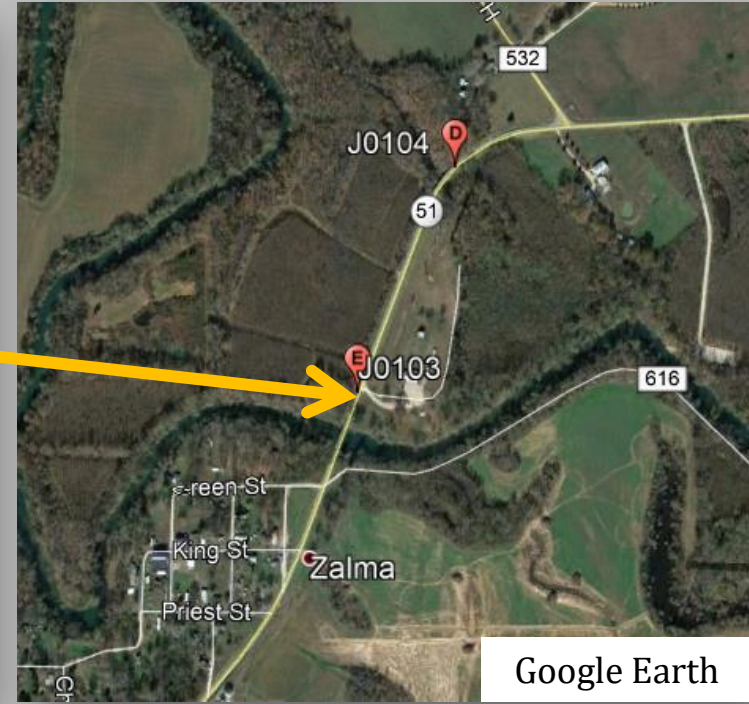


- Built/Rehab: 1929/1974
- Crossing Feature: Castor River Overflow
- NBI Deck – 5
- NBI Superstructure – 5
- NBI Substructure – 6

- Replacement Required
- MO 51 ADT: 660
- Bridge Length: 170'0"
- Curb to Curb: 20'0"
- Approach: 20'0"



Bridge No. J0103 - MO 51



- Built: 1929
- Crossing Feature: Castor River
- NBI Deck – 6
- NBI Superstructure – 5
- NBI Substructure – 5

- Replacement Required
- MO 51 ADT: 660
- Bridge Length: 399'0"
- Curb to Curb: 20'0"
- Approach: 20'0"



Bridge No. L0567 - Rt. A



- Built: 1954
- Crossing Feature: Whitewater River
- NBI Deck – 4
- NBI Superstructure – 6
- NBI Substructure – 6

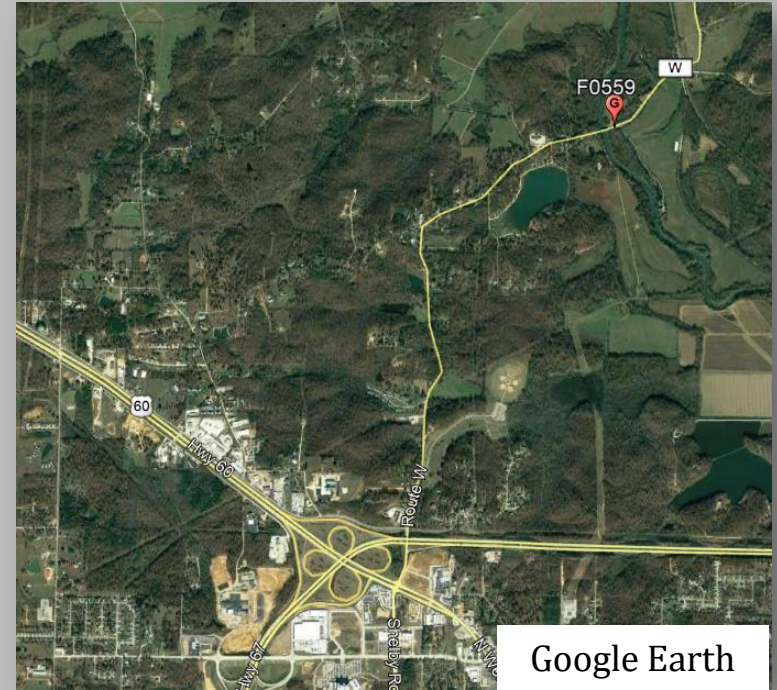
- Replacement Required
- RT. A ADT: 644
- Bridge Length: 221'0"
- Curb to Curb: 22'0"
- Approach: 22'0"



Bridge No. F0559 - Rt. W



F0059 Butler Co. 10/24/18
Rt W South/ Black River
Top view of deck looking East w/ many spalls and delam
Wearing Surface missing in many areas



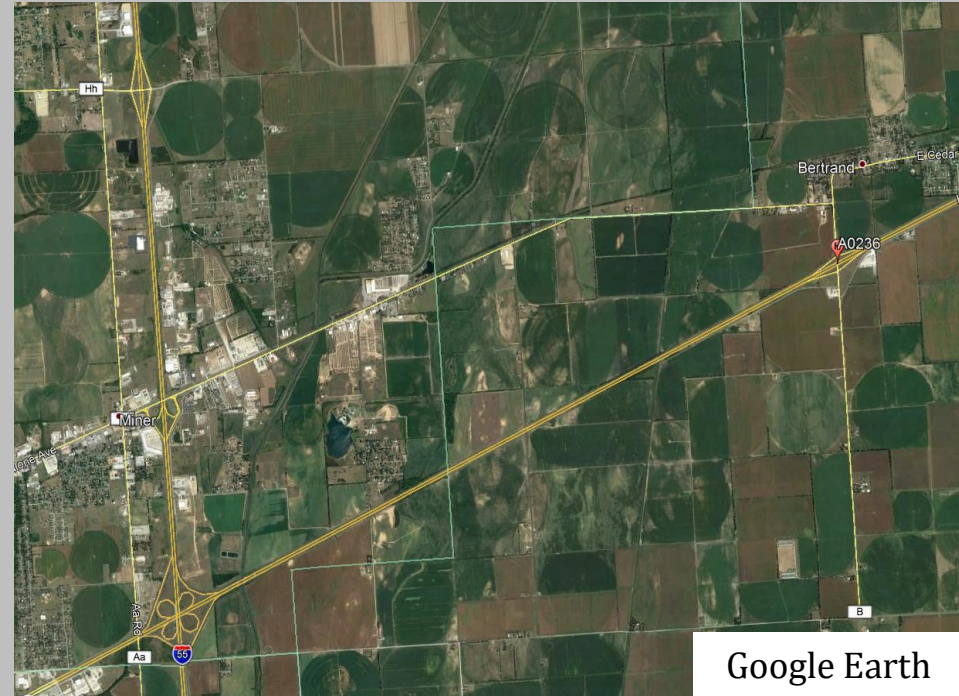
Google Earth

- Built: 1964
- Crossing Feature: Black River
- NBI Deck – 3
- NBI Superstructure – 5
- NBI Substructure – 4

- Replacement Required
- RT. W ADT: 1,561
- Bridge Length: 416'0"
- Curb to Curb: 24'0"
- Approach: 24'0"



Bridge No. A0236 - Rt. B

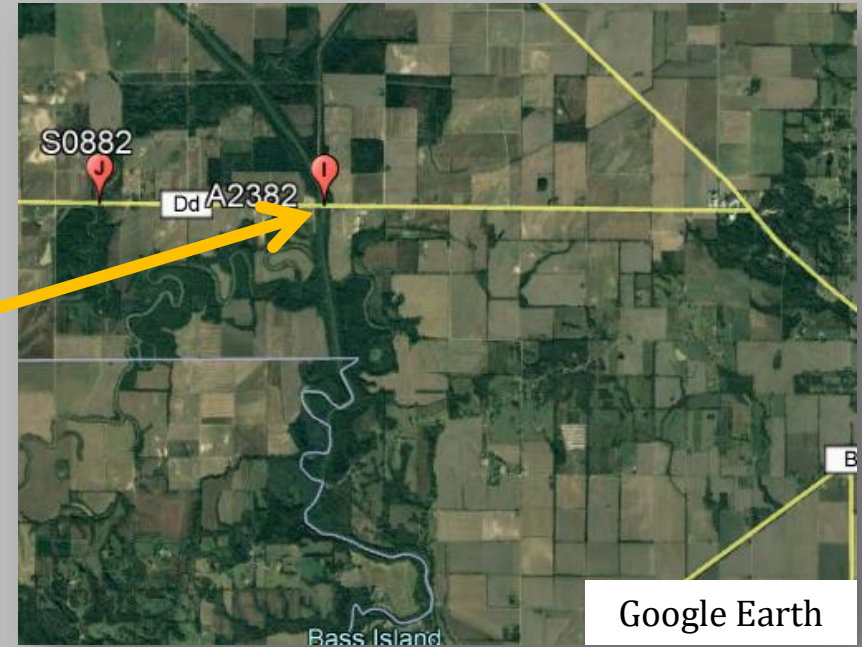


- Built: 1959
- Crossing Feature: I-57
- NBI Deck – 4
- NBI Superstructure – 4
- NBI Substructure – 7

- Will Consider Rehab
- RT. B ADT: 1,946
- Bridge Length: 248'0"
- Curb to Curb: 28'0"
- Approach: Approx. 40'0"



Bridge No. A2382 - Rt. DD

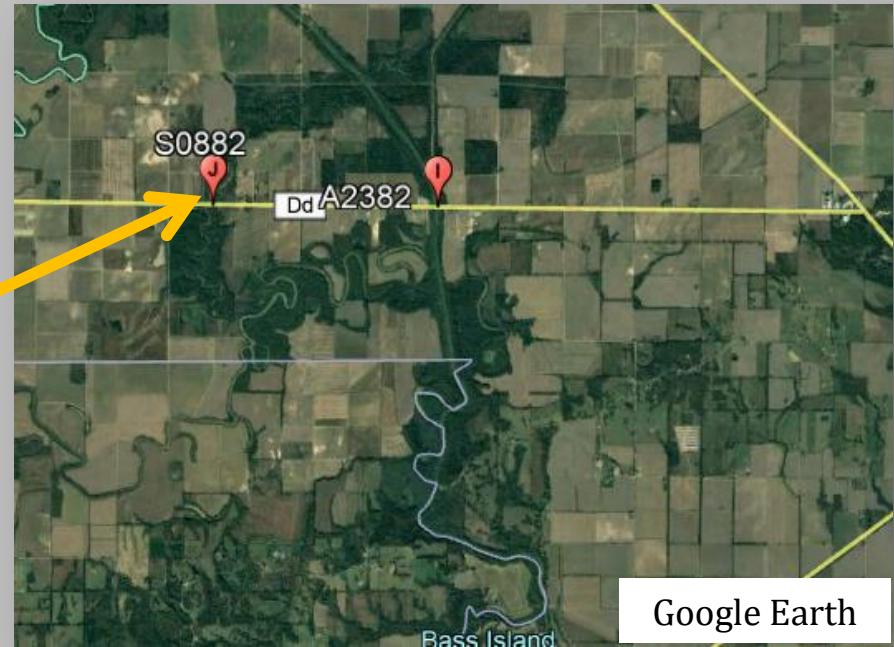


- Built: 1968
- Crossing Feature: St. Francis River
- NBI Deck – 3
- NBI Superstructure – 6
- NBI Substructure – 6
- Will Consider Rehab
- RT. DD ADT: 430
- Bridge Length: 328'0"
- Curb to Curb: 26'0"
- Approach: 20'0"



Bridge No. S0882 - Rt. DD

S0882 Dunklin Rte. DD
Bent #2 - Girder End Repairs



- Built: 1933
- Crossing Feature: St. Francis River Slough
- NBI Deck – 6
- NBI Superstructure – 4
- NBI Substructure – 5

- Replacement Required
- RT. DD ADT: 430
- Bridge Length: 96'0"
- Curb to Curb: 20'0"
- Approach: 20'0"



Bridge No. P0473 - Rt. EE



- Built: 1953
- Crossing Feature: LRDD #1
- NBI Deck – 3
- NBI Superstructure – 6
- NBI Substructure – 5

- Replacement Required
- RT. EE ADT: 448
- Bridge Length: 241'0"
- Curb to Curb: 20'0"
- Approach: 20'0"



BOOTHEEL BRIDGE BUNDLE

Pemiscot County

Bridge No. P0474 - Rt. EE

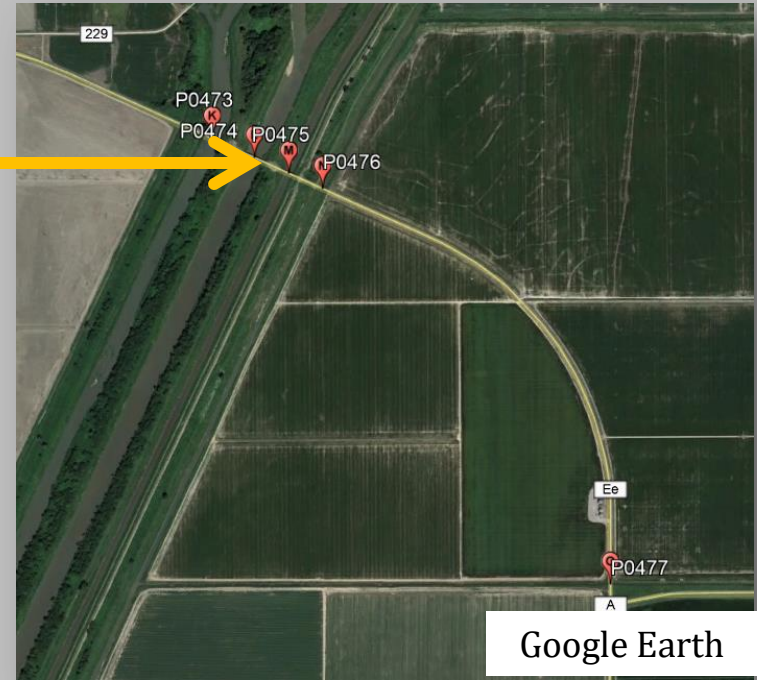


- Built: 1953
- Crossing Feature: LRDD #251
- NBI Deck – 4
- NBI Superstructure – 6
- NBI Substructure – 5

- Replacement Required
- RT. EE ADT: 448
- Bridge Length: 263'0"
- Curb to Curb: 20'0"
- Approach: 20'0"



Bridge No. P0475 - Rt. EE



- Built: 1953
- Crossing Feature: LRDD #258
- NBI Deck – 5
- NBI Superstructure – 6
- NBI Substructure – 5

- Replacement Required
- RT. EE ADT: 448
- Bridge Length: 185'0"
- Curb to Curb: 20'0"
- Approach: 20'0"



Bridge No. P0476 - Rt. EE



- Built: 1953
- Crossing Feature: LRDD #259
- NBI Deck – 5
- NBI Superstructure – 5
- NBI Substructure – 5

- Replacement Required
- RT. EE ADT: 448
- Bridge Length: 95'0"
- Curb to Curb: 20'0"
- Approach: 20'0"



Bridge No. P0477 - Rt. EE



- Built: 1953
- Crossing Feature: LRDD #65
- NBI Deck – 6
- NBI Superstructure – 5
- NBI Substructure – 5

- Replacement Required
- RT. EE ADT: 448
- Bridge Length: 47'0"
- Curb to Curb: 20'0"
- Approach: 20'0"



Alternative Bridges

- 10 Alternative Bridges
- Best Practices in the Design and Construction of the 15 Primary Bridges may increase the number of locations that are addressed.
- Teams may include Alternative Bridges in their Proposal

<u>BRIDGE</u>	<u>ROUTE</u>	<u>COUNTY</u>	<u>FEATURE CROSSING</u>	<u>AADT</u>	<u>BUILT</u>
T0037	MO 153	NEW MADRID	LRDD #44	477	1933
N0987	RTE ZZ	BOLLINGER	LITTLE CROOKED CREEK	413	1961
N0198	RTE Y	CAPE GIRARDEAU	LITTLE INDIAN CREEK	453	1956
P0734	RTE D	CAPE GIRARDEAU	BYRD CREEK	396	1954
S0971	RTE Z	SCOTT	LRDD #1	617	1935
R0185	RTE P	STODDARD	LRDD #35	60	1962
G0277	RTE B	BUTLER	DD #1	1707	1940
A2470	RTE U	BUTLER	ST. FRANCIS RIVER	405	1970
L0224	RTE D	NEW MADRID	LRDD #1	631	1949
S0676	MO 153	NEW MADRID	DD #8	477	1933

Alternative Bridges in the shaded cells above must be replaced if selected for inclusion in the Bootheel Bridge Bundle. Bridges in white have rehabilitation options.



Anticipated Expertise

Expertise in the following areas is anticipated.

- Structural Engineering
- Hydraulic Engineering
- Geotechnical Engineering
- Bridge Construction

Little River Drainage District

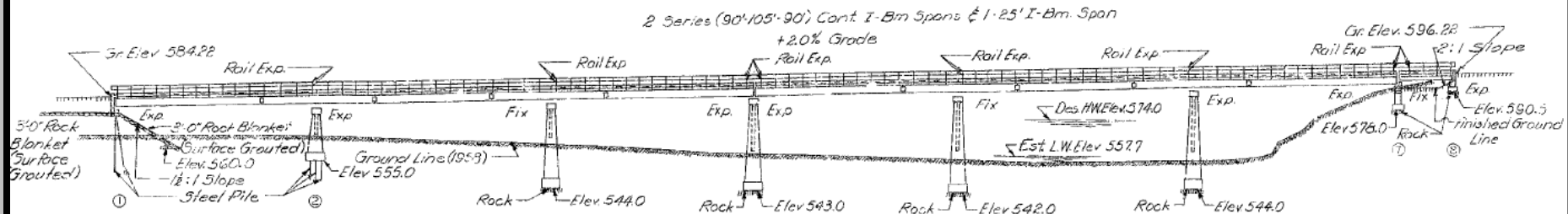


Image Source: Missouri Digital Heritage

<http://mdh.contentdm.oclc.org/cdm/search/collection/msalrdd>

As-Built Plans are available. Please contact sebridges@modot.mo.gov if you need help accessing these files.

MISSOURI STATE HIGHWAY DEPARTMENT



Little River Drainage District (LRDD)

“Southeast Missouri's “Bootheel” is a natural basin for Mississippi River flooding. It covers 540,000 acres and drains a total of 1.2 million acres.”

Source: *Missouri Digital Heritage*

https://www.sos.mo.gov/archives/mdh_splash/default.asp?coll=lilrivdd

LRDD and MoDOT have a history of positive partnership. This partnership will continue in the Bootheel Bridge Bundle Design-Build Project.



5 Primary Bridges span LRDD via easement (P0473 – P0477)
3 Alternative Bridges span LRDD via easement (T0037, R0185, L0224)

Google Earth

Reducing Risk

- The MoDOT Team will continue to work towards reducing risk in the following areas:
 - Utilities
 - Right of way
 - Environmental
 - Geotechnical
 - Third party agreements



Anticipated Budget

- Total Program: \$25.2 million
 - PE/CE Internal
 - Utilities
 - R/W and Incidentals
 - Stipends
- Design-Build Contract: \$21.5 million



Anticipated Schedule

Release Request for Qualifications	January 13, 2020
Statement of Qualifications Due	February 11, 2020
Release Request for Proposals	March, 2020
Technical Discussions	March – May, 2020
Final Technical Proposals & Price Allocation Due	May, 2020
MHTC Award	July, 2020
NTP 1	August, 2020



DBE & Workforce Goals

- A DBE goal has been established for the Bootheel Bridge Bundle:
 - 8% Construction – 12% Professional Services
- A Workforce Goal has been established for the Bootheel Bridge Bundle:
 - 11.4% in all counties except Dunklin and Pemiscot (26.5%)
 - One (1) OJT slot at 1,000 hours for construction



Project Goals

1. Deliver the project within the program budget of \$25.2 million on or before December 31, 2023.
2. Use innovation to maximize the number of locations to be addressed while providing quality structures sensitive to location and traffic.
3. Minimize public inconvenience through increased construction speed and flexibility in scheduling.
4. Improve safety at each location.

